

DENTAL TRIBUNE

The World's Dental Newspaper • Middle East & Africa Edition

PUBLISHED IN DUBAI

www.dental-tribune.me

March-April 2021 | No. 2, Vol. 11

ENDO TRIBUNE

Reducing microleakage with Er,Cr:YSGG and/or Nd:YAG lasers

►A1-4

LAB TRIBUNE

Dental technicians: The missing link

►B1-2

IMPLANT TRIBUNE

Full arch implant rehabilitation of the maxilla with the Straumann Pro Arch...

►C1-2

ORTHO TRIBUNE

Stars and social media influencers are turning clicks into clear aligner cases

►D1-4

HYGIENE TRIBUNE

Dental disaster: Dentists evaluate consequences of the COVID-19 pandemic

►E1-4

SEHA in cooperation with CAPP & BARD conducted GP Dentists upskilling programme in endodontics

By Dental Tribune MEA

The programme took place in Sheikh Shakhboub Medical City which is a new hub for innovation and artificial intelligence on 08-10 March 2021 and welcomed over 25 dental professionals.

The main faculty lead of the programme was Prof. James Prichard (BDS(ULond), MSc(ULond), LDSRCS (Eng), MFGDP(UK), FIADFE(USA), AFHEA(UK) F BARD (UK), MFDTEd) and also Assistant Professor Rashid El Abed and Dr Shaista Siddiqui. The

►Page 2



© SEHA

AD

#whdentalwerk
 f @ in ▶
 video.wh.com

Now at
 your dealer
 or wh.com



20
 YEARS
 IMPLANTMED

20 Years of Pioneering Spirit



Pioneering Spirit. Proven Experience.

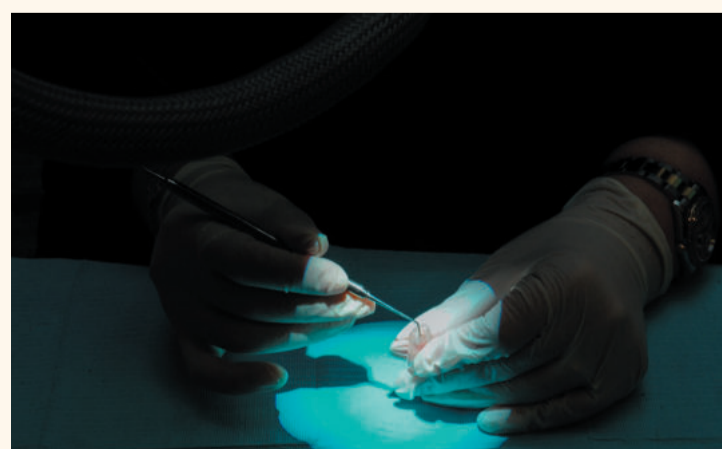
Implantmed developed in the last 20 years from newcomer to today's smart device bestseller in the field of dental implantology and oral surgery.

implantmed

◀Page 1

three-day workshop covered the latest in Diagnosis, Access and Prep, Endo Obturation and Direct Composites all of which are the best practices in modern advanced dentistry. The workshop was in alignment with the upskilling program by SEHA which aims at enhancing the GP dentists' clinical skills which will immediately result in improving patient care, experience, and satisfaction

"In dental practices, we have to take proactive steps in training and educating our teams so that we all grow along with the evolving dental industry and pick up on technology trends" said Ms Mariam Al Zaabi, the Group Education and Mobility Director. The workshop, which was led by SEHA's HR Education Department, covered the best dental practices and latest techniques in modern advanced dentistry.

**IMPRINT**

PUBLISHER AND CHIEF EXECUTIVE OFFICER
Torsten R. OEMUS

CHIEF CONTENT OFFICER
Claudia DUSCHEK

DENTAL TRIBUNE INTERNATIONAL
Holbeinstr. 29, 04229 Leipzig, Germany
Tel.: +49 341 48 474 302
Fax: +49 341 48 474 173
www.dental-tribune.com
General requests:
info@dental-tribune.com
Sales requests:
mediasales@dental-tribune.com

DENTAL TRIBUNE MEA**EDITION EDITORIAL BOARD**

Dr. Aisha SULTAN ALSUWAI, UAE
Prof. Paul TIPTON, UK
Prof. Khaled BALTO, KSA
Dr. Ninette BANDAY, UAE
Dr. Nabeel HUMOOD ALSABEEHA, UAE
Dr. Naif Almosa, KSA
Dr. Mohammad AL-OBAIDA, KSA
Dr. Meshari F. ALOTAIBI, KSA
Dr. Jasim M. AL-SAEEDI, Oman
Dr. Mohammed AL-DARWISH, Qatar
Dr. Dobrina MOLLOVA, UAE
Dr. Ahmed KAZI, UAE
Dr. Munir SILWADI, UAE
Dr. Khaled ABOUSEADA, KSA
Dr. Rabih ABI NADER, UAE
Dr. Ehab RASHED, UAE
Dr. Mohd Dashti, Kuwait
Aiham FARRAH, CDT, UAE
Retty M. MATTHEW, UAE

PARTNERS

Saudi Dental Society
Saudi Ortho Society
Lebanese Dental Association
Lebanese Orthodontic Society
Qatar Dental Society
Oman Dental Society
Kuwait Dental Association
International Federation of Dental Hygienist
British Academy of Restorative Dentistry
British Academy of Dental Implantology
AALZ - Aachen Dental Laser Center
Singapore Dental Association
Saudi Dental Hygienist Society

DIRECTOR OF mCME

Dr. Dobrina MOLLOVA
mollova@dental-tribune.me
Tel.: +971 50 42 43072

DIRECTOR

Tzvetan DEYANOV
deyanov@dental-tribune.me
Tel.: +971 55 11 28 581

EDITING & DESIGN

Kinga MOLLOV
k.romik@dental-tribune.me
Tel.: +971 56 23 70 721

PRINTING HOUSE & DISTRIBUTION

Al Nisr Printing
P. O. Box 6519, Dubai, UAE
800 4585/04-4067170

Material from Dental Tribune International GmbH that has been reprinted or translated and reprinted in this issue is copyrighted by Dental Tribune International GmbH. Such material must be published with the permission of Dental Tribune International GmbH. Dental Tribune is a trademark of Dental Tribune International GmbH.

All rights reserved. © 2021 Dental Tribune International GmbH. Reproduction in any manner in any language, in whole or in part, without the prior written permission of Dental Tribune International GmbH is expressly prohibited.

Dental Tribune International GmbH makes every effort to report clinical information and manufacturers' product news accurately but cannot assume responsibility for the validity of product claims or for typographical errors. The publisher also does not assume responsibility for product names, claims or statements made by advertisers. Opinions expressed by authors are their own and may not reflect those of Dental Tribune International GmbH.

CHALLENGE ACCEPTED.

Nobody thought a bulk fill flowable was possible. Until we invented Surefil® SDR flow+ Material. Today, we **redefine restorative materials again with Surefil one™ Restorative**, transforming how dentists manage challenging clinical situations where isolation is difficult or when patient compliance is an issue.

- **Self-adhesive**—no separate adhesive step needed
- **Unlimited depth of cure**—no layering of composite materials, making it faster than a traditional composite restoration, **especially in compromised cases.**

Surefil one™ Restorative. Progress where you need it most.
For more information visit [DentsplySirona.com](https://www.DentsplySirona.com)

Surefil one™
Self-Adhesive Composite Hybrid

Full mouth periodontal treatment using the new perio anatomic inserts P15, P16R, P16L



By Mectron spa

Mectron has recently launched on the market 3 new ultrasound inserts specially designed to perform gentle and safe periodontal debridement.

The inserts guarantee maximum efficacy without risk of injury to the soft tissues and the periodontal ligament.

The inserts' shape allows optimal access to the areas difficult to reach and characterized by deep periodontal pockets (furcations, root surfaces, concavities).

The preserved tissues allow a new attachment formation.

The cavitation effect allows mechanical biofilm disruption, bacteria dispersion and periodontal pockets detoxification, thanks to the oxygen delivery.

The inserts in detail:

P15: universal curette for supra and subgingival treatment. Recommended for the debridement of deep periodontal pockets. Easy ac-

cess to canine and anterior teeth. Replaces manual curettes n° 1-2, 3-4, 5-6, 7-8.

P16R – P16L: right (P16R) and left (P16L) angled periodontal curettes for subgingival concretions and biofilm removal from furcations and deep pockets. Recommended for supra and subgingival interproximal spaces and for an efficient root planing on molars and premolars. Replace manual curettes n° 11-12, 13-14, 15-16, 17-18. [DT](#)

For more information contact:

mectron S.P.A.
Via Loreto, 15/A
16042 Carasco (GE) – Italy
Tel: +39 0185 35361
Fax: +39 0185 351374
E-mail: mectron@mectron.com
Web: www.mectron.com



P15



P16L



P16R

AD



PROMEDICA

Highest quality made in Germany





Light-curing radiopaque calcium hydroxide

- Higher compressive strength than conventional calcium hydroxides
- Excellent adhesion, especially to composites
- Effective pulp protection
- Acid resistant
- Radiopaque



Temporary crown & bridge material

- Less than 5 min. processing time
- Strong functional load
- Perfect long-term aesthetics
- Excellent biocompatibility



Glass ionomer filling material

- Variable mixing time for adjustment of consistency
- Modulation is possible right after insertion
- Perfect marginal adaption
- High compressive strength and abrasion resistance
- Easy activation without the need of an activator

Visit www.promedica.de to see all our products

PROMEDICA

Dental Material GmbH
24537 Neumünster / Germany
Tel. +49 43 21 / 5 41 73
Fax +49 43 21 / 5 19 08
eMail info@promedica.de
Internet www.promedica.de

Zenex Implant System
NEW PRODUCT

Multi Plus



Homepage



Facebook



Instagram

zenitoni@zenitoni.com/ +82-2-3664-2882

www.zenitoni.com

ZENITON

EyeSpecial C-IV

Smart Digital Dental Camera

By Shofu

Shofu's Gen 4 smart digital dental camera is developed to shoot fast, predictable and consistent clinical photographs for everyday dentistry.

Equipped with state-of-the-art digital technology, this foolproof, ultra-light and the compact dental camera is designed exclusively for your dental team to shoot clear, consistent clinical photos in true-colour each time.

No prior photography knowledge required, as it comes with a one-touch operation and an intuitive menu to guide the user to select from any of the 9 pre-set dental shooting modes. Easy to wipe clean and disinfect in between patients, it complies with stringent infection control protocols at the dental operatory.

This user-friendly camera is the ideal choice for your practice as it meets user-specific needs ranging from routine intra-oral photography, diagnosis and treatment planning, orthodontic evaluation, dental lab and specialist collaboration, patient communication and education to legal documentation and insurance verification.

EyeSpecial Features:

- 9 pre-set dental shooting modes
- Compact, Ultra-light & Easy to hold with one hand

- Fast auto-focus with built-in anti-shake with image stabilization and anti-reflection features
- Cutting edge Flashmatic System for True-colour reproduction with blackout of ambient light
- Water, chemical and scratch resistance to prevent cross-contamination
- Brilliant display with fast & Intuitive menu navigation
- Video function
- Micro HDMI connector
- QR code features
- Trigger Flash Mode for portrait photography
- Optional attachable cross polarizer [DT](#)

For further information, please contact:

SHOFU DENTAL ASIA-PACIFIC PTE LTD
10 Science Park Road, #03-12 The Alpha
Singapore Science Park II
Singapore 117684
Tel: (65) 6377 2722
Fax: (65) 6377 1121
E-mail: mailbx@shofu.com.sg
Web: www.shofu.com.sg



© Shofu

Cleaning, disinfection and sterilisation to protect dentists clinics and technicians laboratories against infection

By Zhermack

Just following the right procedure is not enough to ensure adequate protection against cross-infection between patients and personnel. Dental professionals also need safe, effective and broad-spectrum products.

Rapid action, practicality and high compatibility with dental clinic materials make Zeta Hygiene products ideal for demanding dental professionals and guarantee a high level of safety and protection for users and patients alike.

Zeta Hygiene is a complete range of cleaning, disinfecting and sterilising products, free from toxic substances like phenols and aldehydes and formulated for high compatibility with clinic and laboratory surfaces. These innovative products are manufactured to the strictest quality standards and tested to ensure conformity to the latest European regulations.



Zeta Hygiene products deliver effective solutions for maintaining a high level of protection. [DT](#)

Zhermack always has your safety in mind.

For more information contact:

Zhermack SpA
Via Bovazecchino
100 - 45021 Badia Polesine (RO), Italy
Tel: +39 0425 597611
Web: www.zhermack.com/en/



© Zhermack SpA

The One True Bio-Active INJECTABLE

NEW WITH X-FACTOR

Smart Solution for
Predictable Restorations

Xceptional
Aesthetics

Xtra
Strength

Xcellent
Protection



For more information, please contact your nearest Shofu Dealer TODAY !



SHOFU DENTAL ASIA-PACIFIC PTE. LTD.
www.shofu.com.sg

Official Partner



This is how laboratories can benefit from digitisation

Amann Girschbach presents attractive gateways to the future at a virtual congress

By Amann Girschbach

Digitisation is the key topic of the future for the dental industry. No doubt this necessitates change, but it also offers lucrative opportunities. Amann Girschbach will be showcasing how these opportunities can be easily exploited from April 20 to 24 in the innovative AG.Live CON virtual congress. Renowned dental technicians and clinicians will meet with leading minds in research to explore the attractive avenues into advanced digitization. Amann Girschbach will not be participating to the usual extent at the International Dental Show IDS in Cologne in 2021, which has been postponed to September.

For many years now, Amann Girschbach has been supporting dental technicians in the digitisation of



their workflows with its innovative power. Stemming from its pioneering role, the Austrian company also

supports laboratories and clinicians in taking the next step towards digital transformation. The trend is

evidently clear: the demand for direct straightforward restorations is becoming increasingly greater. This threatens to break down established structures and traditional boundaries between the laboratory and the clinician. However, digitisation is ideally suited to expand the win-win situation of dental technicians and clinicians through new forms of collaboration. And the well-being of the patient always remains the focus.

To provide optimal networking for both sides, Amann Girschbach has developed the AG.Live platform, which is now being presented as part of the virtual congress and expo. AG.Live provides infrastructure and patient case management with a level of consistency and efficiency which has never been achieved before. For example, this will make it possible to

offer laboratory-quality direct restorations. And the expertise of the dental technician is permanently available to the dentist. Even in the case of simple restorations, a joint decision can be made quickly as to whether direct implementation is possible or whether the specialist in the laboratory is required. **DT**

For further information and registration for the virtual congress with expo go to: show.aglivecon.digital

For more information contact:

Amann Girschbach AG
Herrschaftswiesen 1
A-6842 Koblach/Austria
Tel: +43 5523 623 33-0
E-mail: austria@amanngirschbach.com

Dentsply Sirona's new Surefil one: An innovation in restorative filling materials

By Dentsply Sirona

Direct posterior restorations make up two thirds of all direct restorations in a dental practice¹ and composite resin is the preferred material of choice for these restorations.² Yet, one out of four cases can be defined as challenging due to isolation control, patient compliance or the margin being sub-gingival.³ Due to the technique sensitivity of resin-based materials, composites are not the material of choice for these situations. Surefil one from Dentsply Sirona now offers an ideal alternative for these situations by providing the convenience of a glass ionomer with the durability of a composite.

A growing number of patients today are requesting amalgam free restorations for aesthetic and environmental reasons. The alternatives to amalgam are resin-based composites or glass ionomers. Composites require complete isolation throughout the



A real alternative for treating patients with a tooth-colored restoration quickly, safely, and permanently: posterior restorations with the new Surefil one.

entire procedure and have a sensitive adhesive technique to ensure maximum adhesion is obtained between the composite and tooth structure. Because the composite procedure can be time consuming and isolation is critical, it is not the preferred material for certain clinical situations. Alternatively, many glass ionomers available today are not indicated for use as a permanent restorative material due to their inferior mechanical properties. This

can lead to premature failure and required re-treatment at the expense of the clinician resulting in patient dissatisfaction and practice inefficiencies. Surefil one, an innovative filling material, now offers an ideal alternative. Procedures can be performed quicker than using composites with a more durable outcome than glass ionomers.⁴ Surefil one is available in five shades: Bleach White, A1, A2, A3, and A3.5.

Convenience and Durability

For the first time ever, the simplicity of a glass ionomer and the durability of a resin-based composite have been combined to create an entirely new material class, the first ever self-adhesive composite hybrid.

Surefil one has an unlimited depth of cure - providing assurance in very deep cavities that a complete cure will be obtained without layering. It can also be light cured, so the restoration can be finished and polished immediately after surface light curing. Studies have demonstrated that Surefil one restorations are as durable as a composite: in chewing simulations, it was shown that after 500,000 cycles, no evidence of fractures or damage was present

while the glass ionomers tested in this chewing simulation partially showed fractures after fewer than 100,000 chewing cycles.⁵

Shorter treatment time due to faster, more efficient handling

Fewer steps in the procedure make the restorative treatment even more efficient and faster. With Surefil one, dentists can fill a cavity in just one layer, without etching or bonding, minimizing the window of risk for when contamination can occur during the procedure.

The reduced procedure time is a clinical advantage especially in cases where isolation is a challenge or patient compliance is not ideal.

Surefil one joins the trusted Class II Solution family

Surefil one now joins the Class II Total Practice Solution from Dentsply Sirona as the solution for challenging Class II situations. Acknowledging that the clinical requirements for a successful Class II restoration change based on the situation, the treatment recommendations differ. In challenging situations when isolation becomes the critical factor in determining success of the restoration, the Class II Total Practice Solution with Surefil one from Dentsply Sirona is an excellent solution.

"Surefil one is a great innovation for the dental practice" said Dr. Chris Campbell of Columbia, SC. "One of the things we look for as dentists are products that solve real-world issues that we encounter each and every day. Surefil one allows us to predictably restore teeth in compromised clinical situations. Whether it's difficult isolation, a challenging patient, or any other situation that is inher-

ently unpredictable, Surefil one rises to the task unlike any restorative material we've had up to this point in our profession".

Conversely, when the situation is ideal, in approximately 3 out of 4 cases⁶, adaptation at the floor of the proximal box becomes the critical factor in determining success of the restoration. In those scenarios, the Dentsply Sirona Class II Total Practice solution with market leading SDR flow+ material is recommended. **DT**

References

1. American Dental Association Procedure Recap Report, 2006.
2. The Key Group Omnibus survey, 2018, USA.
3. Data on file.
4. Prof. Frankenberger. Amalgam Alternatives Critically Evaluated: Effect of Long-term Thermomechanical Loading on Marginal Quality, Wear, and Fracture Behavior. Journal of Adhesive Dentistry 2018; Vol. 22(1): p.107-116

Further information on Surefil one can be found at www.dentsplysirona.com/surefilone

For more information about the full Dentsply Sirona portfolio, please contact your local representative.

Dentsply Sirona
21st Floor, The Bay Gate Tower
Business Bay, Al Sa'ada Street
Dubai, United Arab Emirates
Tel.: +971 (0)4 523 0600
Web: www.dentsplysirona.com/en
E-mail: MEA-Marketing@dentsplysirona.com



Surefil one offers a real alternative for these situations by providing the convenience of a glass ionomer with the durability of a composite.





AMANNGIRRBACH

WE ARE ONE

#DentistryUnified



AGLIVECON

DIGITAL DENTAL CONFERENCE + EXPO
APRIL 2021

register to unify:
show.aglivecon.digital

Amann Girschbach AG
Fon +43 5523 62333-105
www.amanngirschbach.com