

today



Scanning made easy with a simple touch

The same intraoral scanner – with the same speed and accuracy – but now wireless.

»page 4



Convenience without the bulk

New water flosser is made for those patients with rooms a little on the smaller side.

»page 6



A chair that hits in all the right places

Looking for an ergonomical option for your dental seat? You've come to the right place.

»page 7

Back in person again

Attendees head into the exhibit hall during a past CDA Presents The Art and Science of Dentistry. After three years, the meeting is finally back in-person. (Photos/ today Staff file photo)



It's been three years since the CDA Presents The Art and Science of Dentistry was last held at the Anaheim Convention Center, but after two years of a virtual meeting, it is finally back in person.

The California Dental Association expects more than 17,000 dentists, dental professionals and students from across the United States to attend the first in-person Anaheim convention since 2019.

The three-day meeting features educational courses and a sprawling exhibit hall offering opportunities to shop with more than 320 companies

»see BACK, page 2

Get assistance from CDA's vetted partners for your dental practice

The California Dental Association carefully evaluates dental programs and services designed to meet the financial and operational needs of every dental practice. The businesses endorsed by CDA offer members exclusive savings while assisting them with the business side of dentistry.

You can find some of these trusted business partners here in exhibit hall.

Achieve compliance

Benefit from the expertise and tools of dentistry-focused partners who are committed to keeping your practice in compliance with ever-changing

regulations affecting dentistry in California.

- Explore Henry Schein One's exclusive pricing on e-prescribing software to keep in compliance and offer patients confidence at booth No. 1262.

- Get discounts on human resources solutions from HR for

Health, designed just for healthcare professionals, at booth No. 801.

Control expenses

Get support managing the expenses of running a practice, from member-exclusive credit cards to dental sup-

»see PARTNERS, page 2

BACK *from page 1

and save on the latest dental products and technology.

The CDA party at the Grand Plaza is also making a return, and other special events are planned for all three days of the convention.

"CDA and the CDA Presents Board of Managers is excited to welcome back our members, vendors, auxiliaries and friends to our first in-person event in Anaheim since 2019!" said Valerie Harada, DDS, program chair for Anaheim 2022, in a statement before the event.

More than 200 in-person lectures and workshops are planned for the event. CDA will also livestream 12 courses for remote attendance.

Detailed information about registration, course formats, COVID-19 safety protocols and more are available in the attendee FAQ, located at www.cda.org/Home/News-and-Events/CDA-Presents/Attendees/Attendee-FAQs.

Headlining speakers will present courses in restorative dentistry, occlusion, forensic dentistry, implants, oral pathology and prosthetic dentistry, while other courses explore hot topics such as green dentistry and TMJ.

A workshop will demonstrate an examination for oral cancer, and a unique mock trial led by experienced courtroom lawyers with dental expertise will illustrate just how difficult it can be to defend against an accusation of dental malpractice.

Other highlights include:

- Jeff Brucia, DDS, co-director of the FACE occlusion study group, presenting the live demonstration "Deep Dive FACE: Centric Determination" at 11:30 a.m. Friday.
- Lee Ann Brady, DMD, along with Dr. Brucia, Frank Curry, DDS, and Leonard Hess, DDS, co-presenting an occlusion panel presentation allowing attendees to learn from, question and compare the teaching objectives from the Dawson Academy, the FACE Foundation and the Pankey Institute — three of the oldest and



Attendees head into the Anaheim Convention Center during a past CDA Presents The Art and Science of Dentistry. This year's meeting goes until Saturday.

most respected functionally directed programs in dentistry. The lecture starts at 8:30 a.m. Friday.

- Marcos Vargas, BDB, DDS, MS, presenting three workshops and one lecture on restorative dentistry.
- Tara Aghaloo, DDS, professor in oral and maxillofacial surgery at the UCLA School of Dentistry, presenting three lectures on implants today.
- Nathaniel Lawson, DMD, PhD, director of the division of biomateri-

als at the University of Alabama at Birmingham School of Dentistry and program director of the biomaterials residency, teaching four courses on dental materials.

For more information on courses, exhibitors and special events, head to www.cda.org/Home/News-and-Events/CDA-Presents.

(Source: California Dental Association)

PARTNERS *from page 1

plies from trusted brands. These partners can help you optimize savings and control costs.

• Flex your cash flow with a card designed just for dentists and earn extra reward points for your ADA, CDA and practice-related purchases. Explore the benefits of the ADA Visa Credit Card at booth No. 654.

• Get smart guidance, competitive rates and reduced fees on practice solutions that help you purchase, restructure or grow with Bank of America Practice Solutions at booth No. 709.

- Get competitive prices on dental supplies you love from brands you trust through membership's collective purchasing power with TDSC.com. Start saving at booth No. 1223.

Generate revenue

Optimize revenue streams with assistance from partners who help you build your patient base and deliver solutions for easier patient financing, revenue cycle management and dental billing.

- Increase case acceptance with friendly options for patient financing and connect to new patients who are seeking to finance treatment

with CareCredit. Find out more at booths Nos. 703 and 706.

• Operate with more ease and at efficient scale by maximizing collections and reducing AR days with HIPAA-compliant revenue cycle management service Cosentus. Meet the team to learn more at booth No. 700.

• Increase your income by outsourcing your patients' dental insurance billing with HIPAA-compliant claims processing services from eAssist. Untap this revenue stream at booth No. 707.

(Source: California Dental Association)

today About the Publisher

Tribune America, LLC
118-35 Queens Blvd., Ste. 400
Forest Hills, N.Y. 11375
Phone: (212) 244-7181
E-mail: info@dental-tribune.com
www.dental-tribune.com

Publisher & Chairman
Torsten Oemus
t.oemus@dental-tribune.com

President/Chief Executive Officer
Eric Seid
e.seid@dental-tribune.com

Group Editor
Kristine Colker
k.colker@dental-tribune.com

Product/Account Manager
Humberto Estrada
h.estrada@dental-tribune.com

Product/Account Manager
Maria Kaiser
m.kaiser@dental-tribune.com

Client Relations Coordinator
Lee Colquhoun
l.colquhoun@dental-tribune.com

Accounting Department
Nirmala Singh
n.singh@dental-tribune.com

Published by Tribune America
© 2022 Tribune America, LLC
All rights reserved.

dti Dental Tribune International

today CDA Presents The Art and Science of Dentistry Show Dailies Vol. 14 appear during the CDA Presents meeting in Anaheim, California, May 12-14, 2022.

Tribune America makes every effort to report clinical information and manufacturers' product news accurately, but cannot assume responsibility for the validity of product claims, or for typographical errors. The publishers also do not assume responsibility for product names or claims, or statements made by advertisers.

Opinions expressed by authors are their own and may not reflect those of Tribune America or Dental Tribune International.



**PRR & SMALL CLASS I
PROCEDURES ARE
FASTER & EASIER
USING
BEAUTIFIL KIDS SA,
BIOACTIVE
SELF-ADHESIVE
FLOWABLE COMPOSITE!**



**Anti-Bacterial
Protection**



**Prevents Secondary
Decay***



Acid Neutralization



**Up to 30% Savings
Over Other Brands**

*8-Year independent clinical study recorded 100% retention rate, no secondary caries, failures, or postoperative sensitivity.



Minimal bacterial
colonization



Advanced bacterial
colonization



Shukan C. Kanuga, DDS



Mounika Falemban, DMD



NEW!

BEAUTIFIL® kids SA

Bioactive Self-Adhesive Nano-Hybrid Flowable

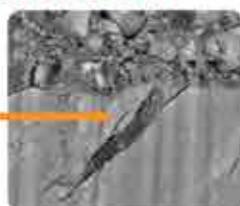
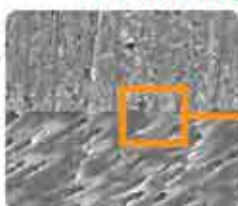
ELIMINATED THE TECHNIQUE SENSITIVE BONDING STEP!

- > Ideal handling for precision placement
- > High bond strength for reliable adhesion
- > Therapeutic bioactive Giomer Technology
- > Indicated for PRR and small Class I
- > Great for restless pediatric patients
- > Two shades, primary and permanent

Resin Tag Infiltration

Beautifil
Kids SA

Dentin



**POST YOUR PICTURE
WITH DR. ANIME
GET A FREE SAMPLE!
VISIT BOOTH 1128**



**BIOACTIVE.
GIOMER TECHNOLOGY.
THE BETTER CHOICE.**

**Visit shofu.com
Call 800.827.4638**

Shofu Dental Corporation San Marcos CA 92078



Medit i700 wireless: Scanning made easy with a simple touch

By Medit Staff

■ Moving beyond the proven tech and best-selling success of the i700 intraoral scanner, Medit has announced the release of the i700 wireless — newly designed as a portable wand with the same speed, accuracy and lightness.

“We’re tirelessly listening to our customers to provide them with the utmost customer care, which is at our core to continuously evolve,” said GB Ko, CEO of Medit. “Our i700 wireless model is a game-changer with its effortless, wire-free capabilities and powerful, long-lasting battery.”

Free from wires, the light, weight-balanced i700 wireless offers a smooth and quick scanning experience utilizing mm wave-based next-generation wireless communication

Here in Anaheim

To learn more about the i700 wireless intraoral scanner, stop by the Medit booth, No. 1370.

technology, according to the company. One battery offers one hour of continuous scanning and eight hours in standby mode.

The camera captures up to 70 frames per second, collecting more data with each pass, in realistic color and crisp images, the company asserts. The updated design boasts a reversible tip and wider scanning area, allowing for scanning at any angle with no constraints to movement.

To counter COVID-19 concerns, a remote-control button means clini-

cians can check scan data from the scanner and show patients without worry of cross-contamination. The self-disinfecting UV-C LED further keeps the unit clean.

For a complete, trouble-free experience, the i700 wireless runs on Medit Link, Medit’s software featuring integration with various other CAD/CAM providers as well as Medit’s own apps, including Medit Design, Smile Design, Ortho Simulation, Model Builder, Crown Fit and more.

“Packed with the latest Medit technology, the i700 wireless continues our commitment to delivering an amazing digital dentistry experience through better tools and solutions,” said GB Ko.

For more information about Medit products and software, visit Medit’s official website, www.medit.com.



• The new i700 wireless intraoral scanner. (Photo/Provided by Medit)

AD

2022 AAID ANNUAL CONFERENCE
SEPTEMBER 21-24 | DALLAS, TEXAS

ZERO IN ON ZERO COMPLICATIONS

How to prevent complications by
zeroing in on the challenges

REGISTRATION
OPENS SOON
bit.ly/AAIDAnnual22

Top 5 Reasons to Attend

- ★ Implant dentistry from Abutment to Zygomatic ★
- ★ Earn 40.5+ AGD PACE / ADA CE credits ★
- ★ Choose from 27 hands-on workshops and 24 seminars ★
- ★ Programming for all education levels ★
- ★ Celebrate at the “Denim & Diamonds” President’s Reception ★

AAID
AMERICAN ACADEMY
OF IMPLANT DENTISTRY



Turn Your Data Into Dollars

Your practice management software is full of critical data that could help you make better decisions and be more productive and profitable — if you knew how to find and use it. Jarvis Analytics for Private Practices unleashes dark data deep inside your practice so you can track and view everything in real-time, find hidden production opportunities and fill your schedule.

With Jarvis Analytics, your data becomes the engine for your growth.

Schedule a Demo at: JarvisAnalytics.com



The performance you want with the convenience you need

By Water Pik Staff

■ Waterpik Ion Professional Cordless Model provides maximum performance with cordless convenience, according to the company.

Ion Professional is 30 percent smaller than traditional performance models and has a lithium ion battery that lasts up to four weeks per charge. According to the company, Ion is great for small bathrooms or bathrooms that have less than ideal outlet setups.

This model gives patients all the functionality of a traditional model without having to plug in the unit while water flossing. ION removes up to 99.9 percent of plaque from treated areas and is up to 50 percent more effective for improving gum health vs. string floss.

Ion Professional comes with seven

Here in Anaheim

To learn more about the Waterpik Ion Professional Cordless Model, stop by the booth, No. 1116.

tips and a tip case, including the new Implant Denture Tip, designed to clean under implant retained dentures.

Ion has 10 pressure settings, ranging from 10 psi to 100 psi, 90 seconds of flossing time (no refills needed), swivel base on handle and global voltage.

Patients should be instructed to use warm water, look into the sink while water flossing and start on a low pressure, gradually increasing to a medium pressure over time.

For patients who prefer the

higher settings, research has shown that even on the highest pressure settings, the Waterpik Water Flosser is safe on the gingival tissue and epithelial attachment.

Waterpik is considered to be the No. 1 recommended water flosser brand, according to the company, and it is clinically proven and accepted by the American Dental Association.



• The Waterpik Ion Professional Cordless Model. (Photo/Provided by Water Pik)

AD



52ND ANNUAL SESSION
NOV 2-5 • AUSTIN

Prosthodontics Reimagined: Thriving in a New Era

Full-Arch Implant Treatment

Digital Innovations

Roundtable Discussions

Learning from Failures

Purpose, Vision & the
Future of the Specialty

ACP52.com

**SAVE
THE
DATE**

**NOV 2-5,
2022**

**LEARN
MORE AT
ACP52.COM!**



• The Flex Saddle Stool is built with RGP's traditional hydraulic support system and comes with a double foam backrest. (Photo/Provided by RGP)

A chair that hits in all the right places

Find more ergonomic seating options at booth No. 1335 during the CDA Presents

By RGP Staff

■ RGP is back leading the way in innovation and design in the dental ergonomic seating sector, according to the company.

Nestled in a quaint New England coastal town in the smallest state in the country — Rhode Island — RGP is known for its excellence in dental seating and a high focus on ergonomic options to fully support the backs of its many loyal customers, the company asserts. Now, RGP has introduced its newest model, the Flex Saddle Stool.

Built with RGP's traditional hydraulic support system, this chair comes with a double foam backrest pad that hits in all the right places and

Here in Anaheim

To see and try the Flex Saddle Stool and other RGP chairs, stop by the booth, No. 1335, and ask about the company's show specials.

a premium foam seat cushion that can be tilted forward or reclined back.

The new Flex Saddle helps promote a healthy spinal curve and relieves hip and leg pressure while maintaining great lumbar support during both working and passive situations, according to the company.

Stop by booth No. 1335 to try the RGP chairs and see what kind of show promotions are being offered here at the CDA.

New EyeCam gets clean images with the press of a single button

By Shofu Dental Staff

■ The EyeCam is a fixed focus intraoral camera that produces clear, high-quality images with a single button press.

The EyeCam is the newest addition to the Shofu camera family.

With an exclusive California Dental Association meeting offer of \$249, a one-year warranty and a free two-year protection plan, this intraoral camera can be installed quickly, is easy to use and integrates with most dental

Here in Anaheim

To learn more about Shofu's new EyeCam intraoral camera, stop by the booth, No. 1128.

imaging software, according to the company.

More information will be available at Shofu's booth, No. 1128.

• The new EyeCam. (Photo/Provided by Shofu Dental)





Magic Made Easy with a Simple Touch

Introducing the MEDIT i700 wireless
We've made scanning easier than ever

Everything you need for digital dentistry power

Wireless Wand that Wows - One-touch ease and movement

Best Battery Life - 1 hour of continuous scanning, up to 8 hours in standby mode

Cutting-edge Technology - Fast and accurate scanning powered by the most advanced A.I. technology

Supercharged Yet Light - Comfortable, effortless scanning

MEDIT i700 wireless