

# today



### Get passionate

Remember how excited you were about dentistry back in the beginning? Make sure you always feel that way.

»page 4



### A camera designed just for you

Dental photography requires special needs, and this camera just may fit the bill for all of them.

»page 6



### A different way to check for caries

Detecting caries may never be simpler (not to mention more accurate or helpful).

»page 9

## ‘One of the best’



### CDA Presents kicks off its annual meeting with new ways to help better your practice

■ If you're looking for the best this week – whether it be in educational opportunities or new products and technology – you are in the right place. For the next three days, CDA Presents The Art and Science of Dentistry has you covered.

“We expect this show to be one of the best we have put on in San Francisco,” said Del Brunner, DDS, CDA Presents Board of Managers chair. “We strive to adapt and enhance our programs based on what members want and need to help them better their practices.”

• Catch a cable car at Market and Powell, just a couple blocks from the Moscone Center. (Photo/Robert Selleck, *today* Staff)

\*see *BEST*, page 3

## Get to know the CDA Foundation here in San Francisco

■ The CDA Foundation will host several activities here at CDA Presents The Art and Science of Dentistry, offering multiple ways for you to learn a little more about the organization and to support its causes.

Through the generosity of volunteers and donors, the CDA Foundation has helped many Californians in need through its two flagship programs: CDA Cares and the Student Loan Repayment Program.

In addition, the CDA Foundation provides dental materials and also supplies grants to community-based organizations to help provide access to care for California's most vulnerable citizens.

### Learn more

For more information about the CDA Foundation, visit [cdfoundation.org](http://cdfoundation.org).

Here is a look at the foundation events taking place:

- **Wine Wall.** With a \$20 donation, participants can pull any bottle of wine from the “wine wall” at the CDA Foundation booth (No. 802) on the exhibit hall floor. You may pick a bottle worth \$100, and some lucky choosers will find a gift card paired with their bottle selection as well.
- **The Spot.** CDA Foundation Chairman Don Rollofson, DMD, will speak

on Friday at The Spot about CDA's role in helping California's underserved patients. Learn how volunteering to help underserved patients can make lasting change. Rollofson will be speaking from 2 to 3 p.m.

- **CDA Cares Chair Sponsorships.** Become a CDA Cares Chair Sponsor and receive a CDA Cares scrub jacket. To date, CDA Cares has provided \$7.5 million in dental care to 10,040 people who experience barriers to care. For every \$100 contributed, \$1,100 in care is provided.
- **CDA Foundation Scrubs.** Visit the CDA Store and purchase CDA Foundation scrubs. Your purchase goes to support the work of the CDA Foundation.



• Donate \$20 and get a chance to pull a bottle of wine from the 'wine wall.' (Photo/Provided by [freeimages.com](http://freeimages.com))



# EyeSpecial C-II

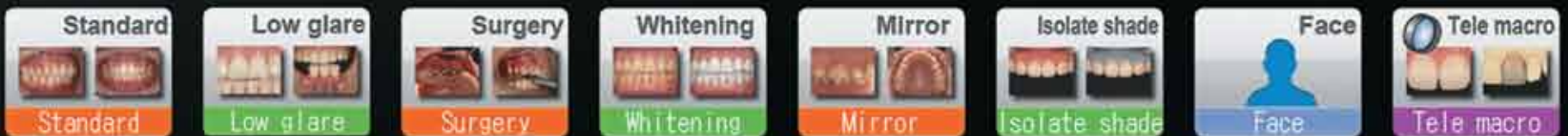
**NEW!**  
Visit us  
**Booth #1326**



Built in dental cropping grid lines to get a clear and concise image, the first time.



## SMART DIGITAL CAMERA, DESIGNED EXCLUSIVELY FOR DENTISTRY



- 8 clinical shooting modes - easier, faster and more reproducible images
- Water and chemical resistant - essential for infection control in the office
- Small in size, easy to hold with one hand - anti-shake mode built in
- Large LCD touchscreen - works with exam gloves
- Exceptional depth of field range





## today About the Publisher

Tribune America, LLC  
116 W. 23rd St., Suite 500  
New York, N.Y. 10011  
Phone: (212) 244-7181  
Fax: (212) 244-7185  
E-mail: [info@dental-tribune.com](mailto:info@dental-tribune.com)  
[www.dental-tribune.com](http://www.dental-tribune.com)

**Publisher & Chairman**  
Torsten Oemus  
[t.oemus@dental-tribune.com](mailto:t.oemus@dental-tribune.com)

**President/Chief Executive Officer**  
Eric Seid  
[e.seid@dental-tribune.com](mailto:e.seid@dental-tribune.com)

**Group Editor**  
Kristine Colker  
[k.colker@dental-tribune.com](mailto:k.colker@dental-tribune.com)

**Managing Editor**  
Fred Michmershuizen  
[f.michmershuizen@dental-tribune.com](mailto:f.michmershuizen@dental-tribune.com)

**Managing Editor**  
Sierra Rendon  
[s.rendon@dental-tribune.com](mailto:s.rendon@dental-tribune.com)

**Managing Editor**  
Robert Selleck  
[r.selleck@dental-tribune.com](mailto:r.selleck@dental-tribune.com)

**Product/Account Manager**  
Humberto Estrada  
[h.estrada@dental-tribune.com](mailto:h.estrada@dental-tribune.com)

**Product/Account Manager**  
Will Kenyon  
[w.kenyon@dental-tribune.com](mailto:w.kenyon@dental-tribune.com)

**Marketing Director**  
Anna Kataoka  
[a.kataoka@dental-tribune.com](mailto:a.kataoka@dental-tribune.com)

**Education Director**  
Christiane Ferret  
[c.ferret@dtstudyclub.com](mailto:c.ferret@dtstudyclub.com)

**Accounting Department**  
Nirmala Singh  
[n.singh@dental-tribune.com](mailto:n.singh@dental-tribune.com)



**Published by Tribune America**  
© 2014 Tribune America, LLC  
All rights reserved.

today CDA Presents The Art and Science of Dentistry Show Dailies Vol. 6 appear during the CDA Presents in San Francisco, Calif., Sept. 4–6, 2014.

Tribune America makes every effort to report clinical information and manufacturers' product news accurately, but cannot assume responsibility for the validity of product claims, or for typographical errors. The publishers also do not assume responsibility for product names or claims, or statements made by advertisers.

Opinions expressed by authors are their own and may not reflect those of Tribune America or Dental Tribune International.

### BEST \*from page 1

C.E. highlights include "Detection and Diagnosis of Oral Lesions for the General Practitioner: A Hands-on Cadaver Course," led by Homayon Asadi, DDS, and William M. Carpenter, DDS, MS; "Practice Assessment: How Healthy Is Your Business?" led by Michael W. Perry, DDS, and Robyn Thomason, CDA Practice Support director; and "Alternatives to Surgical-Prosthetic Implants in the Absence of a Central Incisor," led by Miguel Angel Diez Gurtubay, MsC.

In addition, there will be three opportunities to attend TDIC's new risk-management seminar, "Beyond the Science: Patient Emotions in Dentistry." This course will present real case studies to dentists and staff members to help them recognize when and

how to dismiss a patient without placing them at risk, establish trust in the doctor-patient relationship to encourage treatment compliance and create office protocols to instill confidence in the dentist and staff.

The seminar takes place from 9:30 a.m.–12:30 p.m. and 2–5 p.m. today and from 9:30 a.m.–12:30 p.m. Friday.

### Exhibit hall

Over in the exhibit hall, more than 375 companies are offering up myriad product launches, allowing dentists the ability to stay current on the latest technology trends in the industry.

One booth you won't want to miss is Intuit Demandforce, which will pay for the annual CDA memberships for three dentists here at the show.

Demandforce, a marketing and communications system company

that specializes in patient recall, will be giving away the memberships at its booths (Nos. 913 and 2138). All dentists need to do is stop by the booths, scan their CDA Presents badge and get a scratcher that will determine if they win instantly.

### CDA app

To help plan your time here at the CDA Presents, download the CDA app, which offers easy access to schedules and speaker information, exhibitor and product listings, real-time alerts for such items as course availability, event photos and information on local hotels, restaurants and attractions.

The app is compatible with any smartphone operating on the iPhone or Android platform. There is also a mobile web version of the app available at [cdapresents.com/mobileapp](http://cdapresents.com/mobileapp).

AD

**AMERICAN ACADEMY OF IMPLANT DENTISTRY**

**ANNUAL EDUCATIONAL CONFERENCE**

Implant Dentistry  
**More than Magic**

*Practical Education for the Practicing Implant Dentist™*

18 hours of implant-specific Continuing Education

Learn about:

- Digital implant dentistry
- Soft tissue management
- Esthetics
- Simplification
- Complications

Learn from world-class presenters and your colleagues from throughout the world

**Save \$200**  
if you register by March 31, 2014

**NOV 5-8 2014**  
**HYATT REGENCY ORLANDO**  
(formerly The Peabody Orlando)  
**ORLANDO FLORIDA**

**AAID**  
Excellence in Implant Education for the 63rd Year  
[www.aaid.com](http://www.aaid.com)



# LVI Core I three-day course designed for doctors and their teams to learn together

By Mark Duncan, DDS, FAGD, LVIF, DICOI, FICCMO, Clinical Director, LVI

Welcome to CDA Presents The Art and Science of Dentistry, and congratulations on actively moving your understanding and professional success forward!

It is only through excellent education that we individually grow and develop as dental health professionals and, through that, build a practice

## For more information

For more information on the Las Vegas Institute for Advanced Dental Studies, visit [www.lviglobal.com](http://www.lviglobal.com).

that is not just successful but delivers comprehensive and high-quality care.

As a patient, I expect the best care I can find. As a doctor, I want



The Las Vegas Institute for Advanced Dental Studies. (Photo/Provided by LVI)

to deliver the best care possible. That takes us to the power of continuing education, and, as doctors, we are

faced with many choices in continuing education.

As a way to introduce you to the Las Vegas Institute for Advanced Dental Studies, or LVI, I want to outline what LVI is about and what void it fills in your practice. The alumni who have completed programs at LVI were given an independent survey, and unlike the typical surveys, 99.7 percent said they love practicing dentistry, and of those surveyed, 92 percent enjoy their profession more since they started their training at LVI. That alone is reason enough to go to LVI and find out more.

While the programs at LVI cover the full breadth of dentistry, the most powerful and life-changing program is generally reported as being Core I, or "Advanced Functional Dentistry – The Power of Physiologic Based Occlusion." This program is a three-day course that is designed for doctors and their teams to learn together about the power of getting their patients' physiology on their side.

In this program, doctors can learn how to start the process of taking control of their practice and start to enjoy the full benefits of owning a practice and providing high-quality dentistry. Regardless of whether it is a solo practice or a group setting, every doctor can start the process of creating comprehensive care experiences for his or her patients.

We will discuss why some cases doctors are asked to do are actually dangerous ones to restore cosmetically. We will discover the developmental science behind how unattractive smiles evolve and what cases may need the help of auxiliary health-care professionals to get the patient feeling better.

The impact of musculoskeletal signs and symptoms will be explored, and we will look at how the supporting soft tissue is the most important diagnostic tool you have – not simply the gingiva but the entire soft-tissue support of the structures, in the mouth and also in the rest of the body.

A successful restorative practice should not be built on insurance reimbursement schedules. An independent business should stand not on the whims and distractions of a fee schedule but rather on the ideal benefits of comprehensive care balanced by the patients' needs and desires.

Dentistry can be a challenging and thankless business, but it doesn't have to be. Through complete and comprehensive diagnosis, there is an amazing world of thank yous and hugs and tears that our patients bring to us when we change their lives. The Core I program at LVI is the first step on that journey. That's why when you call, we answer the phone: "LVI, where lives are changing daily!"

AD

## TORONTO ACADEMY of DENTISTRY 77<sup>th</sup> ANNUAL WINTER CLINIC IS ON THE MOVE FRIDAY, NOVEMBER 14, 2014



### CONTINUING EDUCATION FOR THE ENTIRE DENTAL TEAM

TORONTO CENTRAL DENTAL SOCIETY  
TORONTO EAST DENTAL SOCIETY  
NORTH TORONTO DENTAL SOCIETY  
WEST TORONTO DENTAL SOCIETY

For more information visit us at  
[www.tordent.com](http://www.tordent.com)



Winter Clinic 2014 is the opportune time for the entire dental team to network with colleagues in an engaging environment.

Get ready for the latest trends, techniques and technologies presented by a host of high level professionals.

Now in its 77th year, Winter Clinic is the most information-packed, dynamic program ever. Look forward to an exceptional line-up of sessions including **Core1** programs delivered by noted professionals in the dental industry.

Winter Clinic is your last opportunity to choose from a variety of **CE** credits before year end.

**Mark Your Calendars today for Friday, November 14th, 2014. Toronto Sheraton Centre**

Look for our regular updates in Oral Health and Oral Hygiene magazines and our website [www.tordent.com](http://www.tordent.com). Join our Facebook page for updates and engage your peers in conversation.

**See you at the Toronto Sheraton Centre!**



<https://www.facebook.com/TorontoAcademyOfDentistry>



**BREAKTHROUGH  
TECHNOLOGY**

# GIVE PATIENTS SENSITIVITY RELIEF

— LIKE NEVER BEFORE —



**1** STRIP

**10** MINUTES

— up to —

**1** MONTH  
OF PROTECTION\*

**Crest**  
**SENSI-STOP™**  
STRIPS



**NEW Crest SENSI-STOP STRIPS** are uniquely designed to deliver immediate relief right where patients need it. Extended contact locks in long-lasting protection.\*

©2014 Henry Schein, Inc. No copying without permission. Not responsible for typographical errors. Note: Participating in a promotional discount program (e.g., points, discount redemptions or other special awards) is only permissible in accordance with discount program rules. By participation in such program, you agree that, to your knowledge, your practice complies with the program requirements.

**HENRY SCHEIN®**  
DENTAL

To Order: 1-800-372-4346 8am-9pm (et)  
To Fax: 1-800-732-7023 24 Hours  
[www.henryscheindental.com](http://www.henryscheindental.com)

\* See package for usage instructions and additional information.

© 2014 P&G



Available through Henry Schein

Schein order code: 325-0161

Schein pricing:

6 strips per Pkg. .... \$12.99

4 Pkg. @ ..... \$12.49

12 Pkg. (Case) @ ..... \$11.99

continuing the care that starts in your chair **Crest + Oral-B**



# EyeSpecial C-II: A digital camera designed exclusively for dentistry

By Shofu Dental Corp. Staff

■ Shofu Dental Corp. announces the latest addition to its extensive product line: the EyeSpecial C-II Digital Dental Camera.

The EyeSpecial C-II digital dental camera is designed exclusively for dentistry and features 12 megapixels and eight shooting modes that are easier, faster and more reproducible

to ensure the best quality of images are achieved.

The EyeSpecial C-II offers a high-performance, 49 mm close-up lens, intuitive one-touch operations, an ultra-lightweight sleek body design and a large LCD touchscreen, which allows the user to view and scroll through images effortlessly, even with a gloved hand.

Designed to produce superb image

quality, EyeSpecial C-II has exceptional depth of field range, fast auto-focusing and anti-shake capabilities, as well as infrared, UV and anti-reflection filters to help achieve those high-quality images.

Although lightweight, the camera is very durable and will withstand the occasional mishandling. It is scratch- and scuff-resistant, as well as water and chemical proof, which is essen-

## Here at the CDA



Stop by booth No. 1326 to see a live demonstration of the EyeSpecial C-II Digital Dental Camera. The first five orders each day will receive a free storage case (\$100 value).

AD

## Core I: Advanced Functional Dentistry —

### The Power of Physiologic Based Dentistry

### The Future of Dentistry Awaits You

The LVI Core I program encompasses the principles in physiologic restorative concepts creating excellence in care for your patients and prosperity for you. This program will start you on a path to greater understanding and enjoyment of our profession while creating loyal, enthusiastic and grateful patients!

This exciting three-day, hands-on program shows you how to evaluate cases and educate your patients for advanced restorative dentistry and more comprehensive case acceptance. For many of your patients you will learn how to eliminate a lifetime of pain that no other medical professional has been able to address, and for some learn how you can actually save their lives!

In essence, become a mouth doctor with ability to do things you never were taught in dental school. You have patients in your practice RIGHT NOW that can benefit from these concepts and you have the opportunity to change their lives starting the day you return to your office.

Dr. Bill Dickerson, Dr. Heidi Dickerson and Dr. Mark Duncan will present this information in a practical, easy to understand manner where you will feel comfortable presenting these exciting and practice building new options to your patients on Monday. Don't miss this golden opportunity to find out about this incredible world of dentistry that awaits you!

**Core I guarantee: We are so sure you will be satisfied with this course that we offer a money back guarantee!**

“LVI has given me a new driving force in my career. It has recharged my enthusiasm for dentistry and made me realize that my career choice was not a mistake.”  
—Dr. Charles Shin, Stouffville, ON

“I wish I would have attended LVI earlier in my career. I still have time to make a difference but this info is too valuable to not be used throughout an entire dental career.”  
—Dr. Tim Stirmeman Algonquin, IL

“Not only did I learn what I didn't know about dentistry, I learned how to help my own long history of pain in the head and neck. Thanks for the missing link.”  
— Dr. Paul Bell, Denver, CO

**TO REGISTER**  
Email [Concierge@lviglobal.com](mailto:Concierge@lviglobal.com) or Call 888.584.3237  
[www.LVIGlobal.com](http://www.LVIGlobal.com)

Follow LVI TV for your weekly dental news @ [youtube.com/user/lvityv](https://youtube.com/user/lvityv)

**ADA CERP®** | Continuing Education Recognition Program  
Las Vegas Institute for Advanced Dental Studies, LVI Global, is an ADA CERP Recognized Provider. ADA CERP is a service of the American Dental Association to assist dental professionals in identifying quality providers of continuing dental education. ADA CERP does not approve or endorse individual courses or instructors, nor does it imply acceptance of credit hours by boards of dentistry. Concerns or complaints about a CE provider may be directed to the provider or to ADA CERP at [www.ada.org/goto/cerp](http://www.ada.org/goto/cerp).

**Upcoming 2014 DATES**  
October 1-3 - LVI (Las Vegas)  
December 10-12- LVI (Las Vegas)

**Upcoming 2015 DATES**  
February 25-27  
April 22-24  
September 23-25  
December 2-4

**LVI GLOBAL**

Academy of General Dentistry Approved ACE Program Provider  
FAGD/MAGD Credit Approval does not imply acceptance by a state or provincial board of dentistry or AGD endorsement.  
6/1/11-5/31/15

PACE  
Program Approved for Continuing Education

tial for infection control in the office.

Created for dental and orthodontic photography, case presentations and at the bench in a laboratory, EyeSpecial C-II is user friendly and can be held comfortably with one hand, freeing the other to use a cheek retractor or mirror.

Included with the EyeSpecial C-II is a 4 GB SD XC card, but the camera is also compatible with an Eye-Fi Pro X2 card, allowing images to be automatically transferred and uploaded onto a computer, tablet or smartphone.

With a retail price of \$2,795, EyeSpecial C-II comes with a 4 GB SD XC card, four AA batteries, a Kenko 49 mm macro lens for close-up shots, a computer connection cord and hand strap and a flash calibration card.

In addition, SureFile photo management software is available for free download. This software will allow the user to automatically sort and file images by patient name or ID number, saving time and improving HIPA standards.

Shofu's EyeSpecial C-II is designed exclusively for dentistry and adds consistent efficiency to all your dental photography needs.

It is available at [www.shofu.com](http://www.shofu.com) or contact Shofu Dental Corp. at (800) 827-4638.

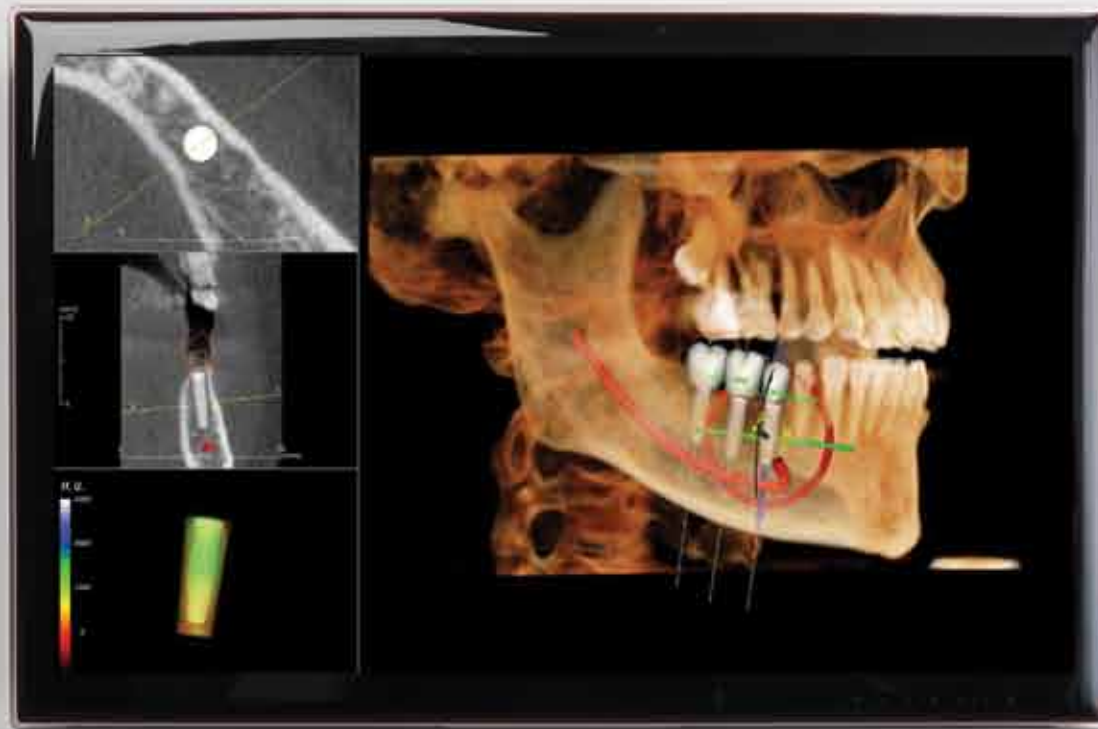


• Purchase the EyeSpecial C-II Digital Dental Camera for \$2,795 and get a storage case for free. (Photos/Provided by Shofu Dental Corp.)



# INTRODUCING THE i-CAT FLX MV

Delivering the **image quality and control** you expect from i-CAT



**i-CAT™** **FLX**  
MV

The i-CAT FLX MV (medium field-of-view) Cone Beam 3D solution is perfect for periodontists. Capture high resolution, 3D volumetric images for a more thorough analysis of bone structure as well as sinus and nerve location. The system provides a balance between image quality and dose, including a full dentition scan, with QuickScan+, at a comparable dose to a 2D pan\*, useful for progress scans. Our 3D treatment software, Tx STUDIO, helps you map an entire course of treatment from surgical placement of the implant and abutment, all the way to the final restoration. Universally compatible with all leading surgical guide providers, Tx STUDIO gives you the convenient ability to order guides directly through the software.

**Visit us at CDA in Booth #2016**

Available exclusively through

**HENRY SCHEIN®**  
DENTAL



[www.i-CAT.com](http://www.i-CAT.com) | 800.205.3570

\*Utilizing the i-CAT FLX QuickScan+ exposure protocol. Use of lower dosage imaging may only be suitable for certain diagnostic tasks. i-CAT FLX offers a variety of exposure protocols allowing clinicians to adjust dosage to specific diagnostic needs.



# Restoring the edentulous arch with BruxZir

Photos/Provided by Glidewell Laboratories



Fig. 1.



Fig. 2.



Fig. 3.



Fig. 4.

By Michael McCracken, DDS, PhD,  
and Jonathan P. Ouellette, DMD

Fixed hybrid dentures have been used to successfully restore fully edentulous patients for decades. Their durability, however, leaves room for improvement.

The BruxZir® Full-Arch Implant Prosthesis (Glidewell Laboratories; Newport Beach, Calif.) provides a restoration that is more durable in the long term, while sacrificing nothing when it comes to esthetics.

## Case report

The patient is a 58-year-old male with

## Here at the CDA

For more information on the BruxZir Full-Arch Implant Prosthesis, visit booth No. 1532.

no contraindications for implant treatment. The patient had a total of 11 Bio-Horizons® Internal Hex implants (Bio-Horizons; Birmingham, Ala.) placed, including six in the maxilla and five in the mandible (Figs. 1, 2). The implants integrated for more than six months, and the patient presented for restoration of his edentulous arches.

First, preliminary impressions of the implants were made. After removing the healing abutments, closed-tray impression copings were seated. The impressions were made in stock plastic trays, and the impression copings were placed back into the impressions before the case was sent off to the laboratory.

The laboratory poured casts from the initial impressions and fabricated bite blocks and occlusal rims for the centric jaw relationship (CJR) records. Each bite block contained two screw-retained temporary cylinders that allowed the wax rims to be screwed down, producing a very accurate CJR. The contoured rims were returned to the laboratory with the initial casts.

Upon receiving the wax rims and jaw relation records, the laboratory and dentist decided the patient required four multi-unit abutments in the anterior maxilla to ensure the screw access openings were within the confines of the planned prosthesis. At the next appointment, the patient's healing abutments were removed, and the multi-unit abutments were transferred to the patient's mouth and torqued into place. Later, wax setups were tried in and evaluated for proper esthetics, phonetics, contours, occlusion and tooth arrangement.

The implant verification jig (IVJ), which precisely captures the depth and angulation of the implants in the final impression, was seated and tightened into place. After bonding the individual sections of the IVJ together, a final impression was made.

The lab produced a fixed provisional appliance using precise CAD/CAM technology. The provisional implant prosthesis afforded the patient a trial period to evaluate the proposed restoration for esthetics and function (Fig. 3).

The final restoration was fabricated using the CAD design that was confirmed during the provisional trial period. The final prostheses were delivered without complication, exhibiting excellent fit, occlusion and esthetics (Fig. 4). The patient was exceptionally pleased with the function offered by this fixed restoration, which he should be able to enjoy for a great number of years given the extraordinary durability of BruxZir Solid Zirconia.

AD

# WORLD CONGRESS XXXI

## Tokyo, Japan

The Future of Implant Dentistry





# October 3-5, 2014

Tokyo International Forum Convention Center

For more information contact the ICOI Central Office at (973) 783-6300 or visit our website at [www.icoi.org](http://www.icoi.org)

**ADA CERP**® | Continuing Education Recognition Program

ICOI is an ADA CERP Recognized Provider. ADA CERP is a service of the American Dental Association to assist dental professionals in identifying quality providers of continuing dental education. ADA CERP does not approve or endorse individual courses or instructors, nor does it imply acceptance of credit hours by boards of dentistry. Concerns or complaints about CE provider may be directed to the provider or to ADA CERP at [www.ada.org/cerp](http://www.ada.org/cerp).



ICOI is designated as an Approved PACE Program Provider by the Academy of General Dentistry. The formal continuing education programs of this program provider are accepted by AGD for Fellowship, Mastership and membership maintenance credit. Approval does not imply acceptance by a state or provincial board of dentistry or AGD endorsement. The current term of approval extends from April 1, 2014 to March 31, 2018. Provider ID# 217378.



# Showcasing CariVu: A new approach to caries detection

By DEXIS Staff

■ The new CariVu™, a compact, portable caries detection device, is creating quite a buzz here at the CDA Presents.

If you have yet to stop by the DEXIS booth, No. 1802, to see this new product, then you owe it to yourself to take a look today.

DEXIS CariVu uses unique, patented transillumination technology to provide the ability to easily detect a range of carious lesions (occlusal, interproximal, recurrent) and cracks. This new system employs near-infrared light, which, in images, turns the natural tooth transparent and the caries dark, similar to radiographs, thus making it a view that is familiar to clinicians.

Not only are CariVu images easy to read and understand, they are captured and stored with the patient's other images in the DEXIS software.

Because all intraoral X-rays, camera and CariVu images for the select tooth appear side-by-side, the clinician can quickly compare them to make a diagnosis and decide on a course of treatment.

These images can also be shared with patients so they may better understand the need for preventive or restorative care.

The technology behind CariVu

offers an advantage in diagnosis of caries over systems that rely on fluorescence reactions, which are typically denoted by colors or numeric values.

In laboratory testing, this new transillumination device showed the view of the lesions on the images cor-

related well with their actual physical conditions.

With CariVu, the dentist therefore gains a more accurate view of the actual carious lesion's shape and size, not just an indication of the presence of decay.

Be sure to get your hands on CariVu in the DEXIS booth, No. 1802.

## Here at the CDA

To see the CariVu for yourself, stop by the DEXIS booth, No. 1802.



• The CariVu detection device. (Photo/Provided by DEXIS)

## Tell us what you think!

Do you have general comments or criticism you would like to share? Is there a particular topic you would like to see articles about in *today*? Let us know by emailing [feedback@dental-tribune.com](mailto:feedback@dental-tribune.com).

January 28 - February 1, 2015 | Exhibits: January 29 - 31, 2015  
Boston Convention & Exhibition Center

2015 BEYOND EXPECTATIONS

**SNEAK PEEK OF SPEAKER LINEUP**

**Gordon Christensen, DDS, PhD**  
Restorative

**Bruce Christopher**  
Practice Management

**Karen Davis, RDH**  
Hygiene

**Robert Edwab, DDS**  
Oral Surgery

**Debra Englehardt-Nash**  
Front Desk

**Kenneth Hargreaves, DDS, PhD**  
Endodontics

**Niki Henson, RDA**  
Auxiliary Techniques

**Paul Homoly, DDS**  
Practice Management

**Tieraona Low Dog, MD**  
General Health

**Stanley Malamed, DDS**  
Anesthesia and Emergency Medicine

**Joseph Massad, DDS**  
Dentures

**Linda Niessen, DMD**  
Geriatrics

**Kary Odiatu | Uche Odiatu, DMD**  
Nutrition

**Greg Psaltis, DDS**  
Pediatrics

**John Svirsky, DDS**  
Oral Pathology

CONNECT WITH US

**DENTAL TEAM PLAYBOOK:**  
**THE 360 EXPERIENCE**  
Join Edwin McDonald, DDS, Douglas Lambert, DDS, Theresa Johnson, RDH, and Lois Banta for a unique CE event for the entire dental team. Topics to include: embracing new materials and technologies; intra-office communication; case acceptance skills; and restorative dentistry.

**SPEAR EDUCATION**  
Two of the premier Spear educators, Drs. Gary DeWood and Steve Ratcliff, will be holding lectures "Occlusal Risks and Solutions" and "Making Complex Cases Simple," as well as a hands-on experience with "Treatment Planning and Equilibration."

**CONNIE PODESTA**  
Back by popular demand! Don't miss this powerful presentation on the value of relationships and communication with "Life Would Be Easy If It Weren't for Other People!"

**AADOM DAY @ YDC**  
A full day of learning catered to the Office Manager. Don't miss out on "The Marketing Experience - Common Sense, Not Rocket Science!"

**INTERPROFESSIONAL SYMPOSIUM**  
Don't miss this unique opportunity to learn from expert physicians from New England's premier hospitals. In particular, attendees will learn to recognize oral complications of medical issues, and whether or not to alter dental treatment because of underlying medical concerns.

yankeedental.com | 877-515-9071