

today



Scenes from the CDA Presents

Visit a brushing station, take a turn at the prize wheel and then relax with a massage.

»pages 4 & 6



New and improved, esthetically speaking

Don't let your patients settle for the same old dentures. Give them a more pleasing option.

»page 8



Just what you're looking for

There are a lot of products on the exhibit hall floor. Here are a couple you'll want to check out.

»page 12

Go product shopping



By Sierra Rendon, *today* Staff

■ If you came to San Francisco seeking the latest technology, products and services in dentistry, the exhibit hall featuring almost 400 booths at CDA Presents The Art and Science of Dentistry is an ideal place for you to conduct your search.

In addition to the all of the tried-and-true products that clinicians and dental staff have come to rely on, the CDA also has no less than 35 new products on the exhibit hall floor at this show.

Here is a sampling of the new products you may want to check out while here in San Francisco:

- *Get with Grush:* We all know how hard it can be to get kids to brush consistently and properly. But with the Grush – the gaming toothbrush – you might have a better shot! Grush transforms the chore of brushing into a fun and interactive game and offers

• Attendees head from one booth to the next Friday morning in the CDA exhibit hall, which features 375 exhibitors. (Photos/Sierra Rendon, *today* Staff)

»see *PRODUCT*, page 3

Last chance for education

By Sierra Rendon, *today* Staff

■ If you spent too much time wandering the aisles in the CDA exhibit hall and not enough time in the educational sessions, you still have plenty of opportunities to get caught up today!

Here are just a few of your options:

- “Social Media for Dentists” with Brad Newman in Moscone South 302 from 7:30-9:30 a.m. Learn how to main-

tain a social media conversation that is fresh, likable and targeted for the right audience.

- “Oral Cancer Screenings: If Not You, Then Who?” with Karen Davis, RDH, in Moscone South 307 from 7:30-10 a.m. In this course, you'll learn how to identify and instruct patients on how to reduce risk factors for oral cancer.

- “Minimally Invasive Restorative Dentistry” with Dr. Joel H. Berg in

Moscone South 200/212 from 9-11:30 a.m. This course will help you understand restorative approaches to caries management involving innovative treatment planning and materials.

- “Foundations of Dental Office Management” with Teresa Duncan in Moscone South 302 from 3-5 p.m. Learn how to structure an effective team, manage your practice for financial success and anticipate insurance issues and industry changes.



• Dr. John L. Alonge speaks on ‘Practical Oral Surgery for the General Practitioner’ Friday morning. (Photos/Sierra Rendon, *today* Staff)

Exclusively distributed by
HENRY SCHEIN[®]
DENTAL

CONFIDENCE LIES BENEATH THE SURFACE

Dental health is the cornerstone of your well-being. Introducing Planmeca **FIT**[™] - an open CAD/CAM system that is a **Fully Integrated Technology** for chairside dentistry. Restorations are individually crafted to fit your unique needs, ensuring superior strength and esthetics that stand the test of time.

To schedule a demonstration, contact your Henry Schein representative or call 800.645.6594 + press 1.



Made in the USA



www.planmecacadcam.com

PLANMECAFIT[™]
Open CAD/CAM System

today About the Publisher

Tribune America, LLC
116 W. 23rd St., Suite 500
New York, N.Y. 10011
Phone: (212) 244-7181
Fax: (212) 244-7185
E-mail: info@dental-tribune.com
www.dental-tribune.com

Publisher & Chairman
Torsten Oemus
t.oemus@dental-tribune.com

President/Chief Executive Officer
Eric Seid
e.seid@dental-tribune.com

Group Editor
Kristine Colker
k.colker@dental-tribune.com

Managing Editor
Fred Michmershuizen
f.michmershuizen@dental-tribune.com

Managing Editor
Sierra Rendon
s.rendon@dental-tribune.com

Managing Editor
Robert Selleck
r.selleck@dental-tribune.com

Product/Account Manager
Humberto Estrada
h.estrada@dental-tribune.com

Product/Account Manager
Maria Kaiser
m.kaiser@dental-tribune.com

Product/Account Manager
Will Kenyon
w.kenyon@dental-tribune.com

Business Development Manager
Travis Gittens
t.gittens@dental-tribune.com

Education Director
Christiane Ferret
c.ferret@dtstudyclub.com

Accounting Department
Nirmala Singh
n.singh@dental-tribune.com



Published by Tribune America
© 2015 Tribune America, LLC
All rights reserved.

today CDA Presents The Art and Science of Dentistry Show Dailies Vol. 7 appear during the CDA Presents meeting in San Francisco, California, August 20–22, 2015.

Tribune America makes every effort to report clinical information and manufacturers' product news accurately, but cannot assume responsibility for the validity of product claims, or for typographical errors. The publishers also do not assume responsibility for product names or claims, or statements made by advertisers.

Opinions expressed by authors are their own and may not reflect those of Tribune America or Dental Tribune International.

PRODUCT *from page 1*

parents a dashboard that allows them to track and reward children's brushing. To see Grush in action, stop by the booth, No. 2404.

- *Buffering simplified:* The Anutra Local Anesthetic Delivery System is a revolutionary way to buffer local anesthetics. Who wouldn't want to anesthetize a patient and be able to go to work in just two minutes?

Additionally, the Anutra Feedback Aspiration Syringe allows for multiple doses in a single syringe. With buffering, practitioners are more productive, efficient and profitable while providing more comfort to patients, according to Global Surgical Corp. To check Anutra out, stop by booth No. 815.

- *Secure core build-up:* Ketten-




• **Visit booth No. 2404 to ask Ethan Schur all about the Grush toothbrush that turns brushing into an interactive electronic game.**

bach's new Visalys Core is the first core build-up material with unique Active-Connect-Technology (ACT) for bonding reliably with all common light and dual-curing one step and multi step adhesives. Visalys Core also bonds to light-curing, single-stage adhesives without an additional activator. For more information, visit the booth, No. 1640.

- *Four shades whiter:* The Philips Zoom QuickPro is a new whitening varnish with breakthrough two-layer technology that allows hydrogen peroxide to be sealed against the teeth for 30 minutes with, on average, four shades of improvement.

The procedure takes minimal time in office and delivers a noticeably whiter smile for your patients on the go. Learn all about it at booth No. 1626.

AD



San Diego



Academy of Osseointegration

GLOBALIZATION of IMPLANT DENTISTRY: A World Collaboration

ANNUAL MEETING

February 18-20, 2016

San Diego Convention Center

ADA CERP® Continuing Education Reciprocity Program

Scenes from Friday



• Jim Srader of Great Lakes Orthodontics answers questions Friday at the booth, No. 1418.



• An attendee tries out the latest in dental microscopes at the Global Surgical booth, No. 815.



• Attendees wait for their turn at the brushing station at Crest Oral-B, booth No. 1202.



• Hyong Leung of Ivoclar Vivadent helps attendees Friday at the booth, No. 626.



• Kevin Person of Planmeca explains the benefits of the Sovereign Classic at booth No. 1926.



• If you need a new pair of loupes, stop by Designs for Vision, booth No. 1019, to sample some options.



• CDA attendees head from education courses into the exhibit hall Friday morning.



• Stop by Vatech to learn all about 'the world's first green CT' at booth No. 1340.



• Attendees line up to hear all about the latest innovations from Philips at booth No. 1626.

Photos by Sierra Rendon
todayStaff

Deliver Satisfaction with Simply Natural Digital Dentures™



Precision fit of the Simply Natural Digital Dentures CAD/CAM-printed baseplate increases stability during try-in, often reducing the number of appointments before delivery. The digital file is saved for five years.

\$225* per arch
including Kenson® teeth



Final Simply Natural
Digital Dentures



*Price does not include shipping or applicable taxes.
Kenson is a registered trademark of Myerson.

"I just received back my first Simply Natural Digital Dentures case. The patient loves the fit especially; it even improved her ability to speak."

Adam Myers, DDS
Morgantown, West Virginia

"The fit of the Simply Natural Digital Dentures was amazing. I was pleased with the use of this technique."

C. Aydin Cabi, DDS
Aurora, Ohio

"The fit was awesome! I love the use of this new technology."

Gregory Nicholson, DDS
Murfreesboro, Tennessee

"I love the awesome fit of the Simply Natural Digital Dentures!"

Bruce Wiley, DMD
Greybull, Wyoming

"This technique is great and resulted in the easiest try-in I have ever done."

Michael Brogna, DMD, FAGD
Bensalem, Pennsylvania

For more information

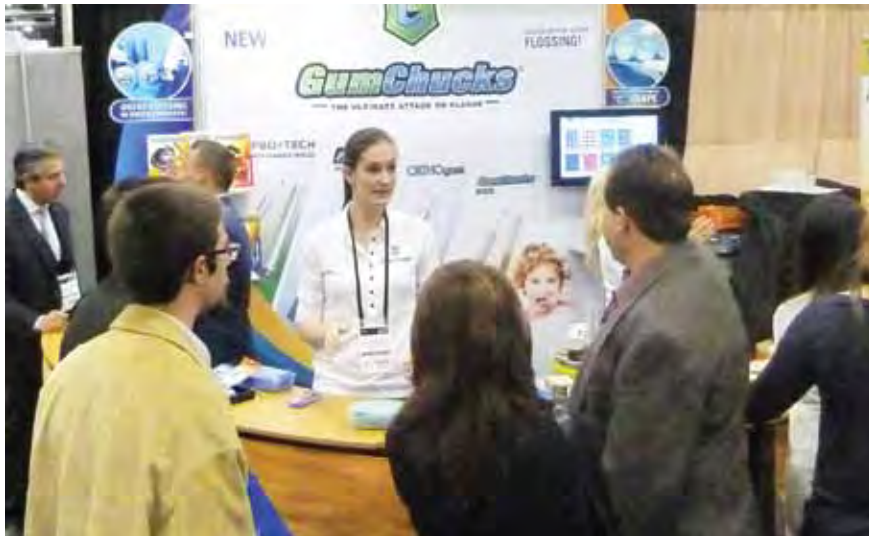
888-786-2177

www.glidewelldental.com



**GLIDEWELL
LABORATORIES**

Premium Products - Outstanding Value



• Brix Gatti, RDH, shows attendees the latest in dental flossing at GumChucks, booth No. 2425.



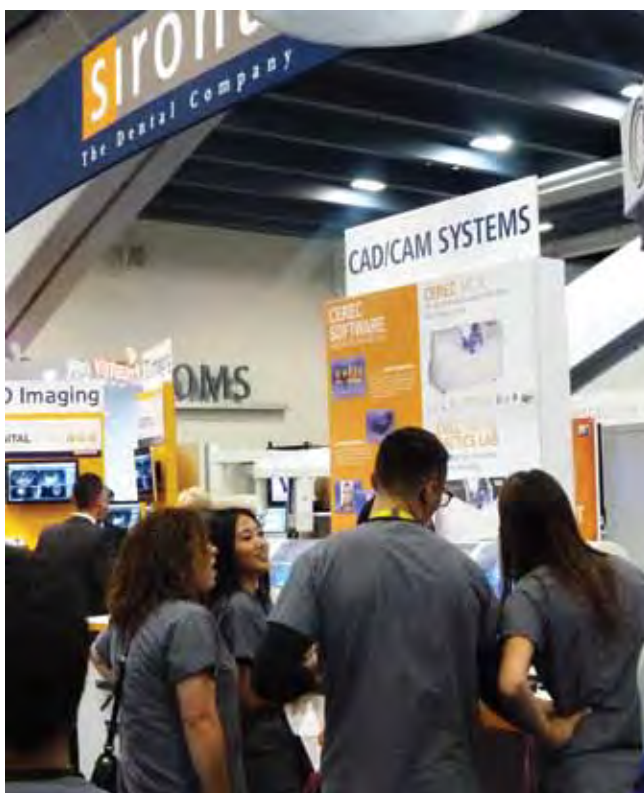
• Scott Headley hands out tickets for upcoming WaterPik presentations at booth No. 1718. Attendees who attend the presentation can receive a free WaterPik!



• Learn more about the University of the Pacific, Arthur A. Dugoni School of Dentistry, at booth No. 507.



• Dr. Tom Hirsch of Isolite helps an attendee place the isolation mouthpiece herself to see how easily and efficiently it works Friday at the company's booth, No. 2214.



• Carrington College dental students check out the latest in technology from Sirona at booth No. 1226.



• Take a break from cruising the exhibit hall with 'the ultimate' Infinity massage chair at booth No. 508.



• Take a spin of the prize wheel and find out how Reputation Impression, booth No. 717, can help your practice.

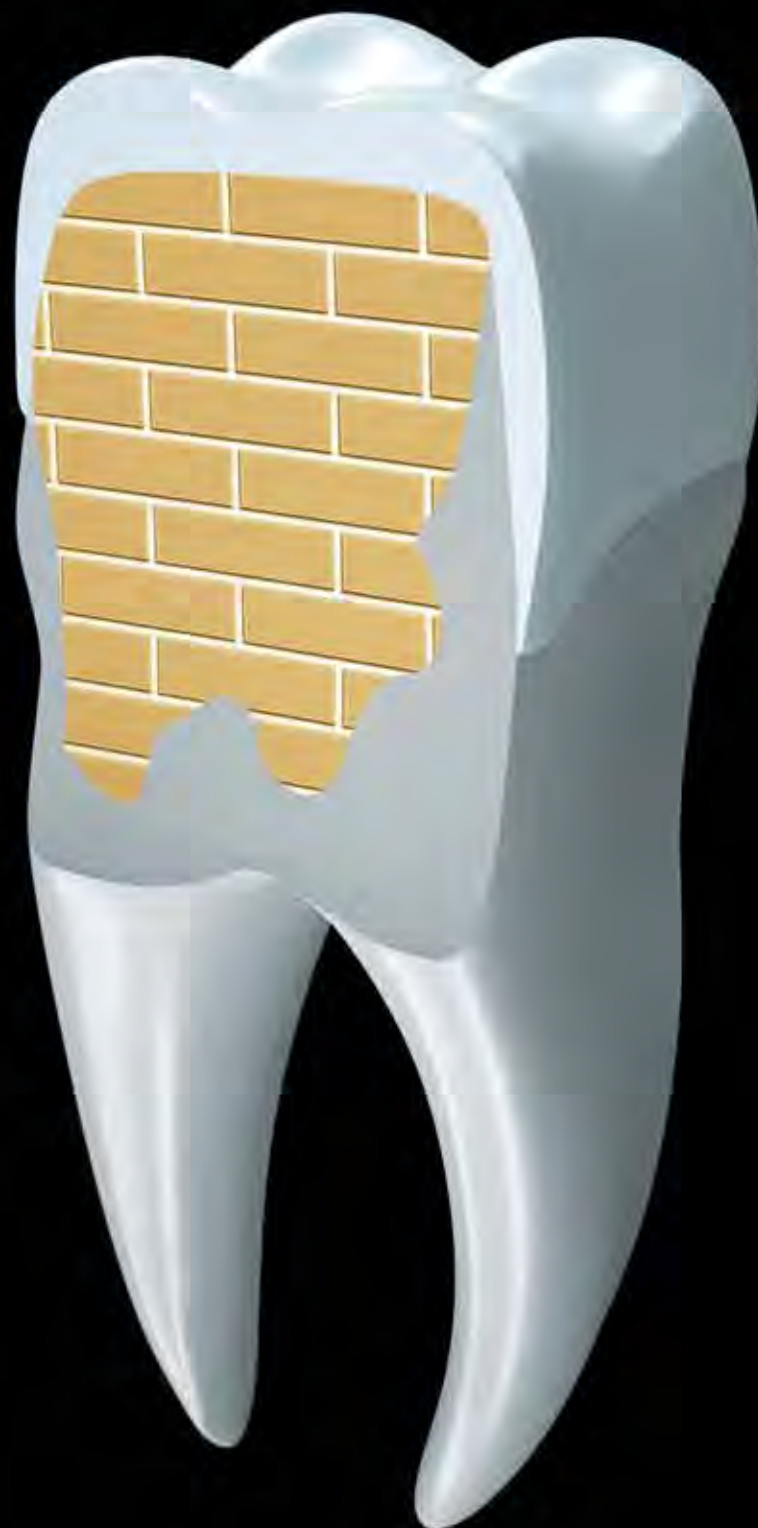


• Courtney Isett speaks on 'Connecting With Your Community: The Hidden Marketing Strategy' on Friday morning at The Spot.



• Veronica Marfori tells attendees all about show specials at the Glove World booth, No. 1936.

NEW! Visalys[®] Core – Secure core build-up for high stability.



Visalys[®] Core is a fluoride-containing, dual-curing composite, developed for the fabrication of radiopaque core build-ups and core fillings and for cementing root posts. The product incorporates Active-Connect-Technology (ACT), which is unique in the market. This enables the material to bond actively with common light-curing and dual-curing, single-step and multi-step adhesives, without an additional activator. The advantage for users is that it allows them to use the bonding agent they are used to – no matter whether it is a light-curing or dual-curing, a single- or multi-bottle system. Call 877-532-2123 direct to place an order.

www.kettenbachusa.com

Come see Kettenbach at
CDA San Francisco
▶ **Booth #1640**

Half-arch restoration offers new durable, esthetic option

By Glidewell Laboratories Staff

■ The BruxZir® Solid Zirconia Half-Arch Implant Prosthesis offers a fixed, all-zirconia implant solution for partially edentulous patients who desire a more durable replacement for removable partial dentures.

Constructed from 100 percent BruxZir Solid Zirconia and attaching to implants via titanium connections, this half-arch restoration can dramatically improve patient quality of life, according to the company. BruxZir Solid Zirconia offers superior fracture toughness and exhibits flexural

strengths of up to 1,465 MPa, making it an ideal material for enduring the functional stresses of the mouth.

Scanned, designed and milled with CAD/CAM technology, the BruxZir Half-Arch Implant Prosthesis can help clinicians achieve a predictable restorative result.

Here at the CDA

For more information, visit www.bruxzir.com or stop by the Glidewell Laboratories booth, No. 1428.

AD

"My personal journey at LVI taught me the most cutting edge techniques in dentistry. It taught me how important it is to work on my business and most of all to **love what I do** and provide my patients with life changing dentistry."

Dr. Conchi M. Sanchez-Garcia, Miami, FL



**LOVE WHAT YOU DO.
DO WHAT YOU LOVE.
LVI CAN SHOW YOU HOW.**

888.584.3237 | LVI Global.com | concierge@lviglobal.com



Changing Dentistry. Changing Lives.

ADA CERP



See report published in the American Dental Journal, J.D. Miller, D.D., an ADA Recognized Provider, ADA CERP is a member of the American Dental Association to assist dental practitioners in their ongoing quality assurance of continuing dental education. ADA CERP does not approve or endorse individual courses or instructors, nor does it guarantee the quality of any course. Courses or instructors should be approved by the provider or by ADA CERP at www.ada.org/gdte.



Academy of General Dentistry Approved NACE Program Provider 152374602001. Approval does not imply endorsement by a state or national board of dentistry or ADA endorsement. © 2015 LVI Global, Inc.

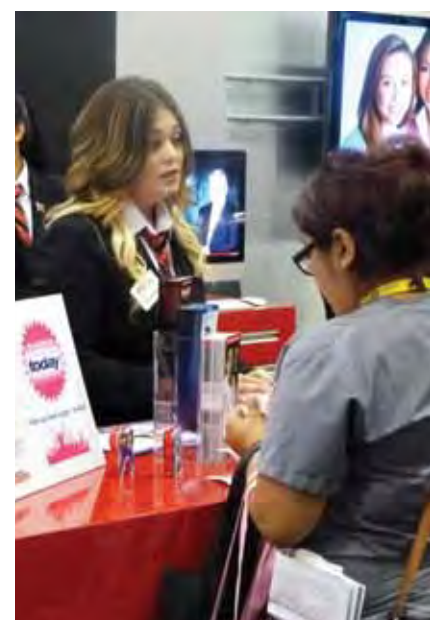
Half-arch prostheses are milled from esthetic BruxZir Shaded milling blanks, which, when processed, create restorations that exhibit vital translucency and color similar to natural dentition. The esthetics of the material are then enhanced with staining and glazing techniques.

Strong, hygienic and affordably priced, according to the company, the BruxZir Half-Arch Implant Prosthesis offers resistance to the chips, fractures and stains that can compromise acrylic prostheses.

What's more, the BruxZir Half-Arch Implant Prosthesis is backed by a seven-year free replacement warranty. If material damage occurs on the device, a new prosthesis will be milled and finished from the stored digital data.

Available for half-arch indications for the first time, BruxZir Solid Zirconia is hypoallergenic and has been shown in clinical studies to be wear-compatible with enamel.

The BruxZir Solid Zirconia Half-Arch Implant Prosthesis is priced at \$1,795 and includes the final prosthesis, a provisional CAD/CAM implant prosthesis made out of poly(methyl methacrylate) (PMMA), all labor, model and die work, analogs, setups, bite blocks, try-ins and verification jigs.



• Teresa Salido of Glidewell Laboratories helps an attendee at the booth, No. 1428. (Photo/Sierra Rendon, today Staff)

A **STRONGER,**
more adaptable
and easier to use
core composite.



Dr. Gregg A. Helvey, DDS, MAGD, CDT



- No BPA used in manufacturing
- Cuts like dentin
- Radiopaque—200% of Aluminum
- Available in two shades:
Tooth Shade A2/B2 & Absolute White
- Dual cure
- Low viscosity
- Automix
- No dispensing gun needed



Absolute Dentin Plus™ features nanotechnology, giving it a slightly lower viscosity than original 'AD'. It's even easier to syringe the material into a small diameter canal when cementing a post. Don't be mistaken, Absolute Dentin Plus still stacks, still cuts like dentin and still works great with Brush&Bond®.

- Absolute Dentin™ Plus.....\$41.50/kit
Kit consists of one 5ml dual-chamber syringe, 8 mixing tips and 8 intraoral tips (4 root canal & 4 white). **Shades:** Absolute White (S330), Tooth Shade A2/B2 (S331).



I love using Absolute Dentin™ for my cores. However, Absolute Dentin™ PLUS' lower viscosity allows the material to flow and adapt better in small areas on the tooth. It's also perfect for flowing into tight post holes when a post is required."

— Gregg A. Helvey, DDS, MAGD, CDT

**45 Day
Risk-Free Trial**

when you order
direct from Parkell.*

1-800-243-7446

— or —

parkell.com



Learn more at the
Parkell Booth #2301



Solutions for the Problem-Solving
Dental Professional Since 1948.

1-800-243-7446 • www.parkell.com