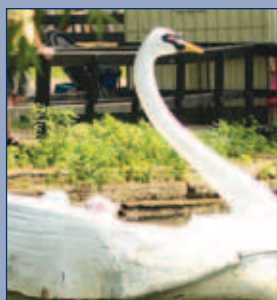


today



Explore Toronto

Electric-powered swan boats, GPS-guided tree tours, miles of paths — and no cars — provide nearby respite from energetic downtown.

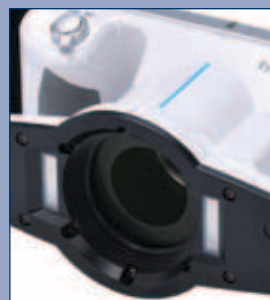
»page 2



More dentists going electric

High-tech is making electric handpieces an increasingly popular choice among dentists across North America.

»page 6



Smart camera designed exclusively for dentistry

Among the many high-tech advancements in the ADM exhibit hall, be sure to check out the EyeSpecial C-II.

»page 8



• In Toronto today at the Metro Toronto Convention Centre South Building, home of the Ontario Dental Association Annual Spring Meeting, are some of the industry's top innovators and imaginative thinkers — not just in the classrooms, but in the exhibit hall as well. (Photo/©iStock.com/Veni)

Connecting point

ASM exhibit hall filled with opportunity to connect with some of dentistry's most creative minds

■ It's not just via the lectures, courses and workshops at the 2015 Annual Spring Meeting that you can learn from some of dentistry's top minds. The Ontario Dental Association's annual meeting also presents the opportunity to meet one-on-one with some of the industry's most creative problem solvers — in the exhibit hall booths.

More than 300 exhibiting companies are here in Toronto at this 148th edition of the ASM. And the only reason those companies are here is to enable dental professionals to meet with key representatives face-to-face to see first-

hand how the latest advancements in dental products and services can improve patient experiences and results — and support dental-practice success.

The ASM exhibit hall enables you to touch, test-drive and compare the newest materials and technology in dentistry. And perhaps best of all, there is opportunity to meet directly with the people who best understand how the new materials and technology can most effectively be put to use.

Among the highlights: DENTSPLY Canada is here in booth No. 1503 with

a number of new products, including Nupro® Varnish, TPH Spectra and Prime & Bond® Elect. And, of course, you can learn more about its many other long-proven products. Also prominently featured is the new high-tech electric handpiece system, the Midwest E, powered by one of the market's smallest and lightest electric motors.

In booth No. 130, you can find Implant Direct, one of the industry's fastest-growing major dental implant companies. The company has earned a strong reputation for innovative prod-

ucts and fair pricing, with one of the top examples being all-in-one packaging that includes implant, coverscrew, healing collar and carrier/transfer. You can tell such thinking comes straight from dental professionals placing implants, because the packaging concept doesn't just make things more efficient chair-side, it also makes it easier to track actual, total treatment costs.

Another fast-growing operation is National Dental Inc., in booth No. 1028. The company's unique blend of prod-

»see **CONNECTING**, page 2

Exploring Toronto

■ Toronto's list of attractions is enticing: international cuisine, unique shopping venues, diverse cultural facilities and events, trails, parks, distinctive architecture and endless top-caliber entertainment.

Here is a nearby possibility, especially if the kids are with you.

Just getting to the Toronto Islands is enough of an adventure on its own, with a 10-minute ferry ride required as the first leg of the excursion. You catch the ferry at the Toronto Ferry Docks west of the Westin Harbour Castle Hotel at 9 Queens Quay W, between Yonge and Bay streets. Ferries travel to each of the three main islands, which are connected by bridges.

Many of the other smaller islands are accessible only by boat. There are plenty of ways to spend money on the main island, Centreville, including: a children's amusement park, children's garden, cafes, food vendors, canoe rentals and weekend bike rentals.

The islands are home to a community of about 800 people, who have the

*see TORONTO, page 10



• Electric-powered swan boats are among the family-friendly attractions at Centreville Amusement Park on Toronto Islands. Other rides include a 1907 antique carousel, a windmill-style ferris wheel, the Saugreen Lumber Mill log flume ride, Aunt Hilde's twirling teacups, bumper boats and the Centreville Train. (Photo/Doug Brown, www.torontowide.com)

CONNECTING *from page 1

ucts and services always generates steady traffic. Among the offerings are the LightWalker Dual Wavelength Laser system (the only dental laser capable of delivering both ND:YAG and ER:YAG laser energy); the DocPort IO fog-free intraoral camera; the Ever-Clear mirror (doesn't need to be cleared of spray and debris during procedures); and the Carl Zeiss Cinemizer 3D Video Glasses (even if you're not yet ready to get them for your patients, you'll want to check them out for yourself).

Patterson Dental Canada is here, in booth No. 802/803, with its usual full representation of equipment and supplies to support every aspect of your practice.

Another industry leader in innovation is Septodont, in booth No. 1124. The company has a broad selection of products that reflect its more than 85 years of experience developing and manufacturing tools and materials for dental professionals. Its highly trained representatives are here to answer all of your questions about its anesthetics and pain-control products as well as adhesives, composites and restoratives.

Whether you're just wandering around or on a mission to link together your must-visit booths, the 75,000 square feet of exhibit hall space has more to offer than you'll ever be able to take advantage of. Today is your final opportunity, though, at least for the 2015 ASM, with the exhibit hall open from 9 a.m. to 5:30 p.m.



• More than 300 exhibiting companies are here at the Metro Toronto Convention Centre South Building for the 148th annual edition of the Ontario Dental Association Annual Spring Meeting. (Photo/Provided by Metro Toronto Convention Centre)

today

About
the Publisher

Tribune America, LLC
Phone: (212) 244-7181
Fax: (212) 244-7185
E-mail: info@dental-tribune.com
www.dental-tribune.com

Publisher & Chairman
Torsten Oemus
t.oemus@dental-tribune.com

President/Chief Operating Officer
Eric Seid
e.seid@dental-tribune.com

Group Editor
Kristine Colker
k.colker@dental-tribune.com

Managing Editor/Designer
Robert Selleck
r.selleck@dental-tribune.com

Editor/Designer
Sierra Rendon
s.rendon@dental-tribune.com

Online Editor
Fred Michmershuizen
f.michmershuizen@dental-tribune.com

Product/Account Manager Canada
Will Kenyon
w.kenyon@dental-tribune.com

Product/Account Manager
Humberto Estrada
h.estrada@dental-tribune.com

Product/Account Manager
Maria Kaiser
m.kaiser@dental-tribune.com

Marketing Director
Anna Kataoka
a.kataoka@dental-tribune.com

Accounting Assistant
Nirmala Singh
n.singh@dental-tribune.com

Education Director
Christiane Ferret
c.ferret@dtstudyclub.com

Published by Tribune America
© 2015 Tribune America, LLC
All rights reserved.

today appears during the Ontario Dental Association Annual Spring Meeting in Toronto, Ontario, Canada, May 7 and 8, 2015.

dti Dental
Tribune
International

Tribune America makes every effort to report clinical information and manufacturers' product news accurately, but cannot assume responsibility for the validity of product claims, or for typographical errors.

The publishers also do not assume responsibility for product names or claims, or statements made by advertisers. Opinions expressed by authors are their own and may not reflect those of Tribune America or Tribune Group International.



DENTSPLY BOOTH #1503
LOOK FOR YOUR DIAC
COUPON BALLOT
(IN YOUR DELEGATE BAG) FOR A
CHANCE TO WIN
AN APPLE SPORT WATCH!



Combine Forces for a Complete Solution.

Every one of DENTSPLY Class II restorative products is designed by dentists for dentists to give you the perfect instrument for predictable results. Use them together and you'll discover the only complete Class II restorative solution available that puts complete control of every Class II step in your hands.

SCAN THE QR CODE TO VIEW DR. CONTE'S CLASS II WEBINAR



PalodentPlus
Sectional Matrix System

Prime-Bond elect
Universal Dental Adhesive

SureFil SDR
flow
POSTERIOR BULK FILL FLOWABLE BASE

TPH SPECTRA
UNIVERSAL COMPOSITE RESTORATIVE

SmartLite
FOCUS

enhance
FINISHING SYSTEM



Use them together and discover an elite level of dental care | The complete CLASS II TOTAL PRACTICE SOLUTION | www.class2restorations.ca

NEW!



www.dentsplymidwest.ca

MIDWEST E
Electric Handpiece System

Introducing the Midwest E Electric Handpiece System, for dentists who want power and flexibility to match their skill and finesse.

- Lightweight, autoclavable motor weighs only 59 g
- Intuitive, LED touch-screen user interface
- Well-balanced attachments available in high-speed, low-speed endodontic and straight configuration
- Three torque-stop options available in endo mode
- Detachable faceplate to fit all delivery units

**TRY IT FOR YOURSELF AT OUR
BOOTH #1503 AND RECEIVE A FREE GIFT!**

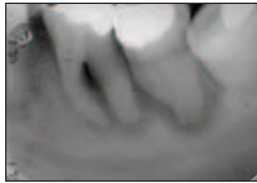
Actual prize may not be exactly as shown. DENTSPLY Canada reserves the right to change, cancel or alter these promotions at any time. Orders must be placed at the ODA2015 DENTSPLY Canada booth during show hours. © 2015 DENTSPLY Canada. Limit one ballot entry per customer.

PIPS technique used in endodontics treatment

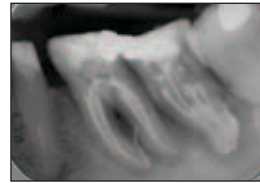
(Photos/Provided by Dr. Giovanni Olivi)

Here in Toronto

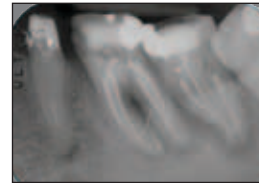
You can learn more about Photon Induced Photoacoustic Streaming and the Lightwalker AT laser device at the National Dental Inc. booth (No. 1028) in the exhibit hall.



• Fig. 1: Pre-op, before the PIPS treatment.



• Fig. 2: Post-op, after PIPS treatment



• Fig. 3: One month post-op



• Fig. 4: Four months post-op

By Prof. Giovanni Olivi, MD, DDS
University of Genoa, Italy

■ A patient asked for the option to save her teeth that were scheduled for extraction by another dentist. The lower-left first and second molars had

high mobility (grade 2), were necrotic, with significant probing depths in the buccal aspect. The teeth were diagnosed for endo-perio treatment.

Difficulties with this case included complex radicular anatomy, long anatomical measurements (26 and 27 mm, respectively, for #36 and 37) and the

presence of a deep vertical bone loss in the buccal aspect. After scaling and root planning, the teeth were scheduled for root-canal therapy.

Before each treatment, the Photon Induced Photoacoustic Streaming (PIPS™) technique was applied into the periodontal pockets of each tooth for refining the debridement, removal of biofilm from the root surfaces and pocket disinfection. The root-canal treatments were performed using PIPS-specific irrigation protocols with 5 percent NaOCl and 17 percent EDTA.

The canals were obturated with a flowable resin sealer (Endoreze, Ultradent, South Jordan, Utah) and gutta-percha points. A final treatment of the pockets using PIPS for disinfection was performed after completing each root canal therapy to remove any extruded sealer or residual biofilm. No post-op symptoms were reported and the mobility of the teeth progressively disappeared up to grade 0. The follow-up X-rays performed after one and four months showed healing in progress for both the teeth.

Lightwalker AT laser device with contact H14-C handpiece and PIPS fiber tip was used for the treatment.

Lightwalker parameters:

- Laser source: Er:YAG;
- Wavelength: 2940 nm;
- Pulse duration: SSP;
- Energy: 15 mJ;
- Frequency: 15 Hz.

Disclosure: Dr. Olivi has relationships with several laser companies (including AMD-DENTSPLY, Biolase and Fotona) but receives no financial compensation for his research or for writing articles.

About the author

Dr. Giovanni Olivi is an adjunct professor of endodontics at the University of Genoa School of Dentistry and a board member and professor in its master course in laser dentistry. He completed the postgraduate laser course at the University of Firenze and received laser certification from the International Society for Lasers in Dentistry. He earned advanced proficiency master-ship from the Academy of Laser Dentistry and is the 2007 recipient of ALD's Leon Goldman Award for Clinical Excellence. He has a private practice in endodontics, restorative and pediatric dentistry in Rome. He can be contacted at olivilaser@gmail.com.



AD

MONTRÉAL, Canada
2015
22 au 26 mai
Palais des congrès de Montréal

Journées dentaires
internationales
du Québec

LE PLUS IMPORTANT
CONGRÈS DENTAIRE
BILINGUE AU CANADA

45^e CONGRÈS ANNUEL
DE L'ORDRE DES DENTISTES DU QUÉBEC
www.odq.qc.ca

Ordre des dentistes
du Québec

LE DENTISTE
LE DOCTEUR QUI VEILLE
SUR VOTRE BOUCHE

Discover the truth in our vial



All-in-1 Packaging

Includes implant, cover screw, healing collar & carrier/transfer
– **\$150 SBM**

\$435 TRUE SAVINGS
for Straumann Customers
we dare to compare

All-in-1 Packaging

Includes implant, cover screw, healing collar & new fixture-mount that provides simply accurate impression taking as well as functions as a preparable final abutment
– **\$225 SBM, \$250 HA surface**

\$421 TRUE SAVINGS
for Zimmer Customers
we dare to compare

All-in-1 Packaging

Includes implant, cover screw, healing collar & new fixture-mount that provides simply accurate impression taking as well as functions as a preparable final abutment
– **\$225 SBM**

\$596 TRUE SAVINGS
for NobelBiocore Customers
we dare to compare

We're Direct. Direct to all dentists. Direct about how we do business so you can focus on treating patients.

Our implant expertise and state-of-the art manufacturing technology combine to create compatible solutions with enhanced features that are made to exacting tolerances. The efficiency of our processes means we can maintain consistent, fair prices free from negotiation.

We even went one step further by creating All-in-1 Packaging to help you curtail chairside surprises and track your true treatment costs.

And of course, our leading customer support is readily available online, on the phone or in your office to assist you in any way possible.

Sound too good to be true? Well, the truth is in our vial.

Set the truth free with your 3 FREE implants today

Ontario Dental Association #611

www.implantdirect.com | 888-649-6425



New high-tech electric handpiece delivers ease, power and control

(Photo/
Provided by
DENTSPLY
Canada)



Here in Toronto

Test out the Midwest E Electric Handpiece in the DENTSPLY Canada booth (No. 1503) in the exhibit hall and receive a free gift compliments of DENTSPLY Canada.

By DENTSPLY Canada Staff

Recent advancements in technology have made electric handpieces an increasingly popular choice among dentists across North America. Compared with traditional air-turbine instruments, electric handpieces pro-

vide the dentists with several benefits, including constant power and torque and adjustable bur speeds for a broad range of applications.

The Midwest E Electric Handpiece System is the latest electric handpiece system available on the market and includes the powerful Midwest E motor, which weighs only 59 grams and measures 1.25 inches — one of the smallest and lightest electric motors offered today. It is designed to deliver constant torque for smooth, quiet operation. It won't stall under load, which can help shorten chairtime and procedural efficiency. Autoclavable for easy infection control, the Midwest E motor features an "E" type attachment and spins up to 40,000 RPM.

At the heart of the system is an intuitive LCD touch-screen interface that lets users fine tune the speed, light and rotation to optimize performance for a variety of dental procedures — from caries removal to finishing and contouring to root canals. The faceplate is detachable for easy integration into delivery units.

Compact and lightweight to facilitate control and maneuvering, the Midwest E attachments are offered in high-speed, low-speed, endodontic and straight configurations. Color-coded for easy identification, the compact contra-angle attachments have a textured finish and ridges designed for an enhanced grip. All attachments feature high-quality components and are crafted from stainless steel to provide years of reliable service.

The Midwest E system also offers a field-replaceable hose, which helps avoid clinical delays due to service calls. Its stainless-steel connector is compatible with most dental units and the ergonomic 360-degree swivel feature increases operator comfort.

Whether it's operating in the high-speed, low-speed or endo settings, the Midwest E cuts quickly and efficiently. A quick-disconnect feature makes it easy to change attachments.

In endo mode, three torque-stop options are available, so it is an important feature for offices that perform endo procedures regularly — or for practices that plan to in the future.

The Midwest E comes with a three-year warranty on the system and a two-year warranty on attachments (extended to 30 months when attachments are maintained with the Midwest Automate Maintenance Unit).

Come and try the new Midwest E Electric Handpiece in booth No. 1503 in the Exhibit Hall and receive a free gift compliments of DENTSPLY Canada.

DENTSPLY Canada, based in Woodbridge, Ontario, can be contacted at (800) 263-1437, or you can visit the company online at www.dentsply.ca.

AD

AGD 2015 SAN FRANCISCO
a golden opportunity

June 18 to 21, 2015 Moscone West Convention Center www.agd2015.org



You're invited to:

- Experience cutting-edge continuing dental education
- Witness the latest in innovative technologies and treatment techniques
- Network with like-minded peers

Bring your entire dental team to San Francisco to get the most out of this experience for your practice!

With new enhancements and program offerings, AGD 2015 is one event you will not want to miss.

Register Today at
www.agd2015.org!





**STOP BY THE SEPTODONT BOOTH
#1124 FOR EXCLUSIVE DEMOS,
SHOW-ONLY OFFERS AND MORE!**

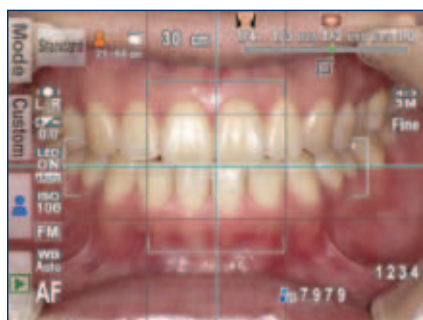
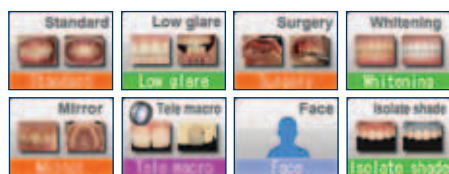


Available now in Canada from Septodont

Adults and Pediatrics (6 to 18 years of age): OraVerse (phentolamine mesylate) is indicated for reversal of soft-tissue anesthesia resulting from an intraoral submucosal injection of a local anesthetic containing a vasoconstrictor, following a non-invasive routine dental procedure. OraVerse is not recommended for use in children less than 6 years of age or weighing less than 15 kg (33 lbs).

Please consult the Product Monograph at: <http://www.hc-sc.gc.ca/dhp-mps/prodpharma/databasdon/index-eng.php>. for contraindications, warnings, precautions, adverse reactions, interactions, dosing, and conditions of clinical use. The Product Monograph is also available upon request: call 1-800-872-8305





• EyeSpecial C-II has eight shooting modes formatted specifically for quick, easy chairside use by any dental specialist. (Photos/Provided by Shofu Dental Corp.)

Smart camera designed exclusively for dentistry

EyeSpecial C-II from Shofu Dental Corp.

Here in Toronto

Visit Shofu Dental Corp. in booth No. 1902 to test out the EyeSpecial C-II.

■ The 12-megapixel EyeSpecial C-II digital dental camera, designed exclusively for dentistry, has eight shooting modes that are described by the company as being easier, faster and more reproducible to produce high-quality



• The EyeSpecial C-II has exceptional depth-of-field, fast autofocus and anti-shake — as well as infrared, UV and antireflection filters.

images. The EyeSpecial C-II offers a high performance 49-mm close-up lens, intuitive one-touch operations, an ultra-lightweight body design and a large LCD touchscreen that enables the user to view and scroll through images effortlessly, even with a gloved hand.

Designed to produce high-quality images, EyeSpecial C-II has exceptional depth-of-field range, fast autofocus and anti-shake capabilities — as well as infrared, UV and anti-reflection filters, according to the company. It is scratch- and scuff-resistant as well as water- and chemical-resistant, which are all essential for infection control in the operatory.

Easy to hold with one hand

Ideal for dental/orthodontic photography, case presentations and at the bench in a laboratory, according to the company, the EyeSpecial C-II is extremely user friendly and can be held comfortably with one hand, freeing the other to manipulate a cheek retractor or mirror. Included with the EyeSpecial C-II is a 4-GB SDHC card, but the camera is also compatible with a wireless SD card, such as an Eye-Fi card, enabling images to be automatically transferred and uploaded onto a computer, tablet or smartphone.

The EyeSpecial C-II comes with the 4-GB SDHC card, four AA batteries, a high-performance Kenko 49-mm macro lens for close-up shots, computer connection cord and hand strap, flash calibration card, Shofu stylus and cleaning cloth as well as SureFile photo management software, which is available as a free download. This proprietary software enables the user to automatically sort and file images by patient name or ID number to save time.

Shofu's smart EyeSpecial C-II is designed exclusively for dentistry and adds consistency and efficiency to all your dental photography needs, according to the company.

For more information or educational videos, visit www.shofu.com or contact Shofu Dental Corp. at (800) 827-4638.

(Source: Shofu Dental Corp.)

AD

Academy of Osseointegration

San Diego

GLOBALIZATION
of
IMPLANT DENTISTRY:
A World Collaboration

ANNUAL MEETING

February 18-20, 2016

San Diego Convention Center

ADA CERP® Continuing Education Recognition Program

ENDO

MADE

EASY

Foramatron™ APEX LOCATOR

- Precisely pinpoints the apical constriction using high and low frequency bands.
- Ergonomic, aseptic design.
- LED illuminated display for easy viewing.
- Four distinct audio signals reinforce the indicator lights.
- Reliable results even in the presence of all types of fluids.
- Uses a replaceable, inexpensive 9-Volt battery.
- Includes detachable autoclavable cables.
- 5-year power-unit warranty.**

■ Foramatron® Apex Locator (D645) CAN \$740.00
Includes Reamer Holder, Cables, Touch Probe,
2 Lip Grounds, Test Plug and 9V Battery.



Digitest II™ PULP VITALITY TESTER

- Includes 4 removable, autoclavable probes; (1) Short, (2) Long, (3) Precision Labial & (4) Precision Lingual
- A simple push-button activation for gradual stimulus increase, improving patient comfort.
- Large digital display indicates intensity.
- Three rates of stimulus: slow, medium & fast.
- Uses a standard 9V alkaline battery that's easy to replace in the office.



■ Digitest II™ Pulp Vitality Tester (D640) CAN \$430.00
Includes 4 autoclavable probe tips (1-standard long, 1-standard short,
1-labial and 1-lingual), ground wire & clip, 9-volt battery and a durable case.

Order direct for a 90-DAY RISK-FREE TRIAL!*
1-800-243-7446 • www.parkell.com



*If you're not satisfied, call us within 90 days. We'll have it picked up at our expense, and give you a full refund—including your original ground shipping charges (Express shipping will not be reimbursed). Trial offer valid only when product is purchased directly from Parkell, Inc.
**The 5 year warranty covers everything except the batteries and cables. 0515 | 00ADAILY

parkell
inc.

Solutions for the problem-solving
dental professional since 1948.