

# today



### Plan today to start tomorrow inspired

*Friday:* Since age 12, Ontario native Craig Kielburger has used daily action to tackle global problems.

»page 2



### Leading hybrid injectable now in tips

Check out the injectable hybrid restorative now also in tips: BEAUTIFIL Flow Plus from Shofu Dental Corp.

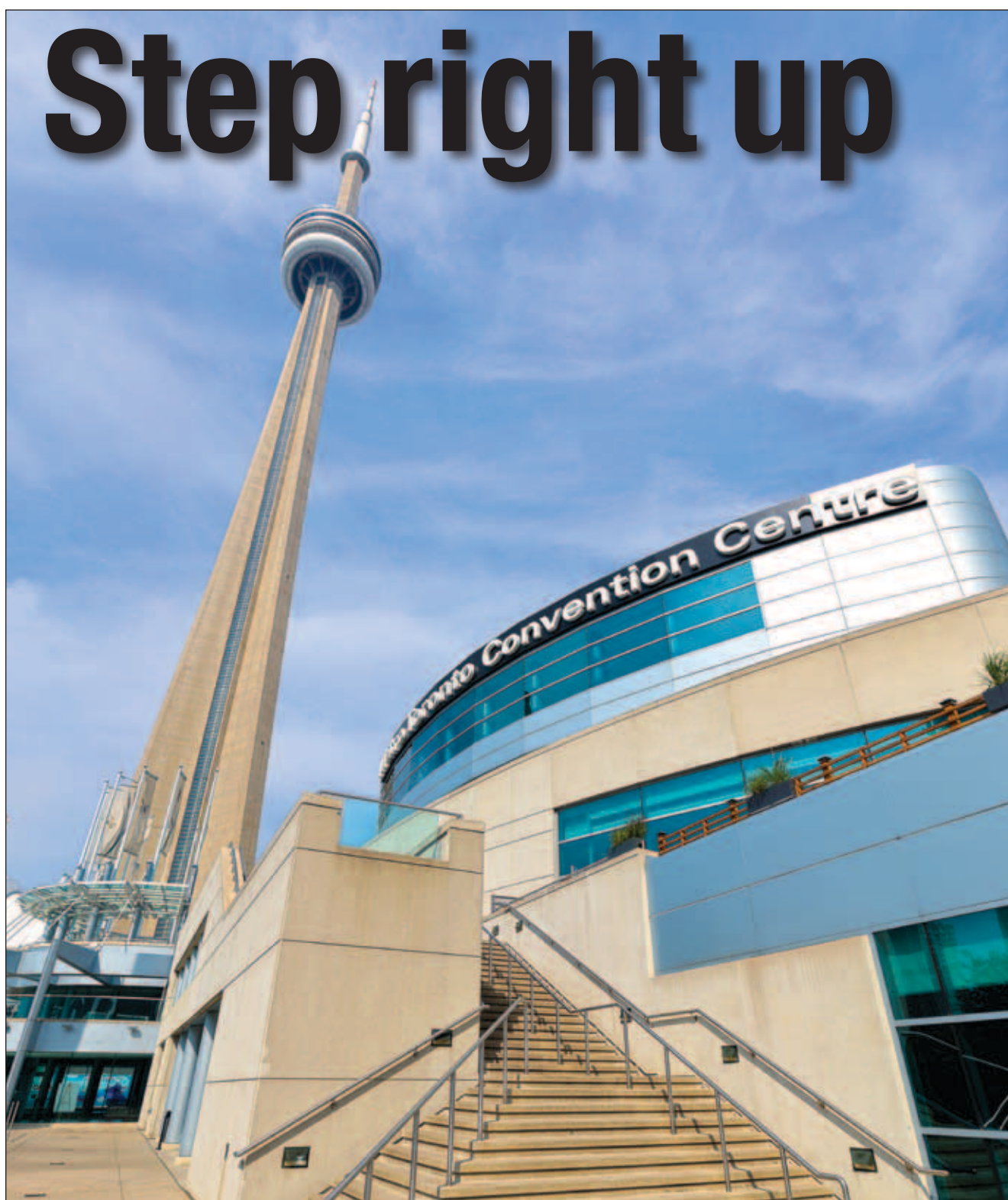
»page 8



### RCDC celebrating its centennial in 2015

Now in its 100th year, the Royal Canadian Dental Corps is represented at the 2015 ASM with an exhibit hall booth.

»page 12



# Step right up

## 2015 ASM invites you to 'Connect. Learn. Excel.'

■ For more than 14 decades the Ontario Dental Association has focused on three core concepts to guide the focus of its Annual Spring Meeting: "Connect. Learn. Excel."

Reflecting those concepts, these next three days in Toronto, May 7-9, feature an agenda of wide-ranging and topical presentations in a variety of formats presented by nationally and internationally renowned speakers. The lectures, hands-on workshops and other interactive sessions are designed to deliver high-value knowledge – and C.E. credit.

And just as enticing, this 148th annual edition of the meeting also features an exhibit floor covering more than 75,000 square feet within the Metro Toronto Convention Centre, South Building.

The exhibit hall features more than 300 exhibiting companies demonstrating for and teaching attendees about new products, services and technology from across the globe.

In the exhibit hall today you have the opportunity to touch, test and compare the newest materials and technology in the dental industry.

There is plenty of fun on the agenda, too, as confirmed by today's opening keynote speaker, Ron James, described as one of Canada's top comedians. Delivering the opening keynote tomorrow will be Craig Kielburger, the social entrepreneur, New York Times best-selling author and globally syndicated columnist.

Even the exhibit hall floor is



# Start your Friday inspired

Since age 12, Ontario native has used daily action to tackle global problems

Friday morning's general session keynote speaker, Craig Kielburger, is a social entrepreneur, New York Times best-selling author and popular speaker known for his ability to inspire people to improve their communities and points beyond through their daily actions.

With his brother Marc, Kielburger founded one of the world's leading platforms for social change, comprising three core initiatives: the international charity Free The Children; an innovative social enterprise Me to We; and the youth-empowerment event We Day.

Kielburger's start as a child rights activist began at age 12, when he reached for the morning comics and noticed the newspaper's front page. The headline read, "Battled Child Labor, Boy, 12, Murdered." Being 12 himself, Kielburger felt an immediate connection and took the story with him to school. When he asked his class for help to tackle the issue of child labor, 11 students raised their hands. Free The Children was born.

What began as a group of a dozen kids has grown into an international charity. Free The Children programs have helped more than 1 million beneficiaries. To date, Free The Children has built more than 650 schools and school rooms in developing countries, providing education to more than 55,000 children every day. Inspired by Kielburger's life mission, Oprah's Angel Network partnered with Free The Children to fund 68 schools.

Through Me to We, the Kielburger brothers are advancing a vision of philanthropy that connects business to a social purpose. Every year, Me to

## Here in Toronto

Friday's keynote presentation is from 8-9 a.m. in Hall F&G of the MTCC South Building.

We reaches hundreds of thousands of socially-conscious consumers. It provides full-time employment to more than 1,000 women artisans in Kenya, and has created a global market for their work through partnerships with leading retailers, including Nordstrom, Virgin and PacSun. Half of Me to We's annual net profit is donated to Free The Children, while the other half is reinvested to grow the enterprise and its social mission.

The series of stadium-sized We Day events connect with 200,000 students from 5,000 schools every year. The students earn entry to the celebration through service programs. Speakers and performers have included Prince Harry, Richard Branson and Jennifer Hudson. With more than 5 million followers on Facebook, We Day has become one of the largest charitable causes in the world.

The brothers have written 12 books, including the New York Times best-



**Craig Kielburger's human-rights work has earned him 15 honorary degrees, the Order of Canada, the Roosevelt Freedom From Fear Medal, the World Children's Prize for the Rights of the Child and the Muhammad Ali Humanitarian Award. (Photo/Provided by [www.freethechildren.com](http://www.freethechildren.com))**

seller "Me to We: Finding Meaning in a Material World." Their weekly columns are syndicated in more than 30 newspapers across North America. Kielburger is the youngest-ever graduate from the Kellogg-Schulich Executive MBA program.

(Source: [www.freethechildren.com](http://www.freethechildren.com))

## CONNECT "from page 1"

designed to offer some breaks from dental overload, with its Health Check Zone (to make sure you're taking care of yourself) and the Relaxation Zone (to help you take care of yourself). The exhibit hall also has two cocktail receptions scheduled.

## Explore Toronto

The meeting presents a great opportunity to explore one of Canada's most popular cities during one of the most appealing times of the year: Toronto in spring. The trees are leafing out, the cafes are inviting, a variety of shows are in town and the galleries and shopping provide endless opportunity for exploration.

Meeting organizers expect approximately 11,700 dental professionals to be in attendance during the three-day meeting. The exhibit hall is open today and tomorrow (Thursday and Friday, May 8-9) from 9 a.m.-5:30 p.m.

(Source: [Ontario Dental Association](http://OntarioDentalAssociation.com))



**The Metro Toronto Convention Centre South Building's ceremonial entrance features Canadian indigenous sculptures, murals, terrazzo flooring and other unique artwork. (Photo/Provided by Metro Toronto Convention Centre)**

**today** About  
the Publisher

Tribune America, LLC  
Phone: (212) 244-7181  
Fax: (212) 244-7185  
E-mail: [info@dental-tribune.com](mailto:info@dental-tribune.com)  
[www.dental-tribune.com](http://www.dental-tribune.com)

**Publisher & Chairman**  
Torsten Oemus  
[t.oemus@dental-tribune.com](mailto:t.oemus@dental-tribune.com)

**President/Chief Operating Officer**  
Eric Seid  
[e.seid@dental-tribune.com](mailto:e.seid@dental-tribune.com)

**Group Editor**  
Kristine Colker  
[k.colker@dental-tribune.com](mailto:k.colker@dental-tribune.com)

**Managing Editor/Designer**  
Robert Selleck  
[r.selleck@dental-tribune.com](mailto:r.selleck@dental-tribune.com)

**Editor/Designer**  
Sierra Rendon  
[s.rendon@dental-tribune.com](mailto:s.rendon@dental-tribune.com)

**Online Editor**  
Fred Michmershuizen  
[f.michmershuizen@dental-tribune.com](mailto:f.michmershuizen@dental-tribune.com)

**Product/Account Manager Canada**  
Will Kenyon  
[w.kenyon@dental-tribune.com](mailto:w.kenyon@dental-tribune.com)

**Product/Account Manager**  
Humberto Estrada  
[h.estrada@dental-tribune.com](mailto:h.estrada@dental-tribune.com)

**Product/Account Manager**  
Maria Kaiser  
[m.kaiser@dental-tribune.com](mailto:m.kaiser@dental-tribune.com)

**Marketing Director**  
Anna Kataoka  
[a.kataoka@dental-tribune.com](mailto:a.kataoka@dental-tribune.com)

**Accounting Assistant**  
Nirmala Singh  
[n.singh@dental-tribune.com](mailto:n.singh@dental-tribune.com)

**Education Director**  
Christiane Ferret  
[c.ferret@dtstudyclub.com](mailto:c.ferret@dtstudyclub.com)

**Published by Tribune America**  
© 2015 Tribune America, LLC  
All rights reserved.

*today* appears during the Ontario Dental Association Annual Spring Meeting in Toronto, Ontario, Canada, May 7 and 8, 2015.

**dti** Dental  
Tribune  
International

Tribune America makes every effort to report clinical information and manufacturers' product news accurately, but cannot assume responsibility for the validity of product claims, or for typographical errors.

The publishers also do not assume responsibility for product names or claims, or statements made by advertisers. Opinions expressed by authors are their own and may not reflect those of Tribune America or Tribune Group International.





**DENTSPLY BOOTH #1503**  
LOOK FOR YOUR DIAC  
COUPON BALLOT  
(IN YOUR DELEGATE BAG) FOR A  
**CHANCE TO WIN**  
AN APPLE SPORT WATCH!



**Combine Forces for a Complete Solution.**

Every one of DENTSPLY Class II restorative products is designed by dentists for dentists to give you the perfect instrument for predictable results. Use them together and you'll discover the only complete Class II restorative solution available that puts complete control of every Class II step in your hands.

SCAN THE QR CODE TO VIEW DR. CONTE'S CLASS II WEBINAR



**PalodentPlus<sup>+</sup>**  
Sectional Matrix System

**Prime-Bond<sup>+</sup> elect**  
Universal Dental Adhesive

**SureFil<sup>+</sup> SDR<sup>+</sup>**  
POSTERIOR BULK FILL FLOWABLE BASE

**TPH SPECTRA**  
UNIVERSAL COMPOSITE RESTORATIVE

**SmartLite<sup>+</sup>**  
FOCUS

**enhance<sup>+</sup>**  
FINISHING SYSTEM



Use them together and discover an elite level of dental care | The complete CLASS II TOTAL PRACTICE SOLUTION | [www.class2restorations.ca](http://www.class2restorations.ca)

**NEW!**



**MIDWEST<sup>E</sup>**  
Electric Handpiece System

**Introducing the Midwest E Electric Handpiece System, for dentists who want power and flexibility to match their skill and finesse.**

- Lightweight, autoclavable motor weighs only 59 g
- Intuitive, LED touch-screen user interface
- Well-balanced attachments available in high-speed, low-speed endodontic and straight configuration
- Three torque-stop options available in-endo mode
- Detachable faceplate to fit all delivery units

**TRY IT FOR YOURSELF AT OUR BOOTH #1503 AND RECEIVE A FREE GIFT!**

[www.dentsplymidwest.ca](http://www.dentsplymidwest.ca)

Actual prize may not be exactly as shown. DENTSPLY Canada reserves the right to change, cancel or alter these promotions at any time. Orders must be placed at the ODA2015 DENTSPLY Canada booth during show hours. © 2015 DENTSPLY Canada. Limit one ballot entry per customer.



# PIPS with laser-activated irrigation

Photoacoustic shockwave with irrigant debrides areas of root canal files can't reach

By Enrico Divito, DDS

■ Successful endodontic treatment depends upon maximal debridement and disinfection of the entire root canal system. The root canal system must be shaped to a convenience form that permits adequate cleaning and disinfection by elimination of microbes.<sup>1</sup>

The literature is clear that as much as 35 percent or more of the root canal system remains untouched by any instrumentation technique. Essentially no filing technique allows instruments to sculpt all canal walls and remove infected dentin.<sup>2</sup> To decrease the bacterial load and achieve better debridement, irrigation protocols are used prior to obturation.

The efficacy of the irrigants to decontaminate canal walls has seen significant improvements recently. Both negative and positive apical pressure irrigation techniques have been surpassed by ultrasonically activated irrigants, photo-activated disinfection and laser-activated irrigants in their ability to improve cleanliness of the canal system.<sup>3,4</sup>

In particular, the Er:YAG (Lightwalker Er:YAG & Nd:YAG dental laser, National Dental Inc., Barrie, Ontario) has shown to be effective at removing debris and the smear layer from canal walls.<sup>3,4</sup> A final application of the Er:YAG laser to the sodium hypochlorite already present within the canal, after standardized instrumentation, can result in improved cleaning of the canal walls with a higher quantity of open tubules (Fig. 1) in comparison to results without the use of the laser.<sup>3,4</sup>

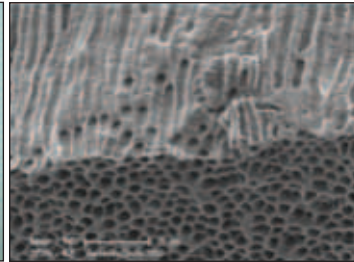
A new application of Laser-Activated Irrigation (LAI) has been recently introduced. Photon Induced Photoacoustic Streaming (PIPS™) uses an Erbium 2,940 laser to pulse extremely low energy levels of laser light to generate a photoacoustic shockwave, which streams irrigants throughout the entire root canal system.<sup>5</sup>

Using extremely short bursts of peak power, laser energy is directed down into the canal and the action actively pumps the tissue debris out of the canals while cleaning, disinfecting and sterilizing each main canal, lateral canals, dentinal tubules and canal anastomoses to the apex. This movement of irrigant is achieved without the need to place the radial and stripped laser tip (PIPS tip, Fig. 2) into the canal itself, as with other conventional hand and ultrasonic systems.

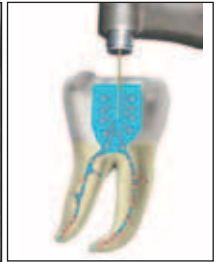
The tip is held stationary in the coronal aspect of the access preparation only. With the irrigant occupying the entire root canal system, the shock wave created by PIPS travels in all directions during activation and effectively debrides and removes organic tissue remnants. Through this laser-activated turbulent flow phenomenon, clinicians following the PIPS protocol are not required to place the tip into each canal, thus eliminating the need to enlarge and remove

## Here in Toronto

Learn more about the Lightwalker Er:YAG & Nd:YAG dental laser in the National Dental Inc. booth, No. 1028, in the exhibit hall.



• Fig. 1: Left, apical third of root treated with PIPS. Note clean surfaces without any thermal damage. Right, SEM of apical third showing extremely clean dentin tubules post PIPS with no sign of thermal damage. (Photos/Provided by Enrico Divito, DDS)



• Fig. 2: Left, close-up of tapered and stripped PIPS tip used for laser-activated irrigation. Right, position of the laser tip in the PIPS technique: steady in the pulp chamber and does not enter canal.

more tooth structure to deliver standard needle irrigation to the smaller and more delicate apical anatomy, commonly seen in the apical one third. The results are canal convenience forms that are more conservative, minimally invasive and biomimetic (Fig. 3), preventing the unnecessary removal of tooth structure.

Unlike other laser-activated irrigant techniques, PIPS is not a thermal event, rather subablative. Properly executed, PIPS creates turbulent photoacoustic agitation of irrigants that move fluids three dimensionally throughout the root canal system even as far as the apical terminus, distant from the radial stripped tip location. By activating the tip in the access cavity and outside the root canal system, the extremely low energy needed to activate the unique PIPS tip (20 mJ or less) is below the threshold of ablation for dentin. Ledging and thermal effects that have plagued the widespread use of other laser systems is completely avoided at the energy levels used by the PIPS technique.<sup>5,6</sup>

Recent testing, performed at the University of Tennessee by Dr. Adam Lloyd, chairman of the department for endodontics, objectively confirmed the improved cleaning and debridement of organic and inorganic tissue left by instrumentation. Microcomputed tomography scans were used to assess before and after volumetric change in the internal intaglio of lower first molars treated with PIPS protocol (Fig. 4). Sequential slicing beginning at 6 mm from the apex and moving down to the last 2 mm demonstrated that all slice images showed significant improvements after PIPS.

The importance of these findings is far reaching. PIPS now offers the dentist a less technique-sensitive, minimally invasive and time-reducing method for irrigating and preparing endodontic root canal systems. Because PIPS has demonstrated its ability to decontaminate and debride areas that files and instrumentation cannot reach, success rates rise and retreatment for past failures is possible.<sup>7</sup>

PIPS is also helpful in locating and helping negotiate calcified canals. PIPS is a valuable additional tool in the treatment of endodontics regardless of the shaping and obturation system used.

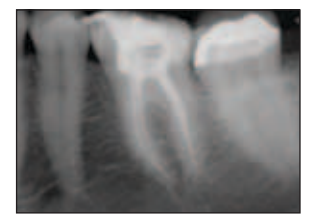
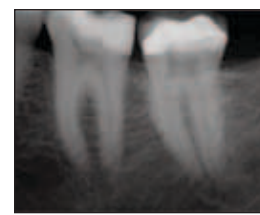
Laser technology used in endodontics during the past 20 years has undergone an important evolution. Research in recent years has been directed toward producing laser technologies (such as impulses of reduced length, radial-firing and stripped tips) and techniques (such as LAI and PIPS) that are able to simplify

laser use in endodontics and minimize the undesirable thermal effects on the dentinal walls, using lower energies in the presence of chemical irrigants. EDTA has proved to be the best solution for the LAI technique that activates the liquid and enhances its cleaning of the smear layer. The use of a laser (PIPS) to activate sodium hypochlorite increases its antimicrobial activity.

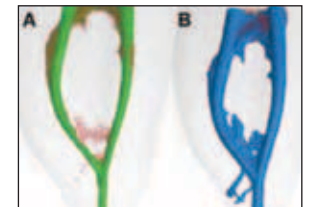
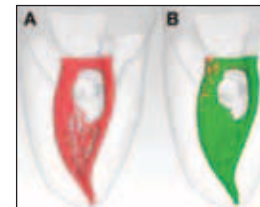
Finally, using the correct protocol, the PIPS technique reduces the thermal effects and exerts both a stronger cleaning and bactericidal action, because of its streaming of fluids initiated by the photonic energy of the laser. Further studies are currently underway to validate LAI and PIPS technique as innovative technologies in modern endodontics.

## References

1. Clark D, Khademi JA. "Case studies in modern molar endodontic access and directed dentin conservation" *DentClin NorthAm.* 2010;54:275-289.
2. Peters OA, Schonberger K, Laib A. Effects of four Ni-Ti preparation techniques on root canal geometry assessed by micro-computed tomography. *International Endodontic Journal.*
3. George R, Meyers IW, Walsh LJ (2008) Laser activation of endodontic irrigants with improved conical laser fiber tips for removing smear layer in the apical third of the root canal. *J Endod* 34:1524-1527 4.
4. de Groot SD, Verhaagen B, Versluis M, Wu MK, Wesselink PR, van der Sluis LW (2009) Laser-activated irrigation within root canals: cleaning efficacy and flow visualization. *Int Endod J* 42:1077-1083.
5. Li Z, Code JE, Van De Merwe WP. Er:YAG Laser ablation of enamel and dentin of human teeth: determination of the ablation rates at various fluences and pulse repetition rates. *Lasers in Surgery and Medicine.* 1992;12:625-630.
6. Majaron B, Lukac M, Sustercic D, et al. Threshold and efficiency analysis in Er:YAG laser ablation of hard dental tissue. *Proc SPIE.* 1996;2922:233-242.
7. DiVito, E., O.A. Peters, and G. Olivi, Effectiveness of the erbium:YAG laser and new design radial and stripped tips in removing the smear layer after root canal instrumentation. *Lasers Med Sci.* 2012. 27(2): p. 273-280.



• Fig. 3: Left, pre-treatment. Right, post-treatment obturation after PIPS. Tooth instrumented to a #25/06 taper. Note the conservative convenience form maintaining more original anatomy of root canal system and reducing the need to use larger file sizes conserving more dentin tooth structure.



• Fig. 4: Left, mandibular molar canal system showing isthmus before (A, red canal) PIPS laser-activated irrigation. Areas of organic tissue and debris from instrumentation have been completely eliminated, as highlighted by post-PIPS image (B, green canal). Right, mandibular molar with canal preparation to a size 30/.04 (A, green canal) obturated with nano-particle BC Sealer (Brasseler USA, Savannah, Ga.) and single cone obturation (B, blue).

## About the author



Dr. Enrico DiVito formed his dental practice in 1980 in Scottsdale, Ariz. In 2004, he formed the Arizona Center for Laser Dentistry. He is the founder and director of the state-accredited Arizona School of Dental Assisting (ASDA). In addition to teaching at ASDA, DiVito is also a clinical professor at the Arizona School of Dentistry and Oral Health and is helping to create its department of laser dentistry. He earned his undergraduate degree from Arizona State University in 1980 and is a graduate of the University of the Pacific, Arthur A. Dugoni School of Dentistry with honors, receiving several clinical excellence awards. He can be reached at [edivito@azcld.com](mailto:edivito@azcld.com).



# IT'S TIME TO PUT **PATIENT SAFETY FIRST.**

Potentially unsafe "Gray Market" or illegal "Black Market" refers to products and materials often found at deep discounts through unauthorized channels. These include products that are:



## \$6 BILLION

The U.S. dental supply market is a \$6 billion industry\*



Some estimate nearly 15% of the U.S. dental market is gray or black\*\*



## 5-8% OF PRODUCTS

One manufacturer estimated 5-8% of products carrying their label were in fact counterfeit\*\*\*

Visit [DentalSupplyIntegrity.com](http://DentalSupplyIntegrity.com)

Deep-discount dental products that appear "too good to be true" are often just that. While low prices are appealing, the risks may outweigh the rewards. Protect your dental patients from potentially unsafe gray market and illegal black market products. Learn more about gray market dental supplies and Patterson's commitment at [DentalSupplyIntegrity.com](http://DentalSupplyIntegrity.com).



\*\*"Dental Equipment and Supplies Manufacturing in the U.S. and Its International Trade" Supplier Relations US, LLC, Irvine, CA, February, 2014.

\*\*\*"Shades of Gray" Mentor, Santa Ana, CA, December, 2013.

\*\*\*\*"Are you using 'gray-market' or counterfeit dental products?" Journal of American Dental Association, June, 2010.



# New high-tech electric handpiece delivers ease, power and control

## Midwest E joins DENTSPLY Canada's handpiece lineup

By DENTSPLY Canada Staff

Recent advancements in technology have made electric handpieces an increasingly popular choice among dentists across North America. Compared with traditional air-turbine instruments, electric handpieces provide the dentists with several benefits, including constant power and torque and adjustable bur speeds for a broad range of applications.

### One of the smallest and lightest electric motors offered today

The Midwest E Electric Handpiece System is the latest electric handpiece system available on the market and includes the powerful Midwest E motor, which weighs only 59 grams and measures 1.25 inches – one of the smallest and lightest electric motors offered today. It is designed to deliver constant torque for smooth, quiet operation. It won't stall under load, which can help shorten chairtime and procedural efficiency. Autoclavable for easy infection control, the Midwest E motor features an "E" type attachment and spins up to 40,000 RPM.

### Detachable faceplate for easy integration into delivery units

At the heart of the system is an intuitive LCD touchscreen interface that lets users fine tune the speed, light and rotation to optimize performance for a variety of dental procedures – from caries removal to finishing and contouring to root canals. The faceplate is detachable for easy integration into delivery units.

Compact and lightweight to facilitate control and maneuvering, the Midwest E attachments are offered in high-speed, low-speed, endodontic and straight configurations. Color-coded for easy identification, the compact contra-angle attachments have a textured finish and ridges designed for an enhanced grip. All attachments feature high-quality components and are crafted from stainless steel to provide years of reliable service.

### Field-replaceable hose and a quick-disconnect feature

The Midwest E system also offers a field-replaceable hose, which helps avoid clinical delays due to service calls. Its stainless-steel connector is compatible with most dental units



### Here in Toronto

Test out the new Midwest E Electric Handpiece in the DENTSPLY Canada booth (No. 1503) in the exhibit hall and receive a free gift compliments of DENTSPLY Canada. You can contact the Woodbridge, Ontario-based company at (800) 263-1437, or you can visit the company online at [www.dentsply.ca](http://www.dentsply.ca).



At the heart of the Midwest E system is an intuitive LCD touchscreen interface that lets users fine tune the speed, light and rotation to optimize performance for a variety of dental procedures – from caries removal to finishing and contouring to root canals. Compact and lightweight to facilitate control and maneuvering, the Midwest E attachments are offered in high-speed, low-speed, endodontic and straight configurations. Color-coded for easy identification, the compact contra-angle attachments have a textured finish and ridges designed for an enhanced grip. (Photos/Provided by DENTSPLY Canada)

and the ergonomic 360-degree swivel feature increases operator comfort.

Whether it's operating in the high-speed, low-speed or endo settings, the Midwest E cuts quickly and efficiently. A quick-disconnect feature makes it easy to change attachments.

In endo mode, three torque-stop options are available, so it is an important feature for offices that per-

form endo procedures regularly – or for practices that plan to in the future.

### Two-year warranty on system, three years on attachments

The Midwest E comes with a three-year warranty on the system and a two-year warranty on attachments (extended to 30 months when attachments are maintained with the Mid-

west Automate Maintenance Unit).

Come and try the new Midwest E Electric Handpiece in booth No. 1503 in the exhibit hall and receive a free gift compliments of DENTSPLY Canada.

DENTSPLY Canada, based in Woodbridge, Ontario, can be contacted at (800) 263-1437, or you can visit the company online at [www.dentsply.ca](http://www.dentsply.ca).



# Dryz™

GINGIVAL HEMOSTATIC  
RETRACTION PASTE

INTRODUCING

## NEW! UNIT DOSE CAPSULES

For even more convenient dispensing  
and to help promote asepsis.

- Stops gingival bleeding and seepage that may interfere with impression taking.
- Fast-acting.
- Light green color makes the material easy to detect.
- Fraction of the cost of other retraction materials.
- Great for tissue management when seating restorations, placing rubber dam clamps (controlling bleeding), bleaching teeth (to manage moisture) and restoring subgingival cavities.



New Unit Dose Kit includes 30 unit dose capsules (0.24 g/capsule). Fits most Centrix® dispensers (required & not included).

### CREATE A DRY WORKING ENVIRONMENT EVERY TIME.

Dryz™ is terrific for use alone or in conjunction with retraction cord or compression caps. Dryz is fast-acting in stopping gingival bleeding and seepage from crevicular fluid that may interfere with impression taking.

The light green color of Dryz contrasts nicely with gingiva, blood and tooth structure, making it easy to detect where the material has been placed. Dryz is quickly removed with an air/water syringe and leaves no residue to interfere with impressions or seating of restorations.

### USING DRYZ IS A BREEZE!

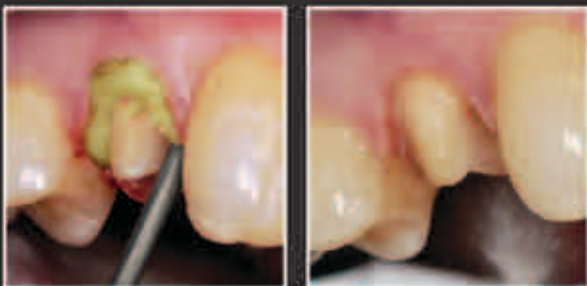
Prior to taking your impression, rinse and dry the prep. Isolate the area and simply syringe Dryz into the sulcus directly from the syringe (we don't make you purchase a special dispensing gun to extrude the material). Dryz will create a nice space between the gingival tissue and tooth surfaces while controlling any bleeding with its aluminum chloride content.

Dryz is also great for tissue management when you're seating permanent crowns or bridges, placing rubber dam clamps, bleaching teeth and restoring subgingival cavities. It controls seepage that may contaminate a sensitive, restorative material, allowing you to do optimal restorative dentistry.

### TRY IT RISK-FREE TODAY!\*

- **NEW!** Dryz™ Unit Dose Capsules (S183)..... CAN \$84.50  
Includes 30 unit dose capsules (0.24 g/capsule). Fits most Centrix® dispensers (required & not included).
- Dryz™ Gingival Hemostatic Retraction Paste (S180).... CAN \$67.60  
Includes 7 syringes and 15 applicator tips.
- Dryz™ Value Pack (S182)..... CAN \$200.00  
Includes 25 syringes and 55 applicator tips!  
*Save almost a dollar per syringe with the Value Pack!*
- Dryz™ Luer Lock Applicator Tips,  
40 pieces (S181) ..... CAN \$33.80

Harry Lenc, DMD



Left: Syringe Dryz™ into the gingival sulcus, making sure to fully contact all of the soft tissue.

Right: Rinse Dryz using copious amounts of water to reveal a clean, retracted gingival sulcus and margin of the prepared tooth.



Order direct for a 45-DAY RISK-FREE TRIAL!  
1-800-243-7446 • www.parkell.com

**parkell**  
inc.

Solutions for the problem-solving  
dental professional since 1948.



\*If you're not satisfied, call us within 45 days. We'll have it picked up at our expense, and give you a full refund—including your original ground shipping charges. (Express shipping will not be reimbursed). Trial offer valid only when product is purchased directly from Parkell, Inc. 0515 | ODADAILY



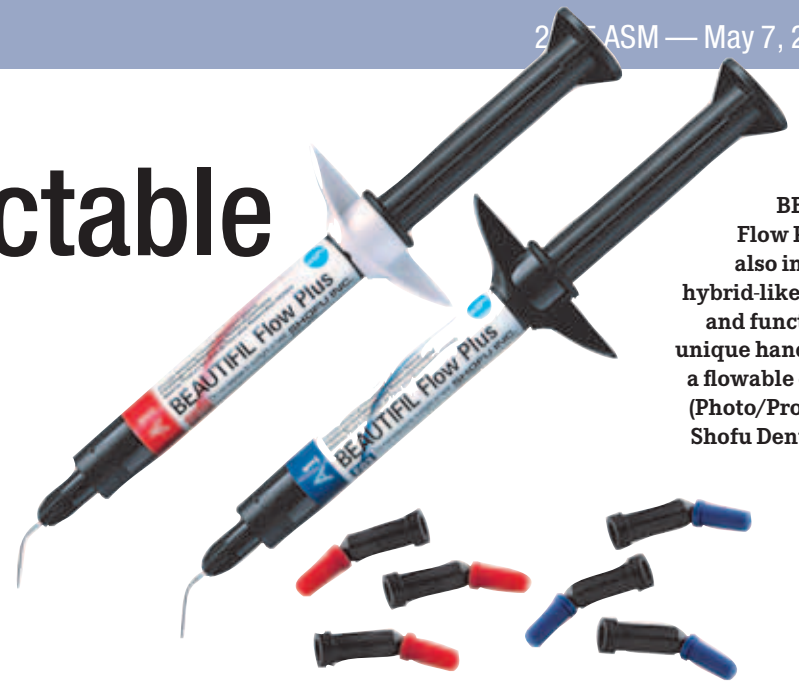
# Leading hybrid injectable also now in tips

## Here in Toronto

Visit Shofu Dental Corp. in booth No. 1902 in the 2015 ASM exhibit hall to learn more about BEAUTIFIL Flow Plus, now available in tips. For more information about BEAUTIFIL Flow Plus and other Shofu products, call (800) 827-4638 or visit the company online at [www.shofu.com](http://www.shofu.com).

■ Shofu Dental Corp. is holding product demonstrations at booth No. 1902, featuring its injectable hybrid restorative, BEAUTIFIL Flow Plus, now available in tips. Dentists will now have this preferred flowable in their fingertips.

BEAUTIFIL Flow Plus combines hybrid-like strength and functionality, unique handling and stack ability and a flowable delivery, according



Shofu Dental says its BEAUTIFIL Flow Plus, now also in tips, has hybrid-like strength and functionality, unique handling and a flowable delivery. (Photo/Provided by Shofu Dental Corp.)

to the company. Additionally, the material has 15 percent more radiopa-

city than enamel and offers the benefit of fluoride release and rechargeability. Those interested in seeing the material firsthand are encouraged to come check it out at the Shofu booth.

According to Shofu, BEAUTIFIL Flow Plus represents the next step in the evolution of restorative materials based on its convenient flowable delivery system and physical properties and functionality that rival leading hybrid composites.

Unlike other flowables, BEAUTIFIL Flow Plus has stay-put handling and physical properties that allow use on the occlusal surface and marginal ridge, eliminating the need to pack a hybrid composite on top.

### Smooth, self-leveling

A flowable base, liner and final restorative material, BEAUTIFIL Flow Plus is approved for all indications (Class I-V). With a smooth, self-leveling consistency, the material leaves a tight marginal seal on the bottom and a smooth, ready-to-polish surface on top. Moreover, Shofu's proprietary S-PRG (surface pre-reacted glass) technology provides sustained fluoride release and recharge that can't be found in any other composite material, according to the company.

BEAUTIFIL Flow Plus is available in two distinct viscosities. F00 (zero flow) offers precision stacking, and F03 (low flow) is an ideal base/liner.

### Opportunity to sample with two introductory kits

BEAUTIFIL Flow Plus is available in two introductory kits. The standard kit (PN 2000S) offers two 2.2-gram syringes of both viscosities in shades A2 and A3, and the pedo kit (PN 2000P) offers two 2.2-gram syringes in both viscosities in shades A1 and bleach white.

Both kits also contain samples of Shofu's top-selling products, including the seventh-generation bonding agent BeautiBond, One Gloss, Super Snap and Shofu's hybrid material, BEAUTIFIL II. The kit retails for \$102.25 (a \$160 value). Also available in shades B1, B2, and C2 in both viscosities.

Stop by the Shofu booth, No. 1902, to see BEAUTIFIL Flow Plus for yourself for a product demo, or for more information, call (800) 827-4638 or visit [www.shofu.com](http://www.shofu.com).

(Source: Shofu Dental Corp.)

AD

MONTRÉAL, Canada  
**2015**  
 May 22<sup>nd</sup> to 26<sup>th</sup>  
 Palais des congrès de Montréal

Journées dentaires  
 internationales  
 du Québec

CANADA'S  
**LARGEST BILINGUAL**  
 DENTAL MEETING

45<sup>th</sup> ANNUAL CONVENTION  
 OF THE ORDRE DES DENTISTES DU QUÉBEC

[www.odq.qc.ca](http://www.odq.qc.ca)

Ordre des dentistes  
 du Québec

DENTISTS  
 DOCTORS WHO PUT  
 A SPOTLIGHT ON YOUR  
 ORAL HEALTH.



# EyeSpecial C-II

Visit us  
**Booth #1902**

**HIPAA  
COMPLIANT**

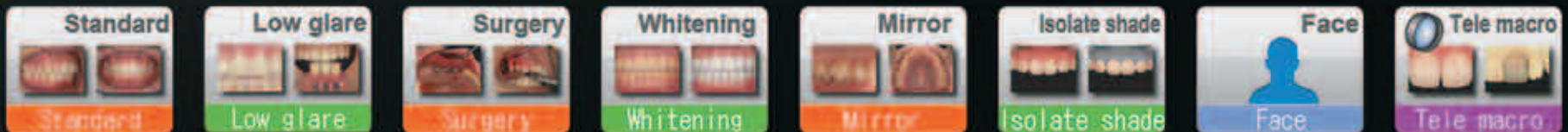


Built in dental cropping grid lines to get a clear and concise image, the first time.



Scan Here for  
Instructional Video

## SMART DIGITAL CAMERA, DESIGNED EXCLUSIVELY FOR DENTISTRY



- 8 Dental shooting modes – Easier, faster and more reproducible images
- Auto focus, zoom and isolate
- Auto flash adjustment for true color
- 3.5 inch LED/LCD touchscreen – Works with exam gloves
- Water/chemical resistant – Essential for infection control in the office
- HIPAA compliant – protects patient privacy and security\*

\*Brinker, S. (2015, January). HIPAA compliance and digital photography with personal mobile devices. *Dental Products Report*, 76-80

