

**ENDO TRIBUNE**

Treatment of 16 with severe curvature by Dr. Justin Dinley, UK

►A1-4

**HYGIENE TRIBUNE**

Dental Hygienists gather for annual seminar in Dubai

►B1-4

**IMPLANT TRIBUNE**

Germany's first implantologist Prof. Dr. Hans L. Grafelmann turns 92

►C1-4

**ORTHO TRIBUNE**

Have fun, will brush: Improving orthodontic outcomes with effective home care

►D1-4

## Strengthening the editorial powerhouse

### DTI holds first Editors' Meeting

By DTI

**LEIPZIG, Germany:** Providing quality and valuable information in dentistry has always been a primary aim of the Dental

Tribune International (DTI) publishing group. As the group's network and the dental industry are growing rapidly, a focus on content is more important today



Almost 40 representatives of the DTI publishing group recently gathered in Germany. (Photograph: Luke Gribble, DTI)

03-04 Nov 2017 | CONFERENCE  
03-04 Nov 2017 | EXHIBITION  
03 Nov 2017 | DHS  
01-05 Nov 2017 | HANDS-ON COURSES

## 9<sup>TH</sup> DENTAL FACIAL COSMETIC CONFERENCE & EXHIBITION

Joint Meeting with

## 6<sup>TH</sup> AAID GLOBAL CONFERENCE DENTAL HYGIENIST SEMINAR (DHS)

**DUBAI, UAE**

ACCREDITATION  
HAAD | DHA | CE Credits

ADA CERP® Continuing Education Recognition Program

CAPP is an Advanced Professional Practice (APP) in an ADA CERP Recognized Provider. ADA CERP is a service of the American Dental Association to assist dental professionals in providing quality patient care through continuing education. For more information, contact CERP at www.dental-tribune.com. CAPP designates this activity for 14CE Credits.

www.cappmea.com/aesthetic



Veres presented a number of new features of the new Dental Tribune website



Stop at the famous Monument to the Battle of the Nations in Leipzig

than ever before. For this reason, editorial representatives from 20 countries recently came together for the first DTI Editors' Meeting.

From 31 May to 2 June, DTI hosted the editorial heads of the publishing group in Leipzig, where the company's international headquarters is located. Almost 40 representatives attended to discuss the cornerstones of journalism and production guidelines, which are most important for

assuring the quality of the DTI publishing portfolio. The group currently produces over 130 print publications and manages multiple websites that together reach more than 650,000 dentists in over 90 countries.

As part of its continuing portfolio expansion and in response to the growing importance of digital media, DTI

e.max<sup>®</sup>  
IPS

LIFELIKE ESTHETICS –  
EFFICIENTLY PRESSED



### IPS e.max<sup>®</sup> PRESS MULTI

THE WORLD'S FIRST POLYCHROMATIC PRESS INGOT

- Monolithic LS, restorations showing a lifelike shade progression
- Exceptional combination of strength, esthetics and efficiency
- For crowns, veneers and hybrid abutment crowns
- Coordinated with high-precision Programat press furnaces
- Maximum cost effectiveness in the press technique



www.ivoclarvivadent.com

Ivoclar Vivadent AG  
Bendererstrasse 2 | 9494 Schaan | Liechtenstein  
Tel.: +423 235 35 35 | Fax: +423 235 33 60

ivoclar  
vivadent<sup>®</sup>  
passion vision innovation

◀Page 1



The tour covered Leipzig's major sights

is relaunching its website this year. Thus, another focus of the meeting was the further development of the new DTI website in order to make it a more effective tool for content provision that suits the needs of dental professionals all over the world. With improved usability and a modernised and interactive layout, the revamped website will feature the latest updates in dentistry, industry-related news, and upcoming webinars and global events.

"Content is our biggest asset. Our global editorial powerhouse has to be developed further, as it will become the main driver of our business in the future," said Torsten Oemus, President and CEO of DTI.

The first DTI print publication, the today trade show newspaper, appeared in 1999 during the International Dental Show. The newspaper is now published at over 70 dental events worldwide, providing comprehensive information and coverage that enables better planning and orientation, as well as general business information for congress participants and exhibition visitors.

The first Dental Tribune edition was published in 2001 in the Asia-Pacific region. Today, it is the largest global newspaper, with over 30 editions in 25 languages. Since its establishment, DTI has fostered relationships with major dental associations, like the FDI World Dental Federation. For the last 12 years, DTI has published Worldental Daily, the official newspaper at the FDI Annual World Dental Congress.

In 2007, DTI launched its first specialty publication with the cosmetic dentistry magazine. Today, the continuing education magazines represent the premium segment of the publisher's portfolio and offer information about the most significant developments in digital dentistry, implantology, dental lasers, orthodontics, prevention and endodontics. The latest additions to the print portfolio are the Clinical Masters magazine, which is published annually as a complement to the continuing education Clinical Masters Programs, and the Journal of Oral Science and Rehabilitation, both introduced in 2015. [DTI](#)

# Knowledge through education

Part of 9<sup>th</sup> Dental Facial Cosmetic Conference & Exhibition  
01-05 November 2017 | InterContinental Hotel, Dubai Festival City, UAE

**CE Credits AVAILABLE**

By Dental Tribune MEA / CAPPmea

November will mark the start of a series of workshops organised by CAPP (Centre for Advanced Professional Practices) that will focus on various topics and be led by experts in the dental industry from different parts of the world.

The topics that will be available are as follows:

**1. Treatment planning and functional smile design: dynamic smile analysis, face analysis and teeth selection**

by Dr. Eduardo Mahn, Chile  
01 November 2017

**2. The All ceramic course: How to choose the best ceramic material and prepare for the different type of crowns we currently have?**

by Dr. Eduardo Mahn, Chile  
02 November 2017

**3. Advanced Restorative Masterclass - Aesthetic Indirect Restorations**

by Prof. Brian Millar & Bill Sharpling, UK  
02 November 2017

**4. From Reciprocation To Rotation: The Progression Of Single File Endodontics**

by Prof. James Prichard, UK  
02 November 2017

**5. Direct Veneers: How to Create the Right Shape and Texture and Achieve the Desire Shade**

by Dr. Eduardo Mahn, Chile  
03 November 2017

**6. Minimal Invasive and Non Prep Veneers: Smart Smile Design with Veneers - Day 1 + Day 2**

by Asst. Prof. Dr. Cagdas Kislaoglu  
03-04 November 2017

**6. ITOP: Individually Trained Oral Prophylaxis**

by Dr. Carla Mora, Chile  
04 November 2017

**7. Post - endodontic - treatment: Should we place posts, do crowns or just composites and onlays?**

by Dr. Eduardo Mahn, Chile  
04 November 2017

**8. The New Concept of ABB - Certification Course**

by Dr. Andrew Wallace, UK, IAA  
04 November 2017

**9. Veneers Demystified: A Masterclass Hands-on Workshop for Clinical Success**

by Dr. Ozair Bandy, USA  
05 November 2017

**10. New Concepts and Innovations In The Diagnosis and Management of Dentofacial Malformations**

by Prof. Ashraf Ayoub, UK  
05 November 2017

**10. Indirect Veneers**

by Dr. Munir Silwadi, UAE  
05 November 2017

**11. Veneers Vs Crowns: the Challenge in Smile Design**

by Dr. Eduardo Mahn, Chile  
05 November 2017

Participants who have taken the courses in previous years have pro-

vided positive and enthusiastic feedback.

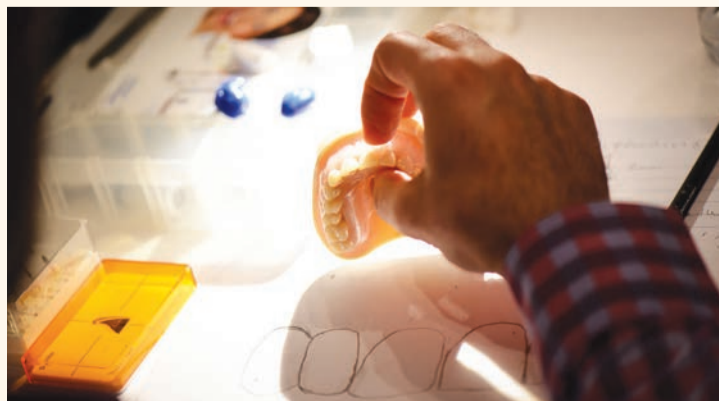
The hands-on experience with CAPP has led to a great response from dentists, who have begun using their new knowledge in their practices since attending the course.

The courses are part of the annual dental conference: 9th Dental Facial Cosmetic Conference & Exhibition that takes place at the InterContinental Hotel, Dubai Festival City, UAE on 03-04 November 2017.

More information on CAPP courses can be found at [www.cappmea.com/aesthetic/hands\\_on](http://www.cappmea.com/aesthetic/hands_on) [DTI](#)



Delegates during the hands-on training



During the hands-on training of Dr. Eduardo Mahn, Chile

## IMPRINT

**GROUP EDITOR**  
Daniel ZIMMERMANN  
[newsroom@dental-tribune.com](mailto:newsroom@dental-tribune.com)  
Tel.: +44 161 223 1830

**CLINICAL EDITORS**  
Magda WOJTKIEWICZ  
Nathalie SCHÜLLER

**EDITORS**  
Kristin HÜBNER  
Yvonne BACHMANN

**EDITOR & SOCIAL MEDIA MANAGER**  
Monique MEHLER

**MANAGING EDITOR & HEAD OF DTI COMMUNICATION SERVICES**  
Marc CHALUPSKY

**JUNIOR PR EDITOR**  
Julia MACIEJEK

**COPY EDITOR**  
Sabrina RAAFF

**PUBLISHER/PRESIDENT/CEO**  
Torsten R. OEMUS

**CHIEF FINANCIAL OFFICER**  
Dan WUNDERLICH

**CHIEF TECHNOLOGY OFFICER**  
Serban VERES

**BUSINESS DEVELOPMENT MANAGER**  
Claudia SALWICZEK-MAJONEK

**PROJECT MANAGER ONLINE**  
Tom CARVALHO

**JUNIOR PROJECT MANAGER ONLINE**  
Hannes KUSCHICK

**E-LEARNING MANAGER**  
Lars HOFFMANN

**EDUCATION DIRECTOR TRIBUNE CME**  
Christiane FERRET

**EVENT SERVICES/PROJECT MANAGER TRIBUNE CME & CROIXTURE**  
Sarah SCHUBERT

**MARKETING SERVICES**  
Nadine DEHMEL

**SALES SERVICES**  
Nicole ANDRÄ

**ACCOUNTING SERVICES**  
Anja MAYWALD  
Karen HAMATSCHEK  
Manuela HUNGER

**MEDIA SALES MANAGERS**  
Antje KAHNT (International)  
Barbora SOLAROVA (Eastern Europe)  
Hélène CARPENTIER (Europe)  
Maria KAISER (North America)  
Matthias DIESSNER (Key Accounts)  
Melissa BROWN (International)  
Peter WITTECZEK (Asia Pacific)  
Weridiana MAGESWKI (Latin America)

**EXECUTIVE PRODUCER**  
Gernot MEYER

**ADVERTISING DISPOSITION**  
Marius MEZGER

**DENTAL TRIBUNE INTERNATIONAL**  
Holbeinstr. 29, 04229 Leipzig, Germany  
Tel.: +49 341 48 474 302  
Fax: +49 341 48 474 173  
[www.dental-tribune.com](http://www.dental-tribune.com)  
[info@dental-tribune.com](mailto:info@dental-tribune.com)

**DENTAL TRIBUNE ASIA PACIFIC LTD.**  
Room A, 20/F  
Harvard Commercial Building  
105-111 Thomson Road, Wanchai, HK  
Tel.: +852 3113 6177  
Fax: +852 3113 6199

**THE AMERICA, LLC**  
116 West 23rd Street, Ste. 500, New York  
N.Y. 10011, USA  
Tel.: +1 212 244 7181  
Fax: +1 212 244 7185

**DENTAL TRIBUNE MEA EDITION EDITORIAL BOARD**

Prof. Khaled BALTO, KSA  
Prof. Paul TIPTON, UK  
Dr. Aisha SULTAN ALSUWAIDI, UAE  
Dr. Ninette BANDAY, UAE  
Dr. Nabeel HUMOOD ALSABEEHA, UAE  
Dr. Mohammad AL-OBAIDA, KSA  
Dr. Meshari F. ALOTAIBI, KSA  
Dr. Jasim M. AL-SAEEDI, Oman  
Dr. Mohammed AL-DARWISH, Qatar  
Dr. Dobrina MOLLOVA, UAE  
Dr. Munir SILWADI, UAE  
Dr. Khaled ABOUSEADA, KSA  
Dr. Rabih ABI NADER, UAE  
Dr. Ehab RASHED, UAE  
Aiham FARRAH, CDT, UAE  
Retty M. MATTHEW, UAE

**PARTNERS**  
Saudi Dental Society  
Lebanese Dental Association  
Qatar Dental Society  
Oman Dental Society

**DIRECTOR OF mCME**  
Dr. Dobrina MOLLOVA  
[mollova@dental-tribune.me](mailto:mollova@dental-tribune.me)  
Tel.: +971 50 42 43072

**DIRECTOR**  
Tzvetan DEYANOV  
[deyanov@dental-tribune.me](mailto:deyanov@dental-tribune.me)  
Tel.: +971 55 11 28 581

**DESIGNER**  
Kinga ROMIK  
[k.romik@dental-tribune.me](mailto:k.romik@dental-tribune.me)

**PRINTING HOUSE & DISTRIBUTION**  
Al Nisr Printing  
P. O. Box 6519, Dubai, UAE  
800 4585/04-4067170



# Solutions for better, safer, faster dental care

Dentsply and Sirona have joined forces to become the world's largest provider of professional dental solutions. Our trusted brands have empowered dental professionals to provide better, safer and faster care in all fields of dentistry for over 100 years. However, as advanced as dentistry is today, together we are committed to making it even better. Everything we do is about helping you deliver the best possible dental care, for the benefit of your patients and practice.

Find out more on  
[dentsplysirona.com](https://dentsplysirona.com)

#### Clinical Procedures

- Preventive
- Restorative
- Orthodontics
- Endodontics
- Implants
- Prosthetics

#### Platform Technologies

- CAD/CAM
- Imaging Systems
- Treatment Centers
- Instruments

---

THE DENTAL  
SOLUTIONS  
COMPANY™

 **Dentsply  
Sirona**

# A Challenging Class II Restoration

By Dr. Stergios Zafiriadis, DDS, Switzerland

## About the Case

A cusp fracture on the lower second premolar brought this patient to the office. The large amalgam restoration was removed, and secondary decay noted. Once the existing amalgam and decay were removed, the remaining tooth structure indicated a very large, very challenging Class II restoration was required.

## Challenge

Traditionally, a restoration of this size would require an incremental placement technique in which sev-

eral time consuming layers would be required. In addition, this adds to the chance of contamination of the tooth, or contamination between layers of composite. Bulk placement of Filtek™ Bulk Fill Posterior Restorative allows this restoration to be completed in one increment, making the procedure more time-efficient.

## The 3M Difference

Completing a restoration of this scale can be challenging. Filtek™ Bulk Fill Posterior Restorative enables one-step placement up to 5mm for fast and easy posterior restorations. **DT**

## Step by Sep



Fig. 1: Preoperative. Broken cusp and secondary decay are evident on this lower second premolar



**Dr. Stergios Zafiriadis, Switzerland**  
Dr. Zafiriadis is a Dental associate in the Practice Zahnärzte @ Zollikenberg, Zurich. In 2001 he graduated from the University of Zurich with the degree in dentistry and after that he had a two-year postgraduate courses in preventive dentistry, periodontics,

and endodontics. He is working in all areas of dentistry with emphasis on computer generated dentistry, implantology and preventive dentistry. He is also having various publications and carrying out courses covering diverse topics in dentistry. Dr. Zafiriadis is a member of the following organizations: ITI (International Team for Implantology), SGI (Swiss Organization for Implantology), SGZ (Swiss Society of Computer Aided Dentistry), ASIO.

Dr. Zafiriadis has received honoraria from 3M.

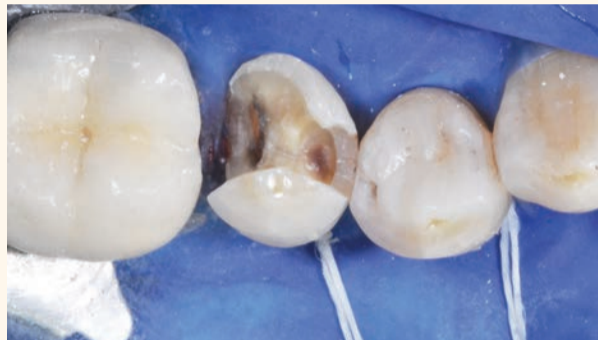


Fig. 2: The tooth has been isolated and prepared



Fig. 3: Enamel is being etched using a selective etch approach. A universal adhesive will be used to etch and bond the dentin



Fig. 4: After rinsing, Single Bond Universal Adhesive is being applied to the etched enamel and the unetched dentin. After solvent evaporation, the adhesive is light-cured



Fig. 5: Filtek™ Bulk Fill Posterior Restorative, shade A3 was then placed in a single increment



Fig. 6: Contouring was accomplished using traditional hand instruments

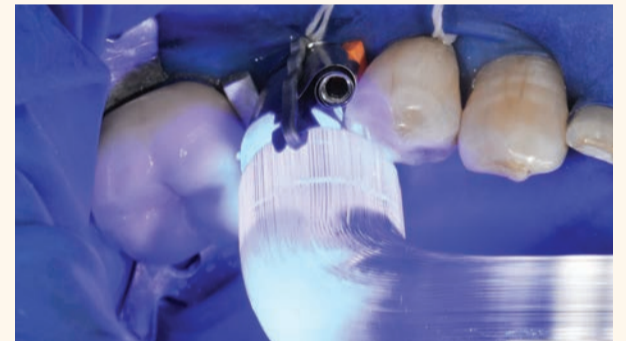


Fig. 7: It was then cured according to the Instructions for Use



Fig. 8: Sof-Lex™ Discs were used to help contour interproximally



Fig. 9: Sof-Lex™ Spiral Polishing Wheel is excellent for polishing occlusal surfaces



Fig. 10: The final restoration

## Polish with diamonds. Skip the paste.

A difference that you can see!

By 3M

How much time and effort do you spend creating beautiful smiles? Whether you currently use a rubberized finishing and polishing system or an intraoral diamond polish, the process can be time-consuming. And, even with your best effort, the gloss may not last. 3M has a simple solution for both problems, using two of our innovative technologies.

Forget the paste. Sof-Lex™ Pre-polishing spiral prepares the restoration for final gloss, while diamond-impregnated polishing spiral gives your restorations that gorgeous paste-like gloss. The system offers the convenience of a rubberized sys-

tem while also adapting to all tooth surfaces.

You'll be happy to know that while the spirals are effective, they're also kinder to gingival tissues\*—and maintain the integrity and anatomy of your restorations!

When patients leave your office smiling, you'll marvel at how simple it's become to create beautiful, natural-looking esthetics.

You're going to love how easy it is to create a beautiful smile!

\*Compared to other finishing and polishing tools. **DT**



### Sof-Lex™ Pre-Polishing Spiral

The pre-polishing spiral (beige) smooths and removes scratches in restorations that develop during contouring and prepares the surface for high-gloss polishing.



### Sof-Lex™ Diamond Polishing Spiral

The diamond polishing spiral (pink) contains diamond particles to create a smooth, high gloss polish.

To learn more about Sof-Lex™ Diamond Polishing System please visit [www.3M.com/dental](http://www.3M.com/dental)



3M Oral Care

# Takes less time, so you have more time.

There are things in life you don't want to miss. And the more complicated a procedure is, the greater chance there is for something to go wrong and disrupt your day. That's why 3M Oral Care has simplified posterior restorations ... the most frequently performed direct restoration. By using Filtek™ Bulk Fill Posterior Restorative with three other innovative products, you'll move through posterior restorations with speed and simplicity. See how our Posterior Restorative Procedure can help keep you on schedule ... because we know your time outside of work matters.

[www.3MGulf.com/espe](http://www.3MGulf.com/espe)

Single Bond  
Universal Adhesive



Filtek™ Bulk Fill  
Posterior Restorative



Elipar™  
DeepCure-S  
LED Curing Light



Sof-Lex™ Spiral  
Finishing and  
Polishing Wheels



# Celtra® Press – Makes the difference

The new generation of high strength glass-ceramic, zirconia-reinforced lithium silicate (ZLS), is now available in a pressable version

## By Dentsply Sirona

Celtra® Press is the new class of zirconia-reinforced lithium silicate material available to labs for pressing. This unique material provides top aesthetics and is virtually impossible to tell apart from a natural tooth.

Dentsply Sirona has been supplying Celtra® Duo zirconia-reinforced lithium silicate, in the form of CAD/CAM blocks for CEREC and inLab machines, since 2013. Celtra® Duo can be processed with two alternative methods. The first method follows CAM processing or milling and only requires one single polishing stage before final placement. This method offers a restoration of around 210 MPa in just 15 minutes. Alternatively, the material can be stain/glaze fired to achieve the strength of lithium disilicate (370 MPa). Each method can be selected according to the indication and desired strength of the restoration, providing flexibility and speed.

The launch of Celtra® Press now allows laboratories to benefit from the unique microstructure of ZLS in the traditional pressing procedure.

With its strength in excess of 500 MPa, Celtra® Press creates a new benchmark in the high strength



Celtra® Press, the new pressable, zirconia-reinforced lithium silicate as well as its veneering porcelain Celtra Ceram and Celtra Press Investment is available now

glass-ceramics segment. The 10 percent zirconium oxide (already dissolved in the glass matrix) and the power firing (which in the case of monolithic restorations, forms part of the stain/glaze firing), provides this exceptionally high strength. Owing to the good surface texture, intraoral polishing is possible.


In addition to its high strength, Celtra® Press creates unmatched aesthetics. The high glass content and fine crystalline structure provides outstanding light-optical proper-

ties. Thanks to this combination of high translucency and opalescence, Celtra® Press exhibits an amazingly natural chameleon effect which allows restorations to blend into the natural dentition extremely well. During the development of Celtra® Press, a great deal of attention was paid to ensure an exact match to the VITA shade system for excellent shade accuracy and reproduction. The HT, MT and LT translucency shades are closely matched and permits users to reliably reproduce the desired degree of translucency.

Celtra® Ceram veneering porcelain is available to labs for additional customisation.

When used with the specially developed Celtra® Press Investment, only a minimal reaction layer forms during pressing which is already sandblasted off during devesting. Further pickling in acid or sandblasting is no longer required. Thanks to the precision of fit, fine and homogenous surfaces as well as "soft" devesting properties, users can work quickly and reliably.

The low viscosity of Celtra® Press provides optimum flow properties so that only one pressing sprue needs to be attached. This is applicable for the entire indication spec-

trum including up to three-unit bridgework on second bicuspids in the anterior region. Even the most delicate of structures and restoration margins are reproduced accurately. 

For more information, please contact your local Dentsply Sirona representative, or for background details on the press version of zirconia-reinforced lithium silicate please visit [www.celtra-dentsplysirona.com](http://www.celtra-dentsplysirona.com)

**Polly Rutt**  
Regional Marketing Leader  
Regional Commercial Organisation  
– EOC – MEA  
+971 5699 6052 (UAE)  
[polly.rutt@dentsplysirona.com](mailto:polly.rutt@dentsplysirona.com)



# Interdent's world of CAD/CAM technology

## By Interdent

With almost 40 years of experience, a vision to produce quality products and an environment in which the user plays the decisive role, Interdent this time presents CAD/CAM technology, which offers unlimited possibilities.

The company's vision has always been to keep track of new trends in dental care. CAD/CAM technology has been on the market for over 20 years; however, despite its initial "boom", it developed rather slowly. At the beginning, it was based on processing minor non-metal ceramic restorations, but there were problems concerning precision, speed and the choice of material available at the time. Today, the precision of gingival fit is already extremely fine, although differences remain between the systems. With adequate materials available, it is also possible to mill larger

restorations; however, there are many systems on the market that fail to provide comprehensive systems for dental laboratories. Systems are limited to milling various materials and, furthermore, many providers charge licence fees, which means an additional cost for the user along with the initial investment.

Every new technology takes time to perfect and find its way. Few years ago, Interdent paved the way for the CC POWER, CC COSMO+, CC COSMO/COSMO STAR, CC TRENDY and CC CHIC milling units, which will be available to users of various profiles. The needs of dental technicians across the world differ greatly and primarily depend on the existing capacities and development of a dental laboratory. The needs of a laboratory employing 200 people differ greatly from the needs of a laboratory employing 10 people. Since the company is focused on the international



Milling units CC POWER, CC COSMO+, CC COSMO/COSMO STAR, CC TRENDY, CC CHIC



Scanner Identica (Medit)



Wide range of discs for CAD/CAM: CoCr, Ti2, Ti5, Zr, Zr HT, Zr Smile, Zr Multicolour, wax, PMMA

market, it adopted a broad perspective during development (Fig. 1). This was the reason to make CC POWER, with its immense power of 2.5kW, available to the most demanding users, as it will be able to operate 24/7 maintaining productivity and precision, while the compact CC COSMO+ will be intended for medium-sized laboratories that will largely use the device for their own needs.

In the last few years we have also added smaller units like CC COSMO/COSMO STAR, CC TRENDY and CC CHIC to our product range which differ from each other in the way they mill (wet-dry). This allows dental technicians to mill all materials or only the ones


which are milled dry (zirconium, CoCr, wax, composite).

All milling units offer a possibility to mill discs of size fi 98mm and small blocs while CC CHIC is designed for dental clinics and therefore only mills small blocks.

Our development is focused on providing users with an excellent system that guarantees top quality and precision, is simple to use and protects users from additional costs due to licence fees. For this reason, we include in our sales program scanners from company Medit and software Exocad (Fig. 2).

Comprehensive CAD/CAM system also includes production of discs and mills for CAD/CAM. These have been

provided for many years and the satisfaction of customers is very high. (Fig. 3).

By means of the above, we took a step closer to existing and future users of CAD/CAM technology and we are happy to provide a comprehensive solution in CAD/CAM technology that features simple use, excellent technology and outstanding material. Since we believe that customer satisfaction depends not only on the quality of the product, but also on correct handling, the Interdent company reinforces everything with its PROFESSIONAL SUPPORT, which is available throughout the process, i.e. from your wish and idea for a purchase to training and rapid solutions to any problems encountered during use (Fig. 4). 

For more information please visit our web site [www.interdent.cc](http://www.interdent.cc) or contact us on e-mail [info@interdent.cc](mailto:info@interdent.cc).

**We are looking for dealers in different countries.**



Interdent CAD/CAM Team

# EYE OPENING

## Stellaris 3D

Superior CBCT for every indication

- Ready for Every Diagnosis
- Compact and Modern
- Power of Touch



Find out more on  
[www.fonadental.com](http://www.fonadental.com)

**FONA**  
CLOSER TO YOU

# Aquamarine – A new level of cutting efficiency

By FONA Dental

Introducing Aquamarine by FONA, the diode laser which allows you to work with high precision and efficiency. Thanks to its 445nm wavelength, with higher absorption in haemoglobin, cutting is quicker and requires much less power. The result is faster treatment with minimised thermal damage and increased efficiency. Soft tissue surgery is more exact and inflammation less probable thanks to the haemostasis effect of Aquamarine.

Aquamarine can be used for a variety of treatments in soft tissue sur-

gery, periodontology, endodontics and haemostasis. In addition, it can be used for single tooth whitening\* and as treatment option for a variety of indications. The built-in battery provides a mobile treatment solution for more than 1h of interrupted use.

High response touchscreen allows full overview of options and settings in 23 different languages. Aquamarine has pre-programmed range of treatments and the option to store up to 12 user settings for 2 separate users.

Sterile EndoTips and UniTips are

ready to use out of the package without need for cutting or sterilization. The user can adjust the treatment angle by bending and turning the tip in the handpiece interface. ActiveTip is an optional solution for whitening and other activation treatments.

The diode laser operates at a wavelength absorbed by the soft tissue more efficiently, resulting in more precise cutting and faster healing thus increasing patient comfort. The focused beam treats the affected area in less time also limiting overall operational time. [DTI](#)

\*Clinical trials in progress.



Aquamarine

# IDS In Cologne, 21-25th March 2017 – A great showcase for PD and the Map System!

By Produits Dentaires SA

As every 2 years, PD, Produits Dentaires SA has been exhibiting at IDS and this time, the Swiss Label Company focused on its medical device for endodontics. The accurate and reliable placement of Repair filling materials has become a key-asset in successful endo treatment and has put PD's MAP System under the spot light. MAP System is the most reliable and efficient placement system for MTA, Biodentine, Calcium Hydroxyde and other Calcium Silicates alike. It is accurate and enables to save on material cost by using

just the right quantity, dedicated to perforations, pulp capping, apexification, blood revascularization and surgery. PD organized more than a dozen workshops and lectures at its booth during IDS, introducing its rich combination of MAP products and its PD MTA White. Both Specialized endodontists and General Practitioners from many countries worldwide attended! Workshops and Conferences on the MAP System and PD MTA White are being currently organized everywhere in the Middle-East. Contact your MAP Distributor for more info! [DTI](#)



Riccardo Tonini



Mauro Amato



## PROMEDICA

Highest quality made in Germany



**Light-curing non-etch bonding system with nano-fillers**

- Reinforced with nano-fillers
- Superior physical properties
- No postoperative sensitivities
- Ideal for the use in pediatric dentistry



**Composan bio-esthetic Nano-Ceram-Technology**

- High esthetic, biocompatible, light-curing restorative composite
- Composite with technology of hybrid colloidal inorganic/organic matrix
- Composite with content of nano ceramic particles and composite
- High mechanical and physical properties
- Excellent color stability
- Composite restorative in the aesthetic zone

7 x 4 g syringes in different shades: 0, 1, 2, 3, 4, 5, 6, 7, 8, 9, 10, 11, 12, 13, 14, 15, 16, 17, 18, 19, 20, 21, 22, 23, 24, 25, 26, 27, 28, 29, 30, 31, 32, 33, 34, 35, 36, 37, 38, 39, 40, 41, 42, 43, 44, 45, 46, 47, 48, 49, 50, 51, 52, 53, 54, 55, 56, 57, 58, 59, 60, 61, 62, 63, 64, 65, 66, 67, 68, 69, 70, 71, 72, 73, 74, 75, 76, 77, 78, 79, 80, 81, 82, 83, 84, 85, 86, 87, 88, 89, 90, 91, 92, 93, 94, 95, 96, 97, 98, 99, 100



**Light-curing nano-ceram composite**

- Nano-reinforced ceramic particles
- Special resin matrix
- Significantly less free monomers
- Highly esthetic
- Universal for all cavity classes
- Comfortable handling, easy modulation
- Also available as a flowable version

**Light-curing micro-hybrid composite**

- Applicable for various indications and all cavity classes
- High translucency and a perfect colour adaption
- Polishable to a high gloss
- Excellent physical properties for durable fillings
- High filler content
- Packable consistency (also available as Composan LCM flow)

**PROMEDICA**

**Dental Material GmbH**  
 24537 Neumünster / Germany  
 Tel. +49 43 21 / 5 41 73  
 Fax +49 43 21 / 5 19 08  
 eMail info@promedica.de  
 Internet www.promedica.de



# Cervitec F survey: Results point to a well-liked product

By Ivoclar Vivadent

**SCHAAN, Liechtenstein:** In a survey recently conducted by Ivoclar Vivadent on its new protective varnish, Cervitec F, respondents commented favourably on its aesthetics, range of applications, delivery form, fluoride and chlorhexidine concentrations, and taste. Overall, the dentists reported that the significant advantage

of the combination product is that it saves time.

The survey invited dental professionals to rate the properties of the varnish, which was launched in all European markets in September 2016 and is now available in Australia and New Zealand. "Their opinion is important to us," a representative of Ivoclar told Dental Tribune Online. A

total of 279 dentists tested and commented on Cervitec F.

According to Ivoclar, more than 80 per cent of the survey participants were generally satisfied or very satisfied with the results of the varnish system, reporting that they would recommend using the product after professional teeth cleaning. Over half of the surveyed dentists also

said that they would recommend using the product during orthodontic treatment for high-risk patients or patients with motor impairments. In addition, respondents indicated that they use Cervitec F for patients with root caries, implants or erupting teeth.

Cervitec F differs owing to its innovative formulation, merging 1,400

ppm fluoride, chlorhexidine and cetylpyridinium chloride, according to the company. This means that fluoride application and bacterial control can now be achieved in one working step, the representative explained. [DT](#)

According to results from Ivoclar's recent survey of Cervitec F, the significant advantage of the combination product is that it saves time in the practice. (Photograph: Ivoclar Vivadent)



# SHOFU BLOCK HC & DISK HC

By Shofu

SHOFU BLOCK HC and SHOFU DISK HC, CAD/CAM hybrid ceramic restorative material is created for diverse patient-specific digital fabrications ranging from inlays, onlays, overlays, laminate veneers, anterior and posterior crown as well as implant supported prostheses and minimally invasive restorations. Homogeneous dispersion of novel porous micro-ceramic fillers in a resilient matrix imparts superior mechanical

properties with exceptional durability and shock resistant ability. Shofu Disk and Block HC are designed for fast and precise (dry or wet) milling into highly aesthetic, durable and shock resistant restorations that exhibit exceptional marginal adaptation and strong bond to natural tooth structure.

A class above in quality, SHOFU HC CAD / CAM restorative offers the unique flexibility of the in-office (SHOFU BLOCK HC) and in-lab



(SHOFU DISK HC) versions, enabling you to select exactly what you need for your practice. Created through a rigorous manufacturing process, it



is easy to polish to a stain resistant, naturally long-lasting lustre and allows intra-oral adjustment to be made to fine tune the restoration for

the highest level of patient comfort and satisfaction. [DT](#)

C-SILICONE IMPRESSION MATERIAL

**SPEEDEX®**

The C-Silicone with A-Silicone qualities

- 7 days dimension stability -
- Surface active -
- Moisture control -
- Optimized precision -

REINFORCED COMPOSITE BLOC FOR PERMANENT RESTORATION

**BRILLIANT Crios**

High performance – made brilliant

- High flexural strength – resistant restorations -
- Tooth-like modulus of elasticity – shock absorbing -
- Wear resistant and gentle to the antagonist -

ANALOG OR DIGITAL

