

DENTAL PROFESSIONALS ONLY

# DENTAL TRIBUNE

The World's Dental Newspaper • Middle East & Africa Edition

PUBLISHED IN DUBAI

www.dental-tribune.me

September-October 2018 | No. 5, Vol. 8

## ENDO TRIBUNE

Internal resorption treatment using MTA-based endodontic sealer

►A1-4

## LAB TRIBUNE

Sunny prospects: Using power to achieve brightness

►B1-4

## HYGIENE TRIBUNE

Brushing your teeth just got social

►C1-8

## IMPLANT TRIBUNE

Mastering the implant digital workflow

►D1-4

## ORTHO TRIBUNE

New study: 7 percent of children in orthodontic care at risk for sleep disorders

►E1-4



## Celebrating 10 years of Dental Facial Aesthetics over 6 days – Dubai Dental Week November

By Dental Tribune MEA/CAPPmea

**DUBAI, UAE:** The 2018 Dental Facial Cosmetic Conference & Exhibition will be celebrating its 10th anniversary this year on 09-10 November 2018. Total of 42 CME credits, over 38 international speakers and key opinion leaders, 27 lectures, 21 hands-

on dental training courses, 10 poster presentations and over 30 free CME sessions will take place during Dubai Dental Week (07-12 November 2018). The term "cosmetic dentistry" was invented in the 1990s, but it actually dates back to the ancient times. It is well known that wooden sticks were used to clean their teeth for beauty

and not for health reasons, in early 3000 BC.

The Middle-East's largest dental conference related to aesthetic dentistry will once again open its doors on 09 November 2018 at the InterContinental Hotel Dubai Festival City. The two day event will feature inter-

AD

active lectures, hands-on trainings, seminars, trade show exhibition and additional CME related events. Ten years together – one decade, learning through experience and exchange, our dental communities come together to contribute on the evolution of cosmetic dentistry and development within the field. Thanks to modern technologies and the fast growing evolving of the materials and techniques; cosmetic treatment from teeth whitening, laser procedures, composite fillings, dental bonding to veneers and dental implants, cosmetic dentistry is defining a new epoch.

It has been incredible to experience the growth of this conference over the past decade, to review progress and challenges in cosmetic and aesthetic dentistry. The 9th edition in 2017 concluded with a record breaking attendance which exceeded 3,000 delegates. The 10th edition will surpass the attendance as the event has become ever so popular in the Middle-East region

CAPP is very proud to be part of this progress for the last decade and to contribute with high-quality education.

We invite all dental professionals to be part of this memorable event on 09-10 November 2018 at the Intercontinental Hotel Festival City in Dubai. During the event, CAPP Den-

tal Education Academy will feature the following at the 10th Dental Facial Cosmetic Conference & Exhibition:

### Educational sessions with industry experts

Dental Hygienist Seminar (DHS)  
Poster Presentations  
Pre and post hands-on courses with industry experts  
Face-to-face appointments with suppliers of your choice  
Networking opportunities with industry peers and supplier representatives

### Topic focused dedicated trade show exhibition

Main Sponsors include Dentsply Sirona, Ivoclar Vivadent, 3M Oral Care, Colgate, Oral-B, Invisalign, 3-Shape, VITA, Coltene, Shofu, Carestream Dental, Kulzer, EMS, Mectron, Hu-Friedy and more. [DT](#)

**CAPP Events**  
The Leader in Continuing Dental Education  
Onyx Tower 2 | Office P204 & P205  
The Greens | Dubai | UAE  
P.O. Box: 450355 | Dubai | UAE  
Tel: +971 4 347 6747  
E-mail: [events@cappmea.com](mailto:events@cappmea.com)

wh.com

#patient2fan

# Researchers find possible link between bruxism and periodontitis

By DTI

**OKAYAMA, Japan:** In a recent study, researchers from Okayama University investigated whether involuntary masseter muscle activity showed any specific pattern concerning the severity of periodontitis. According to their results, after performing detailed measurements in a group of people with various degrees of periodontal disease, they found that bruxism might be related to its acuteness.

A total of 31 participants took part in the study, 16 of whom had no or mild periodontitis (NMP), with the remaining 15 having moderate to severe periodontitis (MSP). To ensure researchers were able to attain as in-depth results as possible, participants were equipped with a portable electromyography (EMG) device and monitored both day and night.

In addition to wearing the device, participants of the study were also required to keep a diary—noting ac-

tivities such as when they ate their meals, which enabled researchers analysing the data to filter out all muscular activity not related to involuntary teeth grinding. Teeth movement due to speech was filtered out by monitoring voice activity from a microphone attached to the EMG device.

According to the study's results, during both waking and sleeping hours, the duration of masseter muscle activity was significantly longer in the MSP group than in the

NMP group. However, due to oral conditions such as missing teeth or the use of removable partial dentures not being taken into account, as well as the limited capabilities of the EMG setup, researchers stated that bruxism leading to periodontitis could not be concluded.

The study, titled "Relationship between severity of periodontitis and masseter muscle activity during waking and sleeping hours", was published in the Archives of Oral Biology on 1 March 2018. [DTI](#)

## IMPRINT

**PUBLISHER/PRESIDENT/  
CHIEF EXECUTIVE OFFICER**  
Torsten R. OEMUS

**CHIEF FINANCIAL OFFICER**  
Dan WUNDERLICH

**DIRECTOR OF CONTENT**  
Claudia DÜSCHEK

**CLINICAL EDITORS**  
Nathalie SCHÜLLER  
Magda WOJTKIEWICZ

**EDITOR & SOCIAL MEDIA MANAGER**  
Monique MEHLER

**EDITORS**  
Franziska BEIER  
Brendan DAY  
Kasper MUSSCHE

**ASSISTANT & SOCIAL MEDIA MANAGER**  
Luke GRIBBLE

**COPY EDITOR**  
Ann-Katrin PAULICK  
Sabrina RAAFF

**IT & DEVELOPMENT**  
Serban VERES

**BUSINESS DEVELOPMENT & MARKETING MANAGER**  
Alyson BUCHENAU

**DIGITAL PRODUCTION MANAGER**  
Tom CARVALHO

**JUNIOR DIGITAL PRODUCTION MANAGER**  
Hannes KUSCHICK

**PROJECT MANAGER ONLINE**  
Chao TONG

**IT & DEVELOPMENT**  
Serban VERES

**GRAPHIC DESIGNER**  
Maria MACEDO

**E-LEARNING MANAGER**  
Lars HOFFMANN

**EDUCATION & EVENT MANAGER**  
Sarah SCHUBERT

**PRODUCT MANAGER SURGICAL TRIBUNE & DDS. WORLD**  
Joachim TABLER

**SALES & PRODUCTION SUPPORT**  
Puja DAYA  
Madleen ZOCH

**ACCOUNTING**  
Karen HAMATSCHEK  
Manuela HUNGER

**EXECUTIVE PRODUCER**  
Gernot MEYER

**ADVERTISING DISPOSITION**  
Marius MEZGER

**DENTAL TRIBUNE INTERNATIONAL**  
Holbeinstr. 29, 04229 Leipzig, Germany  
Tel.: +49 341 48 474 302  
Fax: +49 341 48 474 173  
www.dental-tribune.com  
info@dental-tribune.com

**DENTAL TRIBUNE ASIA PACIFIC LTD.**  
Room A, 20/F  
Harvard Commercial Building  
105-111 Thomson Road, Wanchai, HK  
Tel.: +852 3113 6177  
Fax: +852 3113 6199

**THE AMERICA, LLC**  
116 West 23rd Street, Ste. 500, New York  
N.Y. 10011, USA  
Tel.: +1 212 244 7181  
Fax: +1 212 244 7185

## DENTAL TRIBUNE MEA EDITION EDITORIAL BOARD

Dr. Aisha SULTAN ALSUWAIDI, UAE  
Prof. Paul TIPTON, UK  
Prof. Khaled BALTO, KSA  
Dr. Ninette BANDAY, UAE  
Dr. Nabeel HUMOOD ALSABEEHA, UAE  
Dr. Naif Almosa, KSA  
Dr. Mohammad AL-OBAIDA, KSA  
Dr. Meshari F. ALOTAIBI, KSA  
Dr. Jasim M. AL-SAEEDI, Oman  
Dr. Mohammed AL-DARWISH, Qatar  
Dr. Dobrina MOLLOVA, UAE  
Dr. Ahmed KAZI, UAE  
Dr. Munir SILWADI, UAE  
Dr. Khaled ABOUSEADA, KSA  
Dr. Rabih ABI NADER, UAE  
Dr. Ehab RASHED, UAE  
Aiham FARRAH, CDT, UAE  
Retty M. MATTHEW, UAE

## PARTNERS

Saudi Dental Society  
Saudi Ortho Society  
Lebanese Dental Association  
Qatar Dental Society  
Oman Dental Society  
American Academy of Implant Dentistry  
International Federation of Dental Hygienist  
British Academy of Restorative Dentistry  
British Academy of Dental Implantology

## DIRECTOR OF mCME

Dr. Dobrina MOLLOVA  
mollova@dental-tribune.me  
Tel.: +971 50 42 43072

## DIRECTOR

Tzvetan DEYANOV  
deyanov@dental-tribune.me  
Tel.: +971 55 11 28 581

## PRINTING HOUSE & DISTRIBUTION

Al Nisr Printing  
P. O. Box 6519, Dubai, UAE  
800 4585/04-4067170

©2018, Dental Tribune International GmbH. All rights reserved. Dental Tribune International makes every effort to report clinical information and manufacturer's product news accurately, but cannot assume responsibility for the validity of product claims, or for typographical errors. The publishers also do not assume responsibility for product names or claims, or statements made by advertisers. Opinions expressed by authors are their own and may not reflect those of Dental Tribune International.

# CALL FOR ABSTRACTS

DEADLINE OF SUBMISSION:  
**SEPT. 16, 2018**



الجمعية السعودية لطب الأسنان  
SAUDI DENTAL SOCIETY



# SIDC 2019

المؤتمر السعودي العالمي لطب الأسنان  
The Saudi International Dental Conference

**SCIENTIFIC PARTNERS:**






**الشركاء العلميون:**

# 12-14 JANUARY 2019

THE RITZ-CARLTON RIYADH, SAUDI ARABIA



www.SIDC.org.sa





# Solutions for better, safer, faster dental care

Dentsply and Sirona have joined forces to become the world's largest provider of professional dental solutions. Our trusted brands have empowered dental professionals to provide better, safer and faster care in all fields of dentistry for over 100 years. However, as advanced as dentistry is today, together we are committed to making it even better. Everything we do is about helping you deliver the best possible dental care, for the benefit of your patients and practice.

Find out more on  
[dentsplysirona.com](https://dentsplysirona.com)

#### Clinical Procedures

- Preventive
- Restorative
- Orthodontics
- Endodontics
- Implants
- Prosthetics

#### Platform Technologies

- CAD/CAM
- Imaging Systems
- Treatment Centers
- Instruments

THE DENTAL  
SOLUTIONS  
COMPANY™



**Dentsply  
Sirona**

# Implant-based all-ceramic restoration using 3M Impregum Penta Polyether Impression Material

By Dr. Gunnar Reich, Germany

## Open tray (pick-up) technique Initial situation

Single implant in region 15 to replace missing tooth. Patient arrived for impression taking appointment with trans-gingival healing cap. Surrounding soft tissue shows excellent healthy conditions (Fig. 1).

## Treatment

After removal of the healing cap, the impression post (Straumann implant system) for the open tray (pick-

up) technique was positioned (Fig. 2). For impression taking Impregum Penta Polyether Impression Material was selected. For the monophase technique the same material is used for tray loading and syringing the impression post. While the assistant was filling the tray, the dentist syringed the material thoroughly with the elastomer syringe (Fig. 3).

The impression was taken using a 3M ESPE Impression Tray. The perforation was made according to the individual situation (Fig. 4). The accurate impression with the

fixed impression post (Fig. 5) was then sent to the dental lab. Prior to pouring the model, the laboratory implant analog was exactly mounted (Fig. 6).

For highest esthetics, a custom-made zirconia abutment (3M Lava Plus) (Fig. 7) was delivered by the lab. On top, an individualized monolithic 3M Lava Plus Zirconia crown was placed (Fig. 8).

## Open tray (pick-up) technique

In this technique, the direct transfer coping gets "picked up" and remains

in the set impression upon removal from the mouth. Once the impression has set, the screw holding the coping on the implant is accessed through the hole above/below the implant in the open tray and unscrewed to allow removal of the impression from the mouth. Once outside of the mouth, the implant analogue is connected to the transfer coping prior to pouring the stone model.

## TIPS FOR MAKING GREAT IMPLANT IMPRESSIONS

- Support tray until impression material is sufficiently set. Stabilize the tray after seating, avoid any movements.

- Use enough material and keep the tip permanently immersed in the material during syringing to avoid air entrapment and voids.

- **Pick-up technique:** Widen implant windows in the tray to avoid tray-abutment contact.



Fig. 1: Initial situation with healing cap.



Fig. 2: Open tray impression post mounted.

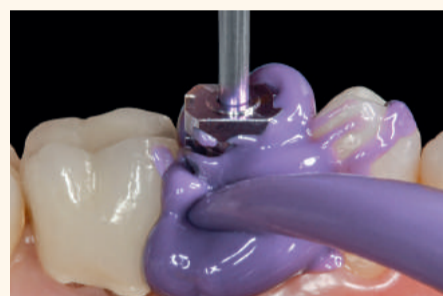


Fig. 3: Impregum Penta Polyether Material syringed around impression post (Straumann) using elastomer syringe (step 1 in monophase technique).



Fig. 4: Impression taking using Impregum Penta Polyether Material and an individualized, perforated 3M ESPE Impression Tray (step 2 in monophase technique).

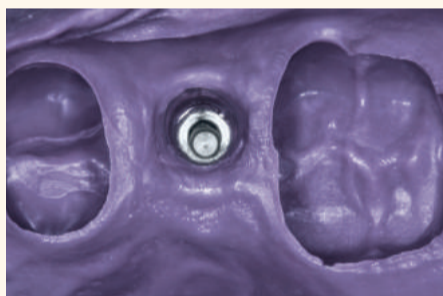


Fig. 5: Impression with fixed impression post to be sent to dental lab.

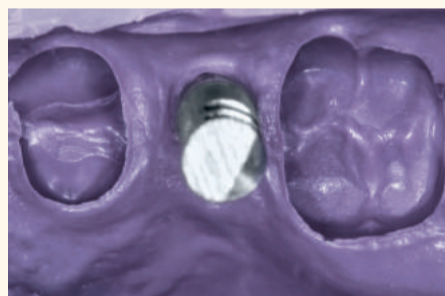


Fig. 6: Impression with mounted laboratory implant analog.

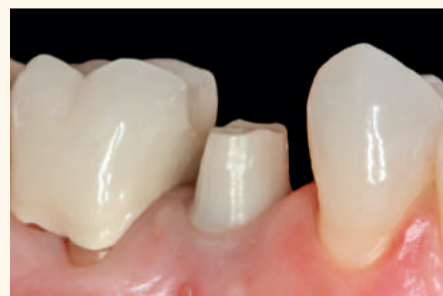


Fig. 7: Custom-made Lava Zirconia abutment.



Fig. 8: Final placement of Lava Plus Zirconia crown.

## Closed tray (snap-on) technique Initial situation

Single implant in region 15 to replace missing tooth. Patient arrived for impression taking appointment with trans-gingival healing cap. Surrounding soft tissue shows excellent healthy conditions (Fig. 1).

## Treatment

After removal of the healing cap, the corresponding impression post and the impression cap (CAMLOG implant system) for the closed tray (snap-on) technique were mounted. For impression taking Impregum Penta Polyether Impression Material was chosen since it offers dimensional accuracy and a secure impression cap fixation. The impression was taken using a regular stock tray. For the monophase technique the same material is used for tray loading and syringing the impression post. While the assistant was filling the tray, the dentist syringed the material thoroughly with the elastomer syringe (Figs. 2 and 3).

The accurate impression with the fixed impression cap (Fig. 4) was then sent to the dental lab. For highest esthetics, a veneered Lava Plus all-ceramic crown was placed on an individualized Lava Plus Zirconia abutment (Fig. 5).

## Closed tray (snap-on) technique

In this technique, the direct transfer coping "snaps-on" to the top of the implant abutment in the mouth. Once the impression has set, the coping becomes embedded in the



Fig. 1: Initial situation with healing cap (CAMLOG).



Fig. 2: Impregum Penta Polyether Material syringed around impression post using elastomer syringe (step 1 in monophase technique).



Fig. 3: Impregum Penta Polyether Material syringed around impression post.

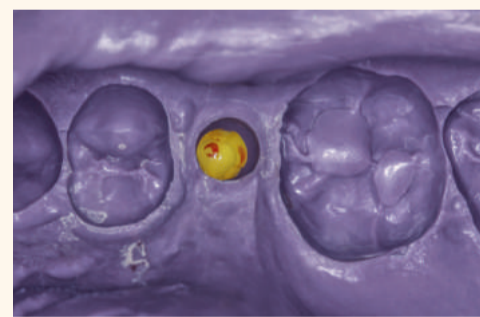


Fig. 4: Impression with fixed impression cap to be sent to dental lab.



Fig. 4: Impression with fixed impression cap to be sent to dental lab.

impression and is pulled off of the implant abutment when the set impression is removed from the mouth. Once outside of the mouth, the implant analogue is connected to the transfer coping prior to pouring the stone model. **DT**

To learn more 3M Impregum Polyether Impression Material please visit: [www.3Mae.ae/dental](http://www.3Mae.ae/dental) (Gulf countries), [www.3m.com.sa](http://www.3m.com.sa) (Saudi Arabia)

To request Pentamix 'Test Drive' or visit of 3M specialist please contact us at: [3MOralCareGulf@m3m.com](mailto:3MOralCareGulf@m3m.com)

3M, ESPE, Impregum, Lava and Penta are trademarks of 3M Company or 3M Deutschland GmbH. Used under license in Canada. All other trademarks are owned by other companies.

© 3M 2018. All rights reserved.



**Dr. Gunnar Reich**  
Munich, Germany.  
Owner of Dr. Gunnar Reich Private Dental Practice specialized in the following focus areas: aesthetic restoration and reconstruction with plastic, filling material in anterior and posterior regions, complex dental prostheses and implantology. Author of several publications in Germany and abroad.

## TIPS FOR MAKING GREAT IMPLANT IMPRESSIONS

- Support tray until impression material is sufficiently set. Stabilize the tray after seating, avoid any movements.

- Use enough material and keep the tip permanently immersed in the material during syringing to avoid air entrapment and voids.

- **Snap-on technique:** Try-in the tray prior to making impressions and ensure proper size to avoid



# Because a great-fitting restoration should never be a surprise.

When it comes to impression making, you don't have to choose between precision and ease of use. The impression procedure from 3M gives you both. It integrates products that function simply, to give you control at every step. And VPS and polyether material choices are designed to enhance your success with everyday procedures and more challenging cases. It's simply a better way to make better impressions.

## 1 Retract

3M™ Astringent Retraction Paste



## 2 Mix

3M™ Pentamix™ 3 Automatic Mixing Unit



## 3 Impress

3M™ Impregum™ Polyether Impression Material



# GUM PAROEX – professional plaque control for optimal gum health

By Sunstar Europe

The combination of Chlorhexidine Digluconate (CHX), professional reference for plaque control and Cetylpyridinium Chloride (CPC), included in GUM Paroex products, has the long-lasting ability to attack the structure of existing plaque and prevent the growth of bacteria and toxins responsible for its formation. The superior efficacy of GUM Paroex in the plaque control was proven by an independent study\* with the following results:

- GUM PAROEX 0.12% CHX + 0.05% CPC is clinically proven to have a more pronounced effect in reducing plaque (vs. CHX/ADS) and gum problems than other usual mouthrinses containing CHX (Fig. 1, Fig. 2).
- The clinical efficacy of GUM PAROEX 0.12% CHX + 0.05% CPC is significantly superior to 0.12% CHX/ALC in controlling gum problems (Fig. 1).
- 0.20% CHX/ADS efficacy is comparable to a 0.05% Sodium Fluoride mouthrinse, without any active anti-

bacterial agent (Placebo) (Fig. 1).

- GUM PAROEX 0.12% CHX + 0.05% CPC clinical efficacy in helping control gum problems is significantly superior to 0.20% CHX/ADS (Fig. 1).
- The taste of GUM PAROEX 0.12% CHX + 0.05% CPC is well-accepted and significantly better than 0.12% CHX/ALC and 0.20% CHX/ADS formulation. This promotes better patient compliance to treatment (Fig. 3).
- The staining of GUM PAROEX 0.12%

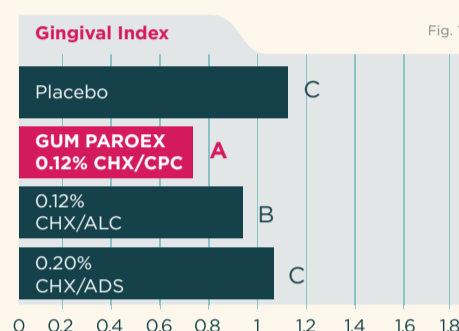
CHX + 0.05% CPC is equivalent to the staining produced by 0.12% CHX/ALC or 0.20% CHX/ADS based on subjective patient evaluation (Fig. 4).

\* Per Ramberg et al. *Effect of Chlorhexidine/Cetylpyridinium Chloride on plaque and gingivitis*: abstract ID# 182859 IADR WCPD Budapest 2013

Gingival Index (GI) - measure of peri-

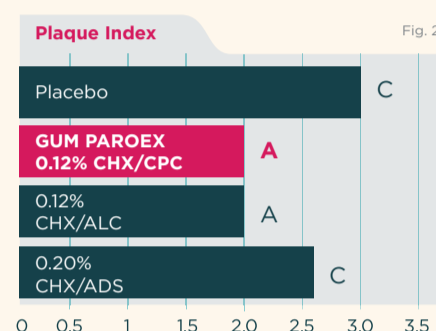
odontal disease based on the severity and location of the lesion.

Plaque Index (QHI) - an index for estimating the status of oral hygiene by measuring dental plaque that occurs in the areas adjacent to the gingival margin. <sup>DT</sup>



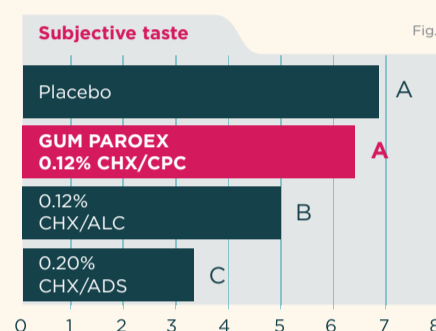
Gingival Index (GI) - measure of periodontal disease based on the severity and location of the lesion.

Fig. 1: Mean Gingival index (GI) change Day 0 - Day 21 in 17 patients. Different letters indicate statistically significant differences in the mean GI change Day 0 - Day 21 between treatment groups.



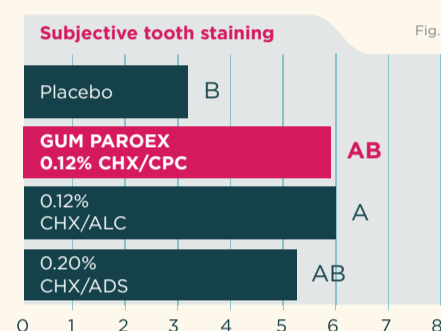
Plaque Index (QHI) - an index for estimating the status of oral hygiene by measuring dental plaque that occurs in the areas adjacent to the gingival margin.

Fig. 2: Mean QHI (plaque level) change Day 0 - Day 21 in 17 patients. Different letters indicate statistically significant differences in the mean QHI change Day 0 - Day 21 between treatment groups.



Taste acceptance (0 - Non acceptance; 8 - High acceptance)

Fig. 3: Subjective taste of the different mouth rinses evaluated by the VAS method at Day 21 on 17 patients. Different letters indicate statistically significant differences between treatment groups at Day 21.



Staining evaluation (0 - No stains; 8 - Strong stains)

Fig. 4: Subjective tooth staining of the different mouth rinses evaluated by 17 patients at Day 21. Different letters indicate statistically significant differences between treatment groups at Day 21.

## Dentsply Sirona's new VPS impression material – coming soon

By Dentsply Sirona

In keeping with a long tradition of offering meaningful innovation to the market, Dentsply Sirona will proudly introduce Aquasil Ultra+ Smart Wetting Impression Material to customers in October 2018. A completely redesigned VPS offering, Aquasil Ultra+ impression material merges state-of-the-art intraoral hydrophilicity and intraoral tear strength to deliver better-than-ever results, op-

timising performance in all areas, not just one. The '+' means clinicians now do not have to choose between wettability, tear strength, speed, and delivery options.

Aquasil Ultra+ Smart Wetting Impression Material is a final VPS impression material indicated for use in all dental impression techniques and will be available for purchase through approved Dentsply Sirona distributors.

### A No-Compromise VPS Solution

Aquasil Ultra+ provides clinicians with a no-compromise solution to their final impression needs with market leading intraoral hydrophilicity and intraoral tear strength. Historically, the market has measured impression material performance outside of the clinical context in which a dentist works. Leveraging the latest technology, Dentsply Sirona tests and publishes clinically

relevant intraoral performance to better empower clinicians to make better clinical decisions.

Aquasil Ultra+ impression material's market leading intraoral hydrophilicity is designed to help clinicians avoid trapping fluid from the moment the material is syringed into the moist, humid environment, helping clinicians alleviate voids and bubbles at or near the margin. Our extremely low contact angle—while the impression material is uncured—helps ensure an accurate impression in the presence of natural hydration, so over-desiccation of the tooth prep isn't necessary. It also delivers ideal cured film hydrophilicity, meaning the material continues to work well with moisture after it leaves your office, delivering accuracy at the lab to ensure properly fitting final restorations.

Market leading intraoral tear strength delivers a material designed to help clinicians reduce risks of tears at the margin which are the most common impression

errors labs see. It is especially useful while the material is in thin cross-sections and when being removed from the patient's mouth, as well as during pours at the lab. Our advanced formula accommodates a wider set of cases, including those using retraction paste where minimal retraction occurs.

Aquasil Ultra+ sets a standard of excellence with its ability to capture and maintain detail thanks to its intraoral performance, and combines this with a selection of clinically relevant work/set times and viscosity choices to provide a no-compromise product solution for single-unit crown cases and more. <sup>DT</sup>



Aquasil® Ultra+ Smart Wetting® Impression Material

Learn more about how Aquasil Ultra+ impression material can benefit the dental office from your local Dentsply Sirona sales representative or at [www.Aquasil-UltraPlus.com](http://www.Aquasil-UltraPlus.com)

# MIND BLOWING

## MyCrown

- Fully Integrated System
- Fast and Easy to Use
- Grow Your Clinic



Find out more on  
[www.fonadental.com](http://www.fonadental.com)

**FONA**  
CLOSER TO YOU

# An exciting year for award winning brand Beverly Hills Formula

## By Beverly Hills Formula

Despite over two decades as one of the world's top oral care brands, Beverly Hills Formula continues to expand rapidly. 2018 has been a truly tremendous year for BHF, with CEO Chris Dodd catapulting the company to ground-breaking new heights. Revolutionary new product development and a dedication to producing safe and effective teeth whitening in the home has allowed the brand to enjoy continued success across the globe, notably in the Middle East, where popularity and demand has soared.

Throughout 2017, the company focused their attention on increasing their brand presence here and merely one year later, Beverly Hills Formula have firmly cemented their position as market leaders in Oral Care. They are currently stocked in countries such as UAE, Saudi Ara-

bia, Oman, Qatar, Lebanon, Kuwait, Jordan and Iran, and dental professionals raise no qualms when recommending the products to their patients.

The brand's mantra is to always be innovators, not imitators, and 2018 saw the introduction of one of their most cutting-edge ranges yet.

The Professional White Range was showcased at 2018's International Dental Conference and Arab Dental Exhibition (AEDE) and was met with an exceptionally positive response.

Having debuted at 2017's show, there was definitely a buzz about the range this year, and dental professionals from across the globe eagerly visited the stand to find out more about the range.

The Professional White Range Black Pearl Whitening Toothpaste, Pink Pearl Sensitive Toothpaste, the award winning Precious Pearl Enam-

el remineralising toothpaste and Fresh Pearl Mouthwash. Their Precious Pearl Enamel remineralising toothpaste scooped the award for Best New Oral Beauty Product at the 2017 Pure Beauty Awards. The range has been scientifically formulated with Hydroxyapatite which has been proven to form new protective layers, giving teeth a smoother and brighter appearance by repairing micro-lesions and strengthening the enamel in teeth.

Along with this highly sought after range, the brand also showcased their first Professional Whitening Kit, which includes teeth whitening strips and a handy on the go whitening pen. The company sought to introduce a whitening kit to the market that not only offers exceptional teeth whitening, but one that is also safe to use and won't damage teeth. The kit was over two years in development. The main ingredient is

PAP – Phthalimido-Peroxy-Caproic Acid, a non-peroxide teeth whitening ingredient which effectively breaks down discolorations on the teeth, without harming the enamel of gums.

Also in their portfolio is the Perfect White Range, which has been a major success for the brand. The range includes Perfect White Black, one of the most innovative products to hit shelves. The brand were first to market with their activated charcoal toothpaste, which has been clinically proven to remove tannins and surface stains from teeth. Also in this range is Perfect White Gold, Perfect White Sensitive and their new-formulated Perfect White Optic Blue. The range also includes two mouthwashes and has been proven to remove up to 90% of surface stains.

In a highly competitive industry, Beverly Hills Formula has remained

a highly respected brand within the oral care industry. They have proved themselves as forerunners in this industry, and show no signs of giving up their place as leaders in this industry. They have proven that you don't need to be the biggest company to make the most noise.

The brand looks forward to reaching new heights in 2019, acknowledging that this may well be their biggest one yet. [DT](#)

**Beverly Hills Formula**  
Unit P1/P2 North Ring Business Park,  
Swords Road  
Dublin, 9, Ireland  
Web: [www.beverlyhillsformula.com](http://www.beverlyhillsformula.com)  
E-mail: [info@beverlyhillsformula.com](mailto:info@beverlyhillsformula.com)  
Tel: + 353 1 842 6611  
Fax: + 353 1 842 6647

# Translux Wave - For save, sustainable polymerisation

## By Kulzer

Translux Wave is a LED curing light for the polymerisation of dental materials such as adhesives and composites.

It is developed to consistently produce high-quality fillings with an optimum polymerisation depth in the 440–480 nm Wavelength range.

## Benefits at a glance

- Pen-style body: The light-weight and ergonomic pen-style design enables an effortless handling even for small hands. Furthermore, the advanced angle of the 360° rotatable light guide allows a better access to the molar regions.

- One-button operation: One convenient power/program button to choose easily between 10 and 20

seconds. LED lights indicate the program change.

- Cordless design: The cordless design gives you maximum freedom of movement.

- Reliable performance: Translux Wave comes with a strong and long life Li-ion battery. It requires very little time to recharge and the battery can be exchanged quickly and easily without tools. The built-in

diometer ensures the performance you need for the perfect restoration. Translux Wave is a state-of-the-art LED curing light to deliver an optimum polymerisation for all commercially available camphor quinone based dental materials. [DT](#)



# Ivory – The complete system for tooth isolation

## By Kulzer

We recommend Ivory Rubber Dams for absolute isolation of the treatment area. We provide Ivory Rubber Dam Clamps in a variety of sizes and shapes. With the Ivory all-in-one system, you will master practically every application, ranging from routine to challenging treatments.

## Ivory Rubber Dams

The Ivory rubber dam is manufactured from natural latex and undergoes a special washing step during the manufacturing process to reduce surface proteins. Ivory Rubber Dam has extremely high tear strength, reducing waste from tearing during

application. The Rubber Dam is thin and pliable, allowing easy placement in especially difficult areas.

## Ivory Rubber Dam Clamps

We produce the Ivory rubber dam clamps in various sizes and shapes. Each Ivory clamp is die-cut, heat treated, tempered and individually hand-set to ensure high performance. This is how we guarantee the high performance of the stainless steel clamps and confident fixation of the rubber dam.

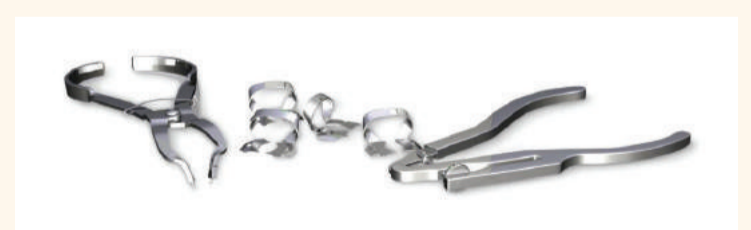
## Ivory Punch

This precision instrument is made from high quality stainless steel.

The unique floating plunger strikes all edges of the cutting disc evenly, guaranteeing a perfect, tear-resistant hole every time. The cutting disc rotates through a range of 6 hole sizes, providing the correct opening for the smallest anterior tooth to the largest molar.

## Ivory Forceps

The Ivory forceps are made from high grade stainless steel to ensure many years of use. The forceps will reach around the bow of any clamp without tilting, which is especially important when reversing a clamp. The straight head design allows easy gripping and placement of any clamp size.



## The most popular stainless steel clamps.

- Available in a multitude of sizes and shapes.
- Die-cut, heat-treated, tempered and individually hand-set to ensure high performance.
- Also available in wingless. [DT](#)

**Aboubakr Eliwa**  
Area Manager Middle East  
T: + 97 (1) 4 294 35 62 (Office)  
F: + 97 (1) 4 294 35 63  
M: +97 (1) 56506 89 76  
E: [aboubakr.eliwa@kulzer-dental.com](mailto:aboubakr.eliwa@kulzer-dental.com)  
W: [www.kulzer.com](http://www.kulzer.com)

## By Marc Berendes, CEO Kulzer

"In our system solutions, materials, technologies and services are interconnected from the very start."

Marc Berendes, born on June 19, 1970, was appointed CEO as of July 1, 2018. He has been the Kulzer CSO and member of the Management since 2016. In this function, he was

responsible for Sales, Service and Marketing. Marc Berendes has over 20 years of experience in the medical device industry. The Canadian looks back on a successful career in vari-

ous management functions in Sales, Marketing and Finance for a number of renown healthcare companies. [DT](#)





# Beverly Hills Formula

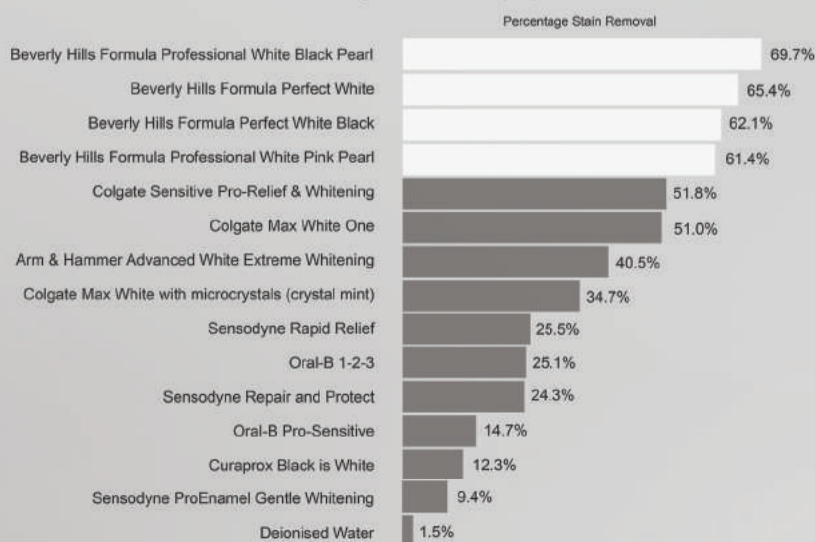


## PROFESSIONAL WHITE

## PERFECT WHITE TOOTHPASTE



Toothpaste Stain Removal  
Leading Dental School (UK)



Toothpaste Abrasivity Certificate of Analysis

