

# today



### Partial dentures just got better

The polymer frame material that's not too rigid and stiff and not too flexible either.

»page 14



### A hands-free HVE suction solution

Dr. Lee Ann Brady discusses the impact suction devices can have on your patients.

»page 30



### Compliance and CDC: Are you ready?

Dr. Howard Glazer explains how you can make sure your practice meets the guidelines.

»page 35

# Time to get going

Attendees explore the exhibit hall during the first day of the Chicago Midwinter Meeting in February 2017. (Photos/today Staff file photos)



There's a chill in the air, the end of February is approaching and there is a whole lot of people milling around the McCormick Place West Building – three very good signs that the Chicago Dental Society's annual Midwinter Meeting is back in business for another year. Its 153rd, to be exact.

And this year the Midwinter Meeting has an extra point of honor in its favor – back in September, it was named to the Trade Show Executive's Gold 100, the trade-show-industry magazine's annual listing of the previous year's top-100 shows. The Midwinter Meeting was the only dental trade show among the magazine's 2016 honorees.

\*see GOING, page 4

## America's ToothFairy launches 5th annual Smile Drive

Program in conjunction with National Children's Dental Health Month

This month, in celebration of National Children's Dental Health Month, America's ToothFairy: National Children's Oral Health Foundation invites the dental community to participate in a national program

focused on providing vital oral care products to children in need.

The America's ToothFairy Smile Drive® engages volunteers across the country in collecting oral-care products for underserved children and families and increasing oral-health awareness. Since the Smile Drive began in 2014, more than 1.2 million oral care products have been

\*see SMILE, page 4

AD

TOP QUALITY MFG. INC.

FREE GIFTS!

SEE DETAILS ON PAGE

GLOVE WORLD

BOOTH # 2404

# SHRINKAGE

Visit Booth 2807

Shrinkage  
**0.8%**



Beautiful II LS (Low-Shrink) composite provides dentists with the means to reduce polymerization shrinkage and shrinkage stress while creating predictable and functional aesthetics.

- Low volumetric shrinkage (0.8%) and shrinkage stress (2.72 MPa)
- Great strength and high wear resistance
- Tooth-like aesthetics with natural fluorescence and chameleon effect
- Polishes in an instant
- Award winning handling
- Sustained fluoride release/recharge with bioactive Giomer chemistry



# Beautiful® II LS



Shofu Dental Corporation | San Marcos, CA

SNBILLS-0417

Visit [www.shofu.com](http://www.shofu.com) | Call 800.827.4638



Let our new products tackle your toughest **SURGICAL** procedures

For Oral Surgery and Implantology



IA-400  
Digital torque wrench



Surgical straight and contra-angle  
handpieces with or without Mini LED+



**NEW** Implantmed SI-1015 with wireless foot  
pedal option, Osstell ISO option and LED  
powered motor option



**NEW**

GOING *“from page 1*

Of course, attendees don't need a magazine to tell them this meeting is the place to be. For the next few days, you will be able to learn from some of the industry's top education professionals, who will be presenting more than 200 courses, hands-on learning activities and live patient demonstrations. There also will be a special all-day track on dental assisting.

Many courses have no additional charge; however, all listed courses require a ticket for entry. The free courses are seated on a first-come, first-served basis, and for all the courses, nobody is admitted beyond the halfway point after start. To ensure having a seat, register for the course in advance and arrive with your ticket before the start time. If you don't get a ticket through registration, you can check at the classroom door to see if seats are available.

Among the many free courses are:

- “Uppers are from Mars, lowers from Venus: Clarifying overdentures” with Nader Sharifi.
- “Safety in numbers: Dental radiation dose in 2018” with Katy (Catherine) Warren and Cindy Saylor.
- “Digital dentistry: Applications & potential pitfalls” with Radi Masri.
- “Management of completely edentulous patient: Where are we headed with new technology?” with Mathew Kattadiyil.
- “Communicate with purpose: Learning to listen” with Lisa Spradley.
- “Baby steps: The infant dental exam for general dentists” with Gregory L. Psaltis.



• From left, Nicole Bernhardt, assistant; Patricia Pajac, assistant; Jessica Emery, DMD; Ashley Nelson, assistant; and Hannah Carrico, RDH, set up for a social-media photo during the 2016 Midwinter Meeting.

### Midwinter Meeting mobile app

If you haven't yet downloaded the 2018 Midwinter Meeting mobile app to your smartphone, you might want to do that now. With the app, you will be able to:

- Navigate the 170,000 square feet of exhibit space with a 2-D map and plot routes to any of the more than 700 exhibitors.
- Access your course schedule by logging in and registering your badge number with the app after you have registered for the meeting.
- Sync your profile on the app with your LinkedIn profile.
- View PDF handouts from speakers presenting more than 200 courses on topics of interest to the whole dental team, and take notes that you can email directly to yourself.

- Complete online C.E. certification.

• Access the Virtual Tradeshow Bag, which is full of special offers for attendees to take advantage of when visiting the exhibit hall.

Additional features on the app will enable attendees to network with one another, stay connected via social media channels and view favorite meeting details in one central place.

Through the process of downloading the app, logging in and updating your profile, you will automatically be entered into a raffle to win a gift card.

Names will be drawn at noon each day of the meeting. Each day's winners must be present on site at the show to accept a prize.

(Source: Chicago Dental Society)

SMILE *“from page 1*

distributed to underserved children nationwide.

“Simple necessities like a toothbrush and toothpaste are something the children we serve often do without,” said Jill Malmgren, executive director of America's ToothFairy. “Without the basic tools to maintain good dental hygiene, children often face lifelong challenges with poor dental health that negatively impact their academic performance, school attendance and overall health.”

Similar to a food drive, Smile Drive participants set up collection boxes at their business, school or other location to collect donated toothbrushes, toothpaste, floss, mouthguards and other oral-care products for children in their community. On or before March 20, World Oral Health Day, participants deliver their collected products to a local shelter, school, clinic or other non-profit organization of their choice.

Downloadable educational materials and activity sheets are available for volunteers to print and distribute

### Here in Chicago

America's ToothFairy: National Children's Oral Health Foundation Celebration of Smiles will be held again this year. The event takes place from 5:30 to 7:30 p.m. today in the Hyatt Regency McCormick Place Ballroom A. Enjoy live entertainment, silent auction items and remarks from NBA legend Muggsy Bogues.

when they deliver their donated oral care products or provide oral health education for children and their caregivers.

Those interested in participating should register at [www.SmileDrive.org](http://www.SmileDrive.org) to receive a free downloadable toolkit with resources to promote their drive. Each Smile Drive participant will be recognized in the national Smile Drive Directory and be eligible for prizes for collecting the most products.

New in 2018, dental practices and companies can maximize their participation as “Smile Drive Superstars” and receive everything they need for a successful drive. With a contribu-

tion of \$500, America's ToothFairy will provide T-shirts, wristbands, co-branded educational materials and other resources to support Smile Drive promotional efforts and assist participants with setting up a meaningful educational event for children in their community.

Learn more and register at [www.SmileDrive.org](http://www.SmileDrive.org).

### About America's ToothFairy: National Children's Oral Health Foundation

As a resource provider, America's ToothFairy: National Children's Oral Health Foundation increases access to oral health care by supporting non-profit clinics and community partners delivering education, prevention and treatment services for underserved children.

Since its inception in 2006, America's ToothFairy has distributed more than \$18 million in donated products, educational materials and financial grants to improve oral health outcomes for children and youth in need. For more information, visit [www.AmericasToothFairy.org](http://www.AmericasToothFairy.org).

## today

About  
the Publisher

Tribune America, LLC  
116 W. 23rd St., Suite 500  
New York, N.Y. 10011  
Phone: (212) 244-7181  
Fax: (212) 244-7185  
E-mail: [info@dental-tribune.com](mailto:info@dental-tribune.com)  
[www.dental-tribune.com](http://www.dental-tribune.com)

Publisher & Chairman  
Torsten Oemus  
[t.oemus@dental-tribune.com](mailto:t.oemus@dental-tribune.com)

President/Chief Executive Officer  
Eric Seid  
[e.seid@dental-tribune.com](mailto:e.seid@dental-tribune.com)

Group Editor  
Kristine Colker  
[k.colker@dental-tribune.com](mailto:k.colker@dental-tribune.com)

Managing Editor  
Fred Michmershuizen  
[f.michmershuizen@dental-tribune.com](mailto:f.michmershuizen@dental-tribune.com)

Managing Editor  
Sierra Rendon  
[s.rendon@dental-tribune.com](mailto:s.rendon@dental-tribune.com)

Managing Editor  
Robert Selleck  
[r.selleck@dental-tribune.com](mailto:r.selleck@dental-tribune.com)

Product/Account Manager  
Humberto Estrada  
[h.estrada@dental-tribune.com](mailto:h.estrada@dental-tribune.com)

Product/Account Manager  
Maria Kaiser  
[m.kaiser@dental-tribune.com](mailto:m.kaiser@dental-tribune.com)

Product/Account Manager  
Jordan McCumbee  
[j.mccumbee@dental-tribune.com](mailto:j.mccumbee@dental-tribune.com)

Client Relations Coordinator  
Leerol Colquhoun  
[l.colquhoun@dental-tribune.com](mailto:l.colquhoun@dental-tribune.com)

Education Director  
Christiane Ferret  
[c.ferret@dtstudyclub.com](mailto:c.ferret@dtstudyclub.com)

Accounting Department  
Nirmala Singh  
[n.singh@dental-tribune.com](mailto:n.singh@dental-tribune.com)

dti | Dental  
Tribune  
International

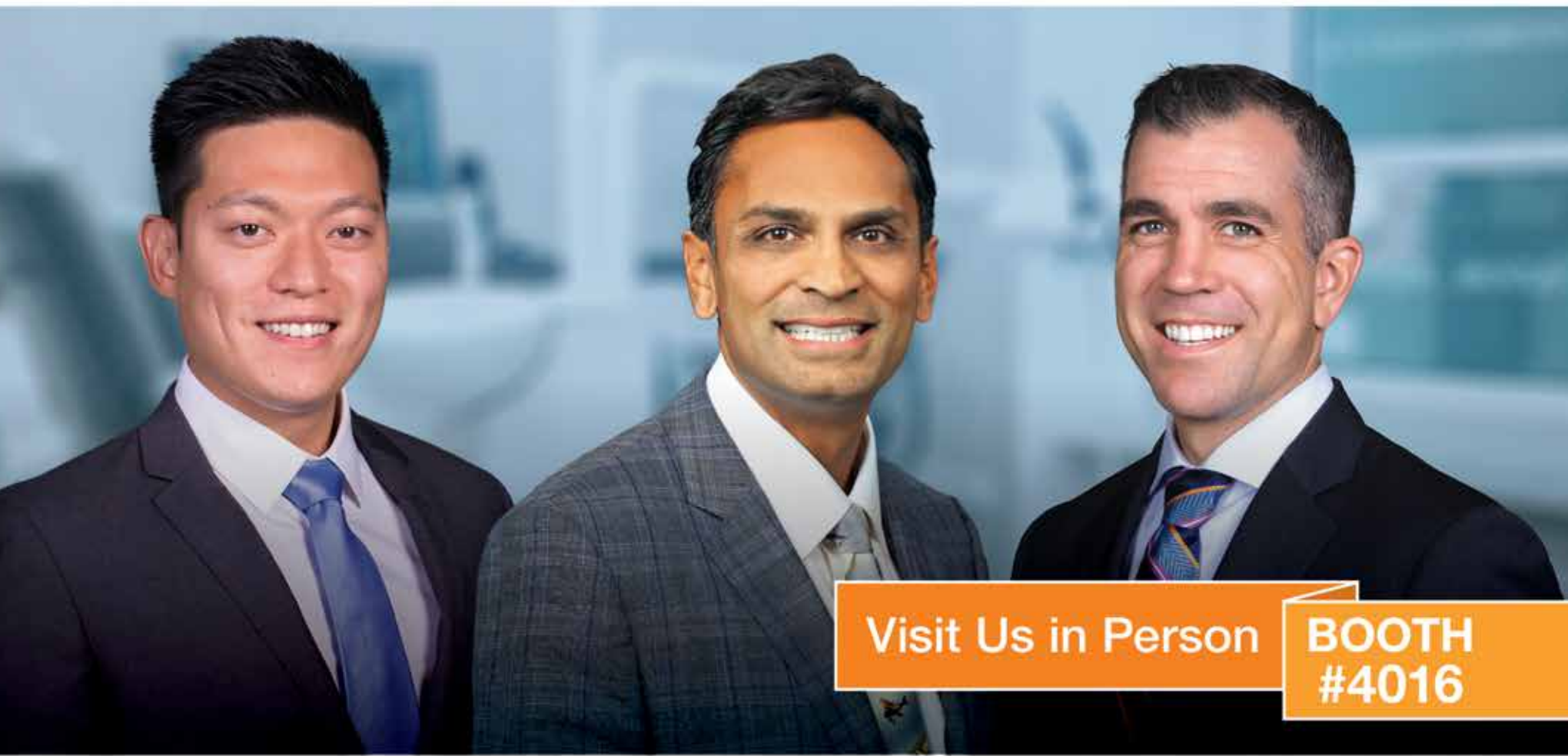
Published by Tribune America  
© 2018 Tribune America, LLC  
All rights reserved.

today Chicago Midwinter Show Dailies  
Vol. 11 appear during the 153rd  
Chicago Midwinter Meeting in  
Chicago, Illinois, Feb. 22–24, 2018.

Tribune America makes every effort to report clinical information and manufacturers' product news accurately, but cannot assume responsibility for the validity of product claims, or for typographical errors. The publishers also do not assume responsibility for product names or claims, or statements made by advertisers.

Opinions expressed by authors are their own and may not reflect those of Tribune America or Dental Tribune International.

# One-Appointment BruxZir<sup>®</sup> Crowns are Simpler Than You Think Just Ask the Experts



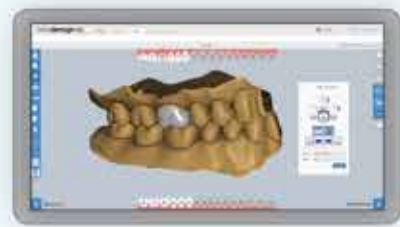
Visit Us in Person

**BOOTH  
#4016**

Drs. Justin Chi, Paresh B. Patel and Chad Duplantis are ready to answer all of your questions about one-appointment crowns and the glidewell.io<sup>™</sup> In-Office Solution.



iTero Element<sup>®</sup>  
Intraoral Scanner



fastdesign.io<sup>™</sup>  
Software



fastmill.io<sup>™</sup>  
In-Office Unit



BruxZir<sup>®</sup> NOW  
Fully-Sintered Zirconia

**FREE\*** glidewell.io<sup>™</sup> Warranty 2-Year Extension  
(a \$5,000 value) with Purchase

*\*Must purchase glidewell.io Solution and the Warranty and Licensing Package at the Chicago Dental Society Midwinter Meeting.*

**glidewell.io<sup>™</sup>**  
IN-OFFICE SOLUTION  
www.glidewell.io | 844-949-7184

# Henry Schein announces finalists for third annual Henry Schein Cares Medal

By Henry Schein Staff

■ Henry Schein Inc. has announced the nine finalists for the third annual Henry Schein Cares Medal, an award given to nonprofit organizations from the fields of oral health, animal health and medicine that demonstrate excellence in expanding access to care for the underserved.

The nine finalists (three from each field) were selected by a panel of independent judges comprised of experts from the fields of medicine, philanthropy, social entrepreneurship and business, as well as previous Henry Schein Cares Gold Medalists.

The judges will choose from those finalists a gold, silver and bronze medalist for each field. Winners will be announced later this year at Henry Schein's national sales meeting for each respective business unit. In alphabetical order, the finalists are:



(Photo/Provided by Henry Schein)

- **Oral health:** Community Treatment (Festus, Mo.); Mary's Center for Maternal and Child Care (Washington, D.C.); and My Community Dental Centers (Boyer City, Mich.)

- **Animal health:** Animal Refuge League of Greater Portland (Westbrook, Maine); Brooke USA (Lexington, Ky.); and the Massachusetts Society for the Prevention of Cruelty to Animals (Boston)

## For more information

To read more about how Henry Schein Cares is making a difference, visit the blog, [www.helpinghealthhappen.org](http://www.helpinghealthhappen.org).

- **Medicine:** Care 2 Communities (St. Paul, Minn.); Community Volunteers in Medicine (West Chester, Pa.); and The Night Ministry (Chicago)

Each medalist will receive a cash award through the support of the Henry Schein Cares Foundation in the following amounts: \$15,000 for gold, \$10,000 for silver and \$5,000 for bronze. In addition, each finalist will receive \$10,000 worth of product from Henry Schein.

Since its founding in 1932, Henry Schein has been dedicated to fulfilling its responsibilities as a corporate citizen by giving back to the industries and communities it serves. The

company created the Henry Schein Cares Medal in 2015 to honor community organizations that shared the company's commitment to serving society and whose work has been especially effective in bringing care to people and animals in need.

"Throughout our company's history, we at Henry Schein have been guided by the principle that everyone, regardless of their economic standing or personal circumstances, deserves quality health care," said Stanley M. Bergman, chairman of the board and chief executive officer of Henry Schein. "These nine organizations share that idea and embody a spirit of generosity that deserves recognition, and we are proud to honor them with the Henry Schein Cares Medal."

The Henry Schein Cares Medal is an initiative of Henry Schein Cares, the company's global corporate social responsibility program.

AD



Digital Accessories



# UNI-Verse-All

UNIVERSAL SENSOR POSITIONER

**The all-in-one sensor positioning system!**

New Uni-Verse-All is simple and easy to use. Just select your Sensor holder, snap it onto either the Anterior or Posterior/Bite Wing holder of your Uni-Verse-All, and lock and load your sensor.

Uni-Verse-All's use our Sensible's ratcheting grip assembly that adjusts to fit any size sensor. Rotate the universal Aiming Ring along the stem until you get your perfect position for a great X-Ray every time.

Uni-Verse-All's are lightweight for patient comfort, and all parts are autoclavable!

**Uni-Verse-All Kit**

2 Uni-Verse All positioners • 4 Medium size Sensible's sensor holders  
4 Large size Sensible's sensor holder • 2 Aiming Rings





Sensibles ratcheting sensor holders work with all size sensors

100 West Industry Court, Deer Park, New York 11729  
800.356.9729 | Fax: 631.242.1001 | [www.flowdental.com](http://www.flowdental.com)





Visit booth  
**#2000**  
for a sample



## Introducing Ivory® ReLeaf™

Dentistry's best hands-free suction solution.

ReLeaf ensures that every practitioner can continually provide comfort and efficiency to any dental appointment. With 280 degrees of suction, you never have to worry about suction location again.

- Hands-free, high-volume efficiency
- Soft, comfortable and universal mouthpiece for your patients
- Simple setup—connects to existing HVE system in < 60 seconds



Giving a hand to oral health.



**KULZER**  
MITSUI CHEMICALS GROUP

# Predictable and functional esthetics with low shrinkage and reduced stress

By Shofu Dental Staff

■ One of the greatest limitations in the use of resin composites is the material's shrinkage during polymerization.

This process, typically associated with dynamic development of elastic modulus, creates a network of stress cells within the resin composite and its interface with the tooth structure.

The unrelieved stress can weaken the bond between the tooth structure and the restoration. Consequently, marginal leakage, tooth fracture and a restoration's displacement may occur and further initiate the formation of secondary caries and post-operative sensitivity.

On average, the majority of resin composites in the market shrink about 2 to 5 percent.

As polymerization shrinkage cannot be completely eliminated, a plethora of techniques and protocols has been developed to conduct the manipulation of restorative procedures to minimize the effects of shrinkage and associated shrinkage stress.

Introduction of various new composite systems with low-shrink chemistry may also help overcome the problem.

A next generation of a bioactive composite indicated for all cavity classes, I–V, Beautifil II LS (Low Shrink) provides general practitioners with the means to reduce polymerization shrinkage and shrinkage stress while creating predictable and functional esthetics.

Like all restorative materials from Shofu, this novel composite incorporates the proprietary bioactive Giomer chemistry, clinically proven in eight- and 13-year recall studies to release and recharge fluoride and other beneficial ions and inhibit plaque formation to help establish a stable pH in the oral environment.

Highly filled, 83 wt percent, Beautifil II LS demonstrates excellent compressive and flexural strength (ca. 370 MPa and 120 MPa, respec-



• Functional and naturally beautiful restorations created with Beautifil II LS. (Photos/Frank J. Milnar, DDS, AAACD)



• Beautifil II LS. (Photo/Provided by Shofu Dental)

tively), maintains ideal color stability and polishes in an instant, producing a long-lasting sheen, according to the company.

Among the distinguishing features of Beautifil II LS are its low-shrink attributes. In rigorous international bench tests, this ground-breaking material

demonstrated volumetric shrinkage of 0.85 percent and polymerization shrinkage stress of 2.72 MPa, the lowest characteristics among all universal composites in the market today. Shofu attributes these outstanding results to a new proprietary monomer and high-density pre-polymerized

## Here in Chicago

Receive 6 C.E. credits by attending today's lecture from Dr. Zase on "Cosmetic Pearls for General Practitioners," being held from 8 a.m. until 3:30 p.m. Also, visit Shofu's booth, No. 2807, to experience the EyeSpecial C-III camera firsthand and connect with a team of certified dental assistants.

fillers, which also exhibit tooth-like optical properties and natural esthetics.

Available in syringes, tips and value kits, in 14 dentin and enamel shades, Beautifil II LS offers the clinicians predictable and functional esthetics with greater strength, higher wear resistance and naturally beautiful esthetics, according to the company.

## Features of Beautifil II LS (Low Shrink)

- Lowest volumetric shrinkage (0.85 percent) and shrinkage stress (2.72 MPa).
- Greater strength and higher wear resistance.
- Tooth-like esthetics with natural fluorescence and chameleon effect.
- Polishes in an instant.
- Sustained fluoride release/recharge with bioactive Giomer chemistry.



**Exclusive offer for dentists!**

**Two for the price of one**

**Booth #1447**



## **Ultaire™ AKP**

Metal-free

Tooth-supported

Bone-like

Lightweight

Comfortable

[SolvayDental360.com/Chicago](http://SolvayDental360.com/Chicago)