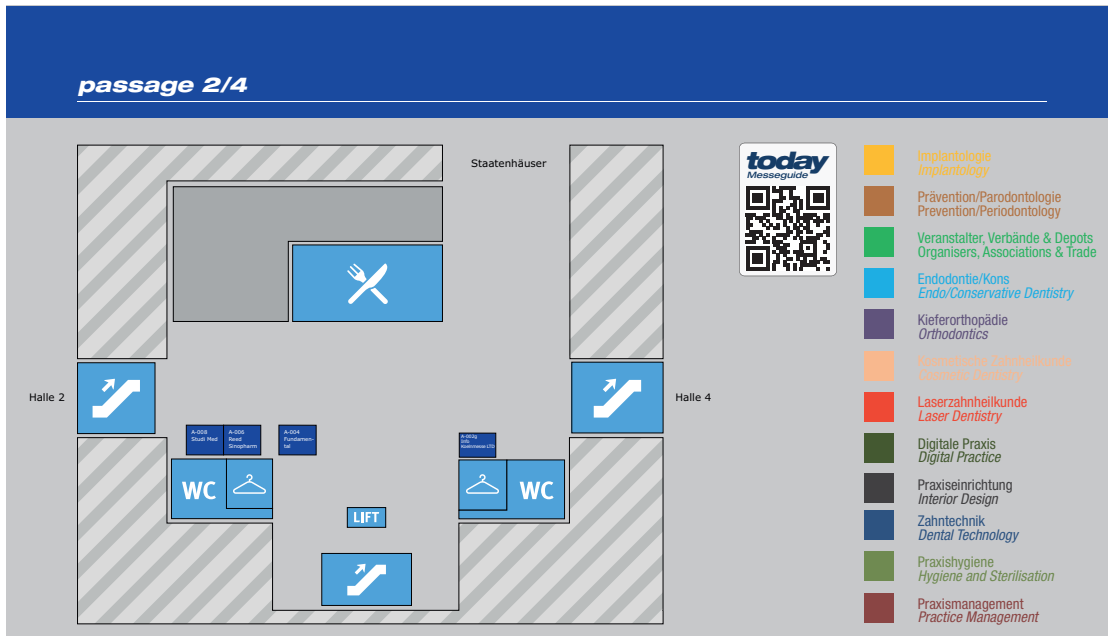


# today

**FLOOR PLAN**

38<sup>th</sup> International Dental Show Cologne • 12-16 March, 2019



**Einfach** aus  
10 Minuten Gespräch  
365 Tage Erfolg  
**machen.**

Erleben Sie effizientes Factoring so entspannt wie nie.  
Auf der IDS 2019, Halle 11.3 Stand K020/L029.

**BFS**  
health finance  
Einfach. Machen.







Praxishygiene  
Hygiene and Sterilisation  
Praxismanagement  
Practice Management

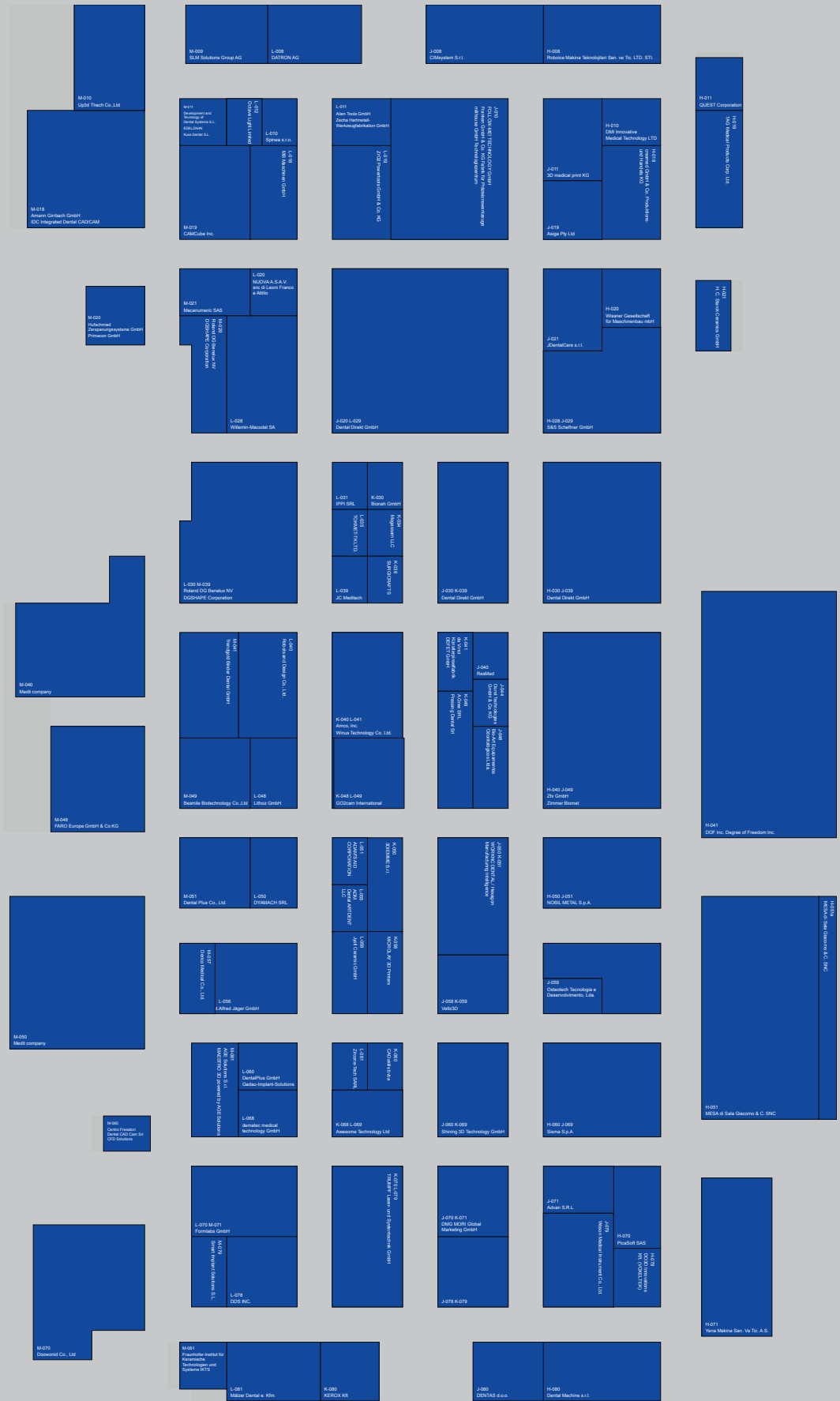
Praxisentwicklung  
Interior Design  
Zahntechnik  
Dental Technology

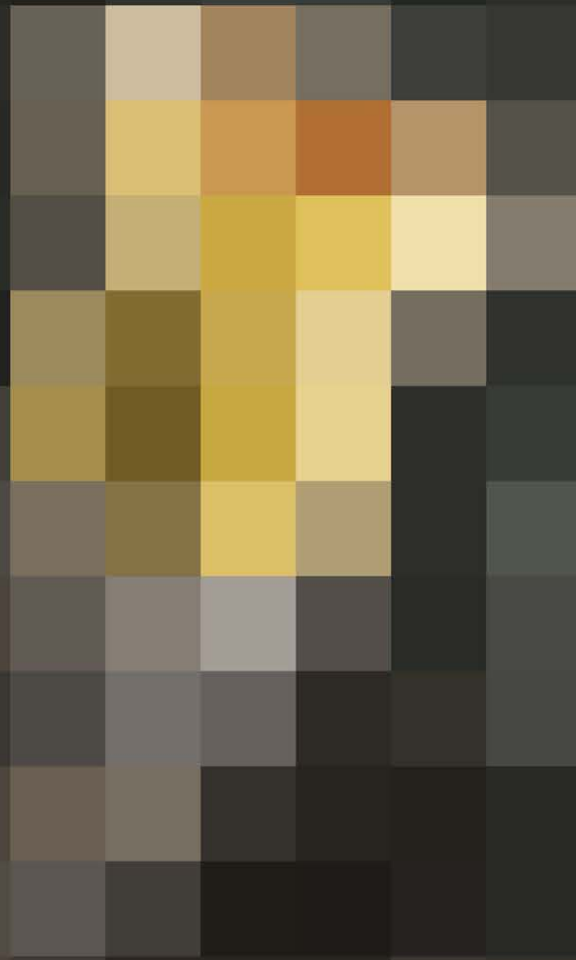
Laserzahnheilkunde  
Laser Dentistry  
Digitale Praxis  
Digital Practice

Kieferorthopädie  
Orthodontics  
Kosmetische Zahnheilkunde  
Cosmetic Dentistry

Veranstalter, Verbände & Depots  
Organisers, Associations & Trade  
Endodontie/Kons  
Endo/Conservative Dentistry

Implantologie  
Implantology  
Prävention/Periodontologie  
Prevention/Periodontology





COMING SOON

to be announced on 12 March



Praxishygiene  
Hygiene and Sterilisation  
Praxismanagement  
Practice Management

Praxisentwicklung  
Interior Design  
Zahntechnik  
Dental Technology

Laserzahnheilkunde  
Laser Dentistry  
Digitale Praxis  
Digital Practice

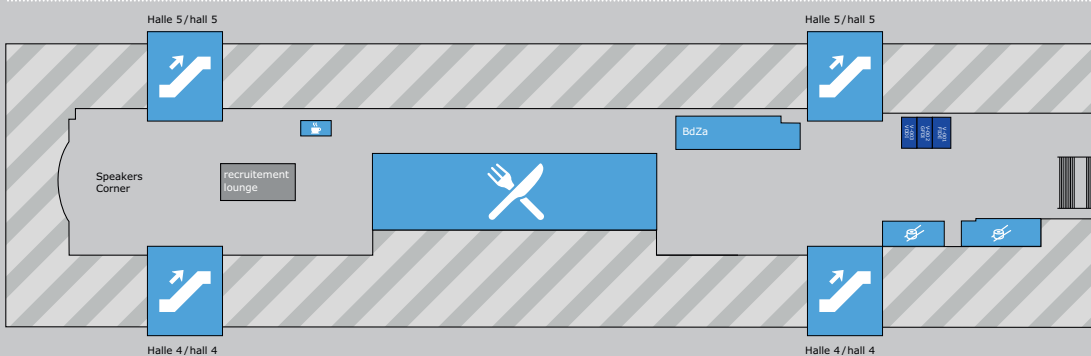
Kieferorthopädie  
Orthodontics  
Kosmetische Zahnheilkunde  
Cosmetic Dentistry

Veranstalter, Verbände & Depots  
Organisers, Associations & Trade  
Endodontie/Kons  
Endo/Conservative Dentistry

Implantologie  
Implantology  
Prävention/Periodontologie  
Prevention/Periodontology

G-001 Robert Precision Dental Instruments Co. Ltd.	F-008 SANCTUARY HEALTH SON. BHD	E-005 Begy Phy Ltd	C-008 Dentistry Simina	C-009a Dentistry Simina	C-009 Goldent Hungary Ltd.	A-008 Tosnad Dentica (untdischer Partner: Zahnart Plus GmbH)	A-011 Vericon Co. Ltd.
G-014 Ingenier-Assistent CIV GmbH	F-010 G-011 Teh. Med. Ser. in TC. A.S.	F-011 Dre. Chena Co.	E-010 Guipo Lacarta S.A.	E-011 VIMETTI SA	A-010 G-013 CORTEX Dental Implants Industries Ltd.	A-010 Dentage Dental Technologie GmbH	
G-018 PPM SRL (Fast Protes)	F-021 FAKTERIA H	F-019 Borut Co., Ltd.	E-018 RHEIN MEDICAL S.L.	E-019 Biolone Tech Co., Ltd.	C-021 Speziala KPS Design Group GmbH		
G-028 Verrini Dental Industry s.r.l.	F-022 STADY SAS	F-022 Mee Steam Metal SPC.	F-022 Mee Steam Metal SPC.	C-022 E-029 medentia medical GmbH	C-029 Dentim - Perfactory GmbH Pavlovic Dental Products	A-029 dent a pham Produktionsgesellschaft mbH (Wilmers & Pan GmbH)	
	F-028 G-029 IN TEC. IMPRINTS LTD	F-028 F-029 ESSEAME Components s.r.l. Vogel S.r.l.	E-028 F-029 ESSEAME Components s.r.l. Vogel S.r.l.	C-030 E-039 medentia medical GmbH	A-030 C-039 Eberbacher Dentwaren ED GmbH		
	F-030 G-031 Nava 2002 EOOD	E-030 F-031 ALBA-DENTAL GmbH	E-030 F-031 ALBA-DENTAL GmbH				
G-044 Chromat Dentaltechnologie gesellschaft mbH	F-041 Lilichart Sdn Bhd	E-041 Dentify GmbH	E-041 Dentify GmbH				
G-048 Prodent Italia S.r.l.	F-042 STADY SAS	E-042 Dentify GmbH	E-042 Dentify GmbH				
G-050 LASKM Ltd	F-050 G-051 Bayard International Inc.	F-050 Ortho Spin Sdn Bhd	E-050 PROJET Ltd Research and Production Company	D-051 DENTEX INTERNATIONAL CO. LTD.	C-051 Dental ACE SRL	C-052 MEDICEN Autofix Co.	A-051 BIO TECH DENTAL Concor Technologies NV Sphenax Corporation (S.S.) Ziash
G-052 Convergent Dental, Inc.	F-052 Team GmbH	F-052 Team GmbH	D-052 FAZ GmbH	D-053 HDT Co., Ltd.	C-053 Koda Co., Ltd.	B-053 EPO	B-051 DMM Co., Ltd.
G-058 Fratelli Cresta Dental Invent Co. Ltd C&V/DZ Corp.	F-058 Korabel AB	E-058 F-059 Multitech SON BHD	D-058 F-059 A103 Dental Sdn Bhd	D-059 ULT TOOTHBOND SYSTEM Sdn Bhd	C-059 TSM Corporation	A-058 B-059 Good Doctor Co., Ltd.	A-051 BIO TECH DENTAL Concor Technologies NV Sphenax Corporation (S.S.) Ziash
G-070 Nepomuk Sdn S.r.l.	F-070 G-079 MEDSON CO., LTD.	E-071 Helsen, Inc.	E-071 Helsen, Inc.	D-080 F-081 Global Dental Solution WMI	D-080 F-081 Global Dental Solution WMI	C-081 JAMES COLLE	A-081 Dentim Co., Ltd.
	F-078 Pis Tech Instruments	E-078 ONE Co., Ltd.	E-078 ONE Co., Ltd.	D-082 ACRORENT INC.	C-082 SHINJO ELECTRONICAL INC.	C-082 Bore Medical Co., Ltd.	A-081 Dentim Co., Ltd.
				D-083 JINSHI CORP.	C-083 JINSHI CORP.	B-083 World Bio Tech Co., Ltd.	A-081 Dentim Co., Ltd.
				D-084 JINSHI CORP.	C-084 JINSHI CORP.	B-084 World Bio Tech Co., Ltd.	A-081 Dentim Co., Ltd.
				D-085 JINSHI CORP.	C-085 JINSHI CORP.	B-085 World Bio Tech Co., Ltd.	A-081 Dentim Co., Ltd.
				D-086 JINSHI CORP.	C-086 JINSHI CORP.	B-086 World Bio Tech Co., Ltd.	A-081 Dentim Co., Ltd.
				D-087 JINSHI CORP.	C-087 JINSHI CORP.	B-087 World Bio Tech Co., Ltd.	A-081 Dentim Co., Ltd.
				D-088 JINSHI CORP.	C-088 JINSHI CORP.	B-088 World Bio Tech Co., Ltd.	A-081 Dentim Co., Ltd.
				D-089 JINSHI CORP.	C-089 JINSHI CORP.	B-089 World Bio Tech Co., Ltd.	A-081 Dentim Co., Ltd.
				D-090 JINSHI CORP.	C-090 JINSHI CORP.	B-090 World Bio Tech Co., Ltd.	A-081 Dentim Co., Ltd.
				D-091 JINSHI CORP.	C-091 JINSHI CORP.	B-091 World Bio Tech Co., Ltd.	A-081 Dentim Co., Ltd.
				D-092 JINSHI CORP.	C-092 JINSHI CORP.	B-092 World Bio Tech Co., Ltd.	A-081 Dentim Co., Ltd.
				D-093 JINSHI CORP.	C-093 JINSHI CORP.	B-093 World Bio Tech Co., Ltd.	A-081 Dentim Co., Ltd.
				D-094 JINSHI CORP.	C-094 JINSHI CORP.	B-094 World Bio Tech Co., Ltd.	A-081 Dentim Co., Ltd.
				D-095 JINSHI CORP.	C-095 JINSHI CORP.	B-095 World Bio Tech Co., Ltd.	A-081 Dentim Co., Ltd.
				D-096 JINSHI CORP.	C-096 JINSHI CORP.	B-096 World Bio Tech Co., Ltd.	A-081 Dentim Co., Ltd.
				D-097 JINSHI CORP.	C-097 JINSHI CORP.	B-097 World Bio Tech Co., Ltd.	A-081 Dentim Co., Ltd.
				D-098 JINSHI CORP.	C-098 JINSHI CORP.	B-098 World Bio Tech Co., Ltd.	A-081 Dentim Co., Ltd.
				D-099 JINSHI CORP.	C-099 JINSHI CORP.	B-099 World Bio Tech Co., Ltd.	A-081 Dentim Co., Ltd.
				D-100 JINSHI CORP.	C-100 JINSHI CORP.	B-100 World Bio Tech Co., Ltd.	A-081 Dentim Co., Ltd.
				D-101 JINSHI CORP.	C-101 JINSHI CORP.	B-101 World Bio Tech Co., Ltd.	A-081 Dentim Co., Ltd.
				D-102 JINSHI CORP.	C-102 JINSHI CORP.	B-102 World Bio Tech Co., Ltd.	A-081 Dentim Co., Ltd.
				D-103 JINSHI CORP.	C-103 JINSHI CORP.	B-103 World Bio Tech Co., Ltd.	A-081 Dentim Co., Ltd.
				D-104 JINSHI CORP.	C-104 JINSHI CORP.	B-104 World Bio Tech Co., Ltd.	A-081 Dentim Co., Ltd.
				D-105 JINSHI CORP.	C-105 JINSHI CORP.	B-105 World Bio Tech Co., Ltd.	A-081 Dentim Co., Ltd.
				D-106 JINSHI CORP.	C-106 JINSHI CORP.	B-106 World Bio Tech Co., Ltd.	A-081 Dentim Co., Ltd.
				D-107 JINSHI CORP.	C-107 JINSHI CORP.	B-107 World Bio Tech Co., Ltd.	A-081 Dentim Co., Ltd.
				D-108 JINSHI CORP.	C-108 JINSHI CORP.	B-108 World Bio Tech Co., Ltd.	A-081 Dentim Co., Ltd.
				D-109 JINSHI CORP.	C-109 JINSHI CORP.	B-109 World Bio Tech Co., Ltd.	A-081 Dentim Co., Ltd.
				D-110 JINSHI CORP.	C-110 JINSHI CORP.	B-110 World Bio Tech Co., Ltd.	A-081 Dentim Co., Ltd.
				D-111 JINSHI CORP.	C-111 JINSHI CORP.	B-111 World Bio Tech Co., Ltd.	A-081 Dentim Co., Ltd.
				D-112 JINSHI CORP.	C-112 JINSHI CORP.	B-112 World Bio Tech Co., Ltd.	A-081 Dentim Co., Ltd.
				D-113 JINSHI CORP.	C-113 JINSHI CORP.	B-113 World Bio Tech Co., Ltd.	A-081 Dentim Co., Ltd.
				D-114 JINSHI CORP.	C-114 JINSHI CORP.	B-114 World Bio Tech Co., Ltd.	A-081 Dentim Co., Ltd.
				D-115 JINSHI CORP.	C-115 JINSHI CORP.	B-115 World Bio Tech Co., Ltd.	A-081 Dentim Co., Ltd.
				D-116 JINSHI CORP.	C-116 JINSHI CORP.	B-116 World Bio Tech Co., Ltd.	A-081 Dentim Co., Ltd.
				D-117 JINSHI CORP.	C-117 JINSHI CORP.	B-117 World Bio Tech Co., Ltd.	A-081 Dentim Co., Ltd.
				D-118 JINSHI CORP.	C-118 JINSHI CORP.	B-118 World Bio Tech Co., Ltd.	A-081 Dentim Co., Ltd.
				D-119 JINSHI CORP.	C-119 JINSHI CORP.	B-119 World Bio Tech Co., Ltd.	A-081 Dentim Co., Ltd.
				D-120 JINSHI CORP.	C-120 JINSHI CORP.	B-120 World Bio Tech Co., Ltd.	A-081 Dentim Co., Ltd.

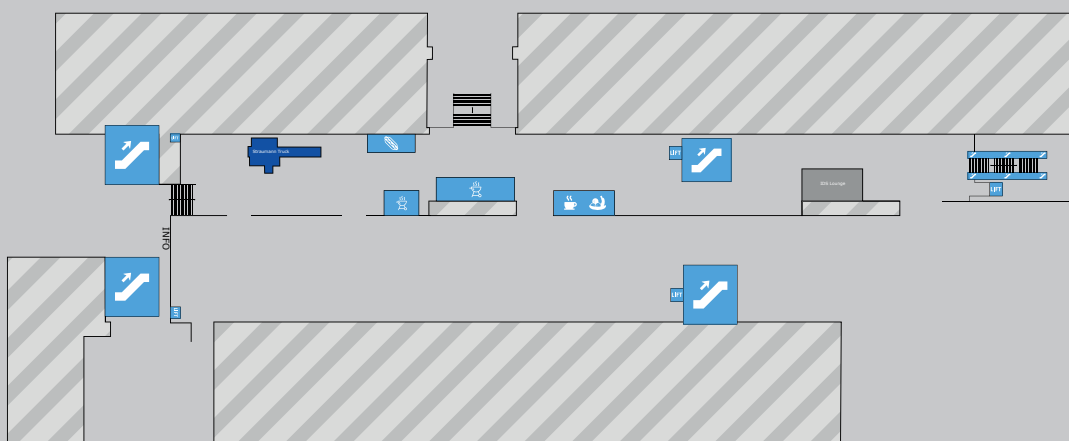
Passage 4/5



today

- Implantologie  
Implantology
- Prävention/Parodontologie  
Prevention/Periodontology
- Veranstalter, Verbände & Depots  
Organisers, Associations & Trade
- Endodontie/Kons  
Endo/Conservative Dentistry
- Kieferorthopädie  
Orthodontics
- Kosmetische Zahnheilkunde  
Cosmetic Dentistry
- Laserzahnheilkunde  
Laser Dentistry
- Digitale Praxis  
Digital Practice
- Praxiseinrichtung  
Interior Design
- Zahntechnik  
Dental Technology
- Praxishygiene  
Hygiene and Sterilisation
- Praxismanagement  
Practice Management

Boulevard Nord



AD

# INTRODUCING THE LATEST ADVANCEMENTS IN BIOACTIVE MATERIALS

The NEW Predicta™ Bioactive products are the latest examples of new cutting-edge restorative materials from Parkell; a US-based Manufacturer with over 70 years of excellence in dental material manufacturing. Predicta™ Bioactive Bulk and Predicta™ Bioactive Core are dual cure, resin composites, that release fluoride, calcium and phosphate ions to stimulate mineral apatite formation and remineralization at the material-tooth interface. Predicta Bioactive materials deliver a unique combination of physical and chemical properties. They are dimensionally stable, with excellent strength, time-efficient handling, and optical characteristics close to those of natural teeth.

## Predicta™ Bioactive Bulk

- Clinical Versatility: Indicated for Class I, II, III, IV, and V restorations.
- Unlimited depth of cure without any need for layering.
- Ideal thixotropic viscosity for easy cavity adaptation.
- Nano-filled for durability and optimized polishability for life-like aesthetic outcomes.

## Predicta™ Bioactive Core

- Contains Zirconia for enhanced cuttability.
- Versatile non-slumping formulation ideal for post cementation and core build-up.
- High flexural strength for strong, stable cores that last and resist flexing.
- Highly radiopaque for easy identification.

NEW!



## Mineral Apatite Formation

SEM Analysis of Predicta™ Restorative Surface after 28 Days.



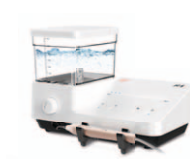
Left: Predicta Control, no SBF. Center: Predicta, 7 days in SBF. Right: Predicta, 28 days in SBF. SEM images courtesy of Håkan Engqvist, Uppsala University, Sweden.

To learn more, visit Parkell at the DirectaDentalGroup Stand. Hall: 11.3 Stand K040-L049

# WHAT HAVE WE DONE IN THE PAST 30 YEARS?

One of **The Best in Global Ultrasonic Scaler Sales**  
 One of **The Best in Global Piezo Surgery Sales**  
 One of **The Best in Global Curing Light Sales**

## Perio Series


 Periodontal Treatment Device **PT 3**

 Periodontal Treatment Device **PT 5**

 Ultrasonic + Air **PT-A**

## Surgery Series


 Piezo Surgery **Surgery-X**

 Implant Motor **Planter**

 Laser **LX16**

## Ultrasonic Scaler


 Ultrasonic Scaler **D600**

 Ultrasonic Scaler **U600**

 Ultrasonic Scaler **S6**

 Ultrasonic Scaler **U6**

## Endo Series


 Endo Motor **Endo Radar**

 Apex Locator **WOODPEX III Plus**

 Obturation System **Fi-P Fi-G**

 Activator **Endo 1**

## Restoration Series


 Curing light **B-Cure**

 Curing light **X-Cure**

 Curing light **iLed**

 Curing light **O-Light**

 High-Speed Handpiece **HP33**

*We are Woodpecker We are creating future . . . . .*

400+ employees, 100+ R&D engineers

We have applied for 364 patents, among which 78 invention patents

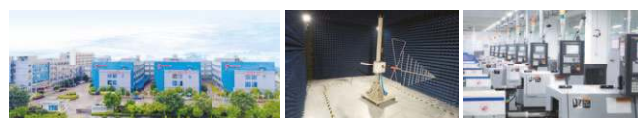
Existing 67,518m<sup>2</sup> plant, 100,510m<sup>2</sup> plant under construction

Invest 29.85 million dollars to establish CNC Centers

Invest 5.37 million dollars to establish Dental Professional Laboratory.

Our products are exported to 137 countries and areas.

Automated machines, standardized production.



Woodpecker factory

EMC Tester system

Advanced processing equipment in dental industry

Import processing and testing machine from Germany, Swiss and Japan. Each of the core components of Woodpecker products were produced by the machines that costs more than half million dollars.





1<sup>st</sup> Brushless

## ENDO MOTOR

by Woodpecker

Super mini head & Slim neck  
 Stronger power  
 Precise rotation  
 Lower noise  
 Balanced Weight

