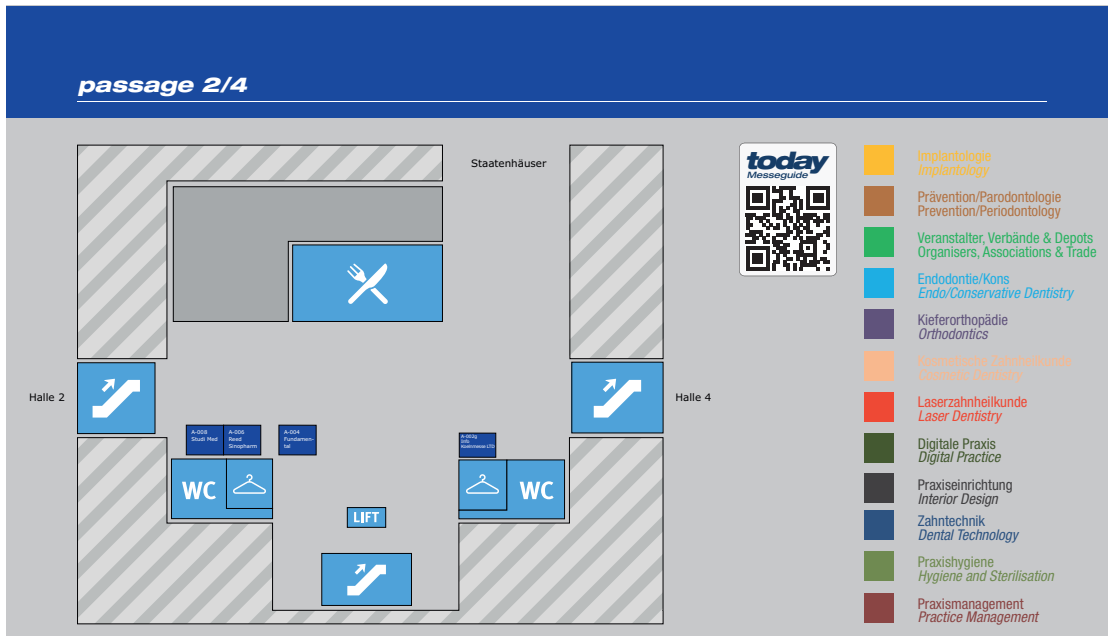


today

FLOOR PLAN

38th International Dental Show Cologne • 12-16 March, 2019



Einfach aus
10 Minuten Gespräch
365 Tage Erfolg
machen.

Erleben Sie effizientes Factoring so entspannt wie nie.
Auf der IDS 2019, Halle 11.3 Stand K020/L029.

BFS
health finance
Einfach. Machen.



Praxishygiene
Hygiene and Sterilisation
Praxismanagement
Practice Management

Praxisneinrichtung
Interior Design
Zahntechnik
Dental Technology

Laserzahnheilkunde
Laser Dentistry
Digitale Praxis
Digital Practice

Kieferorthopädie
Orthodontics
Konservative Zahnheilkunde
Conservative Dentistry

Veranstalter, Verbände & Depots
Organisers, Associations & Trade
Endodontie/Kons
Endo/Conservative Dentistry

Implantologie
Implantology
Prävention/Parodontologie
Prevention/Periodontology

today Trend Index

G-000 Zaner Dental Company	G-001 Dixux Wipac Apoth. Tc. Ltd.	F-000 OSD Europe Lyon, SA	F-001 TOSCOGOLD Co. Ltd.	E-000 CRUKEL	G-002 Korea Dental Solution Co., Ltd.	F-002 Conemed Co., Ltd.	E-010 E-011 Frank Dental GmbH	E-012 Trelacher Helmstedt AG	D-012 Xiral Systems GmbH & Co. KG	C-010 D-011 ELSDENT	C-012 D-012 Dentech Corporation	B-010 C-010 DSDO Europe	B-012 American Orthodontics GmbH	A-010 SUN Implant System	A-011 SUN Implant System	A-012 Parosac Dental Co. Ltd.	A-013 JAM International GmbH	A-014 MediLab Inc.	A-015 MediLab Inc.	A-016 MediLab Inc.	A-017 MediLab Inc.	A-018 MediLab Inc.	A-019 MediLab Inc.	A-020 MediLab Inc.	A-021 MediLab Inc.	A-022 MediLab Inc.	A-023 MediLab Inc.	A-024 MediLab Inc.	A-025 MediLab Inc.	A-026 MediLab Inc.	A-027 MediLab Inc.	A-028 MediLab Inc.	A-029 MediLab Inc.	A-030 MediLab Inc.	A-031 MediLab Inc.	A-032 MediLab Inc.	A-033 MediLab Inc.	A-034 MediLab Inc.	A-035 MediLab Inc.	A-036 MediLab Inc.	A-037 MediLab Inc.	A-038 MediLab Inc.	A-039 MediLab Inc.	A-040 MediLab Inc.	A-041 MediLab Inc.	A-042 MediLab Inc.	A-043 MediLab Inc.	A-044 MediLab Inc.	A-045 MediLab Inc.	A-046 MediLab Inc.	A-047 MediLab Inc.	A-048 MediLab Inc.	A-049 MediLab Inc.	A-050 MediLab Inc.	A-051 MediLab Inc.	A-052 MediLab Inc.	A-053 MediLab Inc.	A-054 MediLab Inc.	A-055 MediLab Inc.	A-056 MediLab Inc.	A-057 MediLab Inc.	A-058 MediLab Inc.	A-059 MediLab Inc.	A-060 MediLab Inc.	A-061 MediLab Inc.	A-062 MediLab Inc.	A-063 MediLab Inc.	A-064 MediLab Inc.	A-065 MediLab Inc.	A-066 MediLab Inc.	A-067 MediLab Inc.	A-068 MediLab Inc.	A-069 MediLab Inc.	A-070 MediLab Inc.	A-071 MediLab Inc.	A-072 MediLab Inc.	A-073 MediLab Inc.	A-074 MediLab Inc.	A-075 MediLab Inc.	A-076 MediLab Inc.	A-077 MediLab Inc.	A-078 MediLab Inc.	A-079 MediLab Inc.	A-080 MediLab Inc.	A-081 MediLab Inc.	A-082 MediLab Inc.	A-083 MediLab Inc.	A-084 MediLab Inc.	A-085 MediLab Inc.	A-086 MediLab Inc.	A-087 MediLab Inc.	A-088 MediLab Inc.	A-089 MediLab Inc.	A-090 MediLab Inc.	A-091 MediLab Inc.	A-092 MediLab Inc.	A-093 MediLab Inc.	A-094 MediLab Inc.	A-095 MediLab Inc.	A-096 MediLab Inc.	A-097 MediLab Inc.	A-098 MediLab Inc.	A-099 MediLab Inc.	A-100 MediLab Inc.
-------------------------------	---	---------------------------------	-----------------------------	-----------------	--	----------------------------	----------------------------------	------------------------------------	---	------------------------	------------------------------------	----------------------------	--	-----------------------------	-----------------------------	----------------------------------	---------------------------------	-----------------------	-----------------------	-----------------------	-----------------------	-----------------------	-----------------------	-----------------------	-----------------------	-----------------------	-----------------------	-----------------------	-----------------------	-----------------------	-----------------------	-----------------------	-----------------------	-----------------------	-----------------------	-----------------------	-----------------------	-----------------------	-----------------------	-----------------------	-----------------------	-----------------------	-----------------------	-----------------------	-----------------------	-----------------------	-----------------------	-----------------------	-----------------------	-----------------------	-----------------------	-----------------------	-----------------------	-----------------------	-----------------------	-----------------------	-----------------------	-----------------------	-----------------------	-----------------------	-----------------------	-----------------------	-----------------------	-----------------------	-----------------------	-----------------------	-----------------------	-----------------------	-----------------------	-----------------------	-----------------------	-----------------------	-----------------------	-----------------------	-----------------------	-----------------------	-----------------------	-----------------------	-----------------------	-----------------------	-----------------------	-----------------------	-----------------------	-----------------------	-----------------------	-----------------------	-----------------------	-----------------------	-----------------------	-----------------------	-----------------------	-----------------------	-----------------------	-----------------------	-----------------------	-----------------------	-----------------------	-----------------------	-----------------------	-----------------------	-----------------------	-----------------------	-----------------------	-----------------------

Rechtssichere Wasserhygiene

Main exhibition hall floor plan grid with various booth numbers and company names.



today Trend Index

- Implantologie Implantology
Prävention/Parodontologie Prevention/Periodontology
Veranstalter, Verbände & Depots Organisers, Associations & Trade
Endodontie/Kons Endo/Conservative Dentistry
Kieferorthopädie Orthodontics
Kosmetische Zahnheilkunde Cosmetic Dentistry
Laserrahneilkunde Laser Dentistry
Digitale Praxis Digital Practice
Praxisrichtung Interior Design
Zahntechnik Dental Technology
Praxishygiene Hygiene and Sterilisation
Praxismanagement Practice Management



Praxishygiene
Hygiene and Sterilisation
Praxismanagement
Practice Management

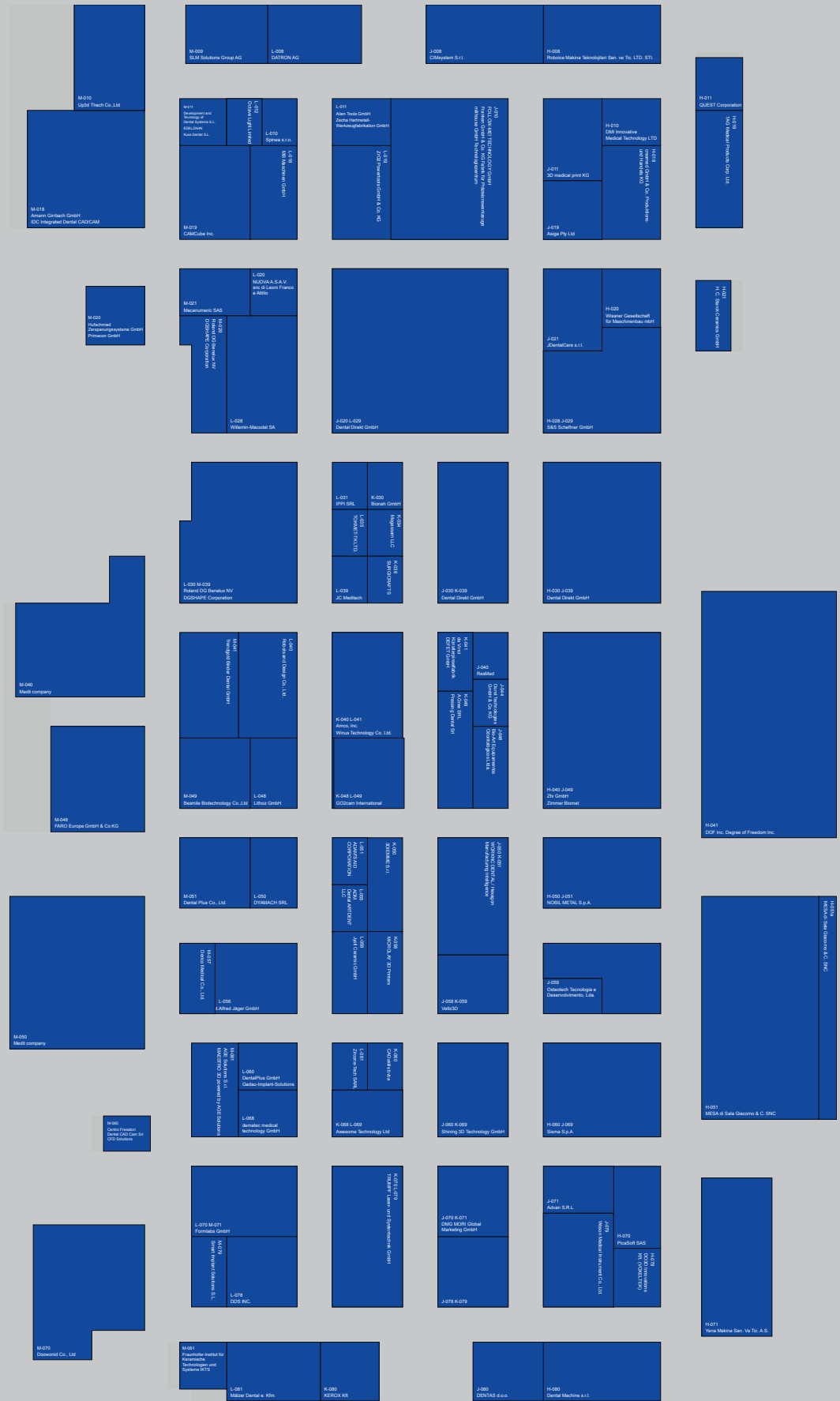
Praxisentwicklung
Interior Design
Zahntechnik
Dental Technology

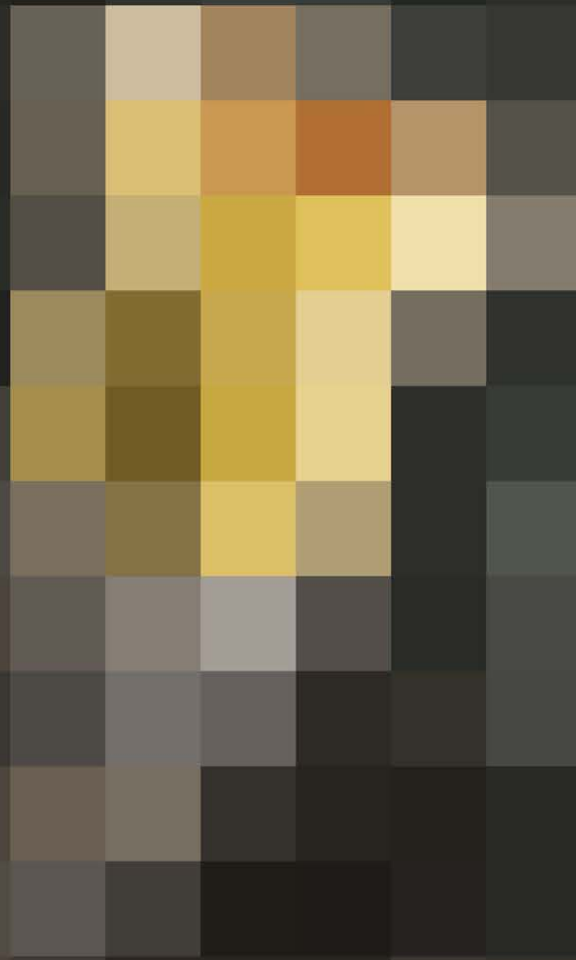
Laserzahnkunde
Laser Dentistry
Digitale Praxis
Digital Practice

Kieferorthopädie
Orthodontics
Kosmetische Zahnkunde
Cosmetic Dentistry

Veranstalter, Verbände & Depots
Organisers, Associations & Trade
Endodontie/Kons
Endo/Conservative Dentistry

Implantologie
Implantology
Prävention/Periodontologie
Prevention/Periodontology

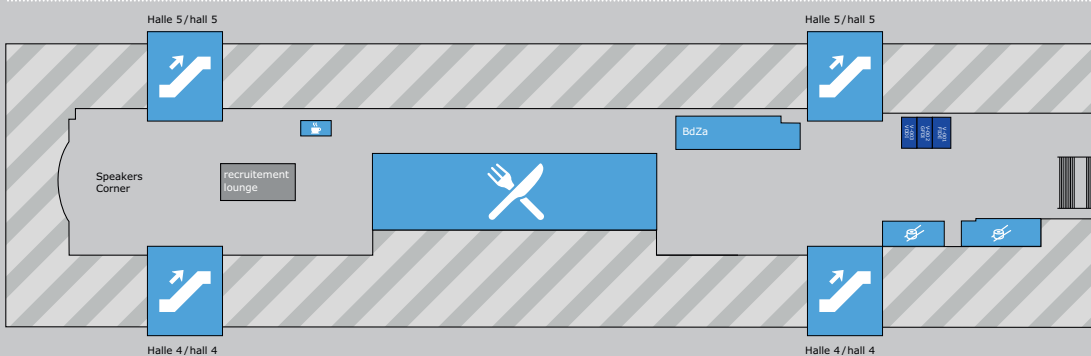




COMING SOON

to be announced on 12 March

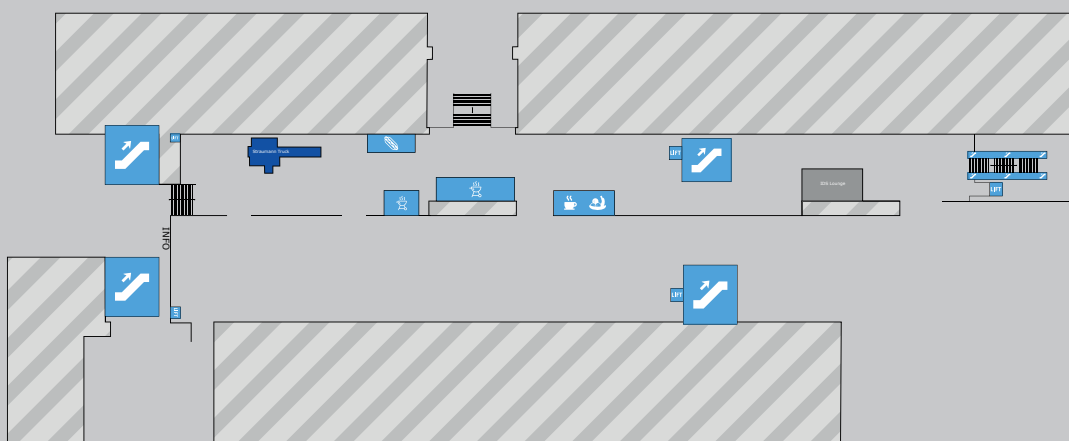
Passage 4/5



today

- Implantologie
Implantology
- Prävention/Parodontologie
Prevention/Periodontology
- Veranstalter, Verbände & Depots
Organisers, Associations & Trade
- Endodontie/Kons
Endo/Conservative Dentistry
- Kieferorthopädie
Orthodontics
- Kosmetische Zahnheilkunde
Cosmetic Dentistry
- Laserzahnheilkunde
Laser Dentistry
- Digitale Praxis
Digital Practice
- Praxiseinrichtung
Interior Design
- Zahntechnik
Dental Technology
- Praxishygiene
Hygiene and Sterilisation
- Praxismanagement
Practice Management

Boulevard Nord



AD

INTRODUCING THE LATEST ADVANCEMENTS IN BIOACTIVE MATERIALS

The NEW Predicta™ Bioactive products are the latest examples of new cutting-edge restorative materials from Parkell; a US-based Manufacturer with over 70 years of excellence in dental material manufacturing. Predicta™ Bioactive Bulk and Predicta™ Bioactive Core are dual cure, resin composites, that release fluoride, calcium and phosphate ions to stimulate mineral apatite formation and remineralization at the material-tooth interface. Predicta Bioactive materials deliver a unique combination of physical and chemical properties. They are dimensionally stable, with excellent strength, time-efficient handling, and optical characteristics close to those of natural teeth.

Predicta™ Bioactive Bulk

- Clinical Versatility: Indicated for Class I, II, III, IV, and V restorations.
- Unlimited depth of cure without any need for layering.
- Ideal thixotropic viscosity for easy cavity adaptation.
- Nano-filled for durability and optimized polishability for life-like aesthetic outcomes.

Predicta™ Bioactive Core

- Contains Zirconia for enhanced cuttability.
- Versatile non-slumping formulation ideal for post cementation and core build-up.
- High flexural strength for strong, stable cores that last and resist flexing.
- Highly radiopaque for easy identification.

NEW!



Mineral Apatite Formation

SEM Analysis of Predicta™ Restorative Surface after 28 Days.



Left: Predicta Control, no SBF. Center: Predicta, 7 days in SBF. Right: Predicta, 28 days in SBF. SEM images courtesy of Håkan Engqvist, Uppsala University, Sweden.

To learn more, visit Parkell at the DirectaDentalGroup Stand. Hall: 11.3 Stand K040-L049

WHAT HAVE WE DONE IN THE PAST 30 YEARS?

One of **The Best in Global Ultrasonic Scaler Sales**
 One of **The Best in Global Piezo Surgery Sales**
 One of **The Best in Global Curing Light Sales**

Perio Series



Periodontal Treatment Device PT 3



Periodontal Treatment Device PT 5



Ultrasonic + Air PT-A

Surgery Series



Piezo Surgery Surgery-X



Implant Motor Planter



Laser LX16

Ultrasonic Scaler



Ultrasonic Scaler D600



Ultrasonic Scaler U600



Ultrasonic Scaler S6



Ultrasonic Scaler U6

Endo Series



Endo Motor Endo Radar



Apex Locator WOODPEX III Plus



Obturation System Fi-P Fi-G



Activator Endo 1

Restoration Series



Curing light B-Cure



Curing light X-Cure



Curing light iLed



Curing light O-Light



High-Speed Handpiece HP33

We are Woodpecker We are creating future

400+ employees, 100+ R&D engineers

We have applied for 364 patents, among which 78 invention patents

Existing 67,518m² plant, 100,510m² plant under construction

Invest 29.85 million dollars to establish CNC Centers

Invest 5.37 million dollars to establish Dental Professional Laboratory.

Our products are exported to 137 countries and areas.

Automated machines, standardized production.



Woodpecker factory



EMC Tester system



Advanced processing equipment in dental industry

Import processing and testing machine from Germany, Swiss and Japan. Each of the core components of Woodpecker products were produced by the machines that costs more than half million dollars.



1st Brushless

ENDO MOTOR

by Woodpecker

Super mini head & Slim neck
 Stronger power
 Precise rotation
 Lower noise
 Balanced Weight

