

## INDUSTRY CLINICAL

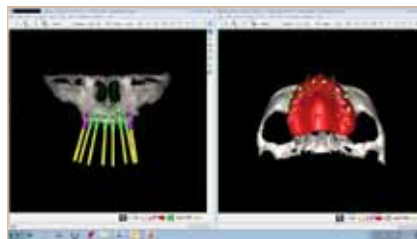


Fig. 1: Preoperative SimPlant planning showing the scan prosthesis.

## Immediate restoration in the fully edentulous maxilla region

By Max J. Cohen, DDS,

This clinical case required optimal implant placement based upon a restoratively driven treatment plan and guided surgery. To achieve this goal, we made use of CT scans, SimPlant planning software, the new Zimmer guided surgery instrumentation and the new Materialise Dental Immediate Smile model.

The patient was a 49-year-old white female in good health, completely edentulous in the maxilla and wearing a complete upper denture. On the lower, she wore an implant-retained overdenture.

The planning phase for the case began with a CT scan utilizing the i-Cat and the Materialise Dental Dual Scan protocol. The patient's existing denture was transformed into a scan prosthesis by gluing eight Dual Scan Markers (Materialise Dental) on the surface. A radiolucent bite index was made to secure the prosthesis in the correct position.

The patient was scanned in the i-Cat 17-19 while wearing the convert prosthesis and the bite index. In a second scan, the convert prosthesis was scanned alone. The resulting CT data were loaded into SimPlant, and the scan prosthesis was superimposed upon the study using the SimPlant Dual Scan wizard (Fig. 1).

Using SimPlant, the optimum implant positions were determined based upon available bone, a minimum of 3 mm between implants, and the design of the final restoration (Fig. 2). The resulting treatment plan was submitted to Materialise Dental for fabrication of a SurgiGuide and a Materialise Dental Immediate Smile model.

→ [page 11B](#)

# International Implantology Week



Dentists from 28 different countries attend a lecture during a week-long continuing education program at NYU College of Dentistry. (Photos/Fred Michmershuizen, Dental Tribune)

## Dentists from around the world attend New York University College of Dentistry event

By Fred Michmershuizen, Online Editor

Approximately 500 dentists from 28 countries gathered at New York University College of Dentistry March 14 to 18 for International Implantology Week, a continuing education event offering experienced practitioners of dental implantology the opportunity to further their knowledge and expertise. The program was organized and hosted by Zimmer Dental and NYU College of Dentistry.

"It is an exciting time to be a dentist and an implantologist," said Dr. Hom-Lay Wang, who served as clinical chair for the week-long, interactive event. "Dental implantology stands poised on a threshold of rapid change and essential innovation, and

treatment modalities continue to evolve and upgrade. For us to ensure future success and the betterment of our patients, it is imperative to stay at the forefront of cutting-edge techniques and technologies through symposiums such as this one."

The specific topics, which were presented by some of the world's leading experts, included effective case management, esthetics, traditional implants vs. one-piece implants, sinus lift procedures and recent technological innovations including trabecular metal and vertical bone techniques and procedures — in short, all of the kinds of issues intended to keep participants on the forefront.



Dr. Hom-Lay Wang, clinical chair of International Implantology Week, welcomes attendees from around the world.

→ [page 2B](#)

← IT page 1B

Dr. Philippe Russe offered the keynote lecture on navigating narrow spaces in the esthetic zone. Other lecture highlights included Dr. Zeev Ormainer on the Tapered Screw-Vent Implant; Dr. Maurizio Tonetti on mucogingival tissue management in periodontal and implant therapy; Dr. Richard Kraut's presentation on vertical bone augmentation; and Wang's presentation on recent advances in sinus lift augmentation.

Also speaking were Dr. Joseph Massad on treatment options for the edentulous patient; Dr. Henry Salama on abutment protocol in implant therapy; Dr. Edgard El Chaar on advanced socket-preservation techniques and materials; Dr. Katya Archambault on advanced tissue grafting techniques; Dr. Paul Petrungaro on localized ridge augmentation with allogenic block grafts; and Dr. Markus Schlee on early clinical experience with a new porous material.

The audience for the event was composed primarily of practicing clinicians from around the world — those who already possessed established competencies in implantology but who were seeking to further their skills and expertise.

Of course, no advancements in the ability to treat patients would be possible without the best possible equipment. That's why, between lectures, meeting participants visited tables in the lobby displaying Zimmer Dental's various offerings, which cover the gamut from surgical products to regenerative materials to restorative tools.

According to Michael Collins, vice president of research, development and education for Zimmer Dental, the symposium offered participants an opportunity to experience new products and see where things are going. Even more importantly, he said, the week offered attendees the opportunity to stay on the cutting edge.

"If it weren't for International Implantology Week, it would be impossible to find this kind of education all in one place," Collins said.

Wang said that in addition to offering an unparalleled learning opportunity, the event also offered attendees the chance to expand their horizons by making global contacts.

Attendees were able to bond with each other during breaks for meals, and during the welcome reception and opening dinner at the Sheraton Ballroom.

The week concluded with a closing dinner at Brasserie 8 ½ in Midtown Manhattan. IT



Between sessions at International Implantology Week, meeting attendees were able to view exhibits of products available from Zimmer Dental.



Dr. Philippe Russe presents his keynote lecture on navigating narrow spaces in the esthetic zone.



Meeting attendees network with colleagues between lectures.

## IMPLANT TRIBUNE

The World's Newspaper of Implantology - U.S. Edition

### Publisher & Chairman

Torsten Oemus  
t.oemus@dental-tribune.com

### Chief Operating Officer

Eric Seid  
e.seid@dental-tribune.com

### Group Editor & Designer

Robin Goodman  
r.goodman@dental-tribune.com

### Editor in Chief

Sascha A. Jovanovic, DDS, MS  
sascha@jovanoviconline.com

### Managing Editor/Designer

Implant, Endo & Lab Tribunes  
Sierra Rendon  
s.rendon@dental-tribune.com

### Managing Editor/Designer

Ortho Tribune & Show Dailies  
Kristine Colker  
k.colker@dental-tribune.com

### Online Editor

Fred Michmershuizen  
f.michmershuizen@dental-tribune.com

### Account Manager

Humberto Estrada  
h.estrada@dental-tribune.com

### Marketing Manager

Anna Wlodarczyk  
a.wlodarczyk@dental-tribune.com

### Marketing & Sales Assistant

Lorrie Young  
l.young@dental-tribune.com

### C.E. Manager

Julia Wehkamp  
j.wehkamp@dental-tribune.com

### International C.E. Sales Manager

Christiane Ferret  
c.ferret@dtstudyclub.com

Dental Tribune America, LLC  
116 W. 23rd St., Suite #500  
New York, NY 10011  
Phone: (212) 244-7181, Fax: (212) 244-7185

### Published by Dental Tribune America

© 2011 Dental Tribune America.  
All rights reserved.

Dental Tribune makes every effort to report clinical information and manufacturer's product news accurately, but cannot assume responsibility for the validity of product claims, or for typographical errors. The publishers also do not assume responsibility for product names or claims, or statements made by advertisers. Opinions expressed by authors are their own and may not reflect those of Dental Tribune International.

### Editorial Advisory Board

Dr. Sascha Jovanovic, Editor in Chief

Dr. Bernard Touati

Dr. Jack T. Krauser

Dr. Andre Saadoun

Dr. Gary Henkel

Dr. Doug Deporter

Dr. Michael Norton

Dr. Ken Serota

Dr. Axel Zoellner

Dr. Glen Liddelow

Dr. Marius Steigmann

## Tell us what you think!

Do you have general comments or criticism you would like to share? Is there a particular topic you would like to see more articles about? Let us know by e-mailing us at [feedback@dental-tribune.com](mailto:feedback@dental-tribune.com). If you would like to make any change to your subscription (name, address or to opt out) please send us an e-mail at [database@dental-tribune.com](mailto:database@dental-tribune.com) and be sure to include which publication you are referring to. Also, please note that subscription changes can take up to 6 weeks to process.

## IT Corrections

Implant Tribune strives to maintain the utmost accuracy in its news and clinical reports. If you find a factual error or content that requires clarification, please report the details to Managing Editor Sierra Rendon at [s.rendon@dental-tribune.com](mailto:s.rendon@dental-tribune.com).

800.441.3100



# NuOss<sup>™</sup> DS

*Delivery Syringe*

## DELIVERY SIMPLIFIED

### A NATURAL BONE MINERAL MATRIX DELIVERY SYRINGE SYSTEM

**NuOss<sup>™</sup>** – A natural, porous bone mineral matrix. It is produced by removal of all organic components from bovine bone. Due to its natural structure the anorganic bone mineral of NuOss<sup>™</sup> is physically and chemically comparable to the mineral matrix of human bone.

**NuOss<sup>™</sup> DS** – Our NuOss<sup>™</sup> cancellous granules are now available pre-loaded into a **delivery syringe** for ease of product placement.

#### **NuOss<sup>™</sup> DS DELIVERY SYRINGE**

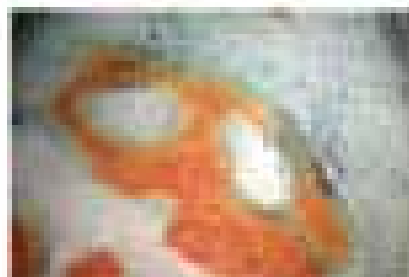
Number	Description	Porosity size	Volume	Price
508-9025	NuOss <sup>™</sup> DS Cancellous Granules	25-1.0mm	25cc	\$54.99
508-9050	NuOss <sup>™</sup> DS Cancellous Granules	25-1.0mm	50cc	79.99
508-9010	NuOss <sup>™</sup> DS Cancellous Granules	25-1.0mm	1.0cc	121.99

To place an order, please call **800.441.3100**

#### Clinical Histology: 3 Months

Area of study found bone tissue with trabeculae being the best:

- Embedded – best
- Self-trace – adequate



Yield bone appearance can be seen due to the particles of NuOss:

- New Yield Bone – best
- NuOss – best



\*New York, NY, NY, Penn. Proj. 02, 03, 04, 05, 06, 07, 08, 09, 10, 11, 12, 13, 14, 15, 16, 17, 18, 19, 20, 21, 22, 23, 24, 25, 26, 27, 28, 29, 30, 31, 32, 33, 34, 35, 36, 37, 38, 39, 40, 41, 42, 43, 44, 45, 46, 47, 48, 49, 50, 51, 52, 53, 54, 55, 56, 57, 58, 59, 60, 61, 62, 63, 64, 65, 66, 67, 68, 69, 70, 71, 72, 73, 74, 75, 76, 77, 78, 79, 80, 81, 82, 83, 84, 85, 86, 87, 88, 89, 90, 91, 92, 93, 94, 95, 96, 97, 98, 99, 100



Dr. Egon Euwe leads gIDE Implant Master Program students during a hands-on soft-tissue grafting workshop in Athens, Greece. (Photo/Provided by gIDE)

# gIDE implant students halfway to graduation

The Global Institute for Dental Education's (gIDE's) one-year master clinician program in implant dentistry just wrapped up its second session in Athens, Greece, where students spent four days learning all aspects of soft-tissue management and grafting before, during and after implant placement. Leading the lectures and

hands-on workshops was gIDE's faculty, Dr. Egon Euwe and Dr. Stavros Pelekanos.

Day one of the session covered topics ranging from periodontal considerations to minimally invasive soft-tissue techniques.

Euwe demonstrated optimal implant placement during the live surgery on day two. The students got their feet wet on day three with a hands-on workshop in upper porcine models highlighting different soft-tissue management and grafting procedures.

The session came to a close on day four with Pelekanos conducting the final workshop on framework fit.

As a program requirement, the students each presented a case out of their practice on an implant treatment plan for the posterior zone with minimum of one implant placement.

At gIDE's next session, the third, students will present an additional case on a treatment plan for the anterior zone with minimum of one implant placement and moderate bone and/or soft-tissue grafting.

This master program in Greece is just one of six programs gIDE conducts each year in implant dentistry. Another session two began the first week of March in Tokyo, Japan, led by LLU Professor in Restorative and Implant Dentistry Dr. Joseph Kan, Dr. Y Matsushita and Dr. Sascha Jovanovic via live broadcast, and the following week in Beijing, China, with Professor Paul Lin and Dr. Keng Mun Wong. At the end of March more second sessions occurred in both Australia with Euwe and Dr. Glen Liddelow, and North America with Jovanovic and Dr. Harel Simon.

All six programs will come together in September for a final week at UCLA in California. Students will receive a gIDE Master Program Certificate and a UCLA Certificate in Implant Dentistry for all their hard work.

gIDE was founded in 2005 as a private dental institute blending online digital education with hands-on learning. Its founders, world-renowned implant dentist, Jovanovic and colleagues, are dedicated to the advancement of clinicians and the health-care of their patients worldwide. It is the No. 1 academically ranked online dental education institute with an elite group of 102 faculty members published in more than 2,000 peer-reviewed journals. gIDE is a certified provider of ADA CERP continuing education credits.

For more information regarding gIDE's one-year master clinician programs, visit [www.gidedental.com](http://www.gidedental.com) or call (310) 696-9025. ■

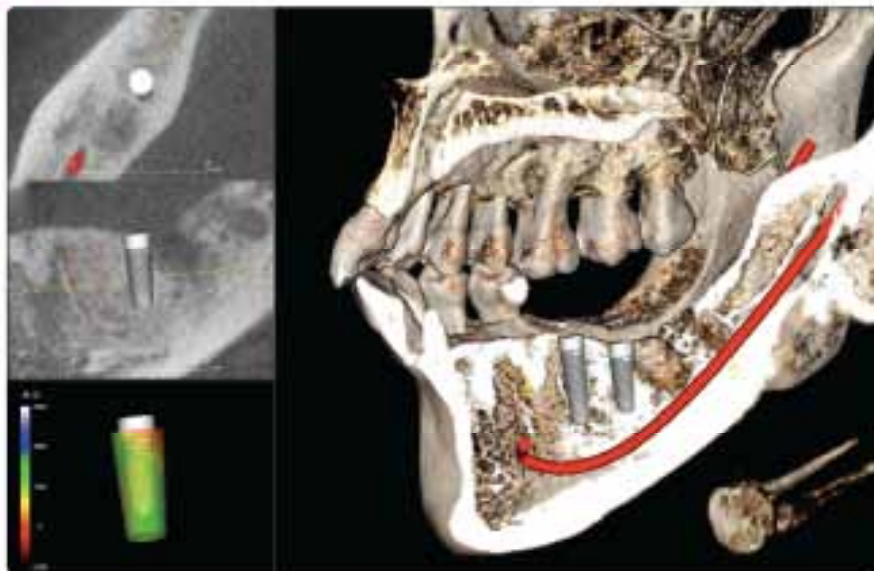
(Source: gIDE)

AD

## Implant Planning in 20 Seconds

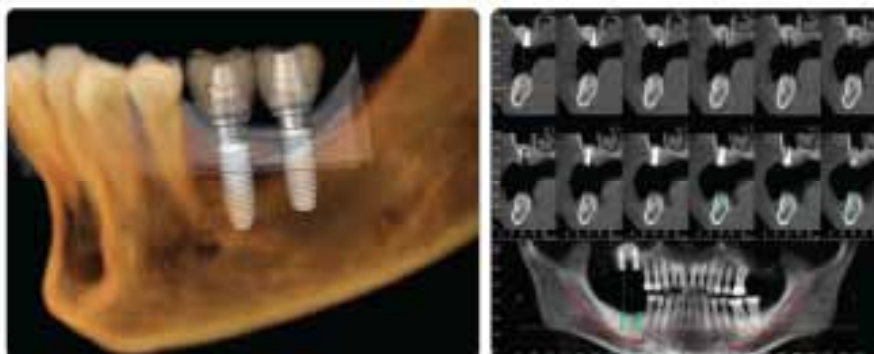
Visit us at AAP Annual Meeting  
Miami Beach, FL  
Booth #333.

with **Invivo5**



High quality 3D Implant planning system from CA, USA.

- Extremely fast and easy
- High quality and accurate visualizations
- No conversion, pre-processing, or preparation
- Software developed from Silicon Valley, California
- Surgical Guide made from California
- Expert support provided from California



Find out why so many doctors choose Invivo5. Call for a demonstration today!

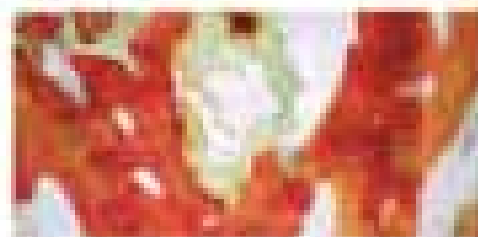


[www.anatomage.com](http://www.anatomage.com) Tel. 408-885-1474 Fax 408-295-9786 111 N. Market St. #800 San Jose, CA 95113

*Anatomage*

Introducing  
**enCore™**  
COMBINATION  
ALLOGRAFT

enCore™ Combination Allograft – the first allograft particulate bone grafting product combining mineralized and demineralized bone in a single bottle. Already a popular combination among many specialists, enCore™ leverages the complementary benefits of space-maintaining mineralized bone with osteoconductive demineralized matrix to optimize the environment for the regeneration of vital bone. *enCore™*



Representative histology image of enCore™. From a case using combination allograft. Magnification: 400x. © 2014 Osteogenics, Inc.

80% vital bone, 14% residual graft  
51% bone, 49% matrix

# Discover the *Marriage* of Occlusion & Aesthetics

Advanced Functional Restorative Dentistry,  
The Power of Physiologic Based Occlusion

Core 1 is a dynamic *three-day*, hands-on experience that shares the physiologic principles that support the union of Occlusion & Aesthetics. Participants will discover the power of eliminating life-long TMD pain and preventing children from suffering with TMD as adults. The program introduces you to a new level of comprehensive diagnostic care, designed to enhance the lives of your patients and rekindle the passion and fun you have at work!

ADA CERP® | Continuing Education Program



Division of Dental Education  
Approved ADA CERP Provider  
1100 W. Washington Blvd.  
Chicago, IL 60606-4100  
800.541.2261

[www.lviglobal.com](http://www.lviglobal.com)

OR 888.584.3237 FOR INFO

# Henry Schein Dental, ACE Surgical launch miniMARK miniature dental implant system

ACE Surgical Supply and Henry Schein Dental recently introduced the miniMARK™ Miniature Dental Implant System. This is the first mini implant system on the market that includes the renowned LOCATOR® Attachment, a trusted name in securing implant-fixed dentures.

The miniMARK system is available as a mini implant Ø2.5 mm, a standard body Ø3.25 mm, or as a one-piece Ø2.5 mm with a preable head that can be used for mandibular anterior single tooth applications.

The miniature implant system offers clinician proficiency and patient satisfaction thanks to the incorporation of the renowned LOCATOR attachment by Zest Anchors — a trusted name in securing implant-fixed dentures. The LOCATOR product line is known as a premier over-denture attachment in the dental industry.


“The miniMARK implant system enables dentists to provide denture stability with a minimally invasive procedure, all within the comfort of their dental office,” said the company’s vice president of marketing, Chris Carchidi.

Ace Surgical Supply is supporting new miniMARK system users with live training and 7 C.E. credits through a multi-city series of hands-on seminars that will provide the skills needed to place, restore and market the procedures. For more information, including educational opportunities, visit [www.minimarkimplant.com](http://www.minimarkimplant.com)

## About ACE Surgical Supply

For more than 35 years, ACE Surgical Supply ([www.acesurgical.com](http://www.acesurgical.com)) company has been known for developing and manufacturing high-quality, state-of-the-art products for bone regeneration, bone surgery/collection and wound dressing. Most recently, the company introduced the miniMARK Miniature Dental Implant System, which is designed to restore dental function


with a minimally-invasive, same-day procedure.

For more information, including educational opportunities, visit [www.minimarkimplant.com](http://www.minimarkimplant.com). The miniMARK Dental Implant System is available exclusively through Henry Schein Dental. To place an order, call (877) 537-8862. 



(Photo/ Provided by ACE Surgical)

AD




## NobelReplace™

The world's most used implant system.\*

**Internal tri-channel connection for accurate and secure prosthetic restorations.**

**TiUnite® surface and Groovy™ to enhance osseointegration.**

**Implant design that replicates the shape of natural tooth roots.**



**Color-coded system for accurate and fast component identification and ease of use.**

**Color-coding: step-by-step drilling protocol for predictable surgical procedures.**

**NEW** Now also available in 11.5 mm length

\* Source: Millennium Research Group

Versatility, ease-of-use and predictability have made NobelReplace Tapered the most widely used implant design in the world.\* NobelReplace Tapered is a general use, two-piece implant system that performs both in soft and hard bone, one- and two-stage surgical procedures, while consistently delivering

optimal initial stability. NobelReplace Tapered is a system that grows to meet the surgical and restorative needs of clinicians and their patients — from single-tooth restorations to more advanced multi-unit solutions. Whether clinicians are just starting or are experienced implant users, they will benefit from a system that

is unique in flexibility and breadth of application. Nobel Biocare is the world leader in innovative and evidence-based dental solutions. For more information, contact a Nobel Biocare representative at 800 372 5001 or visit our website, [www.nobelbiocare.com](http://www.nobelbiocare.com)

Nobel Biocare USA, LLC, 22715 Sawt Ranch Parkway, Yorba Linda, CA 92887; Phone 714 202 4800; Toll free 800 993 8100; Tech. support 888 725 7100; fax 714 202 9023  
 Nobel Biocare Canada, Inc. 9155 Leslie Blvd., Unit 100, Richmond Hill, ON L4B 4R1; Phone 905 762 3500; Toll free 800 993 9394; Fax 905 900 4243  
 Disclaimer: Some products may not be regulatory cleared/allowed for sale in all markets. Please contact the local Nobel Biocare sales office for current product assortment and availability.

### Send us your case study

Have an interesting implant case you would like to share with 15,000 of your peers? To have your case study considered for publication in Implant Tribune, send your 800- to 1,200-word case study and up to 12 high-resolution photos to Managing Editor Sierra Rendon at [s.rendon@dental-tribune.com](mailto:s.rendon@dental-tribune.com). Authors will be notified of publication and have an opportunity to review the designed case study prior to final publication. Cases will be published pending editor approval and space availability.



# Simply

ScrewPlant™

Legacy™

SwitchPlant™

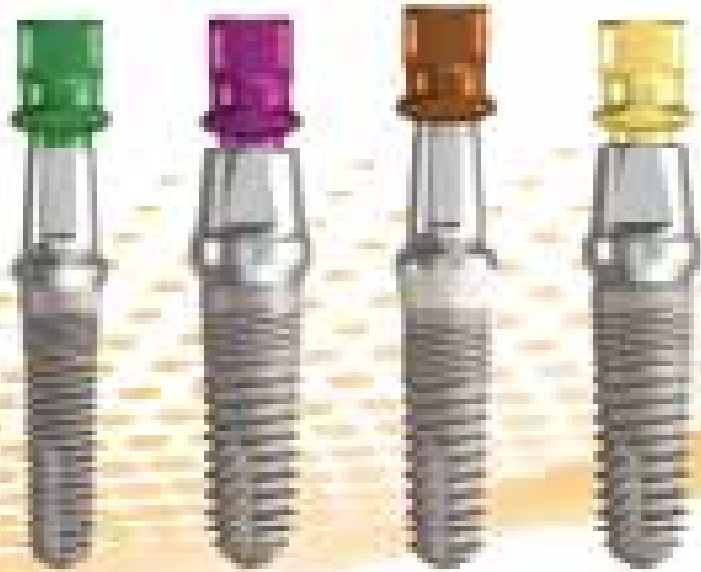
RoPlant™

ScrewDirect™  
Straight Snap-On

GoDirect™  
Attachment

SwitchDirect™  
Super-Receiving

ScrewDirect™  
Angled Connector



Two-Piece Implants



One-Piece Implants

There's no need to buy abutments when most of our implants' All-in-1 Packaging gives you a fixture-mount that functions as both transfer and abutment. Our multiple one-piece implant designs eliminate the need for an abutment all together. Restorative dentists, when working in the team approach, request our implants to assist in reducing or even eliminating the cost of prosthetic components.

When the clinical situation necessitates the purchase of a specific abutment, remember that our broad line of industry-compatible prosthetics offers improved designs at a low cost.

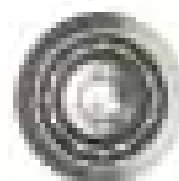
## Our industry-compatible connections for ultimate versatility



**ScrewPlant™**  
Internal Flange  
with External Bevel  
EZ Preparation



**RoPlant™**  
Internal Flange  
Compatible with  
RoAttachment™



**SwitchPlant™**  
Internal Flange  
Compatible with  
SwitchDirect™



**Legacy™**  
Internal Flange  
Compatible with  
Direct™, RoAttachment™

Find the industry-compatible implant solution that fits your practice today.

All the prices were April 2013.  
Compatible with Best OSCAR® System.  
Available for industry-standard internal flange and internal for sub-connection only.  
Comparison based upon Straumann's CME System's internal flange abutments. Price varies depending upon the laboratory.  
OSCAR® is a registered trademark of Zentec Inc./Zentec Company. The GoDirect™ and Switch™ Systems are neither authorized, endorsed nor sponsored by Zentec America Company.



# Smarter



TITE 30° Angled Abutments - 1120

Abutment in 2 Colar Heights - 1140



Custom Abutments on Anodized Titanium Bases - 1121

Anodized Titanium Bases for Custom Zirconia Abutments - 800

GPS™ Divergence Attachment System features Straight & Angled Abutments that provide a retentive platform compatible with LOCATOR® attachments. All-in-1 Packaging includes Anodized Housing with a 5lb. Retentive Cap & Transfer. Straight Abutments accommodate up to 20° divergence while 15° & 30° Angled Abutments are suited for overstructures on angled implants.

Zirconia Abutments on Titanium Bases combine esthetics with strength & precision for restorations in the esthetic zone. The titanium base is gold-welded to maintain the natural tooth color of the zirconia while providing structural support. Their stock abutments with contoured margins are provided in 12° & 15° with 1 & 2mm collar heights to minimize the need for preparation, thereby providing the benefits of custom abutments at less than half the price.

Our full line of industry-compatible, simply smarter prosthetics.

	Standard	Large Diameter	Wide Platform	Wide Platform	Low Profile	Standard	Standard	Standard	Ball	Ball	Ball	Ball	Ball	Ball
Maxilla	175	200	140	140	1100	1120	1130	120	1100	1100	1120	110	110	110
Mandible	110	110	110	110	110	110	110	110	110	110	110	110	110	110
Maxilla	165	170	110	110	110	110	110	110	110	110	110	110	110	110
Mandible	110	110	110	110	110	110	110	110	110	110	110	110	110	110