

CAD/CAM

international magazine of digital dentistry

3²⁰¹⁷

practice management

Digitising your implant practice

case report

Digital assisted precise planning and manufacturing of a fixed dental restoration

cone beam supplement

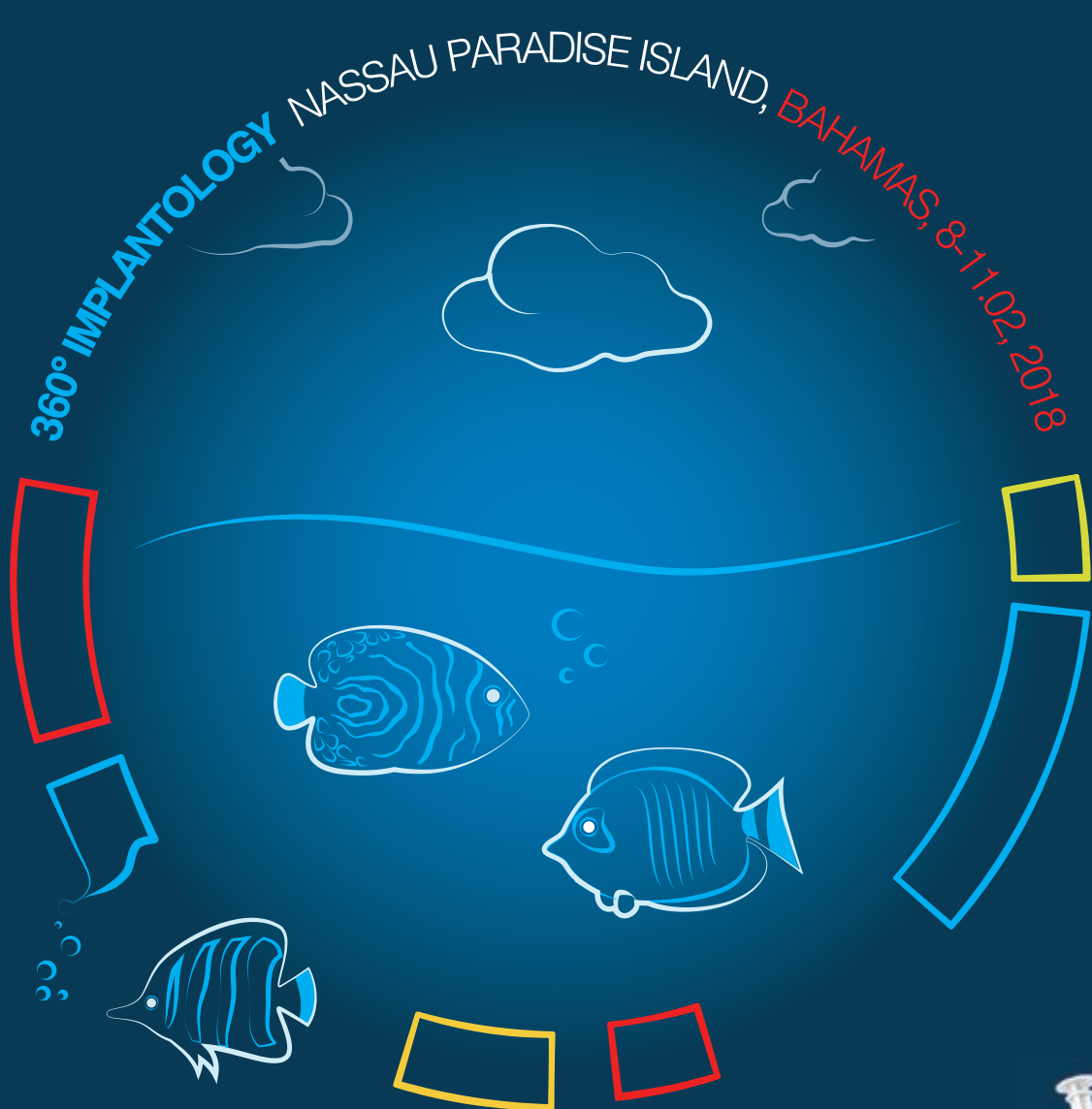
European dental imaging equipment market in a state of change

dti Dental
Tribune
International





MIS GLOBAL
CONFERENCE 2018



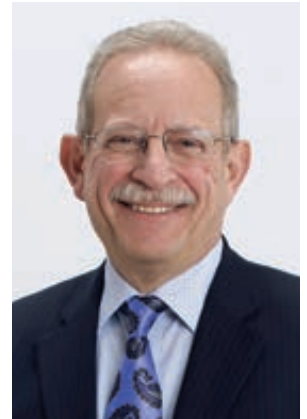
LEARN THE EASY WAY. MAKE IT SIMPLE

MIS is pleased and honored to invite you to the 4th MIS Global Conference: 360 IMPLANTOLOGY, in beautiful Nassau Paradise Island, Bahamas. This Global Conference will deliver an intense and unforgettable experience in every aspect: scientific, professional and personal. [For registration, please contact your local MIS Representative.](#)

mis[®]



To print or *not* to print?



Dr Scott D. Ganz

The lost-wax method, has been largely replaced with the advent of computer-aided design and computer-aided manufacturing (CAD/CAM) for the fabrication of everyday crown and bridge dentistry, implant superstructures, bar overdentures, and much more. Additionally, the continued development of new and improved materials have created strong, aesthetic, long lasting restorations fabricated by a subtractive process facilitated by large lab-based milling machines. Smaller in-office milling machines, combined with highly accurate intraoral scanners have helped to bring the process directly to the clinician's private office providing the state-of-the-art digital workflow for faster design and fabrication of patient-specific restorations.

For most clinicians, the term 'rapid prototyping' is a concept that applies more to big industry rather than dentistry. However, many clinicians involved with implant dentistry and guided surgery applications are familiar in some way with the term 'stereolithography'. As defined by the Oxford Dictionary, stereolithography is 'a technique or process for creating three-dimensional objects, in which a computer-controlled moving laser beam is used to build up the required structure, layer by layer, from a liquid polymer that hardens on contact with laser light'. This modality is therefore an 'additive' process, differing from the 'subtractive' process required for milling, and until recently was not practical or cost-effective for the routine dental practice.

The proliferation of low-cost 3-D printers during the past few years has ignited tremendous interest in rapid prototyping using additive fabrication modalities. Many dental laboratories, single and group practitioners around the globe have taken the digital workflow to new levels by printing models for orthodontics, oral surgery, restorative dentistry, night guards, occlusal orthotic devices, surgical templates, and much more. 3-D printing has become the new catalyst, helping to bring diagnostic and manufacturing control to the dentist, and a new fabrication process to the dental laboratory.

It must be stated that there is a significant difference in printing a word processing document from your computer to a laser printer – going from the virtual to a physical piece of paper you can hold in your hand. 3-D printing is not quite that simple. Regardless of the type or cost of a 3-D printer, in order to 'print' a file, there needs to be three-dimensional data. This data can come from an intraoral scanner, a desktop optical scanner, cone beam computed tomography, singularly or in combination. The data needs to be managed using appropriate software to produce the desired outcome. This takes knowledge and time to get it right. So as we continue to move from the analogue to the digital workflow, it may be time to evaluate the state-of-the-art and ask the question: 'To print or not to print?'

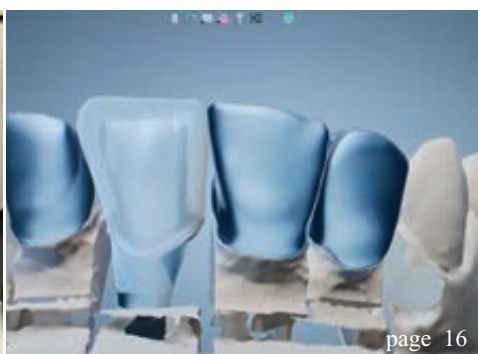
The answers to this and many other questions can be found among the pages of this publication representing some of the best clinical minds of our time. We hope that you will enjoy the current issue!

A stylized, handwritten signature in black ink, appearing to read 'Scott Ganz'.

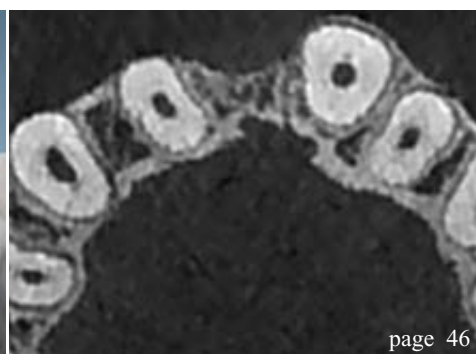
Respectfully
Dr Scott D. Ganz, DMD
Editor in Chief



page 06



page 16



page 46

| editorial

- 03 **To print or not to print?**
Dr Scott D. Ganz

| practice management

- 06 **Digitising your implant practice**
Dr Ross Cutts

| case report

- 12 **Digital assisted precise planning and manufacturing of a fixed dental restoration**
Dr David Guichet
- 16 **Immediate implant placement in aesthetic zone, followed by final restoration using CARES**
Digital Solutions
Dr André Callegari
- 20 **Using CAD/CAM for a combination approach to full mouth reconstruction**
Dr Ara Nazarian
- 26 **Brain-guided implant reconstruction: Who makes the decisions?**
Dr Scott D. Ganz

| industry report

- 32 **TRINIA—Metal-free restorations**
Prof. Rolf Ewers, Paolo Perpetuini, Dr Vincent J. Morgan, Prof. Mauro Marincola, Richard Wu & Dr Rudolf Seemann
- 38 **Implant-retained bar overdenture—planning and manufacturing process**
Marino Zampieri, Fabio Marchiori, Luca Dartora, Massimo Coin, Lucio Carraro & Dr Pietro Giudice

| industry news

- 42 **CAD/CAM abutments and implant bars on demand with NobelProcera Services**
By Nobel Biocare

| cone beam supplement

- 44 **European dental imaging equipment market in a state of change**
Sasha Stephanian & Jeffrey Wong
- 46 **Optimal treatment planning for perfect aesthetic and functional results—case report**
Dr Cosmin Dima
- 50 **The use of CBCT and CAD/CAM techniques in complex implant-supported rehabilitation of maxilla—Part II**
Dr Tomasz Śmigiel

| industry news

- 56 **Manufacturer news**

| meetings

- 58 **4th MIS Global Conference—Paradise Island Bahamas**
- 60 **International Events**

| about the publisher

- 61 submission guidelines
- 62 imprint



Cover image courtesy of Nobel Biocare AG
(www.nobelbiocare.com)

Your time is precious

EAO 2017

Visit us at booth D3 and
hospitality suite H2.



"Many clients specifically ask for authentic manufacturer parts, so we are thankful to have both the design and milling completely done by Nobel Biocare."

Mr Joseph M. Apap, CDT, MDT, US

Outsource with NobelProcera Services

Save time by outsourcing scan, design and production of your precision-fit abutments, implant crowns and implant bars. Simply send us your case and our team of skilled CAD designers will do the rest. You'll get the design for approval within 24 hours.

Deliver authentic products in unrivaled quality to your customers.

Visit nobelbiocare.com/nobelproceraservices



GMT 51087 GB 1704 © Nobel Biocare Services AG, 2017. All rights reserved. Nobel Biocare, the Nobel Biocare logotype and all other trademarks are, if nothing else is stated or is evident from the context in a certain case, trademarks of Nobel Biocare. Please refer to nobelbiocare.com/trademarks for more information. Product images are not necessarily to scale. Disclaimer: Some products may not be regulatory cleared/released for sale in all markets. Please contact the local Nobel Biocare sales office for current product assortment and availability. For prescription use only. Caution: Federal (United States) law restricts this device to sale by or on the order of a licensed dentist. See Instructions for Use for full prescribing information, including indications, contraindications, warnings and precautions.

Digitising your implant practice

Author: Dr Ross Cutts, UK

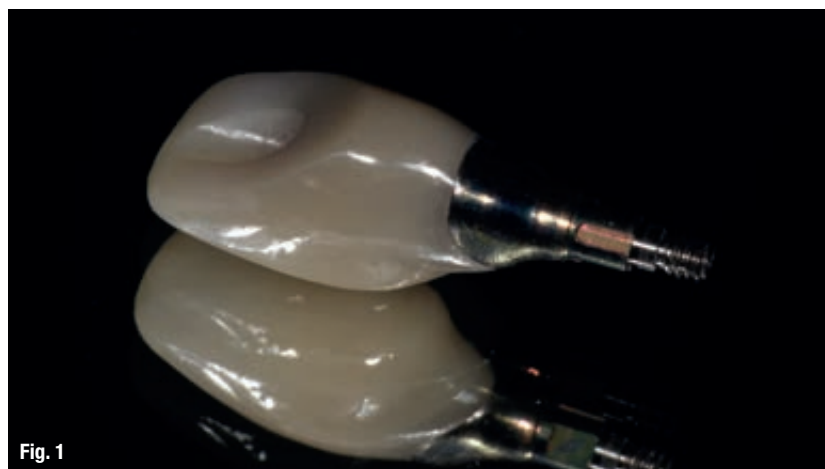


Fig. 1



Fig. 2



Fig. 3



Fig. 4



Fig. 5

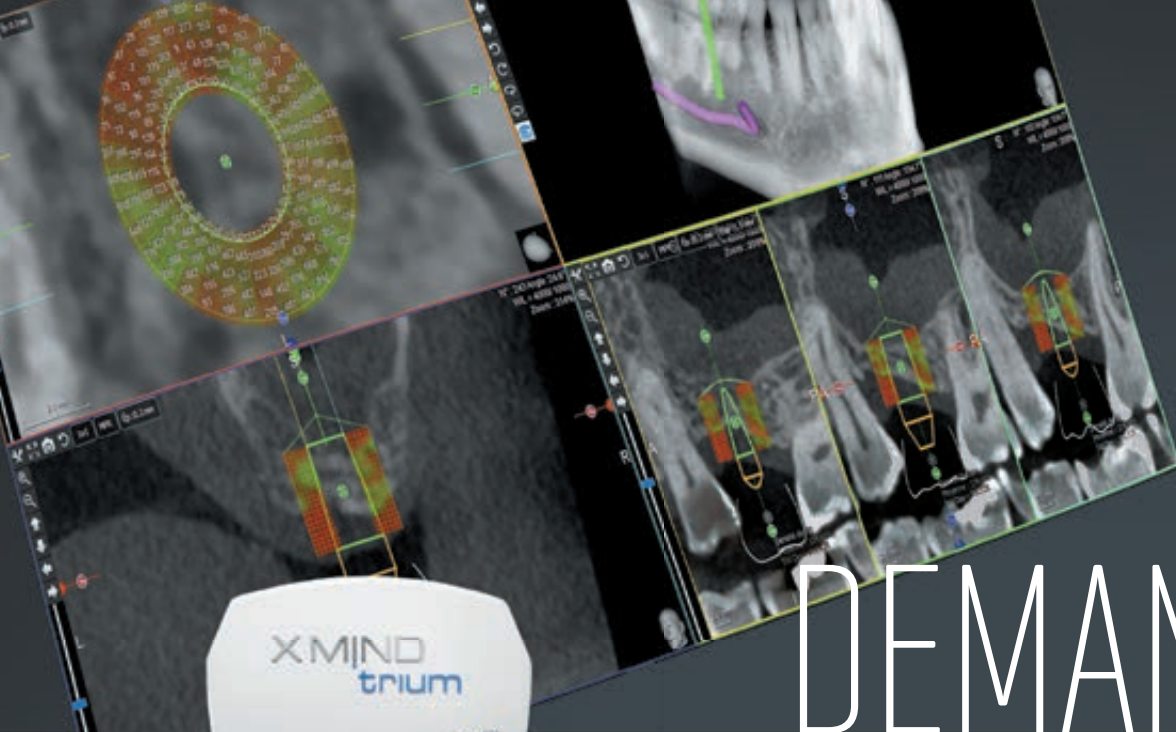
Undoubtedly, digital dentistry is the current topic. Over the last five years, the entire digital workflow has progressed in leaps and bounds. There are so many different digital applications that it is sometimes difficult to keep up with all the advances. Many dentists are excited about the advantages of new technologies, but there are an equal number who doubt that the improved clinical workflow justifies the expense.

I have many times heard the argument that there is no need to try to fix something that is not broken. It is so true that impressions have their place and there are certainly limitations to the digital workflow that anyone using the technology should be aware of. For me, however, the benefits of digital far outweigh the disadvantages. In fact, the disadvantages are the same as with conventional techniques.

Chairside CAD/CAM single-visit restorations have been possible for over 20 years, but it was only recently that we became able to mill chairside implant crown restorations after the release of Variobase (Straumann) and similar abutments. I made my first CEREC crown (Dentsply Sirona) back in 2003 with a powdered scanner, and the difference from what I remember then to how we can make IPS e.max stained and glazed restorations (Ivoclar Vivadent) now is amazing.

An investment not an expense

The results of a survey regarding the use of CAD/CAM technology were published online in the *British Dental Journal* on 18 November 2016. Over a thousand dentists were approached online to take part in the survey and the 385 who replied gave very interesting



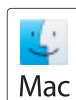
I AM DEMANDING



X-MIND trium

3D technology that facilitates implant planning with instant volume measurement and bone density assessment

- Evaluate in one click the volume and bone density
- Increase your success rate with a 75µm resolution
- Focus on the region of interest with a wide range of fields of view
- Simplify implant planning with only one software
- Provide more accurate diagnosis thanks to high-detail imaging
- Obtain a full and illustrated report in less than one minute
- Bring a safer therapeutic implementation, less traumatic and less stressful
- Reduce complications related to implant placement
- Allow your patient to visualize the therapeutic recommendation
- Control the dose of X-ray emitted



WINDOWS®
COMPATIBLE



Fig. 6



Fig. 7

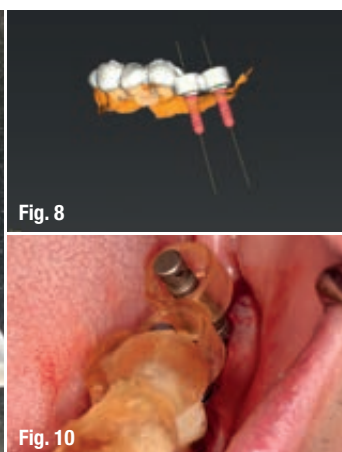


Fig. 8

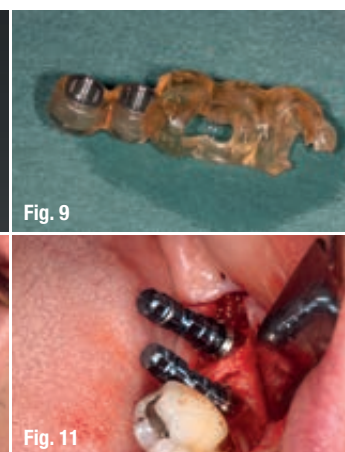


Fig. 9

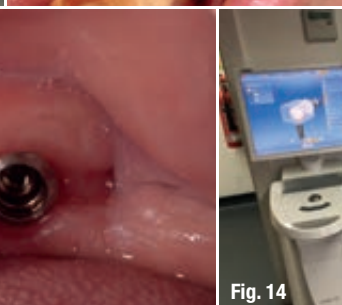


Fig. 10



Fig. 11

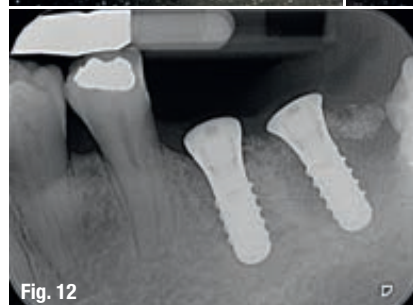


Fig. 12

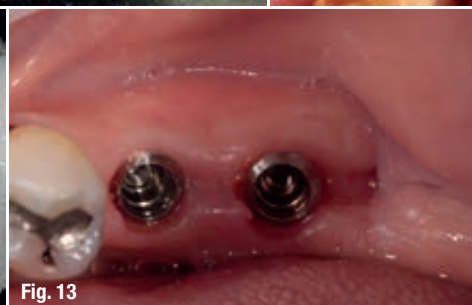


Fig. 13



Fig. 14

responses. The majority did not use CAD/CAM technology, and the main barriers were initial cost and a lack of perceived advantage over conventional methods.

Thirty per cent of the respondents reported being concerned about the quality of the chairside CAD/CAM restorations. This is a valid point. We must not let ourselves lose focus that our aim should always be to provide the best level of dentistry possible. For me, digital dentistry is not about a quick fix; it is about raising our performance and improving predictability levels by reducing human error.

In the survey, 89 per cent also said they believed CAD/CAM technology had a major role to play in the future of dentistry. I really cannot imagine that once a dentist has begun using digital processes that he or she would revert to conventional techniques.

What is digital implant dentistry?

Many implant clinicians have probably been using CAD/CAM workflows without even realising it, as many laboratories were early adopters, substituting the lost-wax technique and the expense of gold for fully customised cobalt–chromium milled abutments (Fig. 1).

One of my most important goals in seeking to be a successful implantologist is to provide a dental implant solution that is durable. We have seen a massive rise in the incident of peri-implantitis and have found that a large proportion of these cases can be attributed to cement inclusion from poorly designed cement-retained restorations (Fig. 2). Even well-designed fully customised abutments and crowns can have cement inclusion if the restoration is not carefully fitted (Fig. 3). This has led to a massive rise in



Fig. 15

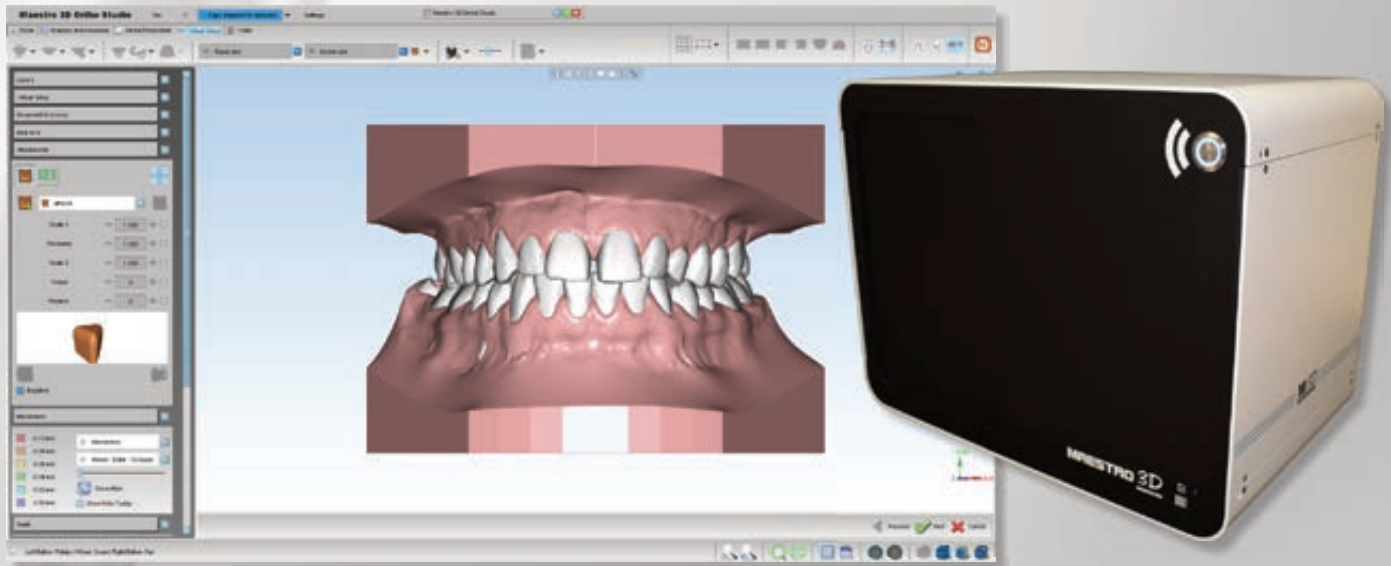


Fig. 16

Maestro 3D DENTAL System

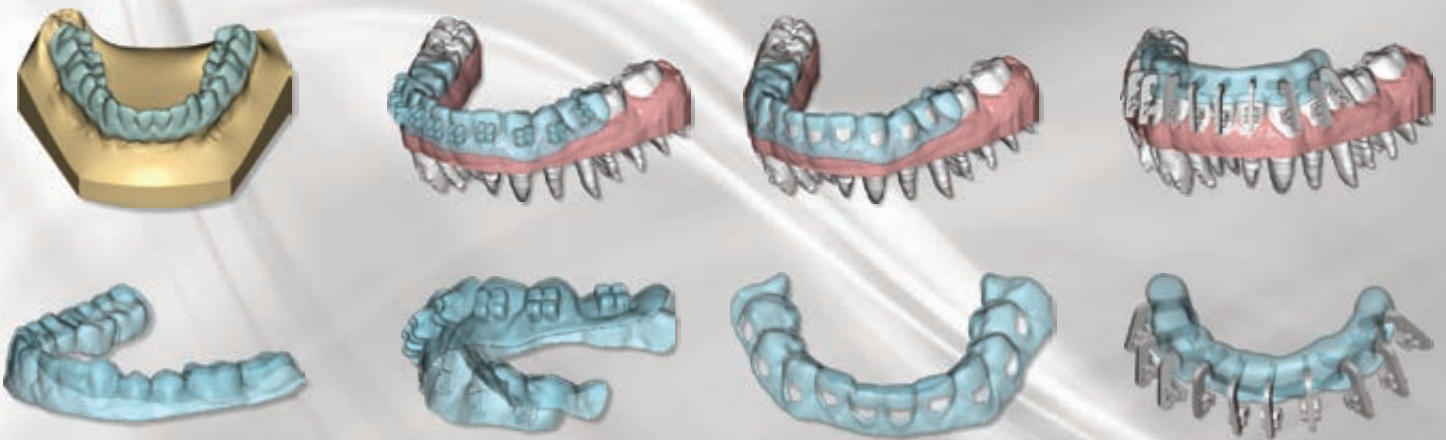
Innovative solutions for dental applications

www.maestro3d.com



OPEN 3D DENTAL SCANNER

Dental Studio software



www.maestro3d.com