



ENDO TRIBUNE DEPICTING VARIATIONS IN TOOTH ANATOMY

Dr. Craig Barrington talks about how he captures his high-def root canal images.

► page B1



HYGIENE TRIBUNE PAW'S 'TATOOTH' AND THE DENTAL LAB TECH

Hygiene Tribune editor in chief tracks her first crown back to the lab.

► page C1



IMPLANT TRIBUNE AAID IN NEW ORLEANS: BUSINESS & BEIGNETS

American Academy of Implant Dentistry meets for learning and more.

► page D1



Time again for November in New York City

GNYDM, biggest dental meeting in U.S., includes four-day exhibit hall

Organizers of the 2016 Greater New York Dental Meeting recognize the unique challenges of the entrepreneurial side of dentistry with a range of business-oriented sessions, including one featuring a celebrity speaker. Randi Zuckerberg is an entrepreneur, investor, bestselling author and media personality. As an early employee at Facebook, she led major marketing initiatives in the company's formative years and has gone on to launch Zuckerberg Media, with the mission of creating media content that puts intelligent, tech-savvy, entrepreneurial women and girls at the forefront of media and technology.

She is featured at the "Celebrity Luncheon" (tuition: \$85) at noon on Monday, Nov. 28, during the six-day meeting, which this year runs from Nov. 25–30.

Any dental professional should be able to creatively apply many of Zuckerberg's insights, but her session might be especially beneficial to those newest to the profession. For that reason, its Monday scheduling appears effectively placed the day after "Owning your own practice: The key to your financial future." The Sunday morning session is part of the GNYDM New Dentists' Program, a series of courses scattered throughout the meeting.

Whether you're ready to purchase your first practice, work for someone or enroll in a postgraduate residency program, this course — and the overall series (newly expanded this year) — promise to help you meet professional goals.

► See NEW YORK, page A3



Enjoy a four-day exhibition hall with more than 700 exhibitors, top presenters from across the world and the sights and sounds of one of the world's most fascinating cities — all at the 2016 Greater New York Dental Meeting. Above, looking down West 15th Street from the High Line. Photo/DTI

EVENTS A3

- Yankee Dental Congress sessions address opioid addiction risk
- New look, direction to Lab Expo at Pacific Dental Conference

INDUSTRY NEWS A4–A17

- Bisco: Benefits of bonding combine with simplicity of traditional cementing
- Handler: Handpiece ends need to change brushes
- Flow Dental: New intraoral camera sleeves offer custom fit at economical price
- Glidewell Laboratories magazine has Q&As with leaders in implantology
- Kettenbach offers six times the choice
- Sulzer Mixpac: Mixing, dosing with consistency
- VOCO: World's first all-ceramic-based, flowable direct restorative
- Upper, lower dentures on Rhein83 components
- Keystone Industries: Clearer choice for partial dentures
- Ionolux: Immediately packable resin modified glass ionomer restorative
- Malaysian Rubber Export Promotion Council: Barrier protection critical with dental gloves

AD

► FLOWABLE THEN
► PACKABLE AND
► NON-STICKY

other brands IonoStar[®] Plus

Fast-set Glass Ionomer Restorative

... HIGHER FLUORIDE RELEASE

VOCO
THE DENTALS

For Technical Questions: Call 1-888-658-2584 • www.vocoamerica.com

Dental Tribune America
116 West 23rd Street
Suite #500
New York, N.Y. 10011

PRST STD
US Postage Paid
Permit No. 1239
Bellmawr, N.J.

Referrals Simplified

Securely and easily send electronic referrals



RecordLinc

Save time & stay compliant

Streamline communication among dental colleagues

Call: **415.749.1444**

Visit: **RecordLinc.com**



PATIENT PORTAL



REFERRALS



SCHEDULING



INTEGRATION



MESSAGING



eFORMS

DENTAL TRIBUNE

The World's Dental Newspaper - US Edition

PUBLISHER & CHAIRMAN

Torsten Oemus t.oemus@dental-tribune.com

PRESIDENT & CHIEF EXECUTIVE OFFICER

Eric Seid e.seid@dental-tribune.com

GROUP EDITOR

Kristine Colker k.colker@dental-tribune.com

EDITOR IN CHIEF DENTAL TRIBUNE

Dr. David L. Hoexter feedback@dental-tribune.com

MANAGING EDITOR U.S. AND CANADA EDITIONS

Robert Selleck r.selleck@dental-tribune.com

MANAGING EDITOR

Fred Michmershuizen
f.michmershuizen@dental-tribune.com

MANAGING EDITOR

Sierra Rendon s.rendon@dental-tribune.com

PRODUCT/ACCOUNT MANAGER

Humberto Estrada h.estrada@dental-tribune.com

PRODUCT/ACCOUNT MANAGER

Will Kenyon w.kenyon@dental-tribune.com

PRODUCT/ACCOUNT MANAGER

Maria Kaiser m.kaiser@dental-tribune.com

CLIENT RELATIONS MANAGER

Leerol Colquhoun l.colquhoun@dental-tribune.com

EDUCATION DIRECTOR

Christiane Ferret c.ferret@dtstudyclub.com

ACCOUNTING COORDINATOR

Nirmala Singh n.singh@dental-tribune.com

Tribune America LLC
116 West 23rd St., Ste. #500
New York, N.Y. 10011
(212) 244-7181

Published by Tribune America
© 2016 Tribune America, LLC
All rights reserved.

Dental Tribune strives to maintain the utmost accuracy in its news and clinical reports. If you find a factual error or content that requires clarification, please contact Managing Editor Robert Selleck at r.selleck@dental-tribune.com. Dental Tribune cannot assume responsibility for the validity of product claims or for typographical errors. The publisher also does not assume responsibility for product names or statements made by advertisers. Opinions expressed by authors are their own and may not reflect those of Tribune America.

EDITORIAL BOARD

Dr. Joel Berg
Dr. L. Stephen Buchanan
Dr. Arnaldo Castellucci
Dr. Gordon Christensen
Dr. Rella Christensen
Dr. William Dickerson
Hugh Doherty
Dr. James Doundoulakis
Dr. David Garber
Dr. Fay Goldstep
Dr. Howard Glazer
Dr. Harold Heymann
Dr. Karl Leinfelder
Dr. Roger Levin
Dr. Carl E. Misch
Dr. Dan Nathanson
Dr. Chester Redhead
Dr. Irwin Smigel
Dr. Jon Suzuki
Dr. Dennis Tartakow
Dr. Dan Ward

Tell us what you think!

Do you have general comments or criticism you would like to share? Is there a particular topic you would like to see articles about in Dental Tribune? Let us know by sending an email to feedback@dental-tribune.com. We look forward to hearing from you!

If you would like to make any change to your subscription (name, address or to opt out) please send us an email at c.maragh@dental-tribune.com and be sure to include which publication you are referring to. Also, please note that subscription changes can take up to six weeks to process.

YDC sessions address opioid addiction risk

Nearly 28,000 dental professionals and guests from across the U.S. are expected at what organizers describe as New England's largest dental meeting: Yankee Dental Congress 2017 will be from Jan. 25–29, at the Boston Convention and Exhibition Center.

Among the 300 courses are programs tying into Massachusetts Gov. Charlie Baker's effort to combat addiction in the commonwealth. This includes a "Fast Track" program on pain management and prescription monitoring.

The Sleep Apnea Pavilion will showcase new technologies from laboratory providers and educate attendees on oral appliance therapy and laser procedures — as well as pediatric dental sleep medicine.

The 3-D Printing Pavilion will demonstrate high-resolution desktop 3-D printing and how it provides affordable access to advanced digital workflows for labs and dental practices.

The exhibit hall will host more than 450 exhibitors along with several education pavilions.

Special presentations this year include "A Conversation with Dr. Lisa Genova," author of the best-selling novel "Still Alice," basis for the identically titled Academy Award-winning film. Another special presentation features Nancy Frates, mother of Pete Frates, who was the inspiration for the ALS ice-bucket challenge.

For more about Yankee Dental Congress 2017, visit www.yankeedental.com or call (877) 515-9071.

(Source: Yankee Dental Congress)

New look, direction to Lab Expo at PDC

Vancouver's 2017 Pacific Dental Conference, one of the largest dental meetings in North America, is, offering a broad selection of C.E., with more than 200 open sessions and hands-on courses, March 9–11 at the Vancouver Convention Centre.

Register at www.pdconf.com. Special hotel rates are available through Jan. 13.

In the exhibit hall, close to 300 exhibiting companies will occupy 625 booths, with the exhibit floor open on Thursday and Friday, March 9 and 10. For the majority of attendees, C.E. credit is given for general attendance (up to five hours) and hour-for-hour credit for individual courses. It's possible to acquire up to 20 C.E. credits



Vancouver, B. C. site of the Pacific Dental Conference.
Photo/Provided by the PDC

The PDC Lab Expo, with a new look and direction, will be Saturday, March 11, bringing together dental techs, denturists, dentists and staffs. Expo attendees will be able to visit the exhibits area between 8:30 a.m. and 3 p.m. and during breaks. A new "Showcase Stage" in the PDC Lab Expo will feature 30-minute demonstrations.

In British Columbia, the tradition of gathering to share information on dentistry

began in 1936 when the first BC Study Club was established. As time passed, the need for an annual meeting became evident and an annual convention was created.

The PDC Organizing Group (nine dentists and one hygienist) volunteers its time to present one of the most reputable dental conferences in North America.

(Source: Pacific Dental Conference)

← NEW YORK, page A1

The 2016 GNYDM is packed with free C.E. every day, and as always there is no preregistration fee. There will be more than 300 educational courses consisting of seminars, hands-on workshops, essays and live-patient demonstrations. Tickets are required for all programs with the exception of the demonstrations in the live dentistry arena.

More highlights among educational offerings include: the Third Annual World Implant Expo, the Second Annual Global Orthodontic Conference, a new four-day Sleep Apnea Conference, a new International Diabetes Symposium, a four-day Invisalign Expo, dental laboratory education, four days of dental hygienist programs, four days of programs for dental assistants and, new this year, educational programs in Korean in addition to already popular offerings in Portuguese, Spanish, Italian, Russian and French.

Four-day exhibit hall

And, of course, there are four days of exhibits, with 650 companies occupying 1,700 booths. Educational opportunities in the exhibit hall seem almost as extensive as the meeting's classroom offerings, anchored by the live dentistry stage, featuring morning and afternoon sessions each day of the four-day exhibition schedule.

You can visit the New Products Pavilion at the rear of aisle 600/700 and see some of the industry's most recently developed products and services.

Download the GNYDM app

Be sure to download the GNYDM 2016 mobile app to make it easier to plan

out your attendance strategy. The app's planning tools include a comprehensive search engine and interactive maps that make it easy to find companies, discover products, navigate the show floor and stay up-to-date with meeting-related news and events.

The app will enable you to access the scientific programs, handouts and room locations to plan the sessions you will attend. You can further personalize your experience by adding favorite sessions to create your schedule, adding notes to a session in advance or in real time — or you can map out your day at the exhibition by highlighting which pavilions you will visit. You'll also be able to check shuttle-bus schedules, see places to visit and much more.

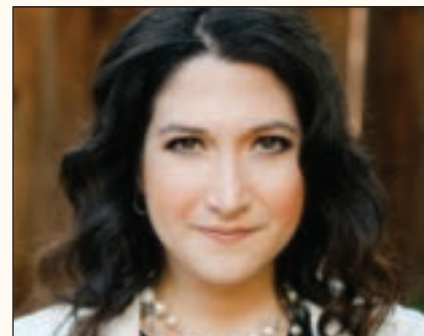
Meeting organizers say that the Greater New York Dental Meeting is designed to create an experience that inspires and empowers. The meeting consistently delivers countless opportunities to discover new approaches, to touch and feel the latest technologies and materials and to interact with fellow practitioners and top industry representatives.

54,000 expected

Last year's meeting attracted 54,000 registrants from all 50 states and 131 countries. There are no organization memberships required to attend the GNYDM. All are welcomed.

And, of course, the meeting's biggest attractions of all will be available in full force: the wonders of New York City in the midst of the holiday season, with shopping, shows, museums, restaurants, and endless exploring.

(Source: GNYDM)



Randi Zuckerberg, an entrepreneur, investor, bestselling author and media personality, is featured at the 'Celebrity Luncheon' at noon on Monday, Nov. 28, during the six-day GNYDM, which this year runs from Nov. 25–30. Photo/Provided by the Greater New York Dental Meeting



Under the glass ceiling in the Jacob K. Javits Convention Center, attendees at the 2015 GNYDM stream into the exhibit hall on the first morning of the meeting's four days of exhibits. Photo/DTI file photo



Fig. 1: Self-adhesive feature means no etching, priming or bonding of prepared dental surfaces. Photos/Provided by Bisco



Fig. 2: Bonds to most substrates, including zirconia restorations, without the need for separate chemical primers.



Fig. 3: Easy to clean up with hand instruments and floss.



Fig. 4: Kind to the gingiva, even deeper subgingival margins.

Benefits of bonding combine with simplicity of traditional cementing

By Dr. Joseph Kim

**GNYDM
BOOTH
NO. 1200**

BISCO's next generation resin cement combines the benefits of bonding with the simplicity of a traditional cementing protocol. TheraCem is a dual-cured, calcium and fluoride-releasing, self-adhesive resin cement indicated for luting crowns, bridges, inlays, onlays and all types of posts. Delivering a strong bond to zirconia and most substrates, along with easy cleanup and high radi-

opacity, TheraCem offers clinicians reliable and durable cementation of indirect restorations.

The self-adhesive feature means no etching, and no priming or bonding of prepared dental surfaces. This means greater predictability in preparations with subgingival margins, where etchants or bonding agents may cause bleeding (Fig. 1).

With TheraCem, a clean, prepped dentin or enamel surface is all that is needed to achieve excellent bond strengths, with the added benefit of sustained cal-

cium and fluoride release. TheraCem also forms a strong bond to most substrates, including zirconia restorations, without the need for separate chemical primers (Fig. 2).

Easy to clean up

TheraCem is easy to clean up with hand instruments and floss (Fig. 3). For deeper subgingival margins, TheraCem is kind to the gingiva, although the margins should be thoroughly inspected to ensure complete removal of excess cement (Fig. 4).

Due to innovative chemistry, TheraCem achieves a high degree of chemical conversion, which ensures long-term durability, without the need for refrigeration when it is not being used. For clinicians, this means that peace of mind can be nearby and ready to use in every operator.

All of these time-saving features translate to decreased chair time and reduced frustration for both clinicians and patients. TheraCem is true simplicity and durability through cutting-edge chemistry.

AD

MIXPAC™ T-Mixer

It is so easy to save material.

T-Mixer™ up to 40% less material waste

Visit us at GNYDM 2016

MIXPAC™ makes your work easier.

World class made in Switzerland. The original mixing tips from Switzerland perfect the mixing, application and dispensing of multi-component materials. MIXPAC systems assure efficient working at highest quality standards. The new, shorter T-Mixer™ generation reduces material waste in the mixing tip by up to 40% at consistent handling.

More information at: www.sulzer.com

SULZER

Sulzer Mixpac Ltd
Fluettstrasse 7
9469 Haag, Switzerland

P +41 81 772 20 00
F +41 81 772 20 01

mixpac@sulzer.com
www.sulzer.com

STRUGGLING TO STAY AFLOAT?

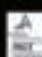
DEBT

INSURANCE

FIND OUT WHY LVI IS YOUR LIFE SAVER.

Register Now For CORE I **Advanced Functional Physiologic Dentistry**

888.584.3237 • www.lviglobal.com • concierge@lviglobal.com

 Academy of General Dentistry Approved PACE Program Provider (AGD) #102743
Credit Approval does not imply acceptance by a state or provincial board of dentistry or AGD endorsement. © 2016 LVI Global. All Rights Reserved.



ADVANCED FUNCTIONAL PHYSIOLOGIC DENTISTRY (AFP) is a service of the American Dental Association to assist dental professionals in identifying quality providers of continuing dental education. ADA CERP does not approve or endorse individual courses or instructors, nor does it imply acceptance of credit hours by boards of dentistry. Courses or speakers listed on this CE provider may be directed to the provider or to ADA CERP at www.ada.org/cehistory.

**CHANGING DENTISTRY.
CHANGING LIVES.**

Handpiece ends need to change brushes

Handler's 500-IV Syncro-Torque IV requires minimal maintenance

By Handler Manufacturing Staff



The 500-IV Syncro-Torque IV comes complete with a brushless handpiece, variable speed digital control console, foot pedal, set of two wrenches, power cord, cradle and one-year warranty against manufacturing defects. Photo/ Provided by Handler Red Wing International

Handler Manufacturing has recently released the Syncro-Torque IV, which is described by the company as being "the next-generation dental-lab handpiece."

The 500-IV Syncro-Torque IV comes complete with a brushless handpiece, variable speed digital control console, foot pedal, set of two wrenches, power cord, cradle and one-year warranty against manufacturing defects.

The new brushless handpiece eliminates the need to change brushes and requires only minimal maintenance if cared for properly.

50,000 rpm motor

The Syncro-Torque IV has 713.8 g/cm of torque and a powerful 50,000 rpm motor good for all dental lab applications, including cutting, grinding, sanding, trimming, etching, carving, polishing and drilling.

The improved digital control console is 4 3/4"W x 4 3/4"H x 7 1/2"L and is lightweight, at just eight pounds. Additionally, a handle is included for portability.

The control console has a reverse direction that enables the use of left or right accessories and the auto-cruise function enables the user to maintain any speed consistently, according to the company.

Foot or knee controls

The Syncro-Torque IV allows the user to use the foot pedal on the ground or mount it to use as a knee treadle. The 500-IV Syncro-Torque IV is also available in 230V, model 500-IVE.

For more information, you can contact Handler at rickladuca@handlermfg.com or at (800) 274-2635.

AD

Pacific Dental Conference

March 9-11, 2017 *Join us in Vancouver, Canada*

save these Dates!

Featured Speakers

 Harold Crossley Pharmacology	 Kristy Menage Bernie Dental Hygiene
 Rosemary Bray Team Communications	 John Alonge Oral Surgery

Stanley F. Malamed Brian Novy
David Clark Jim Grisdale
Karen Davis Cathia Bergeron
John Svirsky Laurie St-Pierre
Ron Zokol Rodrigo Sanchez Cunha
Bobby Birdi Anthony (Rick) Cardoza
Carla Cohn George K. Merjohm
Judy Bendit Manor Haas

Complete speaker roster available for viewing

Fees in Canadian Funds

- ▶ One registration fee allows access to all open sessions – no pre-course selection necessary!
- ▶ Three days of varied and contemporary continuing dental education sessions are offered (something for your whole team)
- ▶ Lunches and Exhibit Hall Receptions included in the registration fee for all three days
- ▶ Over 140 speakers and 150 open sessions and hands-on courses to choose from, as well as the Live Dentistry Stage in the Exhibit Hall
- ▶ Over 300 exhibiting companies in the spacious PDC Exhibit Hall (Thurs/Fri)
- ▶ PDC Lab Expo on Saturday – One day of exhibits area and lectures for Dental Technicians and all Dental team (lunch included)
- ▶ Fantastic shopping, beautiful seawall access within blocks of your hotel, and great spring skiing and golfing




Online registration and program information at...
www.pdconf.com

Tell us what you think!

Do you have general comments or criticism you would like to share? Is there a particular topic you would like to see articles about in Dental Tribune? Let us know by sending an email to feedback@dental-tribune.com. We look forward to hearing from you!

If you would like to make any change to your subscription (name, address or to opt out) please send us an email at c.maragh@dental-tribune.com and be sure to include which publication you are referring to. Also, please note that subscription changes can take up to six weeks to process.

Reduce Appointments with **DIGITAL** Dentures



Precision fit of the CAD/CAM-printed baseplate increases stability during try-in, often reducing the number of appointments before delivery. The digital file is saved for five years.

Simply Natural Digital Dentures™

\$248* per arch
including Kenson® Teeth



Final Dentures



CAD/CAM-Printed Baseplate

U.S. Patent No.: 9,326,834

"The fit of the Simply Natural Digital Dentures™ was amazing. I was pleased with the use of this technique."

– C. Aydin Cabi, DDS
Aurora, Ohio

"The fit was awesome! I love the use of this new technology."

– Gregory Nicholson, DDS
Murfreesboro, Tennessee

"I love the awesome fit of the Simply Natural Digital Dentures!"

– Bruce Wiley, DMD
Greybull, Wyoming

"This technique is great and resulted in the easiest try-in I have ever done."

– Michael Brogna, DMD, FAGD
Bensalem, Pennsylvania

"I just received back my first Simply Natural Digital Dentures case. The patient loves the fit especially; it even improved her ability to speak."

– Adam Myers, DDS
Morgantown, West Virginia

*Price does not include shipping or applicable taxes.
Kenson is a registered trademark of Myerson.

For more information
888-786-2177
glidewelldental.com



**GLIDEWELL
LABORATORIES**

Premium Products - Outstanding Value

New intraoral camera sleeves offer custom fit at economical price

GNYDM
BOOTH
NO. 1110

By Flow Dental Staff

Flow Dental, exhibiting at booth 1110 at the 2016 Greater New York Dental Meeting, is introducing several new imaging products.

First there's new Perfect Fit, which the company describes as "the one and only fully adjustable intraoral camera sleeve you can buy."

With a Perfect Fit sleeve you can create a custom-fit sleeve for virtually any size camera. According to the company, the Perfect Fit is fast, easy to use, and economically priced.

With new Perfect Fit your sleeve will stay on every time, and your lens will always be clean and wrinkle free. Nothing fits your camera like new Perfect Fit from Flow Dental, according to the company.

Flow Dental representatives report that the Perfect Fit sleeves are 30 percent less expensive than other custom-fit camera sleeves.

Flow is also introducing new All Bite, a

universal bite wing holder for all size sensors.

Not only does All Bite flex to hold all sizes, but its unique snap-on/snap-off bite block enables you to move on the fly from a horizontal to a vertical bitewing, in seconds, at chairside. All Bites are economically priced too, according to the company.

Finally there's new Deluxe Cushies. Deluxe Cushies adhere to either the long or short side of your sensor, PSP plate or film to create a soft, cushiony surface your patients will appreciate. The unique key-way design makes positioning your Deluxe Cushie quick and easy too.

William Winters, president of Flow Dental, said, "We understand imaging from a workflow and case-management perspective. Our goal is to enhance — yet simplify — any aspect of the imaging process that we can. Our goal is to make products that are easy to use, easy to adapt, save time, reduce cost, and are a benefit to both the patients and the practitioners."

Perfect Fit sleeves enable you to create a snug, wrinkle-free custom-fit sleeve for virtually any size camera. Photo/ Provided by Flow Dental



AD

THE CLEAR CHOICE

NEW

Which would your patients prefer?



VS.



CLEARMET is the CLEAR choice.

The goal of Clearmet is not only to improve smiles, but more importantly, to improve lives. Patients will be more confident than ever to flash their new appearance!

Some unique Clearmet features include:

- Frame is invisible in the mouth
- Stain resistant, odor-free material
- Clasps are adjustable with a warm three-prong plier, making it easy to adjust chairside
- Can be relined and repaired in saddle areas
- Clasps are tooth bearing, not tissue bearing
- 90% into undercut creates excellent retention
- Can be used with Myerson, TCS, & Valplast machines

#1009225 Clearmet, Small
#1009227 Clearmet, Medium



keystone
industries

US: 1.800.333.3131 | EU: +49 77 31 91 21 01 | www.keystoneind.com

Futar[®] bite registration – 6 times the choice

BUY DIRECT AND SAVE
▶ 3 Futar[®] for \$99.00



Visit us at the
Greater New York Dental
▶ Booth #3537

A complete line of six high-quality Futar[®] bite registration materials saves practitioner time and money; without sacrificing quality. Futar[®] bite registrations will achieve proper centric relation/ centric occlusion registration and minimize any adjustments. Order direct under www.kettenbachusa.com or call 877-532-2123.

www.kettenbach.us