

Endo Opinion

A logical basis to judge endodontic innovations

By Barry Lee Musikant, DMD

The introduction of new technology has as its goal to improve a process that was unable to be achieved, poorly achieved by other means or achieving the same or superior results in a more time and cost-efficient manner. Using these criteria as the justification for the introduction of rotary NiTi, the burden of proof is on demonstrating that at least some of these conditions previously existed.

Certainly prior to the introduction of rotary NiTi, dentists were shaping canals in many cases quite well. One simply has to observe the work of Dr. Herb Schilder to recognize excellence before the implementation of rotary NiTi.¹

Yet, most dentists would admit that achieving that level of perfection is quite challenging using the tools Schilder had to work with. So, while it was possible to attain perfection with what previously existed, the incorporation of rotary NiTi made it possible for more dentists to achieve results approaching the excellence of Schilder.

The justification for the implementation of rotary NiTi is that it produces superior results more simply and in less time than conventional endodontics. Yet to make this an accurate comparison, we have to settle on just what conventional endodontics means.

For most dentists, conventional endodontics means the shaping of canals with a series of K-files used in a stepback manner. Yet, this was not the technique Schilder used to shape canals.²

Rather, he used reamers, instruments whose design includes fewer and more vertically oriented flutes than K-files, instruments that are used conventionally, but not nearly as well known as K-files.

If one considers the use of K-files as the only option if one doesn't adopt rotary NiTi, one also has to admit that the adaptation of rotary NiTi does not eliminate the use of K-files since they are a requirement for glide path creation, a

ET page 2C

Rosenberg stepping down from endo chairmanship at NYU

Dr. Paul A. Rosenberg, professor and chairman of the Dr. I.N. and Sally Quatararo Department of Endodontics at New York University since 1990, has announced that he will be stepping down from the chairmanship once a successor is chosen. Rosenberg will continue to be engaged in teaching and scholarly activities as a full-time faculty member in the Department of Endodontics.

As chairman, Rosenberg has shown true leadership and has compiled a list of significant achievements. His chairmanship has been marked by national and international recognition of NYU's post-graduate program in endodontics as one of the leading programs in that specialty.

The program was one of the first in the nation to introduce implants into an endodontic advanced education curriculum and to include endodontic residents in outreach programs to underserved areas. His residents have provided care in Nicaragua, the Dominican Republic, Grenada, Alaska and Maine. He also introduced NYUCD's first mentoring program for predoctoral students. A highlight of his chairmanship was the naming of the department in honor of Dr. I.N. and Sally Quatararo.

Rosenberg has had other notable achievements, including serving as the NYU College of Dentistry's first associate dean for graduate programs, as a director of the American Board of Endodontics, and as a



Dr. Paul A. Rosenberg has a long record of achievement at NYU. (Photo/Fred Michmershuizen, Dental Tribune)

scientific reviewer for the Journal of Endodontics. He has been recognized with the prestigious NYU Distinguished Teaching Award, the highest award presented for teaching by New York University. He has served as both a senator from the NYU College of Dentistry to the University Senate and as a member of the University Council.

In 2008, the NYU College of Dentistry recognized him with the naming of the Paul and Maxine Rosenberg Education Wing at the College of Dentistry. Rosenberg is a prolific author and lectures frequently at

both the national and international levels. His publications and lectures are focused on the biologic causes and prevention of endodontic pain.

Founded in 1865, New York University College of Dentistry (NYUCD) is the third oldest and the largest dental school in the United States, educating more than 8 percent of all dentists. NYUCD has a significant global reach and provides a level of national and international diversity among its students that is unmatched by any other dental school. ET

(Source: NYUCD)

Endodontic scholarship to provide educator with leadership training

The American Dental Education Association (ADEA), in partnership with the American Association of Endodontists Foundation, will sponsor an endodontic educator's participation in ADEA's premier leadership development program.

The ADEA/AEE Foundation Scholar in the ADEA Leadership Institute will receive a \$25,000 scholarship to participate in the ADEA Leadership Institute, a year-long program that develops faculty members from all elements

of dental education as the future leaders of dental and higher education. In particular, this sponsorship helps support the costs associated with the fellow's participation in the institute.

The award will be presented in a ceremony during the 2012 ADEA Annual Session & Exhibition in Orlando, Fla., March 17-21, 2012.

The mission of ADEA is to lead individuals and institutions of the dental education community to address contemporary issues influencing education, research and the

delivery of oral health care for the health of the public. ADEA's activities encompass a wide range of research, advocacy, faculty development, meetings and communications.

ADEA members interested in learning more about the ADEA/AEE Foundation Scholar in the ADEA Leadership Institute and applying should visit www.adea.org/professional_development/adea_scholarships_awards_fellowships. ET

(Source: ADEA)

← ET page 1C

necessity before rotary NiTi can be safely used. Therefore, at best, rotary NiTi implies the reduction in the use of K-files without replacing them completely. All the problems associated with K-files in their creating the initial canal shaping are still present. It is only the latter part of canal shaping for which the rotary NiTi are responsible.

With the notable improvements that rotary NiTi bring to canal shaping, is it not reasonable to assume that these same improvements would exist whether or not K-files or K-reamers unrelieved and relieved were used?

To make this judgment, one would have to appreciate the beneficial effects of a reamer design in comparison to a K-file.

Certainly, Schilder did have that appreciation. He noted in his papers that reamers engaged less along length reducing the resistance to apical negotiation. He noted the superior tactile perception, their greater flexibility and the increased ability to shave dentin from the canal walls.

Yet are these improvements sufficient to eliminate the need for rotary NiTi? It has been stated many times that 02 tapered stainless steel instruments tend to distort transport canal walls to the outside curve as progressively larger tipped sized instruments become stiffer and stiffer. Equating K-files with K-reamers one would conclude that this is a distinct possibility with either design and the more flexible rotary NiTi instruments would shape these canals to greater dimensions with less chance of distortion.

This progression of thought is undermined by the fact that K-reamers are significantly less stiff than comparably sized K-files, that by incorporating a flat along the K-reamers working length, the cross sectional area is reduced making the instruments even more flexible, that the reduced engagement along length allows the instruments to adapt to the canal walls more readily taking advantage of stainless steel's property of recording curves rather than snapping back to the straight position, a unique NiTi property and detrimental to our goal of distortion-free shaping.

As we can see, the concept of con-

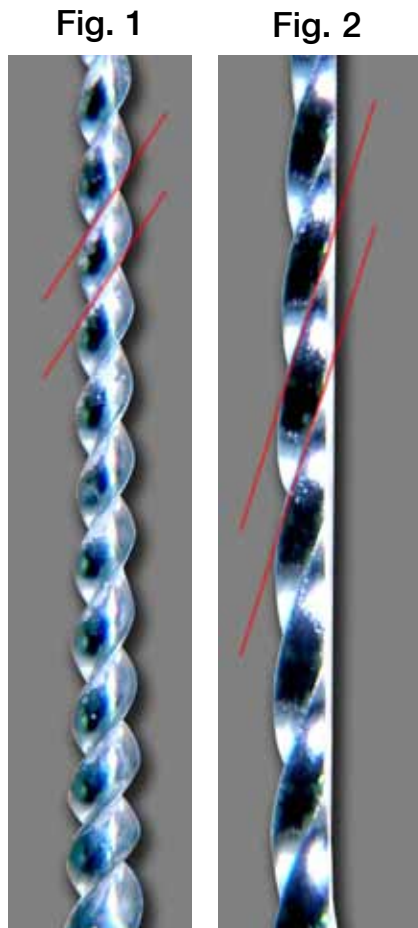


Fig. 1: Photo of a K-File. Note the high number of horizontally oriented flutes. Fig. 2: Photo of a relieved reamer. Note the patented flat side and the decreases number of vertically oriented flutes.

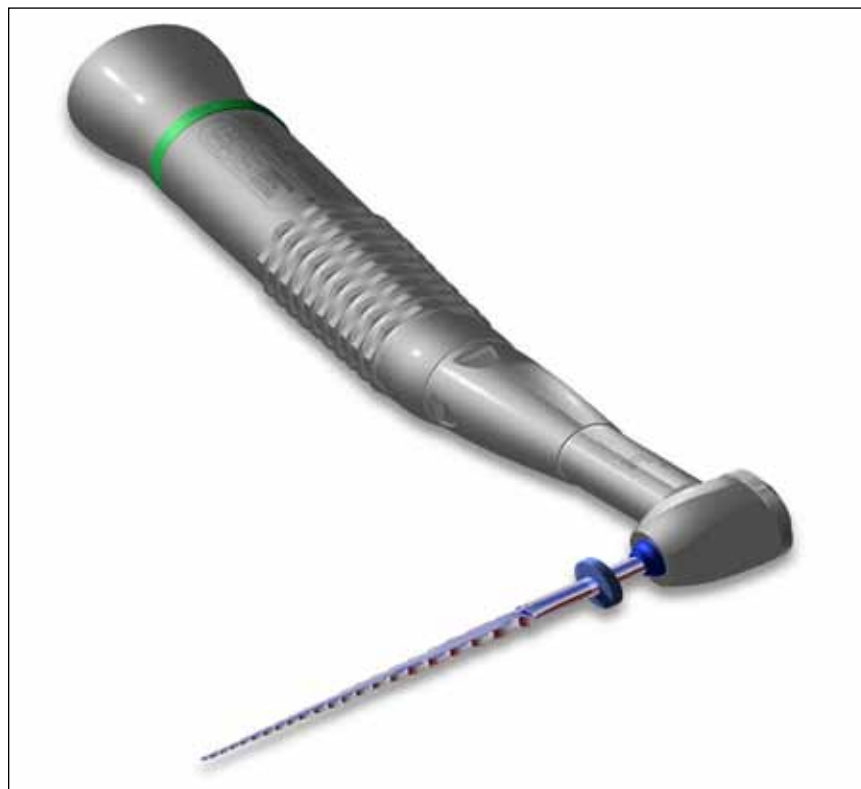


Fig. 4: Illustration of a relieved reamer in a reciprocating handpiece.



Fig. 3: Photo of a relieved reamer which negotiated easily to the apex in a highly curved canal. (Photos/Provided by Dr. Barry Lee Musikant)

ENDO TRIBUNE

The World's Endodontic Newspaper • U.S. Edition

Publisher & Chairman

Torsten R. Oemus
t.oemus@dental-tribune.com

Chief Operations Officer

Eric Seid
e.seid@dental-tribune.com

Group Editor & Designer

Robin Goodman
r.goodman@dental-tribune.com

Editor in Chief Endo Tribune

Frederic Barnett, DMD
BarnettF@einstein.edu

International Editor Endo Tribune

Prof. Dr. Arnaldo Castellucci

Managing Editor/Designer, Endo Tribune & Online Editor

Fred Michmershuizen
f.michmershuizen@dental-tribune.com

Managing Editor/Designer Implant, Ortho & Lab Tribunes

Sierra Rendon
s.rendon@dental-tribune.com

Managing Editor/Designer Dental Tribune U.S. & Canada

Robert Selleck
r.selleck@dental-tribune.com

Managing Editor/Designer Show Dailies

Kristine Colker
k.colker@dental-tribune.com

Account Manager

Humberto Estrada
h.estrada@dental-tribune.com

Marketing Manager

Anna Wlodarczyk-Kataoka
a.wlodarczyk@dental-tribune.com

Marketing & Sales Assistant

Lorrie Young
l.young@dental-tribune.com

C.E. Manager

Christiane Ferret
c.ferret@dtstudyclub.com

Dental Tribune America, LLC

116 W. 23rd St., Suite #500
New York, NY 10011
Tel.: (212) 244-7181
Fax: (212) 244-7185

Published by Dental Tribune America
© 2011 Dental Tribune America.
All rights reserved.

Dental Tribune America makes every effort to report clinical information and manufacturer's product news accurately, but cannot assume responsibility for the validity of product claims, or for typographical errors. The publishers also do not assume responsibility for product names or claims, or statements made by advertisers. Opinions expressed by authors are their own and may not reflect those of Dental Tribune America.

Editorial Advisory Board

Frederic Barnett, DMD (Editor in Chief)
Roman Borczyk, DDS
L. Stephen Buchanan, DDS, FICD, FACD
Gary B. Carr, DDS
Prof. Dr. Arnaldo Castellucci
Joseph S. Dovgan, DDS, MS, PC
Unni Endal, DDS
Fernando Goldberg, DDS, PhD
Vladimir Gorokhovskiy, PhD
Fabio G.M. Gorni, DDS
James L. Gutmann, DDS, PhD (honoris causa),
Cert Endo, FACD, FICD, FADI
William "Ben" Johnson, DDS
Kenneth Koch, DMD
Sergio Kuttler, DDS
John T. McSpadden, DDS
Richard E. Mounce, DDS, PC
John Nusstein, DDS, MS
Ove A. Peters, PD Dr. med dent., MS, FICD
David B. Rosenberg, DDS
Dr. Clifford J. Ruddle, DDS, FACD, FICD
William P. Saunders, PhD, BDS, FDS, RCS Edin
Kenneth S. Serota, DDS, MMSC
Asgeir Sigurdsson, DDS
Yoshitsugu Terauchi, DDS
John D. West, DDS, MSD

**Tell us
what
you
think!**

Do you have general comments or criticism you would like to share? Is there a particular topic you would like to see more articles about? Let us know by e-mailing us at feedback@dental-tribune.com. If you would like to make any change to your subscription (name, address or to opt out) please send us an e-mail at database@dental-tribune.com and be sure to include which publication you are referring to. Also, please note that subscription changes can take up to six weeks to process.

ET Corrections

Endo Tribune strives to maintain the utmost accuracy. If you find a factual error or content that requires clarification, please contact Managing Editor Fred Michmershuizen at f.michmershuizen@dental-tribune.com.

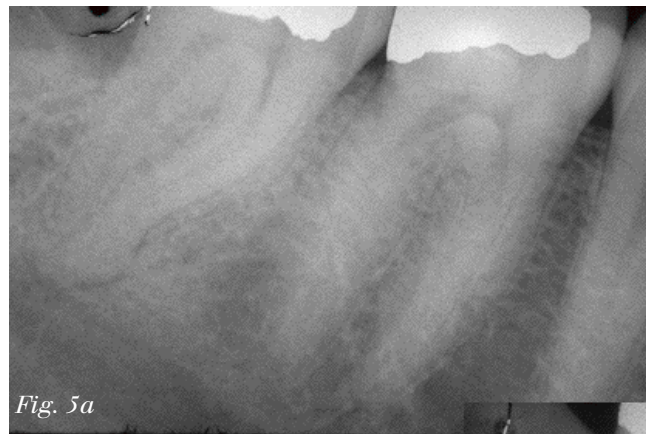
ventional shaping versus the new world of rotary NiTi is a bit more complex than one might originally think. We can state categorically that K-reamers that are relieved are significantly more flexible than comparably sized K-files, that they engage far less along length and provide for a superior tactile perception giving the dentist the ability to know when the reamer is either hitting a solid wall, in a tight, but patent canal or in a canal that is so curved that it requires prebending to negotiate around without distortion. Providing this superior tactile perception sets the relieved reamers apart from K-files.

While acceding to the superior usage of relieved reamers over K-files, wouldn't the incorporation of rotary NiTi after glide path creation make the procedure even more efficient and effective? As its name implies, NiTi instruments are used most effectively in rotation. Yet, using NiTi in rotation increases the chances of instrument separation, a product of either torsional stress or cyclic fatigue or some combination of both.⁵ In contrast, the relieved reamers are used with either a tight watch winding stroke or in a 30-degree reciprocating handpiece, virtually eliminating the two factors that make rotary NiTi vulnerable to breakage.⁴

The K-reamers, routinely shape canals to a minimum of 35, one mm back to a 40 with a 25/06 overlaid taper. After the canal is shaped to a 20, a tapered peeso is used to straighten any coronal curve that may exist generally to within 6 mm of the apex. The relieved reamers 25 thru 40 are mostly limited to shaping the apical 6 mm of the canal. Even highly curved canals are not susceptible to distortion via these thicker relieved reamers because they are still far more flexible than comparably sized K-files, their motion is confined to a short arc that keeps them centered within the canal and the tactile perception clearly tells the dentist if the tip of the instrument is hitting a wall or negotiating a highly curved canal from the straight position.

With resistance mainly defined by what lies ahead of the tip of the instrument, be it from a solid wall or an abruptly curved canal, the dentist knows when to remove the instrument, bend it at the tip and manually negotiate around the curve prior to reattaching it to the reciprocating handpiece followed by rapid negotiation to the apex.

All the rotary NiTi systems make sense if the premise for their use is based on the K-file, an instrument Schilder clearly understood to be a poor design for the function asked of it. None of the rotary NiTi systems make sense, if the better designed reamers — both unrelieved and relieved — are utilized with a short arc of motion either generated manually or in the reciprocating handpiece. Rotary NiTi addresses the challenge of shaping curved canals without distortion better than K-files. They are



Figs. 5a, 5b: Radiographs showing endodontic case performed with relieved reamers in a reciprocating handpiece.

far more flexible than K-files and somewhat more than K-reamers, but lose their luster for non-distortion because of their rebound effect

in curved canals. Always seeking out the straight position, as their tip size and taper increase there is a greater and greater tendency to

shape to the outside wall of curved canals. Most dentists know this and

ET page 4C

AD

NEW
C-MOR™ MIRROR

**HIGH DEFINITION
HIGH REFLECTANCE**


C-Mor with the SAME LIGHT!

More reflected light means you can see more clinically!

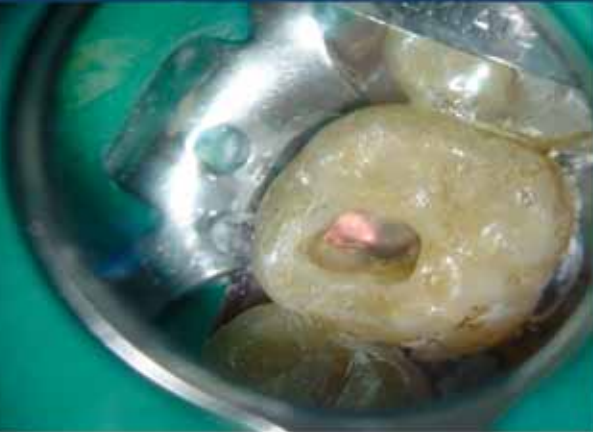
Designed and manufactured using a special hi-tech process to provide you with the highest reflectance and definition available!


Great for those hard to find procedures: root canals, margins, and all fine details can now be seen more clearly!

TRADITIONAL MIRROR




C-MOR MIRROR





89 Leuning St, S. Hackensack, NJ 07606 • 1-800-22-FLEXI • www.edsdental.com



← **ET** page 3C

with the added concern for breakage are generally satisfied in shaping curved canals to a maximum of 25/06 and often a 20/04, a degree of shaping that will minimize breakage and distortion, but also often prove inadequate from the point of view of full debridement and effective irrigation.

An instrument need not be as flexible as NiTi if it is capable of combining the flexibility it does have with the ability to record curves rather than snap back to the straight position. Once the relieved reamer records the curve, it is in effect a passive instrument with the blades shaving the dentin along the length of the canal walls on the downstroke and removing dentin on the upstroke wherever the dentist directs the length of the instrument to contact the canal walls.

In this way a uniform layer of dentin is removed circumferentially retaining the original canal shape and not undermining the thinner walls of oval canals the way it would occur if rotary NiTi was used instead⁵.

That is not to say that relieved reamers could not distort a canal wall. All one would have to do is hit a wall, know you hit the wall and continue to peck aggressive-

‘An instrument need not be as flexible as NiTi if it is capable of combining the flexibility it does have with the ability to record curves rather than snap back to the straight position.’

ly despite all the apical resistance encountered. Distortion would inevitably follow.

However, the relieved reamers offer such superior tactile perception of what the tip of the reamer is encountering that knowing when to remove the reamer, bend it at the tip and manually negotiate around the impediment is obvious making it unlikely that distortions will result.

Schilder knew what he was doing when he chose K-reamers over K-files. He never needed rotary NiTi to create a standard of shaping that rotary NiTi does not



Fig. 6



Fig. 7

Figs. 6,7: Radiographs showing endodontic cases performed with relieved reamers in a reciprocating handpiece.

measure up to. You can achieve that standard in a thoroughly safe manner by using relieved reamers, instruments that Schilder would have noticed negotiate through the canal with even less resistance than non-relieved reamers and in using them with either a tight watch-winding motion or in the reciprocating handpiece they are being used with the tight arc of motion that Schilder would have approved of (Figs. 5a, 5b). **ET**

References

1. Schilder H. Filling root canal in three dimensions. *Dent Clin North Am* 1967;11:723-44.
2. Schilder H. Cleaning and shaping

the root canal. *Dent Clin North Amer* 1974;18:269-296.

3. Li UM, Lee BS, Shih CT, Lan WH, Lin CP. Cyclic fatigue of endodontic nickel titanium rotary instruments: static and dynamic tests. *J Endod.* 2002 Jun;28(6):448-51.
4. Wan J, Rasimick BJ, Musikant BL, Deutsch AS. Cutting efficiency of 3 different instrument designs used in reciprocation. *Oral Surg Oral Med Oral Pathol Oral Radiol Endod.* 2010 May;109(5):e82-5.
5. Wu M-K, Roris A, Barkis D, Weselink PR (200) Prevalence and extent of long oval canals in the apical third. *Oral Surgery, Oral Medicine, Oral Pathology, Oral Radiology and Endodontics* 89, 739-42.

AD

Afghan Dental Relief 1/4 page vertical TK

ET About the author

Barry Lee Musikant, DMD, is a member of the American Dental Association, American Association of Endodontists, Academy of General Dentistry, the Dental Society of New York, First District Dental Society, Academy of Oral Medicine, Alpha Omega Dental Fraternity and the American Society of Dental Aesthetics. He is also a fellow of the American College of Dentistry (FACD). As a partner in the largest endodontic practice in Manhattan, Musikant's 35-plus years of practice experience have established him as one of the top authorities in endodontics.



This season, reward yourself for a job well done



Mention this ad at **Booth 2603** and receive a **FREE Starbucks Gift Card** with your order of \$100 or more!

Earn rewards for your purchase of **Maillefer** hand files, reamers, hedstroms, burs and Gates Glidden drills.

Choose a package that's right for your office ... the more you buy, the more you earn!²

You buy:	Get a Visa gift card valued at:
25 packs	\$20
50 packs	\$50
75 packs	\$75
100 packs	\$125
150 packs	\$175
200 packs	\$250
300 packs	\$375
450 packs	\$550
600 packs	\$750
800 packs	\$1000
1000 packs	\$1250

EARN UP TO
\$1250



Hurry, offers end 12/31/2011

Call your authorized DENTSPLY distributor or call DENTSPLY Maillefer Customer Service at **1-800-924-7393**

DENTSPLY MAILLEFER

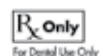
In Endodontics, Quality Has A Name. Maillefer.

MAILLEFER

Now available from DENTSPLY Maillefer: *Sterile K-Files and Flexofiles®*

1 - Starbucks Gift Card Program Rules: Limit 1 gift card per customer. Order of \$100 based on MSRP of DENTSPLY Maillefer products purchased. Starbucks is not a participating sponsor nor a registered trademark of DENTSPLY Maillefer. Offer valid while supplies last.

2 - Visa Gift Card Program Rules: Purchase must be made from an authorized DENTSPLY distributor between **November 1 and December 31, 2011**. Offer must be redeemed by **January 31, 2012** to claim free gift cards. To claim your gift card(s), mail or fax your DENTSPLY distributor invoice to: DENTSPLY Maillefer, 5100 East Skelly Drive, Suite 300, Tulsa, OK 74135, or fax to 800-924-7389. Limit of four redemptions per offer, per customer. Package quantities must come from one invoice. Offer may not be combined with any other DENTSPLY offers. Mix 'n' match permitted, excludes Sterile-K Files and Flexofiles®. All free gift cards fulfilled through DENTSPLY. Please allow 6 to 8 weeks for delivery of gift cards. Offer available in the U.S.A. Visa® is a registered trademark of Visa USA, Inc. and is not a partner or sponsor of this offer.



Endodontists 'strike it rich' in Vegas

By Fred Michmershuizen, Managing Editor

As the saying goes, what happens in Vegas stays in Vegas. But don't tell that to the many endodontists who descended upon the Mandalay Bay Convention Center for the ADA's 152nd Annual Session and World Marketplace Exhibition. What meeting attendees learned — and the many new products that they obtained — will definitely not stay in Vegas.

To help attendees "strike it rich" in Las Vegas, the American Dental Association assembled leaders in dental practice, research, academia and industry to present hundreds of continuing education courses.

The Annual Session, held Oct. 10-13 (Monday through Thursday), offered attendees the choice of more than 260 relevant and topical continuing education courses, including many for those who practice endodontics.

Course titles included: "The New Art of Endodontics: Everything's Changed Except the Anatomy," "Gaining Procedural Mastery with New Tools" and "How to be Safe, Simple and Super-Efficient," among many others.

More than 500 companies offered attendees the opportunity to view and compare the latest dental products and services, many of which were of interest to endodontists.

The reps from Coltene Endo were busy telling meeting attendees about HyFlex controlled memory NiTi files. Jordco was on hand



Dr. Fred Weinstein, from Vancouver, British Columbia. (Photos/Fred Michmershuizen, Dental Tribune)



Erin Rohs, left, and Anne Franch of Coltene Endo offer information to ADA meeting attendees about HyFlex controlled memory NiTi files and other products for endodontists.



Meeting attendees shop the exhibit hall floor at the ADA meeting in Las Vegas.



Ione Booth of Jordco tells meeting attendees about Endoring II hand-held endodontic assistant.

to display its many products for endodontists, including its Endoring II hand-held endodontic assistant. Dentazon Corp. showcased its

Friendo warm vertical condensation device, and SS White offered its EndoGuide precision micro endodontic burs. **ET**

C-Mor Ultra-Bright Front Surface Mirrors

Essential Dental Systems (EDS) recently announced a new product to its line of quality dental devices, C-Mor™ Ultra-Bright Front Surface Mirrors.

These mirrors revolutionize the visual field of dentistry by incorporating a special, high-tech process giving the practitioner the highest reflectance, light and definition available.

With superior reflection, sharpness and contrast, you can literally see more without distortion or cloudiness.

Imagine television without high-definition — now that same groundbreaking technology is available in dental mirrors, allowing for the most enhanced field of vision available with any other mirror on the market.

The C-Mor Mirror, with its 115 percent color reflection factor, will change the way you practice den-



A new, ultra-bright mouth mirror from Essential Dental Systems makes performing all aspects of dentistry easier by allowing dentists to see more clinically. (Photos/Provided by Essential Dental Systems)

tistry by enhancing what you see in a way unimaginable until now.

The C-Mor mirror is available in a convenient four-pack of #5 Stainless Steel Mirror Heads. Additionally offered is a Stainless Steel Mirror Handle.

These products are available immediately from all dental distributors.

For more information on this new product, contact Victoria Reina, sales and marketing manager, at (201) 487-9090.



Traditional Mirror

The C-Mor Mirror

You can see **clearly** now.



The next generation in microscope lighting is now available from Global Surgical. Our new **LED Light Source** provides over 50,000 hours of lighting with controls right at your fingertips. Easily mounts to our G-series and previous scope models. Call Global Surgical for details.

GLOBAL
SURGICAL™ CORPORATION
www.globalsurgical.com

Dental Education Laboratories

Dr. Buchanan's Premier Resource for Endodontic Training

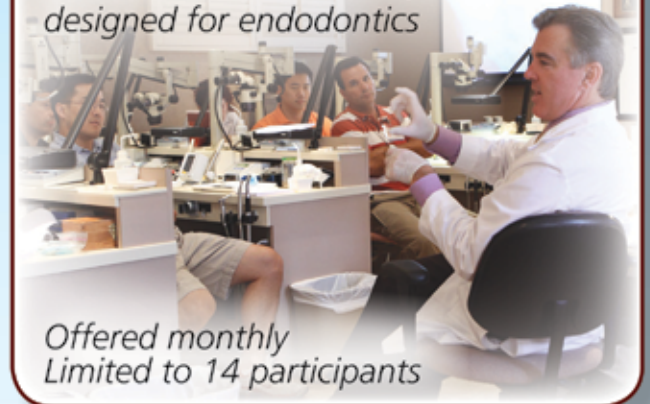
Simple Approach | Advanced Instruments | Expert Training



Featuring the best products in dentistry and the most comprehensive training on their use in endodontics

Hands-on Courses

state of the art laboratory designed for endodontics



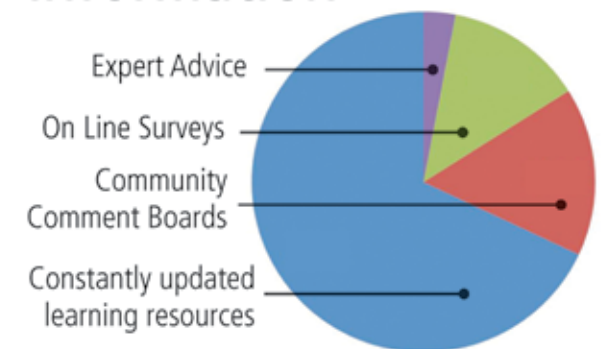
*Offered monthly
Limited to 14 participants*

OnLine Learning

www.endobuchanan.com

- Free articles, charts and technique usage materials
- Free CE Online courses
- 3D atlas of endodontic anatomy
- Answers to clinical questions
- Video downloads

Dynamic Tools and Information



**Upcoming 2-Day Laboratory Course Dates in Santa Barbara, CA:
December 8-9, January 19-20, February 16-17, March 15-16**



Dental Education Laboratories
1515 State Street, Suite 16
Santa Barbara, CA 93101

toll-free: 800 528 1590
worldwide: 805 899 4529
www.endobuchanan.com

ADA CERP® | Continuing Education
Recognition Program

Dental Education Laboratories is an ADA CERP recognized provider.
AGD-Accepted Program Provider - FAGD/MAGD Credit
Dr. Buchanan holds patents for some instruments used in these courses.

ProMark Endodontic Motor

DENTSPLY Tulsa Dental Specialties recently announced the availability of its newest piece of equipment for dental professionals — the ProMark Endodontic Motor.

The ProMark is built upon a tradition of performance and reliability and is the company's most versatile and complete endodontic motor for rotary and reciprocation.

The brushless motor delivers the ample power and consistency of full A/C "mains" power. It's also compatible with a variety of e-type handpieces.

The ProMark is preloaded with the complete library of Tulsa Dental

Specialties' rotary and reciprocation settings and is fully programmable for individual preferences. It can also be updated with future endodontic innovations for a longer return on investment.

Other features include:

- Modern and attractive motor system
- Delivers smooth reciprocation
- Vivid 3-row LCD display
- Integrated rotary and reciprocation file series library
- Auto-sensing global voltage compatibility (110/220 V)
- Well-weighted foot pedal with 360-degree activation



The ProMark Endodontic Motor (Photo/provided by DENTSPLY Tulsa Dental Specialties)

- Upgradable software and file library
- Preset options allow five single file,

- file series, or custom file series
- Handpiece calibration
- Auto-Stop/Reverse/Forward in rotary mode
- Powerful 30,000 RPM brushless motor can be autoclaved
- With recommended 8:1 handpiece (sold separately)
- Speed Settings: 50 to 3,600 RPM in rotary mode
- Torque Settings: 30 to 1000 g-cm

For additional information, visit DENTSPLY Tulsa online at www.tulsadentalspecialties.com or call (800) 662-1202.

Evolution XR6



The Evolution XR6. (Photo/Seiler)

Seiler released a new line of fully redesigned microscopes late last year, with unprecedented success, incorporating the key components of a successful operating microscope, including flawless fluid movement, all apochromatic lenses and the brightest light source on the market.

The Evolution XR6 has truly revolutionized the way the dental microscope performs and operates. With six steps of magnification, standard metal halide illumination and an enhanced movement, it is the ideal choice for the private practice.

Seiler continues to stay at the forefront of fine optics and stands behind its products with a lifetime warranty on the optics and mechanics.

Experience the Seiler advantage.

To learn more about the Evolution XR6 available from Seiler, call (800) 489-2282 to schedule a demonstration, or visit the company online at www.seilmicro.com.

AD

Ready, Set, Autoclave!



A complete file management solution.

Securely bulk-load files into replaceable foam insert.



Close cover and it's ready to process.

The Endoring® FileCaddy® organizer provides a unique bulk storage solution for all endodontic files. Just place multiple files securely into the special foam insert, close the lid and steam autoclave the entire FileCaddy assembly.

Now you're ready for your next appointment. Endoring FileCaddy, bulk file storage solution, REF: EFC-s.

FEATURES & BENEFITS

- Self-Locking Lid
Holds files securely even if dropped or turned upside down
- Autoclavable and Durable
Medical grade resin can withstand repeated steam autoclaving
- 4 Bulk Storage Compartments
Organize files by size and length
- and much more...



Manufactured by Jordco, Inc. USA • www.jordco.com • TEL 800-752-2812 • FAX 503-531-3757

QUALITY DENTAL PRODUCTS MANUFACTURED IN THE U.S.A.

To order, please contact your dental supply dealer.

Or, visit

www.jordco.com

or call 800-752-2812

Another innovative product from Jordco.

Introducing Jordco® Mixing Sticks providing finger-tip control for mixing all cements and composites. Ideal flexibility to assure complete mixing in a convenient, single-use design.

Jordco® Mixing Sticks, 50 sticks per mixed color pack. REF: JMS-s.

