

IMPLANT TRIBUNE

— The World's Dental Implant Newspaper • U.S. Edition —

JUNE 2012 — Vol. 7, No. 6

www.dental-tribune.com

Debating in D.C.

AAID Annual Meeting to focus on various implant treatment options

Washington, D.C., is the site for the annual scientific meeting of the American Academy of Implant Dentistry, from Oct. 3–6. This year, as befits a venue in the nation's capital just a month before the presidential election, the main podium programs will include separate debates on 10 different topics in implant dentistry.

"We're doing the meeting a little different from the past by moving away from the traditional lecture-

► See AAID, page B2

The nation's capital is the site of the AAID's annual meeting, which will take place this October 3–6. Photos/www.sxc.hu

Biomaterial stimulates healing following dental implants

By Dental Tribune International

Researchers have found that blood platelet biomaterial significantly improves the healing process after placement of dental implants. In a case study, they observed beneficial short- and long-term results after the replacement of a fractured central incisor.

According to the authors of the recently published paper, restoration of the maxillary anterior segment following traumatic injuries is very complex.

Even when all steps toward a favorable result have been successful, healing of the tissue can still be an unpredictable

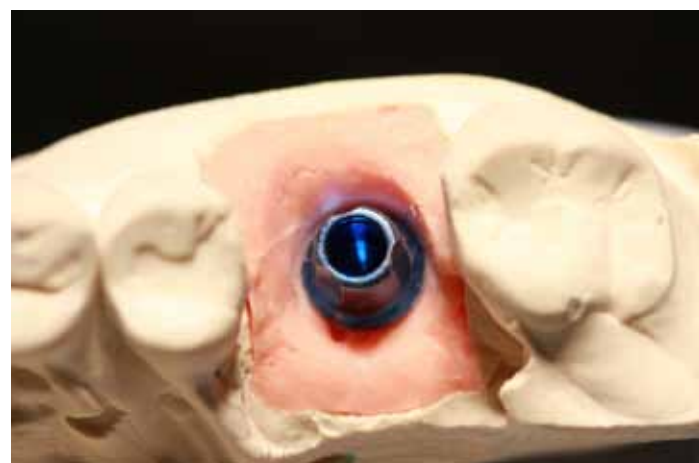
aspect, they said.

In the article, they present a new approach to improving the outcome of anterior implants by using blood platelet concentrates.

The paper reports on a case study of a 45-year-old female patient who had fractured an incisor in a sport-related accident. In an Italian private practice, the broken tooth was extracted and an implant inserted. In addition, a biomaterial of leukocyte- and platelet-rich fibrin (L-PRF) was used.

The scientists observed positive heal-

► See HEALING, page B2



A team of international researchers has tested a blood platelet biomaterial and found that it enhances healing of the tissue after dental implants. Fxl. Photo/ Copyright Julian Chen, 2012/Used under license from Shutterstock.com.

◀ AAID, Page B1

after-lecture format in our main podium sessions," said AAID President James L. Bush, DDS. "It should be one of the liveliest and most provocative AAID meetings ever as our speakers will be debating alternative treatment options through their presentations."

Leading experts will have 30 minutes to present their arguments, followed by a moderated interchange of responses. Session attendees will then be able to vote their preferences electronically following each session.

The debate topics are:

- Implant dimensions: long vs. short
- Esthetics: ceramics vs. gingiva
- Treatment planning: bioengineering vs. design engineering
- Treatment options: comprehensive vs. conformative
- Grafting: plain and simple vs. bells and whistles
- Guided surgery vs. free-hand skilled surgeries
- Implant soft-tissue esthetics: biometrics vs. biomimetics
- Block grafts: autogenous vs. allogenic
- Vertical augmentation: vascularized osteotomies vs. GBR
- Prosthetics: glass ceramics vs. metal ceramics

In addition to the debates, the AAID meeting program includes live implant surgeries, according to Scientific Program Chair Shankar Iyer, DMD, as well as a global symposium featuring expert speakers from the United Kingdom, Spain, Japan, South Korea and other countries.

"Dentists who attend the AAID meeting will leave with new ideas they can implement in their practices right away," Iyer said.

Meeting Chairman John Minichetti, DMD, added that a research symposium at the meeting will cover the latest scientific discoveries related to implant dentistry, and a staff program will offer a wide range of topics, including medical insurance coding for implant procedures, hands-on training in implant components, impressions and temporaries and legal issues.

"Our staff members will enjoy the opportunity to learn more about the clinical and administrative issues they deal with every day, and they'll also gain valuable experience from viewing the live surgeries."

About AAID

AAID is the leading professional society



Leading implant experts will lead lively AAID debates during the group's annual meeting in October.



Dr. John Minichetti

dedicated to maintaining the highest standards of implant dentistry through research and education. The academy's annual meeting is the field's leading venue for cutting-edge, evidence-based implant research presentations and demonstrations of state-of-the-art implantation techniques.

AAID is based in Chicago and has more than 4,500 members. It is the first organization dedicated to maintaining the highest standards of implant dentistry by supporting research and education to advance comprehensive implant knowledge. More AAID information is available at www.aid.com.



Dr. Shankar Iyer



Dr. James L. Bush

'It should be one of the liveliest and most provocative AAID meetings ever as our speakers will be debating alternative treatment options through their presentations.'

◀ HEALING, Page B1

ing of the tissue two days after surgery. They found that the material acts as a bio-membrane that protects the implant from the oral environment. It appears to stimulate the growth of cells and to accelerate gingival healing and maturation.

After seven days, they found that the gingival esthetic profile was well defined.

At six months, they reported a satisfactory final result that was still stable and esthetic after two years.

According to the researchers, L-PRF is simple, inexpensive and easy to prepare in only 15 minutes. Thus, it suits the practical needs of daily implant dentistry, in particular. Moreover, it is free of additives, such as anticoagulant, a substance that prevents the clotting of blood, or chemicals for activation, they said.

The project was conducted by researchers at the University of Geneva's School of Dental Medicine, the State University of New York at Buffalo's Department of Restorative Dentistry and the Chonnam National University's School of Dentistry in Gwangju, South Korea, in collaboration with two practitioners in Italy and Israel.

The study was published in the April issue of the *Journal of Oral Implantology*.

IMPLANT TRIBUNE

PUBLISHER & CHAIRMAN

Torsten Oemus t.oemus@dental-tribune.com

CHIEF OPERATING OFFICER

Eric Seid e.seid@dental-tribune.com

GROUP EDITOR

Robin Goodman r.goodman@dental-tribune.com

EDITOR IN CHIEF IMPLANT TRIBUNE

Sascha A. Jovanovic, DDS, MS
sascha@jovanoviconline.com

MANAGING EDITOR IMPLANT TRIBUNE

Sierra Rendon s.rendon@dental-tribune.com

MANAGING EDITOR SHOW DAILIES

Kristine Colker k.colker@dental-tribune.com

MANAGING EDITOR

Fred Michmershuizen
f.michmershuizen@dental-tribune.com

MANAGING EDITOR

Robert Selleck, r.selleck@dental-tribune.com

ACCOUNT MANAGER

Humberto Estrada h.estrada@dental-tribune.com

MARKETING MANAGER

Anna Wlodarczyk-Kataoka
a.wlodarczyk@dental-tribune.com

MARKETING & SALES ASSISTANT

Lorrie Young lyoung@dental-tribune.com

C.E. DIRECTOR

Christiane Ferret cferret@dtstudyclub.com

Dental Tribune America, LLC
116 West 23rd Street, Suite 500
New York, NY 10011
Phone (212) 244-7181
Fax (212) 244-7185

Published by Dental Tribune America
© 2012 Dental Tribune America, LLC
All rights reserved.

Dental Tribune strives to maintain the utmost accuracy in its news and clinical reports. If you find a factual error or content that requires clarification, please contact Managing Editor Sierra Rendon at s.rendon@dental-tribune.com.

Dental Tribune cannot assume responsibility for the validity of product claims or for typographical errors. The publisher also does not assume responsibility for product names or statements made by advertisers. Opinions expressed by authors are their own and may not reflect those of Dental Tribune America.

EDITORIAL BOARD

Dr. Sascha Jovanovic, Editor in Chief
Dr. Bernard Touati
Dr. Jack T. Krauser
Dr. Andre Saadoun
Dr. Gary Henkel
Dr. Doug Deporter
Dr. Michael Norton
Dr. Ken Serota
Dr. Axel Zoellner
Dr. Glen Liddelow
Dr. Marius Steigmann
Dr. Pankaj Singh

Corrections

Implant Tribune strives to maintain the utmost accuracy in its news and clinical reports. If you find a factual error or content that requires clarification, please report the details to Managing Editor Sierra Rendon at s.rendon@dental-tribune.com.

Tell us what you think!

Do you have general comments or criticism you would like to share? Is there a particular topic you would like to see articles about in *Implant Tribune*? Let us know by e-mailing feedback@dentaltribune.com. We look forward to hearing from you! If you would like to make any change to your subscription (name, address or to opt out) please send us an e-mail at database@dental-tribune.com and be sure to include which publication you are referring to. Also, please note that subscription changes can take up to 6 weeks to process.

The BIG DIFFERENCE?

BRAND X
\$400



INFINITY
\$145

PRICE.

infinity
Dental Implant System

Available in both a tri-cam and internal hex configuration

Surgically compatible with NobelBiocore™ NobelReplace® and Zimmer® Tapered Screw-Vent®

Confidence. It's just like your current implant system.

Compatibility. You can use the same surgical drills, drivers, and prosthetics.

Cost. Instead of paying \$400, you pay only \$145 per implant.



ACE Surgical Supply Co., Inc.
1034 Pearl Street, Brockton, MA

1.800.441.3100 • acesurgical.com



NobelBiocore™ and NobelReplace® are trademarks of Nobel Biocare Services AG. • Zimmer™ and Tapered Screw-Vent® are registered trademarks of Zimmer Dental, USA

THE SYNTHETIC SOLUTION TO BONE REGENERATION

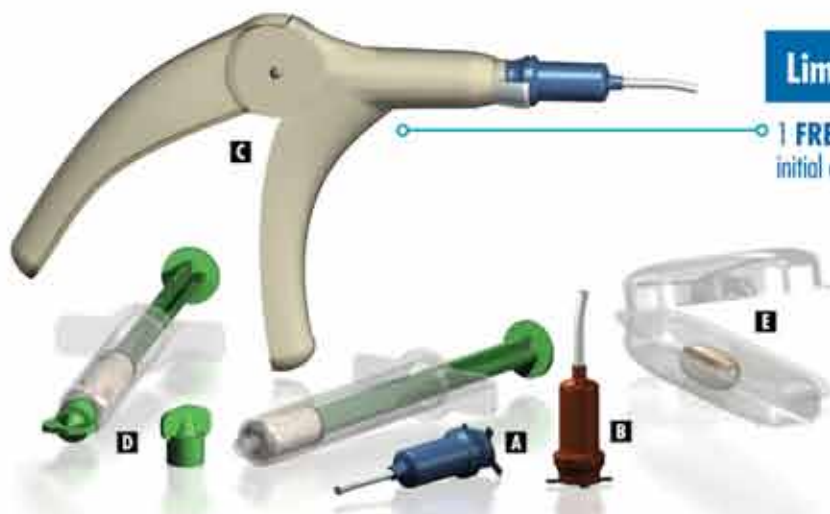
NOVABONE[®]
DENTAL PUTTY

NovaBone® is the only dental bone graft putty that is completely synthetic with excellent and reliable bone formation characteristics. It is indicated primarily for implant related surgeries including but not limited to sinus elevation surgeries, extraction sockets, ridge augmentations, etc. Putty does not require mixing as it is dispensed in a pre-mixed state ready for implantation!

NovaBone Dental Putty is available in multiple delivery mechanisms including syringes, shells & cartridges. The consistency and formulation of the putty is identical in the various delivery systems.

Limited Time Offer

1 FREE Dispenser with initial cartridge purchase.



NOVABONE DENTAL PUTTY CARTRIDGE SYSTEM

A NA3620	0.5cc Cartridges	2/pkg	\$225.00
NA3640	0.5cc Cartridges	4/pkg	430.00
B NA3621	1.0cc Cartridges	2/pkg	410.00
C NA3600	Cartridge Dispenser	each	99.99

NOVABONE DENTAL PUTTY SYRINGE

D NA1610	0.5cc Syringe	1/Pack	\$105.00
NA1611	1.0cc Syringe	1/Pack	190.00
NA1612	2.0cc Syringe	1/Pack	335.00

NOVABONE DENTAL PUTTY CLAM SHELL

E NA0610	0.5cc Clam Shell	1/Pack	\$90.00
NA0660	0.5cc Clam Shell	6/Pack	439.49
NA0611	1.0cc Clam Shell	1/Pack	170.00
NA0622	1.5cc Clam Shell	2/Pack	391.99

Offer expires July 31, 2012.



ACE Surgical Supply Co., Inc.
1034 Pearl Street, Brockton, MA

1.800.441.3100 • acesurgical.com



Tired of Price Increases on Over-Priced Implants?

It's Time for a Reality Check. Choose Implant Direct for...
Innovative Products. Great Value. Highest Customer Satisfaction¹

Legacy™3 Implant

All-in-1 Packaging includes implant, abutment, transfer, cover screw & healing collar
\$175 vs \$621² from Zimmer Dental

✓ **Reality Check**
Zimmer Customers
Save \$446 with Legacy3



SwishPlant™ Implant

All-in-1 Packaging includes implant, straight abutment/transfer, cover screw & healing collar
\$200 vs \$705² from Straumann*

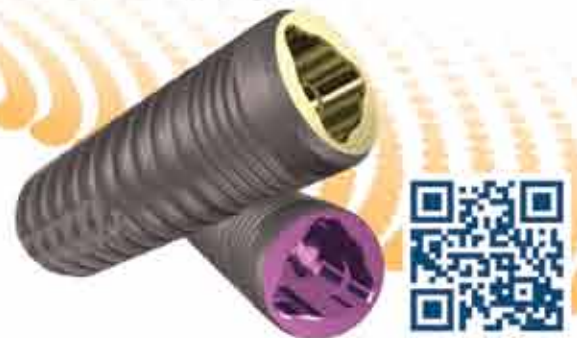
✓ **Reality Check**
Straumann Customers
Save \$505 with SwishPlant



ReActive™ Implant

All-in-1 Packaging includes implant, abutment, transfer & cover screw
\$200 vs \$694² from Nobel Biocare™

✓ **Reality Check**
Nobel Customers
Save \$494 with ReActive



Implant Direct's New Las Vegas Training Center

Implant Direct offers an extensive list of educational opportunities at its Las Vegas Training Center with computers at each desk for Image Guided Surgical Training, models/mannequins for hands-on training and a four chair dental office for live surgical demonstrations.

Debut Courses: July 20-22 | September 28-30 | Nov 30-Dec 2

For information on courses and dates, both in Las Vegas and throughout the US, visit Implant Direct's website or use your smart phone to link directly to our Educational Section.



EARN 2 CE CREDITS FREE: View Online Lecture with 3D Graphic Videos & Answer 13 Test Questions



The Changing Reality of Implant Dentistry

Presented by Dr. Gerald Niznick

Technological advances and economic factors have shifted the implant industry toward affordable care.

Continuing education credits may not apply toward license renewal in all states. It is the responsibility of each participant to verify the requirements of his/her state licensing board(s).

Live surgical demonstrations not available at all courses.

All trademarks are property of their respective companies.

¹Satisfied among Current and Former Users, by Company US CD7 Millium Research Group & Decodon Research, Inc., Company.

²Price comparison based upon US list prices of comparable items as of February 2012.

*Compatibility claims based upon Straumann's Tissue-level implants.

⁴Terms and conditions apply. Visit www.implantdirect.com for details.

⁵Legacy™3 Implant 3.0 and 3.5, and SwishPlant™ are tapered. Zimmer also has SwishPlant straight.

⁶Buser et al. Int J Oral Maxillofacial Implants 2005; 20: 677-686.

⁷Comparison based upon Straumann's CARES Custom Zirconia Abutment. Price varies depending upon the laboratory.

⁸Must be a first-time customer. Limit one offer per practice (dentist, dental office, group practice or partnership). Terms and conditions apply.

100% Surgical and Prosthetic Compatibility with Straumann® Implants³

Replacement Warranty plus \$500 for Straumann Implants used with Swish Abutments¹



\$150

Reality Check
Straumann Customers
All-in-1 Packaging includes implant, compatible carrier, cover screw & healing collar

\$150 vs \$486² from Straumann®
Save \$336



Watch 12 minute 3D Graphic Video
Scan code or visit www.swishsystem.com

SwishPlus Advantages⁵:

Internal Octagon (Niznick US Pat. #4,960,381 Licensed to Straumann)

Prosthetic compatibility with Straumann's Tissue-Level implants (Standard, Standard Plus and Tapered Effect) Internal square broached in flats of octagon for fixture-mount engagement (Pat. Pend.)

- 1 Only 1mm of 2mm neck remains smooth for bone preservation⁶ with deeper placement
- 2 Micro-grooves for improved tissue attachment & increased surface area
- 3 Progressively-deeper threads for increased initial stability and surface area
- 4 Vertical self-tapping grooves for ease of insertion and increased initial stability
- 5 Tapered apical end to initiate self-tapping insertion
- 6 Carrier demarcations align with flats of octagon for use with indexed Swish abutments
- 7 Frictional carrier engages internal square, eliminating need for counter torque on removal

Carrier

Compatible with Straumann tool & standard ratchet



	Solid Abutment Kit	Straight Narrow Abutment	Straight Soap-Oet	Straight Contoured	15° Angled Contoured	Gold/Plastic Abutment	Zirconia/Ti Abutment	Angled Zirconia/Ti Abutment	Plastic Temporary Abutment	Ball Attachment	GPS™ Attachment	Angled GPS™ Attachment	Multiple-Unit w/Cap & Transfer	
Our price	\$100	\$85	\$85	\$85	\$85	\$100	\$120	\$120	\$35	\$107	\$100	\$120	\$85	\$100
Straumann ⁸	\$240	\$190	\$190	\$195	\$195	\$255	\$339 ⁷	\$339 ⁷	\$65	\$275	\$195	N/A	\$180	N/A

Introductory offer for Straumann Customers: Three FREE implants from the company that dares to compare.⁸

Astra Tech presents new OsseoSpeed data from the global clinical research program at World Congress

During the Astra Tech World Congress, held in Gothenburg, Sweden, May 9-12, Astra Tech presented new data from its global clinical research program, confirming yet again the benefits of the Astra Tech Implant System™.

"We are very proud to present continuous positive data from our global clinical research program at the Astra Tech World Congress. For us, it is of utmost importance that clinicians feel confident when using our implant system to care for their patients. Ninety percent of all dental implant systems available today have no clinical documentation," said AnnaKarin Lundgren, head of global scientific management.

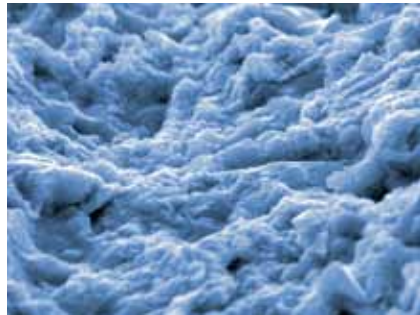
Five-year clinical evidence for early loading of OsseoSpeed implants

In a recently published prospective study by H. Schliephake et al¹, the five-year clinical outcome from 44 patients treated with 123 implants placed in the posterior mandible and early loaded was presented. The study focused on clinical efficacy; hence, survival rate, implant stability and marginal bone level change were evaluated. All implants survived the whole study period, giving a 100 percent implant survival rate. Implant stability, by means of ISQ values, increased during the first year and the marginal bone level change was minimal, ending in a total mean change from implant placement to five-year of -0.08 mm.

The authors concluded that implants with the fluoride-modified OsseoSpeed surface provide auspicious results for the early loading protocol in the posterior mandible.



OsseoSpeed Implants. Photos/Provided Astra Tech Dental



OsseoSpeed surface magnification.

Evaluation of OsseoSpeed 3 mm narrow implant

A prospective multicenter study by P. King et al², included 69 patients, together treated with a total of 97 implants. The OsseoSpeed narrow implants were replacing a single tooth in the anterior region, and the study was designed to evaluate clinical performance using one stage surgery with an early loading protocol. Two-year follow up indicates that treatment with OsseoSpeed TX 3.0 implants is a safe and predictable treatment option in the anterior region when interdental space is limited. Soft tissue and marginal bone levels were well-preserved.

Marginal bone support around OsseoSpeed Profile implants

In a prospective multicenter study by R. Nölken, et al³, 65 patients with a need of single tooth replacements were included. The aim of the study was to clinically and radiographically evaluate the position of lingual, buccal and interproximal marginal bone support after placing and restoring a single OsseoSpeed Profile implant in sloped healed ridges.

After one year, the results revealed small marginal bone level alterations indicating that the OsseoSpeed Profile implant is a predictable treatment option where the alveolar crest anatomy is sloped in a lingual to buccal direction.

Astra Tech products supported by more than 600 publications

Astra Tech Dental has reached an important milestone: the product portfolio is now supported by more than 600 articles, published in renowned, peer-reviewed, scientific journals.

The articles are written by scientists and clinicians from all over the world and have been scrutinized by independent editorial review board members before being accepted for publication. With this clinical evidence, clinicians can expect predictable and excellent treatment outcomes when using Astra Tech Implant System.

References

1. Schliephake H, Rodiger M, Phillips K, McGlumphy EA, Chacon GE, Larsen P. Early loading of surface modified implants in the posterior mandible — 5-year results of an open prospective non-controlled study. J

Clin Periodontol 2012;39 (2):188-95. Abstract in PubMed.

2. King P, Galindo-Moreno P, Maiorana C, Schramm A, Øland J, Nilsson P. Clinical and radiographic evaluation of early loaded narrow diameter implant — a 2-year follow-up. Astra Tech World Congress Gothenburg, Sweden, May 9-12, 2012.
3. Nölken R, Donati M, Fiorellini J, Gellrich N-C, Parker W, Berglundh T. Marginal bone support at OsseoSpeed Profile implants. Astra Tech World Congress Gothenburg, Sweden, May 9-12, 2012.

View complete Astra Tech Publication list on www.astratechdental.com

About Astra Tech

Astra Tech AB is a global leader in dental, surgical and urological products, services and support. Since Sept. 1, 2011, the company is a part of DENTSPLY International, Inc., a global leader in professional dental products. Astra Tech has continually developed market-leading solutions to meet health-care needs based on user and medical community input since 1948. Ongoing research and development is aimed at finding new ways to support caregivers and improve quality of life for patients worldwide.

Astra Tech headquarters is located in Mölndal, Sweden, with production facilities in Sweden and North America. The company is represented globally by 16 subsidiaries and selected local distribution partners. Astra Tech has 2,200 employees worldwide, and the revenue in 2011 was SEK 3.9 billion. The company invests 5 percent of its revenues annually in research.

gIDE to host 4-day implant hands-on workshop

From July 24-27, Global Institute for Dental Education (gIDE) will host its quarterly four-day Advanced Implant Therapy certificate course and implant hands-on workshop in Los Angeles. Participants will learn the latest implant techniques for successful soft-tissue management, extraction site grafting, ridge preparation and regeneration for implant placement.

Esthetic implant procedures and sinus grafting are also taught, all through the use of didactic, comprehensive and clear clinical protocols. This implant course offers a hands-on workshop and live-patient surgery that can be taken separately or together as a comprehensive update program.

gIDE's workshop is an essential short-term implant program to get participants to the next level in implant surgery and to improve confidence in hard- and soft-tissue grafting, as well as the management of complications.

Founded in 2003 in Los Angeles, gIDE is now equipped with a high-tech, modern training center fully integrated with an advanced surgical suite and complete

with audio/video capabilities. Previously limited to 16 participants, the remodeled institute now accommodates up to 25 professionals with a large-screen viewing of up-close surgery.

gIDE moved its global headquarters in June 2006 to a 4000-square-foot recording studio, formerly home of the famous California band "The Beach Boys." It has now been transformed into a modern facility with studios for live broadcast events held worldwide, production of clinical videos and onsite training center for hands-on courses and live surgical demonstrations.

gIDE's vision of the innovative training center is for the clinician to experience learning via theory, hands-on and live surgery with inspiration of the high-tech surgical suite to instill a desire to realize achievable goals.

Registrants receive one clinical video DVD per course day as review material.

For more information regarding gIDE's hands-on training and workshops, please visit www.gidedental.com or e-mail info@gidedental.com.



Hands-on workshops are available at gIDE's new modern training center in Los Angeles. Photo/Provided gIDE

The world's first Android-based control screen in dental laser industry

PerioLase MVP-7 for the LANAP protocol brings together advanced science and developing technology

Millennium Dental Technologies announces the first laser in the dental industry to incorporate an Android™-based digital display and control system. The PerioLase® MVP-7™ for the LANAP® protocol combines its advanced laser components with the latest LCD display technology for the optimum operating experience.

The enhanced display integrates the absolute latest developments in the tablet industry into the PerioLase MVP-7 digital dental laser and also provides a consistent platform to continually take advantage of the explosive growth and development in the electronics industry.

Millennium Dental Technologies is breaking the paradigm of the planned obsolescence built into the manufacturing of capital equipment within the dental industry. By integrating the open-platform Android operating system, the PerioLase MVP-7 will enable new display device integration and upgrades without the pur-

chase of a new laser.

"Currently, in the industry, a device upgrade means a completely new laser at high cost. Millennium's constant practice of 'Kaizen' has allowed us to break through this paradigm and provide true device upgradability," said Robert H. Gregg II, DDS, president and co-founder of Millennium Dental Technologies.

The new streamlined user interface increases usable display space to allow the practitioner to focus on the clinical procedure, with intuitive operating controls and engaging graphics. The 360-degree mounting system increases clinician comfort during the procedure, with a wide-range viewing angle and increased flexibility of laser placement in the operatory.

"Operating system upgrades can be done in the field through encrypted hardware authentication, with less downtime to the clinician," said Patrick McCormick, CFO of Millennium Dental Technology.

"This enables clinicians to maintain patient treatment schedules and efficiency, while giving them the power to stay abreast of the exploding high-resolution, flat screen display technology."

Chief Technical Officer Delwin McCarthy, DDS, explains: "The transformation to the Android-based platform is fully backward compatible. All existing PerioLase MVP-7 laser devices can be merged with the advanced display and control, an important benefit to our LANAP-trained clinicians."

Millennium Dental Technologies is exploring forward-compatible upgrades including evolution to Electronic Medical Records (EMR), the Obama initiative for integration of electronic dental records and systems, and seamless communication with case management software.

The display upgrade is included at no additional cost for all orders that take delivery for the next 90 days.

The PerioLase MVP-7, a free-running

pulsed Nd:YAG laser, was developed specifically to support the LANAP protocol and, through product relevancy and a dedicated management team, is the longest-lasting laser system still being sold today in the history of the dental laser device industry. The LANAP protocol is a patient-accepted, evidence-based laser gum disease surgery, developed with the purpose of helping patients save their natural teeth and avoid the fear and pain associated with traditional gum surgery.

For more information, visit www.LANAP.com.



The new PerioLase. Photo/Provided by Millennium Dental Technologies

AD



World Class Resort

Vail Mountain Marriott

Vail, CO

January 30th - February 3rd

2013

Speaker Lineup:

- Dr. Craig Misch
- Dr. Sascha Jovanovic
- Dr. Scott Ganz
- Dr. John Russo
- Dr. Dwayne Karateew
- Professor Georg-H Nentwig

- Dr. Istvan Urban
- Dr. Stavros Pelekanos
- Dr. Dan Cullum
- Dr. Giles Horrocks
- Dr. Mitra Sadrameli

Call now for a pre-meeting registration special!
1-303-268-5400

Save the date!

Meisinger Meisinger USA, L.L.C.
7442 South Tucson Way, Suite 130 • Centennial, Colorado 80112 • USA
Tel: +1 (303) 268-5400 • Fax: +1 (303) 268-5407
www.meisingerusa.com • info@meisingerusa.com • www.bone-management.com

Meisinger High Altitude Bone Management Winter Camp

Sterngold Dental now offers auto-mixing resin cement



Sterngold's auto-mixing resin cement.
Photo/Provided by Sterngold

AD

Save the Date!

ICOI'S WORLD CONGRESS XXIX

ORLANDO *Florida*

World Center Marriott Hotel • September 20-22, 2012

Plan to attend our 29th World Congress as the ICOI turns 40!!

ICOI

40 YEARS OF
IMPLANT EDUCATION
1972-2012

Sponsored by:

ICOI

ADIA

ADA CERP® Continuing Education Recognition Program

ICOI is an ADA CERP Recognized Provider. ADA CERP is a service of the American Dental Association to assist dental professionals in identifying quality providers of continuing dental education. ADA CERP does not approve or endorse individual courses or instructors, nor does it imply acceptance of credit hours by boards of dentistry.

PACE Program Approval of the Continuing Education

ICOI is designated as an Approved PACE Program Provider by the Academy of General Dentistry. The formal continuing education programs of this program provider are accepted by AED for Fellowship, Mastership and membership maintenance credit. Approval does not imply acceptance by a state or provincial board of dentistry or AGD endorsement. The current term of approval extends from April 1, 2010 to March 31, 2014. Provider ID# 217238.

Sterngold now offers ERA Lock, an auto-mixing, filled composite resin cement, which is specially formulated to provide a high-strength bond with titanium components. ERA Lock cement is also eminently suitable for use with dentin bonding agents in the final cementation of inlays, crowns, bridges and intraradicular posts. To order or for more information, call Sterngold at (800) 243-9942 or visit www.sterngold.com.

About Sterngold Dental

Founded in 1897, Sterngold Dental is a world leader in dental products and specializes in alloys, attachments, implants and restorative systems. Examples are the Stern ERA family of resilient dental attachments and the Natural Profile Abutment System for esthetic restoration of osseointegrated implants. For more information, visit www.sterngold.com.



Misch Power Elevators. Photo/Provided by Surgical Solutions

Misch offers power elevators

Misch's new Power Elevators feature a second-generation cutting-edge design, which will allow clinicians to convert extraction procedures into a fast, pleasant and routine procedure.

The claw and fulcrum dental extraction instruments may be used on any tooth, in any condition.

Two universal "opposing" instruments utilized in tandem allows easy access to all 32 teeth — elevating to the lingual and to the buccal. According to Dr. Carl Misch, "Extracting teeth, in any condition, and most root-tips will never be the same."

The company says its instruments beat competitors' in price, predictability and promise.

The products are guaranteed or your money back; no questions asked. For more information, visit www.surgicalsolutionsusa.com/mischPowerElevators.html or contact (877) 266-3360.

Sirona introduces inLab Software 4.0

New inLab Software 4.0 delivers improved performance to entire restorative process

Sirona Dental Systems, a company that pioneered digital dentistry more than 27 years ago and one of the world's leading producers of dental CAD/CAM systems, has launched a major software upgrade that effortlessly handles everything from single-unit crowns to complete smile makeovers with the touch of a button.

According to Norbert Ulmer, director of Laboratory CAD/CAM for Sirona: "The new inLab® Software 4.0 is the most significant and sophisticated inLab software release. It propels the inLab system to new heights with outstanding new features designed for faster and easier navigation through design steps and work direct-on-tooth tools. This is a major redesign of the inLab software platform."

Matt Roberts, CDT with CMR Dental Lab, says: "inLab Software 4.0 is a game-changer for digital dentistry. It's now even easier to artistically modify the design to fit the specific esthetic and functional needs associated with each case!"

Among the many enhancements made possible with inLab Software 4.0 are the following:

- *Intuitive graphical interface:* The inLab software guides you confidently through the design process. See exactly what step you're working on, what's next and what you've already accomplished. Readily "jump" from one design step to the next — or even go back a step or two — without having to "undo" the work you've already done.

- *Multiple restoration design:* Work on as many different restorations and indications as you want and at the same time — including in multiple quadrants and opposing arches, from single units to full-mouth cases.

- *Design tools for total control:* Design tools can now be executed directly on the tooth when performing functions such as

adding or removing material, rotating or positioning the restoration, or expanding or reducing tooth size. Grab and move the tooth, and use your digital porcelain brush to design your crown. This provides greater control and a more natural, hands-on feel to the computer design process.

- *Widest range of indications:* Your software capabilities are as endless as this list, such as anatomically shaped copings and bridges, to full-contour crowns, inlays, onlays, veneers, digital temporaries, multilayer/split-file designs, Maryland bridges, customized abutments, model-building software, bars, attachments, stressbreakers, stack milling, digital cut-backs, diagnostic wax-ups and wax patterns, and there is always another soft-


ware update just around the corner.

The increased productivity and efficiency delivered by inLab Software 4.0 is a bottom-line booster, as well. Chad Rogers has been an inLab user for nearly a decade, and was also among the first to use inLab Software 4.0.

"For me, Sirona has made dental CAD/CAM more predictable and profitable than ever," he said. "With the introduction of the new inLab Software 4.0 coupled with the inEos® Blue and the inLab MC XL, my laboratory is quickly changing and becoming a profitable machine."

For more information about inLab Software 4.0, contact your Sirona representative, call (855) INLAB4U or visit www.inLab.com.

AD



The Alta MLS. Photo/Provided by Dental Photonics

New laser system from Alta

The Alta™ MLS introduces a laser system with no obsolescence. After you purchase the base console, you can add the modular units at your discretion.

It features the world premiere of Thermo-Optically Powered (TOP™) Surgery, the radically new Automatic Power Control (APC™) Mode with AutoStop™ and SureStep™ tip initiation. With TOP Surgery, you cut like a CO2 laser but with greater control, tactile feedback and minimal collateral thermal damage. APC provides user-defined constant operating temperature at the surgical tip.

Call (781) 754-7900 or visit www.altams.com for more information.

Auxiliaries: Are you implant certified?

- Patient Questions
- Insurance Coverage
- Tracking
- Operatory Set Up
- Radiographic Protocol
- Assessment Parameters
- Hygiene Instrumentation
- Communications with the Lab



Implant Training Makes all the Difference!



Dental Implant Certification Programs

Choose from Dental Assisting, Dental Hygiene, Practice Management or Implant Coordinator

September 20-22, 2012
ICOI World Congress XXIX • Orlando, FL




INTERNATIONAL CONGRESS OF ORAL IMPLANTOLOGISTS

For more information and to register visit our website:
www.icoiorlando2012.org