

implants



the international C.E. magazine of oral implantology

1 2013

_c.e. article

Utilizing the
Tempcap abutment
with CAD/CAM

_events

Academy of
Osseointegration
heads to Tampa

_industry

Implant position
in the esthetic zone

Stay on top of new techniques, products with *implants*



Publisher Torsten Oemus

_Thanks to rapidly advancing technology, the field of implant dentistry is always changing and evolving. Clinicians must be vigilant in their efforts to keep up with new techniques, new products and new technology that could affect treatment planning.

And that's what makes the publication you are holding right now so valuable.

For this issue of *implants*, we've assembled a collection of articles from a variety of respected names and companies in dentistry. These expert clinicians are sharing their first-hand knowledge and expertise with you. In this issue, you can read about utilizing the Tempcap abutment with CAD/CAM, and you can also learn about the lateral antrostomy technique for maxillary sinus augmentation. We also have news on implant events and products.

But there's more.

Every issue of *implants* magazine also contains a C.E. component. By reading the set of articles (beginning on Page 6) on "Utilizing the Tempcap abutment with CAD/CAM" by Dr. Kalman and "Lateral antrostomy technique for maxillary sinus augmentation" by Drs. Batal and Norris and then taking short online quizzes about these articles at www.DTStudyClub.com, you will gain one ADA CERP-certified C.E. credit.

Keep in mind that because *implants* is a quarterly magazine, you can actually chisel **at least** four C.E. credits per year out of your already busy life without any more lost revenue and time away from your practice.

To learn more about how you can take advantage of this C.E. opportunity, visit www.DTStudyClub.com. Annual subscribers to the magazine (\$50) need only register at the Dental Tribune Study Club website to access these C.E. materials free of charge. Non-subscribers may take the C.E. quiz after registering on the DT Study Club website and paying a nominal fee.

I know that taking time away from your practice to pursue C.E. credits is costly in terms of lost revenue and time, and that is another reason *implants* is such a valuable publication.

I hope you enjoy this issue and that you get the most out of it.

Sincerely,



Torsten Oemus
Publisher

An affordable implant solution to grow your referral base



\$695*

Includes everything
you need to restore a
missing tooth

INCLUSIVE®

It's everything you and your referring
dentist need for the perfect implant case.



BioTemps®
provisional crown
included



Custom healing
abutment
included



Final BruxZir® or
IPS e.max® crown
included



Custom
temporary abutment
included



Custom
impression coping
included



Final Inclusive®
Custom Abutment
included



Surgical drills and
Inclusive® Tapered Implant
included



*Price does not include shipping or applicable taxes.
#Not a trademark of Glidewell Laboratories.

FOR MORE INFORMATION
888-786-2177
www.glidewell dental.com

INCLUSIVE®
TOOTH REPLACEMENT SOLUTION



Inclusive custom healing abutment at implant placement



Contoured soft tissue sulcus after healing



Buccal view of final restoration at delivery

Simple, Convenient, Affordable

Implant surgeons are increasingly looking for new and unique ways to be more restoratively driven and better support their referring dentists on the crown & bridge side of treatment. Glidewell's new Inclusive Tooth Replacement Solution was designed to support this paradigm shift by providing everything that a restoratively driven surgeon needs to ensure success for his referring dentists. Reward your referring doctors with all lab costs for the final abutment & crown restoration pre-paid.

NOW COMPATIBLE WITH MORE IMPLANT SYSTEMS — OPEN PLATFORM

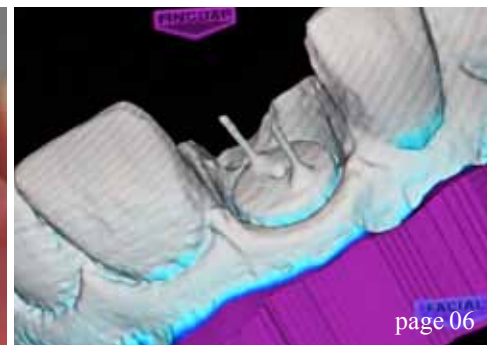
- Astra Tech®
OsseoSpeed®
- Biomet 3i® Certain®
- Nobel Biocare®
Brånemark System®
- Nobel Biocare®
NobelActive® &
NobelReplace®
- Straumann® Bone Level®
- Zimmer® Screw-Vent®

In the event that your implant needs replacement, we include a backup
Inclusive Tapered Implant and final drill for your peace of mind.



**GLIDEWELL
LABORATORIES**

Premium Products - Outstanding Value



| c.e. articles

- 06 Utilizing the **Tempcap abutment** with CAD/CAM
_Les Kalman, DDS
- 12 **Lateral antrostomy technique** for maxillary sinus augmentation
_Hussam Batal, DDS, DMD, and Olena Norris, DDS

| events

- 24 **The Academy of Osseointegration** heads to Tampa

| industry

- 28 **Implant position** in the esthetic zone
_Siamak Abai, DDS, MMedSc

| about the publisher

- 33 _submissions
- 34 _imprint



| on the cover

Cover image provided by Dr. Kalman



ATLANTIS™

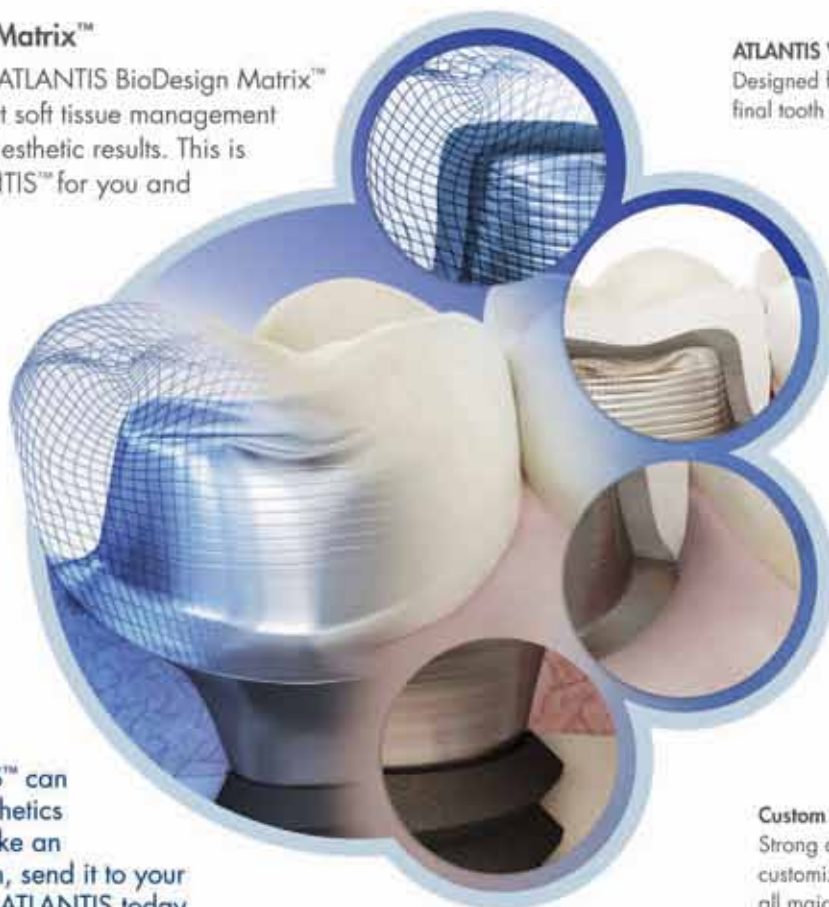
Abutments as individual as your patients

Available for all major implant systems and in your choice of titanium, gold-shaded titanium and four shades of zirconia, ATLANTIS™ patient-specific

CAD/CAM abutments help to eliminate the need for inventory management of stock components and simplify the restorative procedure.

ATLANTIS BioDesign Matrix™

The four features of the ATLANTIS BioDesign Matrix™ work together to support soft tissue management for ideal functional and esthetic results. This is the true value of ATLANTIS™ for you and your patients.



ATLANTIS VAD™

Designed from the final tooth shape.

Natural Shape™

Shape and emergence profile based on individual patient anatomy.

Soft-tissue Adapt™

Optimal support for soft tissue sculpturing and adaptation to the finished crown.

Custom Connect™

Strong and stable fit – customized connection for all major implant systems.

Find out how ATLANTIS™ can bring simplicity and esthetics to your practice. Just take an implant-level impression, send it to your laboratory and ask for ATLANTIS today.



800-531-3481 • www.dentsplyimplants.com

Utilizing the Tempcap abutment with CAD/CAM

Author Les Kalman, DDS

c.e. credit part I

This article qualifies for C.E. credit. To take the C.E. quiz, log on to www.dtstudyclub.com. Subscribers to the magazine can take this quiz for free and will be emailed an access code after the magazine's release. If you do not receive the code, please write to support@dtstudyclub.com. Non-subscribers may take the quiz for \$20. You can access the quiz by using the QR code below.



Combination of Tempcap, in-office CAD/CAM and e.max allows for final restoration

Abstract

The E4D in-office CAD/CAM unit has been employed in an investigative laboratory study to design and mill an unconventional IPS e.max restoration that would be coupled with the Tempcap as a final implant-supported crown. The combination of the Tempcap, in-office CAD/CAM procedures and e.max allows the clinician to create an immediate final restorative product with ideal characteristics.

The procedure is a simple, efficient and effective solution for the restoration of implants.

a necessary procedure. The temporization allows for surgical healing, preservation of the gingival architecture and, most important, replacement of a tooth in the edentulous space for patient acceptance. Several techniques for the temporization exist, but the process has proved to be time-consuming and frustrating. The Tempcap abutment and the process for temporization were created to provide a simple yet effective approach.¹ With the advent of CAD/CAM technology and e.max, the potential of the Tempcap to act as a final abutment seemed likely and suitable for investigation.

Introduction

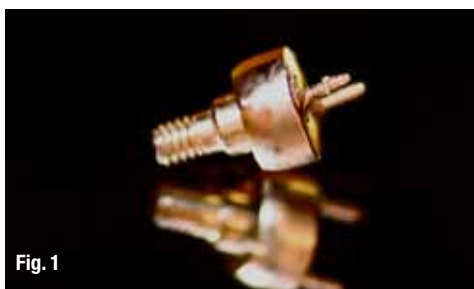
The temporization of a dental implant following surgery, particularly in the anterior region, is

Background

Following the surgical placement of a dental implant, several requirements must be met to maxi-

Fig. 1 Tempcap abutment.

Fig. 2 Retentive pins.



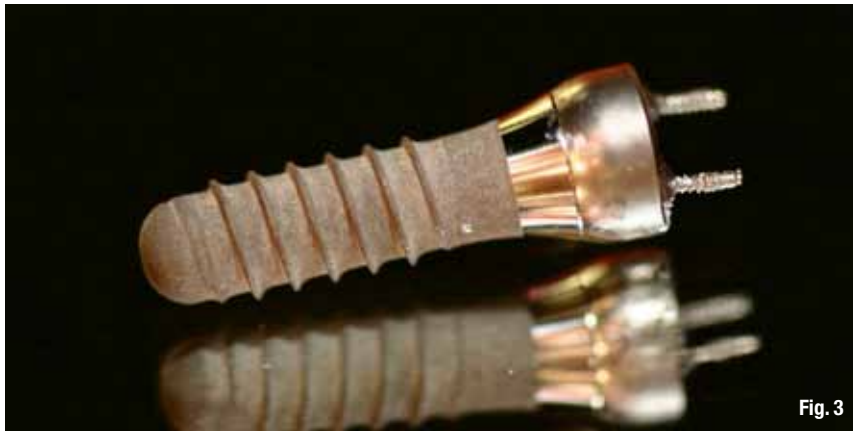


Fig. 3



Fig. 4

mize healing and osseointegration of the implant body to bone:

- Minimal forces, if any, should be exerted on the implant body, permitting proper healing and preventing a non-osseous union.²
- The gingival architecture must be managed meticulously to prevent contamination, minimizing the risk of peri-implantitis and possible failure.³
- There must be sufficient time for the process of osseointegration.⁴
- Temporization and immediate restorations should not violate these factors.⁵

The Tempcap (Research Driven, Ontario, Canada) is a healing cap and restorative platform combined (Fig. 1). It has an all-metal construction, and it contains two to three retentive pin projections (Fig. 2). Tempcap is available in different widths and heights to accommodate different implant sizes (Fig. 3) and is compatible with existing instrumentation (Figs. 4).

The function of the Tempcap is:

- to allow for optimal gingival healing
- prevent contamination of the surgical field
- minimize forces and micro-vibrations on the implant
- facilitate the simple yet successful restoration of the implant (Fig. 5).

CAD/CAM stands for computer-aided design and

computer-aided manufacturing. CAD enables the individual to digitally capture an image of a prepared tooth or structure and then design an indirect (out of the mouth) restoration by using software.⁶

After the ideal restoration has been produced, the design is then fabricated out of a material by a milling machine. In-office E4D units (D4D Technologies) are currently available to allow for immediate chairside fabrication without the use of a commercial laboratory.

IPS e.max (Ivoclar Vivadent) is a relatively new metal-free dental material used in indirect restorations. It is an esthetic material composed of lithium disilicate and has ideal physical and esthetic properties, allowing it to be the first choice for CAD/CAM restorations. IPS e.max has strength second only to gold and has the ability of detailed CAM production.⁷

Methodology

The Tempcap was selected and placed on an Ankylos (DENTSPLY) implant body (master cast with soft tissue) (Fig. 6). Digitization was achieved by using an E4D camera (Fig. 7), in which several images were captured to compile an accurate image (Figs. 8 and 9). CAD design was used with E4D software to determine and delineate margins (Fig. 10).

Fig. 3_ Tempcap with Straumann implant.

Fig. 4_ Use of existing instruments.

Fig. 5_ Temporization form and function.

Fig. 6_ Tempcap on soft-tissue model with Ankylos implant.



Fig. 5



Fig. 6



Fig. 7

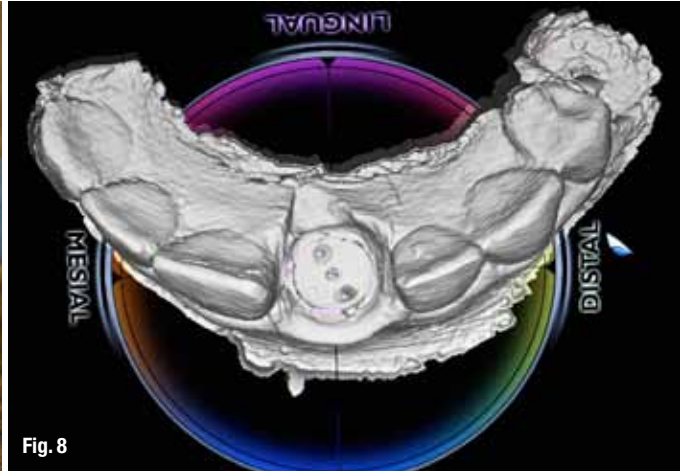


Fig. 8

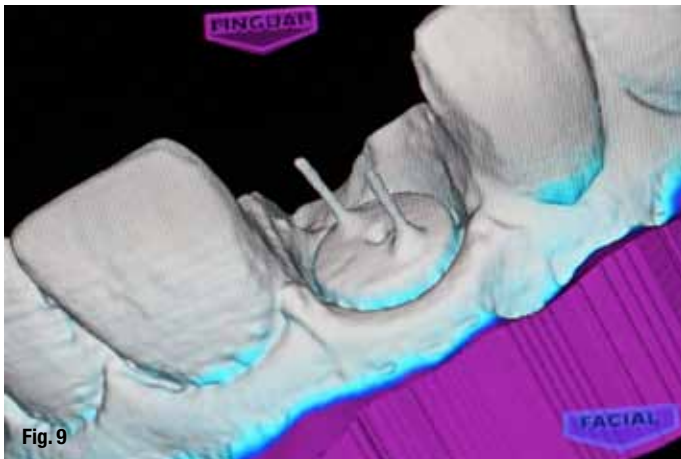


Fig. 9

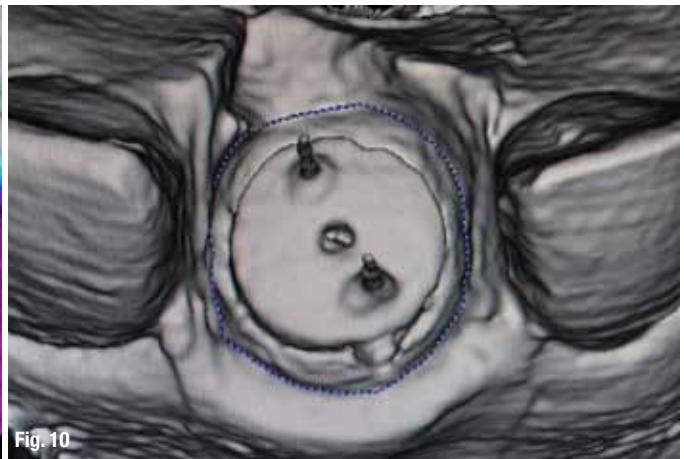


Fig. 10



Fig. 11

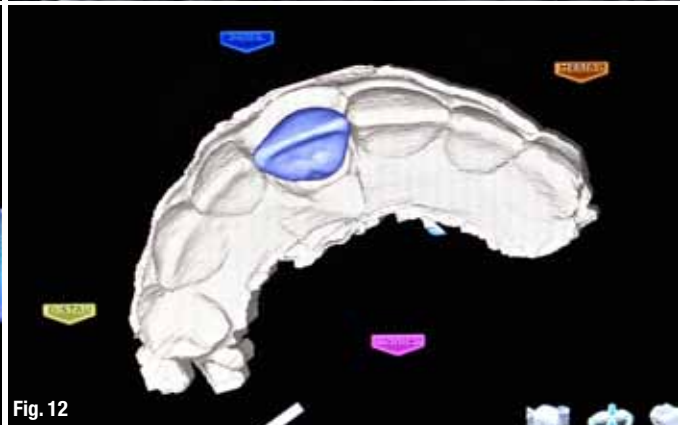


Fig. 12

Fig. 7_Digitization with E4D camera.

Fig. 8_ Digitized images of arch.

Fig. 9_ Tempcap digitized.

Fig. 10_Digitized delineation of Tempcap.

Fig. 11_Development of emergence profile.

Fig. 12_Occlusal view of restoration.

Tooth design was initiated incorporating several parameters:

- ideal esthetics and emergence profile (Fig. 11)
- adequate proximal contacts
- appropriate occlusal scheme
- material thickness requirements
- internal surface morphology to adapt to Tempcap

Numerous design iterations were required to achieve the desired design requirements (Figs. 12-

14). IPS e.max was selected for milling (Fig. 15) and was executed by an E4D CAM unit (Fig. 16). Milling limitations, such as bur contact and prosthesis fracture, required CAD design modifications. Reiterations in CAD/CAM design were carried out until a successful restoration was achieved (Fig. 17).

The unfired IPS e.max crown was tried for fit and esthetics and then subsequently fired (Fig. 18), resulting in its color change. The crown was further stained, glazed and fired (Fig. 19), resulting in a highly esthetic final restoration (Fig. 20). The restoration's internal aspect (Fig. 21) was assessed



Fig. 13

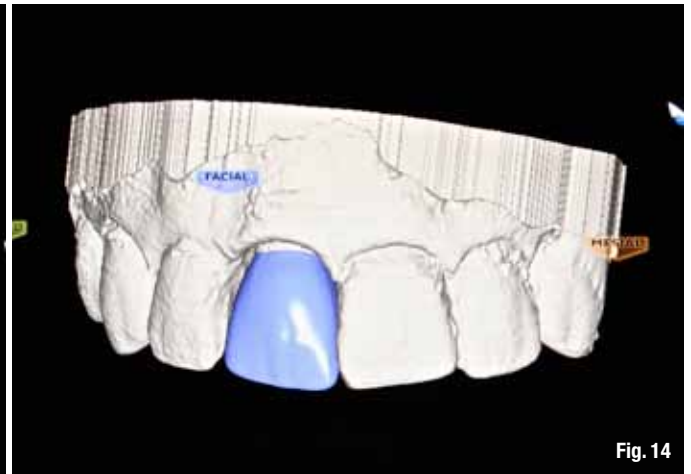


Fig. 14



Fig. 15



Fig. 16



Fig. 17



Fig. 18

for path of insertion, retention and fit.

The IPS e.max prosthetic crown was further assessed for fit, taking into account marginal fit, occlusion and proximal contacts (Fig. 22).

A secondary investigation utilized a more complex Tempcap to assess the limit of the CAD/CAM unit's capability. A stand-alone Ankylos (DENTSPLY) implant body was coupled with a Tempcap abutment with three retentive pin projections (Fig. 23). The abutment was digitized with the same methodology as described. An IPS e.max crown was executed and assessed (Figs. 24 and 25).

Discussion

This study has determined that the Tempcap can be successfully and accurately digitized and milled by in-office CAD/CAM technology (D4D Technologies) to create an ideal prosthetic crown from IPS e.max within a laboratory setting. CAD software can be manipulated to generate forms beyond the scope of the unit.

Complex units, such as the three-pronged Tempcap may be successfully designed and milled. IPS e.max has the capability to be milled in com-

Fig. 13_ Lingual view of restoration.

Fig. 14_ Facial view of restoration.

Fig. 15_ IPS e.max CAD/CAD block.

Fig. 16_ D4D E4D CAM unit.

Fig. 17_ Milled IPS e.max restoration.

Fig. 18_ Ivoclar furnace.