

implants

the international C.E. magazine of oral implantology

2²⁰¹²

_c.e. article

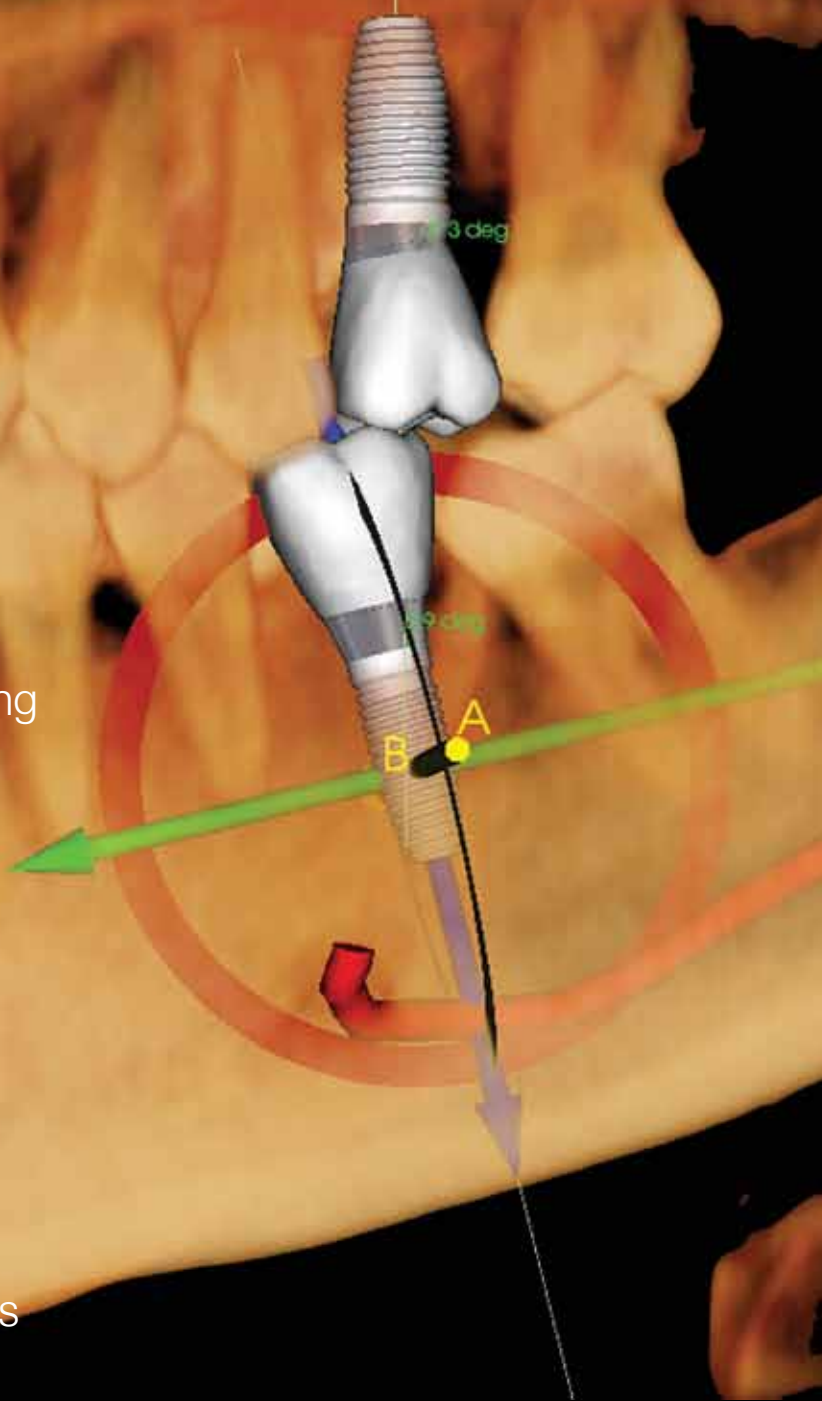
Precise, safe and conservative bone harvesting and osteotomy technology

_clinical article

Immediate restoration of single implants replacing central incisors

_industry

Dr. Justin Moody's personal experience with i-CAT and E4D systems



practice

technology

efficiency

power

workflow

patient

implant inspir3D

advanc3D

assur3D

control3D

engag3D

determin3D

evolv3D

power3D

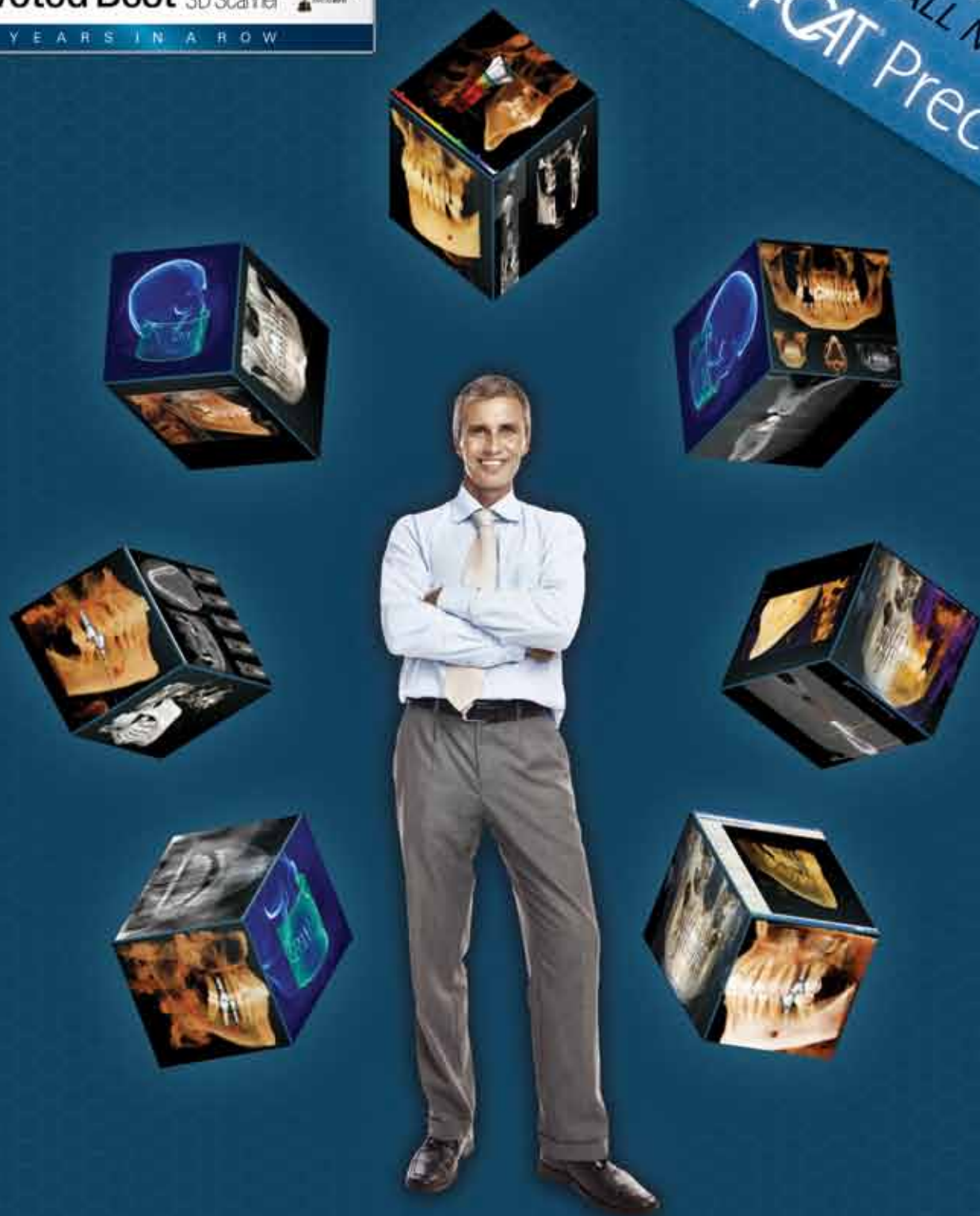
convinc3D

i-CAT[®] Precise[™]

i-CAT Voted Best Cone Beam 3D Scanner
5 YEARS IN A ROW



Introducing
ALL NEW
i-CAT Precise™



implant inspir3D

POWERFUL. FAST. FLEXIBLE.

Introducing the all new i-CAT Precise. The power of i-CAT in a package designed specifically for Implants and Oral Surgery. **Powerful Tools, Fastest Workflow, More Clinical & Dose Control.**

www.i-CAT.com | 800 205 3570



facebook.com/iCAT3D
twitter.com/iCAT3D

i-CAT®

Available exclusively through
HENRY SCHEIN®
DENTAL

The world of *implants* is ever changing, evolving



Publisher Torsten Oemus

_Thanks to rapidly advancing technology, the field of implant dentistry is always changing and evolving. Clinicians must be vigilant in their efforts to keep up with new techniques, new products and new technology that could affect their treatment planning.

And that's what makes the publication you are holding right now so valuable.

For this issue of *implants*, we've assembled a collection of articles from a variety of respected names in dentistry. These expert clinicians are sharing their first-hand knowledge and expertise with you. Within this issue, you can read about bone harvesting and osteotomy technology; you can learn about multidisciplinary implant treatment; and you can also read about the immediate restoration of single implants replacing central incisors compromised by internal resorption.

We also have important information on upcoming implant-focused events and about new implant products and technology.

But there's more.

Every issue of *implants* magazine also contains a C.E. component. By reading the article (beginning on Page 8) on "Precise, safe and conservative bone harvesting and osteotomy technology" by Dr. Pankaj Singh, and then taking a short online quiz about this article at www.DTStudyClub.com, you will gain one ADA CERP-certified C.E. credit. Keep in mind that because *implants* is a quarterly magazine, you can actually chisel at least four C.E. credits per year out of your already busy life without the lost revenue and time away from your practice.

To learn more about how you can take advantage of this C.E. opportunity, visit www.DTStudyClub.com. Annual subscribers to the magazine (\$50) need only register at the Dental Tribune Study Club website to access these C.E. materials free of charge. Non-subscribers may take the C.E. quiz after registering on the DT Study Club website and paying a nominal fee.

I know that taking time away from your practice to pursue C.E. credits is costly in terms of lost revenue and time, and that is another reason *implants* is such a valuable publication.

I hope you enjoy this issue and that you get the most out of it.

Sincerely,



Torsten Oemus
Publisher

Singh Guided Pin Surgery (GPS) Kit **by MEISINGER**

The Singh Guided Pin Surgery system (Meisinger USA) was developed out of the need for a simplified and conservative surgical system for implant dentistry and to minimize the need for non-autogenous-sourced hard-tissue grafting material. The eventual benefit would be a faster and safer method to create an ideal osteotomy while simultaneously collecting and harvesting substantial volumes of autogenous bone for grafting purposes.



Singh GPS Trephine Kit # SGPS

\$795.00



Meisinger USA, L.L.C.

7442 South Tucson Way, Suite 130 • Centennial, Colorado 80112 • USA

Tel.: +1 (303) 268-5400 • Fax: +1 (303) 268-5407

www.meisingerusa.com • www.bone-management.com • info@meisingerusa.com



C.E. article

- 08 Precise, safe and conservative **bone harvesting** and osteotomy technology
_Pankaj Singh, DDS, DICOI, DABOI, FAAID, and Christine W. Chu, DDS

clinical

- 16 **Immediate restoration of single implants** replacing central incisors compromised by internal resorption
_Susan McMahon, DMD, and Jessica Forestier
- 22 The **surgically accelerated orthodontics** in multidisciplinary implant treatment
_Federico Brugnami and Alfonso Caiazzo, Italy

research

- 30 **American Academy of Implant Dentistry Foundation** awards more than \$165,000 for research projects

events

- 31 ICOI celebrates **40th anniversary** at World Congress XXIX
_Craig Johnson, Executive Director, ICOI
- 32 Gear up for second **charitable bike event**

industry

- 33 Quick Up method eliminates risk of **accidental locking of dentures to implant**, cuts procedure time in half

- 36 **Implant planning**, from start to finish
_Justin Moody, DDS
- 40 **Expanded indications, new packaging** for BIOMET 3i's Endobon Xenograft Granules
- 42 Zimmer Dental now distributing IngeniOs **synthetic bone-grafting products**
- 43 Introducing **BLOSSOM**
- 44 Change your patients' lives with **denture comfort**
- 48 A **new generation** of small diameter soft-tissue level implant
_Straumann staff

about the publisher

- 49 _submissions
- 50 _imprint



on the cover

Cover image provided by Imaging Sciences



ATLANTIS™

– the freedom of unlimited possibilities

Abutments as individual as your patients

Available for all major implant systems and in your choice of titanium, gold-shaded titanium and four shades of zirconia, Atlantis™ patient-specific CAD/CAM abutments help to eliminate the need for inventory management of stock components and simplify the restorative procedure.

Atlantis™ Abutments are comprised of a unique combination of four key features, known as the Atlantis BioDesign Matrix™. Together, these features work to support soft tissue management for ideal functional and esthetic results.

Just take an implant-level impression, send it to your laboratory and ask for Atlantis today.

Atlantis BioDesign Matrix™



Atlantis VAD™

Designed from the final tooth shape.

Natural Shape™

Shape and emergence profile based on individual patient anatomy.

Soft-tissue Adapt™

Optimal support for soft tissue sculpturing and adaptation to the finished crown.

Custom Connect™

Strong and stable fit – customized connection for all major implant systems.

794874351106 © 2011 Astratech Dental

**ASTRATECH
DENTAL**
Get inspired

Precise, safe and conservative bone harvesting and osteotomy technology

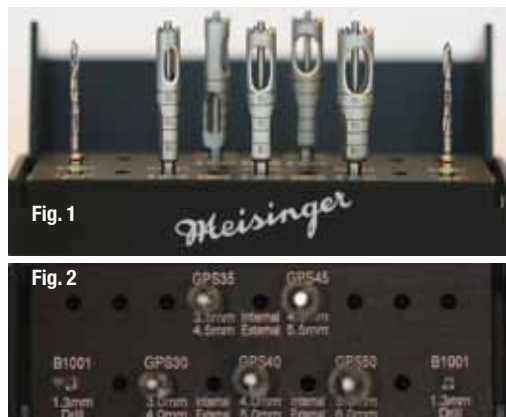
Authors Pankaj Singh, DDS, DICOI, DABOI, FAAID, and Christine W. Chu, DDS

_c.e. credit

This article qualifies for C.E. credit. To take the C.E. quiz, log on to www.dtstudyclub.com. The quiz will be available on April 25.

Study: harvesting autogenous bone from the osteotomy site for minimally invasive implant placement using guided precision surgical trephines, and case report: osseous conservative crestal approach sinus lift

Figs. 1,2_GPS (Guided Precision Surgery, Meisinger) Trephines, side view.
(Photos/Provided by Pankaj Singh, DDS, DICOI, DABOI, FAAID, and Christine W. Chu, DDS)



designed and engineered Guided Precision Surgical (GPS) Trephines drills for the purpose of placing a dental implant, while simultaneously collecting substantial volume of autogenous bone that otherwise would have been discarded during the current osteotomy creation method using sequentially enlarging diameter spade drills.³ Included is a case report on how these drills can be used to prepare an osteotomy for a crestal approach sinus lift while simultaneously using the harvested bone for augmentation.

_Materials and methods

The current method of creating a receptor site for a dental implant results in severe trauma (destruction and loss) to the host bone in the process. Depending on operator experience and bone type, it is very possible to oversize the osteotomy resulting in a non-optimum fit of the implant, which can cause failure due to non-integration.

_Abstract

The specific aim of this project is to evaluate and substantiate the effectiveness and simplification of the osteotomy creation process using the newly



Fig. 3



Fig. 4



Fig. 5

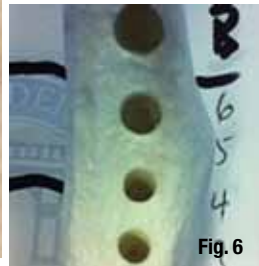


Fig. 6

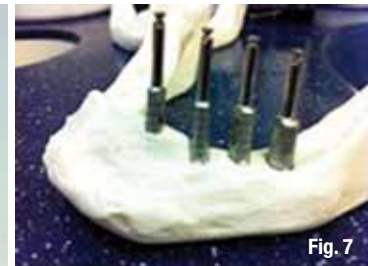


Fig. 7



Fig. 8

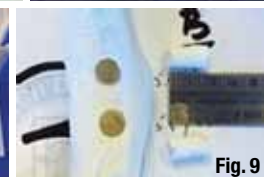


Fig. 9

Fig. 3 Five trephine drills with outer diameters of 4.0 mm to 6.0 mm in 0.5 mm increments.

Fig. 4 Side view showing simulated bone captured during the drilling of the osteotomy.

Fig. 5 Aerial view showing captured bone surrounding the central guide pin.

Fig. 6 Crestal view of the osteotomy's created by the GPS drills.

Fig. 7 Side view of the GPS drills in the osteotomy sites.

Fig. 8 Crestal view of the side-by-side osteotomies created by the proprietary protocol on side A and GPS on side B

Fig. 9 Simulated bone cores removed from the GPS created osteotomies and measured for length.

Occasionally, there is need for hard-tissue augmentation of the implant; however, harvesting autogenous bone from a secondary site is not without significant morbidity and risk.

This study was designed to compare osteotomy creation and simultaneous bone harvesting using the newly introduced GPS (Guided Precision Surgery, Meisinger) Trephines (Figs. 1, 2) vs. traditional osteotomy using spade drills.

Use of the GPS Trephines: 1) simplifies and streamlines the surgical placement of implants, 2) minimizes trauma to the surgical site by using fewer instruments while simultaneously collecting vital autogenous, and 3) enables the harvesting of autogenous bone from the osteotomy site eliminating/decreasing the need for a secondary donor site or the use of alternative bone-grafting materials. Additionally, autogenous bone, considered to be the "Gold Standard"¹ in bone grafting, is invaluable in Guided Bone Regeneration² and further decreases the costs of bone-grafting materials.

The GPS Trephine system was developed out of the need for a simplified and conservative surgical system for implant dentistry and to minimize the need for non-autogenous sourced hard-tissue grafting material.⁴ The eventual benefit is a faster and safer method to create an ideal osteotomy while simultaneously collecting and harvesting substantial volumes of autogenous bone for grafting purpose.

The system allows the implant surgeon to accomplish the preparation of an osteotomy for the placement of an implant⁵ in only two steps, utilizing only two surgical drills, irrespective of the implant system and size of the implant being used.

The system consists of a 1.3 mm pilot drill (two pilot drills are included as part of the system package, which function as guide and paralleling pins), five trephine drills with outer diameters of 4.0 mm to 6.0 mm in 0.5 mm increments (Fig. 3) and an auto-

clavable organizational bur block. The trephine allows for the capture of the bone block,⁶ 1 mm less in diameter (representing the internal diameter of the trephine) than the osteotomy (outer diameter of the trephine) (Figs. 4,5).

The trephines have a parallel walled 1.3 mm central guide pin that protrudes 1 mm past the cutting ends and is flat (non cutting). The unique aspect of this system is that the entire trephine with the central guide pin is fabricated in one piece using CAD/CAM manufacturing out of a single block of high strength metal. The parallel walls of the guide pin allow the trephine to advance along the shaft left from the pilot drill, preventing misdirection, and the extended flat-ended pin allows the trephine to advance to the depth defined by the pilot drill. Once "bottomed out," the trephine freely rotates around its central axis without risking extension of the osteotomy's depth or width.

This was a primary study using dense plastic simulated bone model mandibles, from which the data obtained would be used to submit for an IRB-approved human trial. Ten simulated bone mandibles were used to conduct a quantitative analysis of the amount of simulated bone salvaged during the osteotomy creation process, five different proprietary implant system drilling protocols were used and compared to newly introduced GPS Trephine system and drilling protocol for the same diameter implants.

Each mandible was designated a control (right) side and an experimental (left) side, and each implant system was allowed two mandibles with a minimum of four osteotomy sites per implant diameter. The drilling was carried out in sequence as per the pro-