

DENTAL TRIBUNE

The World's Dental Newspaper · Middle East & Africa Edition

PUBLISHED IN DUBAI

www.dental-tribune.me

VOL. 12, No. 6

ENDO TRIBUNE

FKG Dentaire introduces XP-endo Rise, making procedures faster, safer and more efficient

LAB TRIBUNE

Interview: "Our bodies aren't naturally perfect geometries": 3D printing advances customisation in treatment

IMPLANT TRIBUNE

Interview: "We create value for dentists as well as patients in aspect of implant market needs and demands"

ORTHO TRIBUNE

Interview: Highlights from Align Technology's first in-person Scientific Symposium following the pandemic

HYGIENE TRIBUNE

Shining the brightest light on sensitive teeth

► Insertion A

► Insertion B

► Insertion C

► Insertion D

► Insertion E

Dr Galip Gürel and Dr Mauro Fradeani confirm participation in CAPP ConfEx'23

By CAPP

CAPP has announced that two of the leading international experts in restorative and aesthetic dentistry will be lecturing on the "36th Int'l Dental ConfEx CAD/CAM Digital & Oral Facial Aesthetics". The event is expected to attract over 5,000 dental professionals and will be held at Madinat Jumeirah Arena & Conference Centre in Dubai in the UAE on 27 and 28 October 2023.

Dr Galip Gürel will talk about "Predictable and Long-term Success in Aesthetic Dentistry". In his lecture Dr Gürel will explain the importance of creating the best smile design before deciding on the treatment plan, recent updates in adhesive strategies, prosthodontic material selection and classifications, how to treat different materials,

► Page 02



Dr Galip Gürel and Dr Mauro Fradeani confirm participation as Keynote Speakers for CAPP ConfEx in 2023 in Dubai, UAE.

AD

#whdentalwerk
f @ in v
video.wh.com

Now at
your dealer
or wh.com



The breakthrough in oral surgery

Piezo surgery for Implantmed - now as a simple add-on.

The new Piezomed module.

W&H presents the game changer in piezo surgery. As a simple add-on solution, the Piezomed module can now be used in conjunction with Implantmed Plus. W&H is breaking new ground in surgical applications. This ingenious modular system combines expertise from different areas.



piezomed
module

•Page 01

how to combine this knowledge and integrate it into an esthetic workflow in their daily clinical practices.

Dr Mauro Fradeani lecture title is "A 40-year experience on esthetic rehabilitation: the evolution of clinical approach and techniques". He will discuss complex rehabilitations, an indispensable means of achieving optimal final results, from the esthetic as well as biological and functional viewpoints. Dr Fradeani will show and explain the world famous Minimally Invasive Prosthetic Procedure (MIPP) which permits to re-establish an ideal occlusal relationship and to avoid additional endodontic or surgical steps that were traditionally necessary in order to improve the retention of

the restorations. The maintenance of a maximum amount of enamel and the use of the appropriate bonding technique which guarantees a remarkable resistance and a long-lasting result of the prosthetic rehabilitation will also be explained in details.

The two-day dental scientific conference and exhibition will bring together dental professionals, the dental industry and top international speakers who will share their knowledge and expertise in one of the region's largest dentistry-focused educational conferences and exhibitions. The event will cater for general and specialist dental practitioners, as well as the entire dental team. The gathering will include a scientific conference, exhibition, multidisciplinary

hands-on training courses, poster presentations and exhibition training zones. The scientific programme will include the sub-events:

- CAD/CAM & Digital Dentistry Conference & Exhibition
- Dental Facial Cosmetic Int'l Conference & Exhibition
- Digital Orthodontics Symposium (DOS)
- Dental Hygienist Seminar (DHS)
- Dental Technician Int'l Meeting (DTIM)

The conference and exhibition are aimed at giving dental professionals unrivalled opportunity to engage with their peers and meet with and discuss possibilities with industry representatives. There

will be also a rich social programme, which the organisers will announce soon. Event attendees will be able to earn 14 continuing education credits. CAPP is an American Dental Association Continuing Education Recognition Program recognised provider.

CAPP is inviting all dental professionals and dental industry representatives to attend and is offering an early bird special registration rate until 27 February 2023.

Registration is now open at cappmea.com/confex

AD

CAD/CAM Digital Oral Facial Aesthetics 36th Dental ConfEx

MADINAT JUMEIRAH ARENA
& CONFERENCE CENTRE
DUBAI | UAE

CAPP

Dubai
27-28 Oct
2023

KEYNOTE SPEAKER
DR GALİP GÜREL

KEYNOTE SPEAKER
DR MAURO FRADEANI

www.cappmea.com/confex

Tel./WhatsApp: +971 50 279 3711 | Email: events@cappmea.com

IMPRINT

PUBLISHER AND CHIEF EXECUTIVE OFFICER:
Torsten OEMUS

CHIEF CONTENT OFFICER:
Claudia DUSCHEK

MEA EDITORIAL BOARD:
Dr. Aisha Sultan ALSUWAIDI, UAE
Prof. Paul TIPTON, UK
Prof. Khaled BALTO, KSA
Dr. Ninette BANDAY, UAE
Dr. Nabeel Humood ALSABEEHA, UAE
Dr. Naif ALMOSA, KSA
Dr. Mohammad AL-OBAIDA, KSA
Dr. Meshari F. ALOTAIBI, KSA
Dr. Jasim M. AL-SAEEDI, Oman
Dr. Mohammed AL-DARWISH, Qatar
Dr. Dobrina MOLLOVA, UAE
Dr. Ahmed KAZI, UAE
Dr. Munir SILWADI, UAE
Dr. Khaled ABOUSEADA, KSA
Dr. Rabih ABI NADER, UAE
Dr. Ehab RASHED, UAE
Dr. Mohd Dashti, Kuwait
Aiham FARRAH, CDT, UAE
Retty M. MATTHEW, UAE

PARTNERS:
Saudi Dental Society
Saudi Ortho Society
Lebanese Dental Association
Lebanese Orthodontic Society
Qatar Dental Society
Oman Dental Society
Kuwait Dental Association
International Federation of Dental Hygienist
British Academy of Restorative Dentistry
British Academy of Dental Implantology
AALZ - Aachen Dental Laser Center
Singapore Dental Association
Saudi Dental Hygienist Society

MEA PUBLISHER:
Dr. Dobrina MOLLOVA

SALES:
Tzvetan DEYANOV
Petar MOLLOV

EDITING & DESIGN:
Kinga MOLLOV

DENTAL TRIBUNE MEA:
Onyx Tower 2, Office P204, Dubai, UAE
Mob.: +971 55 112 8581
www.dental-tribune.com
General requests:
dtmea@dental-tribune.me

PRINTING HOUSE & DISTRIBUTION:
Al Nisr Printing
P. O. Box 6519, Dubai, UAE
800 4585/04-4067170

Material from Dental Tribune International GmbH that has been reprinted or translated and reprinted in this issue is copyrighted by Dental Tribune International GmbH. Such material must be published with the permission of Dental Tribune International GmbH. Dental Tribune is a trademark of Dental Tribune International GmbH.

All rights reserved. © 2022 Dental Tribune International GmbH. Reproduction in any manner in any language, in whole or in part, without the prior written permission of Dental Tribune International GmbH is expressly prohibited.

Dental Tribune International GmbH makes every effort to report clinical information and manufacturers' product news accurately but cannot assume responsibility for the validity of product claims or for typographical errors. The publisher also does not assume responsibility for product names, claims or statements made by advertisers. Opinions expressed by authors are their own and may not reflect those of Dental Tribune International GmbH.



Made by You

Open a world of confident smiles with Primescan's uniquely accurate approach to dentistry. Primescan as unique as your patients, the first intraoral scanner to be validated for Atlantis suprastructures.



Part 5: Sustainable dentistry in 500 words or more



In this six-part series, Dr Sanjay Haryana writes in brief about different aspects of sustainability in dentistry. (Image: gerald/Pixabay)

By Dr Sanjay Haryana

SINGAPORE: As described in the previous article, sustainable dentistry's two major outcomes, namely good oral health and reduced environmental impact, could be achieved by focusing on preventive and quality operative care. However, the large amount of waste produced by the dental office daily is a problem that needs immediate attention. Medical and dental care generate substantial waste; 5% of all the emissions in the EU are estimated to come from the healthcare sector.¹ As Gavin J Wilson stated in his opinion paper, "if the healthcare sector were a country, it would be the fifth largest greenhouse gas emitter in the world".²

Dental waste management has been primarily focused on amalgam disposal, but this is no longer the primary issue.¹ Even though it is well known that dental practices generate great amounts of waste, there is limited data available on the effect of this on the environment. Similar to sustainable dentistry, dental waste management lacks a global consensus on how to

tackle certain environmental issues that are associated with dentistry.^{1,3}

To address dental waste management, it is vital to first understand the classifications of dental waste and how it is handled. It is important to note here that dental waste management can differ from region to region and depends on local policy.

In the day-to-day running of a dental practice, waste is generated from all parts of the business and can be divided into three categories: household waste, hazardous waste and clinical waste. Household waste is similar to what is generated in a residential environment. Hazardous waste, however, is considered harmful to people and/or damaging to the environment. It includes clinical waste, radiographic solutions, amalgam and gypsum, which generates a toxic gas during degradation in landfills. Clinical waste is defined as "any waste which consists wholly or partly of human or animal tissue, blood or other body fluids, excretions, drugs or other pharmaceutical products, swabs or dressings, syringes, needles or

other sharp instruments" and is also classified as hazardous.⁴

Household waste should, if possible, be recycled. Hazardous waste must be disposed of through the appropriate facility. Clinical waste should be incinerated.

The four Rs in dentistry

For dental professionals, waste management aims to protect humans and the environment. If correctly done, it can also reduce costs, since most of the waste produced is clinical waste and this is more expensive to dispose of compared with household waste. A popular way to manage waste has been to employ the four Rs—reduce, reuse, recycle and rethink.

- **Reduce in the surgery**
Many practices work with preset trays containing certain instruments and disposable material, such as plastic tray liners, gauze, cotton rolls and polishing paste. As soon as the tray has been contaminated, all materials, both used and unused, are classified as clinical waste. Practices should review their set-up routines to minimise the waste of unused material. Reducing also goes hand in hand with

sustainable procurement, the topic of Part 3 in the series.

- **Reuse in the surgery**
Most of the waste in dentistry consists of single-use equipment. Single-use equipment is not used for the sake of convenience but to minimise cross-contamination.^{2,3} There is thus a need for the development of novel solutions allowing sterilisation and reuse. In the case of swapping from single-use to multiple-use items, it is important to make sure that patient safety comes first and to remember that it is not all black or white; for example, not all multiple-use equipment leads to less environmental impact in terms of the manufacturing process, water usage and energy usage. Practices must do their homework before switching and ask the following questions: is the equipment safe for patients and personnel, and do its production and use have a positive impact on the environment?

- **Recycle in the surgery**
This is the most challenging R, since clinical waste cannot be recycled. The most common materials found in clinical waste are tissues, gloves and sterilisation pouches.¹ It

makes sense to discard tissues and gloves in a clinical waste bag, but what about sterilisation pouches? We should be able to establish routines that allow us to open them with clean gloves, separate the plastic from the paper and recycle appropriately. Small actions like this can have a positive impact on the environment and save costs for dental practices.

- **Rethink in the surgery**
Rethinking is the most important of the four Rs. Even though reducing, reusing and recycling are the most discussed, they do not adequately address the clinical reality of dentistry or medicine.³ To meet the United Nations' Sustainable Development Goals set out in Agenda 2030, our suppliers must understand the waste management system in order to align their dental products and materials with the most appropriate end-of-life procedure—incineration, landfill or recycling (chemical or mechanical).

Moving forward

All clinical waste is destined for incineration and should, therefore, be bio-based instead of fossil-based to reduce the net emissions. Additionally, a consensus is needed on how to safely minimise single-use equipment, including sterilisation pouches.

The healthcare sector must move from a linear to a circular approach. This could involve recycling; however, recycling has its challenges. To be able to produce raw material, the recycling process requires non-contaminated homogenous material. Otherwise, the material will have different properties and lose quality in each cycle, resulting in downcycling instead of recycling.

There are many different types of plastics used in the healthcare system, and a circular approach will never be accomplished if they are recycled together. Our efforts in the clinical setting will have little impact on sustainability unless there is an alignment of equipment production, waste management and end-of-life procedures. Only then can good oral health and reduced environmental impact be achieved.

Editorial note: In this six-part series, Dr Sanjay Haryana will give an overview of different aspects of sustainability in dentistry. A list of references is available from the publisher.

About the author:

Dr Sanjay Haryana is an Education and Odontology Specialist at TePe Oral Hygiene Products.



Your Endo Guide

Practical. Innovative. Leading the way.



Together we'll find a way.

For better, easier, and more reliable dentistry.
For more information scan the QR code.

Success CD

By Promedica

The material for perfect temporary crowns and bridges

Success CD is PROMEDICA's composite-based, self-curing paste-paste system for quick and easy chairside production of temporary crowns, bridges, inlays and onlays.

High-quality temporary restorations within 5 minutes

After a retention time of 30 to 60 seconds in the oral cavity, the material takes on an elastic consistency, which facilitates removal without risking deformation. The material cures completely within a further 3 minutes and can then be polished. This procedure is time-saving and thus highly economical.

Excellent physical properties and great aesthetic results

As far as the material's physical properties are concerned, Success CD convinces with its excellent flexural and overall strength as

well as its capacity to withstand high functional loads.

The product's minimal polymerisation shrinkage results in precisely fitting temporary restorations. Success CD's high colour stability and brilliant, enamel-like gloss ensure long-term aesthetic results. Moreover, its natural fluorescence and the choice of available shades promote perfect aesthetic results.

For more information, contact:

Promedica Dental Material GmbH
Domagkstrasse 31
24537 Neumuenster
Germany
Tel: +49 43 21 / 5 41 73
E-mail: info@promedica.de



(Image: Promedica)

Ultradent Products introduces new VALO X Curing Light



(Image: Ultradent Products)

By Ultradent Products

Ultradent Products, Inc., a leading developer and manufacturer of high-tech dental materials and equipment, launched the newest edition of its multi-award-winning VALO curing light—the completely redesigned VALO X broadband LED curing light. As Ultradent Products' most innovative curing light yet, the VALO X curing light offers the ultimate in engineering and design when it comes to every aspect of the light—including durability, power, accessibility, and versatility.

Thanks to its larger 12.5 mm lens and new powerful custom LED chip, the VALO X curing light offers a more complete cure than ever before. Its superior features allow clinicians to cure with confidence, and not have to question the capabilities of their light. This includes improved curing depth, beam collimation, and thermal management. The VALO X curing light comes equipped with two power modes (Standard Power and Xtra Power), two diagnostic light modes (black light and white light), as well as the ability to work corded or cordless.

The light's one-button activation also sports a user interface with an accelerometer, so users can cycle between the light's power and diagnostic modes with just the wave of the wand, a light drum tap, or the push of a button. This helps reduce mid-procedure fumbling and the likelihood of dropping the light.

The VALO X light also comes with five accessory lenses, which further enhance its capabilities. A simplified, low-profile design enables the light's head to reach posterior restorations with ease. "We

simplified the VALO X curing light even more by making it the only light that allows you to change modes without pushing buttons, thanks to its new accelerometer," says Ultradent Products VP of Research and Development Neil Jesop. "In fact, it's engineered so well that it won't change modes by accident, providing the experience and performance you expect from a VALO curing light."

Like Ultradent Products' other award-winning VALO curing lights, the VALO X curing light is milled from a single bar of aerospace-grade

aluminum—a material that improves thermal management, LED longevity, and provides unmatched durability.

Ultradent

For more information about Halo Sectional Matrix System please contact sophia.yadi@ultradent.com

NEW!



VALOTM X

THE CURING LIGHT REIMAGINED



SEE MORE AT [ULTRADENT.COM/INFO/VALO-X](https://ultradent.com/info/valo-x)

800.552.5512 | [ULTRADENT.COM](https://ultradent.com)

SENSODYNE

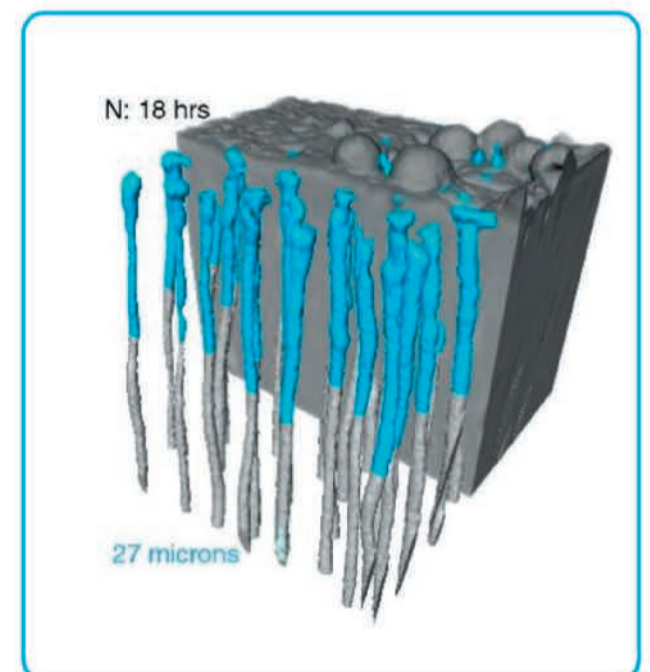
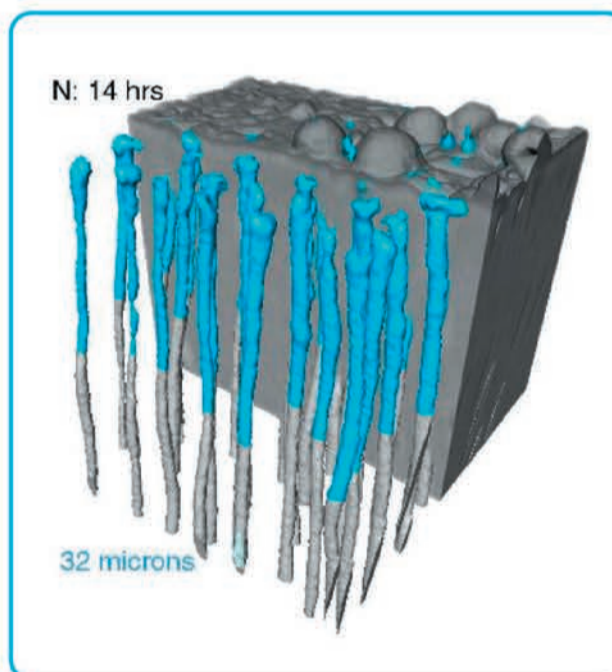
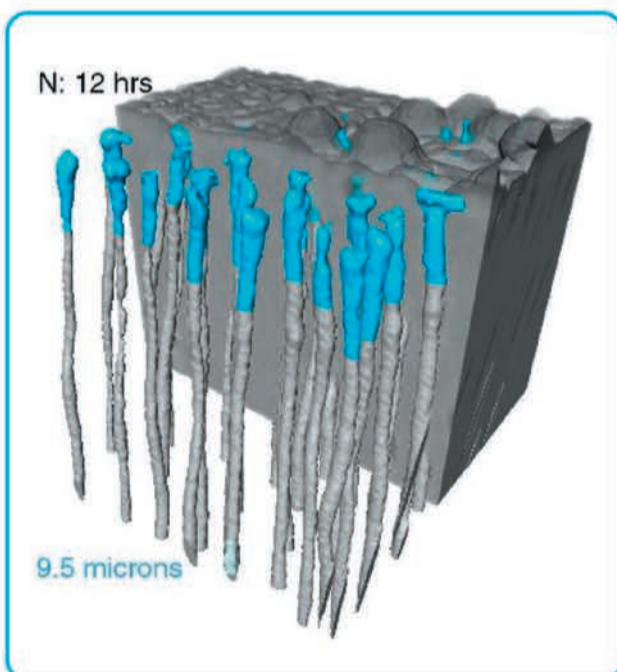
ADVANCED REPAIR & PROTECT DEEP REPAIR*

Offers long-term protection that helps your patients enjoy life without worrying about pain of sensitive teeth.¹⁻³

Optimised Formula

- Scientifically proven to go deep⁴
- Offers targeted occlusion^{5,6}
- Optimised for improved patient product usage experience (such as improved viscosity and texture)¹⁷

The synchrotron studies showed Sensodyne Advanced Repair and Protect Deep Repair resulted in the deep occlusion of tubules.⁴



Visualisation of average occlusion depth (μm) in vitro in dentine specimens treated with NovaMin (N) based toothpaste formulation of Sensodyne Advanced Repair and Protect Deep Repair (containing 5% NovaMin).⁴

At **GSK Consumer Healthcare**, we are determined to advance the science of sensitivity and continue to drive improvements in our **Sensodyne** formulations. That determination has led us to the European Synchrotron Radiation Facility (ESRF) in Grenoble – one of the biggest synchrotrons in the world – to push the boundaries of what's possible in understanding toothpaste technology

*vs previous Sensodyne Advanced Repair & Protect

What is a synchrotron?



- Stadium-sized machine which is an extremely powerful source of X-rays, 10 trillion times brighter than medical x-rays.⁸
- High-energy electrons travel around the giant ring, to produce the X-rays, emitted as beams⁹
- Allows visualisation of the structure of matter down to the atomic level⁸

European Synchrotron Radiation Facility in Grenoble

New formulation offers targeted occlusion

Tubule occlusion from top down (surface) imaging

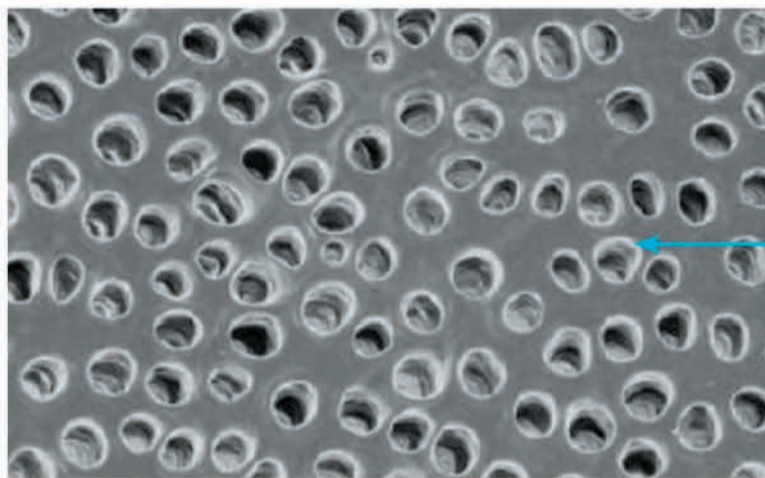


Figure 1. Dentin samples prior to treatment highlight exposed tubules⁶

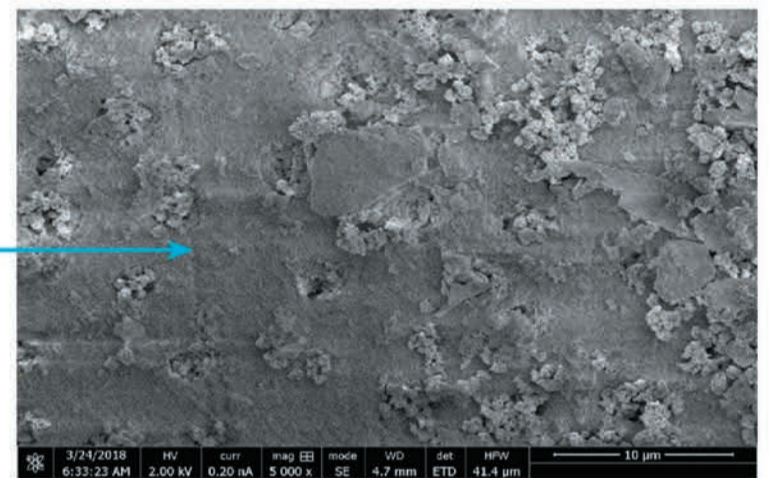


Figure 2. Dentine treated with Advanced Repair and Protect Deep Repair showing top down occlusion which appears targeted and protrudes from the surface of the tubules.⁵

3 Formulations for every need!

