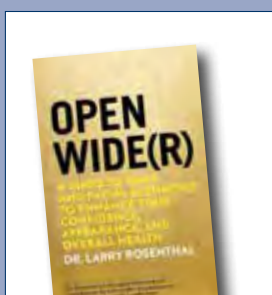


# today



## The author is in the building

Dr. Larry Rosenthal heads to the exhibit hall this afternoon to sign copies of his book.

»page 12



## The solution to your disinfection needs

How you can save money on handpieces and also be sure you're following CDC guidelines.

»page 36



## Head out and see New York City

Find art everywhere, take a trip to the top of the world and rent a bike to hit the town.

»page 52

• A social-media photo backdrop from the 2016 Greater New York Dental Meeting. (Photo/*today* Staff file photo)



## Just the beginning

By Robert Selleck, *today* Staff

■ Welcome to the city that never sleeps and the dental conference exhibit hall that never seems to slow down. At the outset of these next four days, the opportunities for visiting with exhibitors at the Greater New York Dental Meeting might feel as endless as the aisles are long. But in the same way attendees ultimately arrive at the end of an aisle, 5 p.m. Wednesday will likely arrive before you know it.

That's why the Crystal Palace of the Jacob K. Javits Convention Center on this opening day of exhibits fills with attendees shoulder to shoulder at the exhibit hall entrances in anticipation of the 9:30 a.m. opening. If New York City is the center of the universe, then certainly for these next four days, the

\*see *BEGINNING*, page 4

AD

## FREE Wireless Speaker!\*

Dentists, stop by the Morita booth for a short product presentation and get a FREE wireless bluetooth speaker.

**Booth #4615**

Wireless Bluetooth Speaker

\*Dentists ONLY. While supplies last. Offer valid during the Greater New York Dental Meeting, November 26 - 29, 2017. May be subject to reporting requirements for the Physician Payments Sunshine Act.

www.morita.com/usa  
1-888-JMORITA (566-7482)

AD

## Satisfied Patients

TERA GREENE, DDS

"It's a very tough thing to get people comfortable in dentures, but my patients love the feel of the Dentatus soft liner.

In fact, of the patients who are in both the system I used before and the Dentatus system, every single one prefers Dentatus. They're so happy, it's resulted in my schedule being freed up, and I'm doing more cases."

**LEARN ABOUT THE ATLAS SYSTEM AT GNYDM BOOTH #1714**

**Tested. Validated. Preferred.**

dentatususa.com (800) 323-3136



# Supra IPR<sup>®</sup>



## Safe & Stress-Free

The **ContacEZ IPR Strip System** makes interproximal reduction safe and stress-free. Innovative design and tactile control eliminate the risk of soft tissue damage. Built-in flexibility preserves natural, rounded contours. Systematized strips ensure accuracy and prevent over-reduction.

*Join us at Booth #3424 to learn about our new and innovative products and our convention special*

**CONTAC<sup>®</sup>EZ**  
Interproximal Solutions

GREATER  
**NY**  
DENTAL MEETING

**Booth  
#3424**



Visit  
Us  
Booth  
4408

# SHOFU BLOCK & DISK



## CAD/CAM CERAMIC-BASED RESTORATIVE



10mm x 12mm x 16mm  
12mm x 14mm x 18mm

98mm x 14mm

- Force-absorbing hybrid ceramic
- High wear resistance
- Tooth-like light transmission and fluorescence
- Excellent stain resistance
- Precise milling—fast chair time
- Easy high gloss polishing

Shofu Blocks & Disks HC are made of a unique hybrid ceramic material combination ensuring exceptional natural light transmission as well as high durability and flexural strength.

This new, highly aesthetic CAD/CAM material is suitable for a wide range of indications—including minimally invasive inlays, onlays, cosmetic veneers, full crowns for anterior and posterior teeth, and implant-supported restorations.



## NEW! BlockButler

### CAD/CAM Block Storage, Organizer & Display

- Holds 100 blocks
- Wall mount or store in drawers
- Fits all block brands\*

\*With the exception of PlanMill or PrograMill blocks. Trademarks belong to their manufacturers.

SCAN  
QR CODE  
for more  
information



Visit [www.shofu.com](http://www.shofu.com) or call 800.827.4638

Shofu Dental Corporation | San Marcos, CA





**BEGINNING** \*from page 1

GNYDM is at the center of dentistry.

Exhibit hall space was sold out long before today's opening, enabling attendees for the next four days to explore more than 1,600 booths occupied by more than 700 companies from across the globe.

Exhibitors are ready to provide straight-from-the-source insights on some of the industry's most innovative advancements in patient care and dental-practice efficiency and success. Reflecting recent-years' attendance trends, this year's final attendance roster is expecting to show more than 150 countries represented.

In acknowledgement of this international pull, the GNYDM participates in the U.S. Dept. of Commerce International Buyer Program, which

supports international purchasing of products exported from the United States. Among the benefits of this arrangement is that onsite multilingual personnel are available to help simplify and expedite international purchases of dental products and equipment.

This, in turn, has translated into an increase in exhibitors who specialize in overseas shipping and international sales.

Of course, the international flavor of the meeting isn't limited to the exhibit hall. Many of the meeting's workshops, seminars, panel discussions and other sessions are being offered in Spanish, French, Portuguese, Russian, Korean or Chinese.

Continuing the global focus, returning to the meeting this year is the World Implant Expo, which is

presented in partnership with the American Academy of Implant Dentistry, the International Congress of Implantologists and the European Academy of Osseointegration. Also returning is the Global Orthodontic Conference as well as the Dental Laboratory Technician four-day event.

New additions to the meeting's sector-focused offerings include a full-day Pediatric Dentistry Summit, an Airway Health Summit and the Dental "Healthcare" Conference.

It all adds up to a gathering of some of the world's most knowledgeable and forward-thinking dental professionals coming together to share ideas and innovations against the backdrop of one of the world's most dynamic and awe-inspiring cities. And, for today anyway, it's still just the beginning.

AD

**fdi** BUENOS AIRES 2018  
**World Dental Congress**

**Buenos Aires  
Argentina**  
5-8 September 2018

A PASSION FOR MANY, A COMMITMENT FOR ALL

**30 March 2018**  
ABSTRACT SUBMISSION  
DEADLINE

**1 June 2018**  
EARLY-BIRD  
REGISTRATION DEADLINE

[www.world-dental-congress.org](http://www.world-dental-congress.org)

**today**About  
the Publisher

Tribune America, LLC  
116 W. 23rd St., Suite 500  
New York, N.Y. 10011  
Phone: (212) 244-7181  
Fax: (212) 244-7185  
E-mail: [info@dental-tribune.com](mailto:info@dental-tribune.com)  
[www.dental-tribune.com](http://www.dental-tribune.com)

**Publisher & Chairman**  
Torsten Oemus  
[t.oemus@dental-tribune.com](mailto:t.oemus@dental-tribune.com)

**President/Chief Executive Officer**  
Eric Seid  
[e.seid@dental-tribune.com](mailto:e.seid@dental-tribune.com)

**Group Editor**  
Kristine Colker  
[k.colker@dental-tribune.com](mailto:k.colker@dental-tribune.com)

**Managing Editor**  
Fred Michmershuizen  
[f.michmershuizen@dental-tribune.com](mailto:f.michmershuizen@dental-tribune.com)

**Managing Editor**  
Sierra Rendon  
[s.rendon@dental-tribune.com](mailto:s.rendon@dental-tribune.com)

**Managing Editor**  
Robert Selleck  
[r.selleck@dental-tribune.com](mailto:r.selleck@dental-tribune.com)

**Product/Account Manager**  
Humberto Estrada  
[h.estrada@dental-tribune.com](mailto:h.estrada@dental-tribune.com)

**Product/Account Manager**  
Maria Kaiser  
[m.kaiser@dental-tribune.com](mailto:m.kaiser@dental-tribune.com)

**Product/Account Manager**  
Jordan McCumbee  
[j.mccumbee@dental-tribune.com](mailto:j.mccumbee@dental-tribune.com)

**Client Relations Coordinator**  
Leerol Colquhoun  
[l.colquhoun@dental-tribune.com](mailto:l.colquhoun@dental-tribune.com)

**Education Director**  
Christiane Ferret  
[c.ferret@dtstudyclub.com](mailto:c.ferret@dtstudyclub.com)

**Accounting Department**  
Nirmala Singh  
[n.singh@dental-tribune.com](mailto:n.singh@dental-tribune.com)

**dti** Dental  
Tribune  
International

**Published by Tribune America**  
© 2017 Tribune America, LLC  
All rights reserved.

today Greater New York Dental Meeting  
Show Dailies Vol. 12 appear during the  
Greater New York Dental Meeting in  
New York City, Nov. 26 to Nov. 29, 2017.

Tribune America makes every effort to report clinical information and manufacturers' product news accurately, but cannot assume responsibility for the validity of product claims, or for typographical errors. The publishers also do not assume responsibility for product names or claims, or statements made by advertisers.

Opinions expressed by authors are their own and may not reflect those of Tribune America or Dental Tribune International.



# NIGHTLASE®

Learn more about NightLase®  
at GNYDM Booth #3433

## Laser Snoring Treatment

NIGHTLASE is a leading-edge laser procedure for the treatment of snoring. It is a fast, NON-invasive, NO appliances effective way of increasing the quality of your patients sleep.



Learn more about NIGHTLASE Snoring Treatment, and how it can increase your patient's quality of sleep.



# LIGHTWALKER™

**The Endo, Perio, Hard & Soft Tissue,  
Sleep & Snore Laser Er:YAG & Nd:YAG Combo**

- **TwinLight™ Laser Perio:**  
Advanced Dual Wavelength
- **New Advanced SWEEPS® Photoacoustic Endo:**  
Effective & Exclusive
- **Ultra Fast, No Shot Cavity Preps**
- **Precise Fast Osseous Cutting/  
Shaping Procedures**
- **Bloodless, Suture Free Soft Tissue Procedures**
- **LightWalker™ patented ASP™  
Technology Powered  POWERED**



## LIGHTWALKER™ Go Pro with **17 in '17**

**12**  
+  
**5**

12 Months No  
Payments

\$5,000 Towards  
Handpieces & Training

**17**

Take your practice Pro in  
2017 with a Lightwalker

Doctors, Score Big At GNYDM Booth #3433

- GoPro Hero5 Giveaway!
- Tim Hardaway Jr. & Landon Collins jersey Giveaway!



**Enter To WIN Today!**



# New generation of CAD/CAM materials represents synergy of ceramics and composites

HC Block/Disk designed to minimize flaws attributed to esthetic and high-strength ceramics

By Shofu Dental Staff

■ Until recently, a clinician's decision was quite straightforward when selecting CAD/CAM restorations, as typically, tougher materials were associated with poor esthetics and excellent esthetics were associated with low strength.

Today, CAD/CAM crowns, bridges, inlays/onlays and veneers can be created with a multitude of materials, including ceramics (esthetic ceramics, high-strength ceramics, hybrid ceramics and zirconia), CAD/CAM composites, fiber-reinforced resins, polymers and metals.

Ceramics are by far the most common materials used to fabricate CAD/CAM restorations. In the pioneering years of CAD/CAM technology, feldspathic porcelain was the restorative material of choice for many clinicians as this material best matched the desired physical properties — excellent translucency and moderate strength.

While esthetic, porcelain is brittle with a low fracture toughness and a high proneness to failure in the presence of flaws.

To overcome this problem, new materials with greater strength were pursued.

First, leucite-reinforced then lithium-disilicate glass ceramics, both of which demonstrate higher flexural strength than porcelain. Tough and esthetic, when these materials are adequately prepped, handled and bonded they demonstrate a good success rate.

However, when the margins are thin, a bond to the underlying tooth is deficient or an adjustment is needed, the failure rate of restorations with high-strength ceramics tends to dramatically increase.

In response to the limitations of high-strength ceramics, new polymer-based resin-composite materials such as HC Block/Disk (Shofu) have been developed. This new category of materials, referred to as CAD/CAM composites and/or hybrid ceramics, represents the synergy of ceramics and composites with their respective beneficial mechanical properties.

Intended to provide clinicians



• Full-contour HC Block/Disk crown (Shofu) with a short implant (Bicon). Restoration was characterized with Lite Art Stains (Shofu). (Photo/Courtesy of Muneki Hirayama, DMD, Boston, Mass.)

with the capability of restoring teeth in one appointment, HC Block/Disk represents a generation of new CAD/CAM composites, according to Shofu, the company behind the product.

It features a unique nanostructure, polymerization mode, matrix composition, augmented filler content and a highly homogenous formulation designed to minimize flaws attributed to esthetic and high-strength ceramics.

Composed of 61-percent zirconium silicate embedded in a high-temperature/high-pressure polymer matrix, a densely packed nanofiller of HC Block/Disk forms a skeleton that uniformly absorbs masticatory forces and promotes resistance to breakdown phenomena.

When compared to other CAD/CAM materials, HC Block/Disk manifests better machinability in terms of milling time, damage tolerance,

## Here in New York

To learn more about the HC Block/Disk, stop by the Shofu booth, No. 4408.

wear of CAD/CAM instruments and the ability to be milled in a very low thickness, according to the company.

The high flexural strength of 191 MPa and Vickers hardness of 66 Hv0.2 make HC Block/Disk a good candidate for posterior restorations, implant-supported cases and long-term provisionals.

Additionally, the hardness of the material also demonstrates values closer to dentin (ca. 65 Hv0.2), and thus no excessive antagonist wear can be observed, which is a concern when using conventional ceramics.

Repairs of porcelain, zirconia and

**'When compared to other CAD/CAM materials, HC Block/Disk manifests better machinability in terms of milling time, damage tolerance, wear of CAD/CAM instruments and the ability to be milled in a very low thickness'**

other ceramic materials have proven to be challenging. However, with HC Block/Disk, restorations can successfully be adjusted chairside with either a direct resin composite such as Beautifil Flow Plus (Shofu) or an indirect composite such as Ceramage (Shofu).



THE **#1 DISRUPTOR** IN ACQUIRING QUALITY IMAGES IS PATIENT MOVEMENT.

Patients are not statues,  
they are going to move.

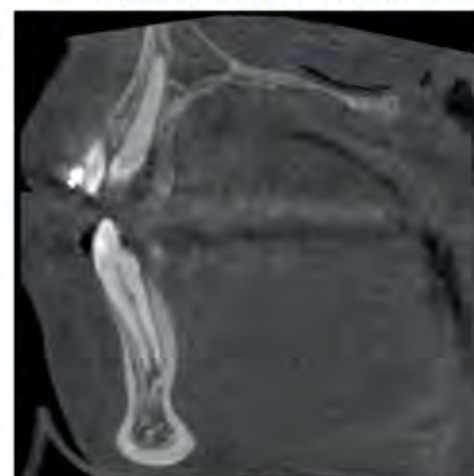
DON'T GET FRUSTRATED  
**GET CALM**



Without Planmeca CALM™



With Planmeca CALM™



Exclusive to all Planmeca ProMax® 3D Imaging Systems



*"I had a patient that came in with Parkinson's Disease, this disease poses a problem for a CBCT machine due to tremors. With CALM Software (Correction Algorithm for Latent Movement), I was able to take an image that had little to no scatter which was impossible before."*

Dr. Mike Moroni - General Practitioner, Castle Rock, CO

2017 Greater New York Dental Meeting  
**Booth #5425**

Learn more about CALM!  
[www.planmeca.com/na/Imaging/calm](http://www.planmeca.com/na/Imaging/calm)



**PLANMECA CALM™**

Planmeca USA, Inc | 100 N. Gary Ave., Suite A, Roselle IL, 60172 | (630) 529 2300 | [www.planmecausa.com](http://www.planmecausa.com)



# MEISINGER's 2018

## 8<sup>th</sup> Annual High Altitude Comprehensive Implant Symposium

January 31, 2018- February 3, 2018

Vail, Colorado USA • Vail Marriott

REGISTER  
NOW FOR A  
GREAT DISCOUNT  
DURING THE  
GNYDM SHOW!

Visit  
MEISINGER  
at Booth  
#3700



**Michael S. Block, DMD**  
A Practical Digital Workflow with CT Planning



**Farhad Boltchi, DMD, MS**  
Digital Implant Dentistry – The Next Frontier



**Greg Campbell, DDS**  
The Ultimate Digital Flow: Restoratively Driven Implant Planning and Restoration Fabrication: Efficient, Predictable, and Repeatable



**Daniel Cullum, DDS**  
Horizontal Augmentation: What, Where and Why?



**George Duello, DDS, MS**  
Resective Therapies in Dentistry-Slash for Cash



**Scott Ganz, DMD**  
3-D Imaging and 3-D Printing as a Simulation Aid for Bone Grafting and Dental Implant Procedures



**Robert Gellin, DMD, MHS, FACD**  
A Simplified Technique for Block Grafting



**Arne Hoffmann, PhD, DDS, CDT, CDA**  
Soft Tissue Management Around Implants and How to Optimize the Transition from the Temporary to the Final Restoration



**Dwayne Karateew, DDS**  
Abutment Modification, Implant Provisionalization and Electrochemical Anodization of the Ti Alloy Abutment



**Aldo Leopardi, BDS, DDS, MS**  
Aesthetic Zone Clinical Realities: Regenerative Approaches Verses Prosthetic Equivalents



**Mark Lucas, DDS**  
Rise of Placental Tissue Products: Implications in Dentistry & Medicine



**Mario Rocuzzo, DDS**  
Regenerative Treatment of Peri-Implantitis Defects



**John Russo, DDS, MHS**  
A Decision Tree for Block Grafting



**Deborah Schwartz-Arad, DMD, PhD**  
Recovering the Maxilla & the Lip Support Advantages of Combined Therapy

MEISINGER USA, L.L.C.

10200 E. Easter Ave. • Centennial, Colorado 80112 • USA

Tel.: +1 (303) 268-5400 • Fax: +1 (303) 268-5407

www.meisingerusa.com • customerservice@meisingerusa.com

Meisinger  
since  
1888



# Henry Schein is showcasing digital solutions here at the Greater New York Dental Meeting

By Henry Schein Dental Staff

■ Henry Schein Dental is featuring a lineup of solutions and educational programming at its booth, No. 4225. Attendees can expect to learn about Henry Schein ConnectDental digital solutions, Merchandise/Exclusives, Henry Schein Practice Solutions, Office Design, ProRepair and Glove Club.

In addition, Team Schein Members will engage in discussions with industry leaders via #ScheinChats, Henry Schein's signature social media series available on Facebook Live.

Throughout the show, Henry Schein will showcase digital technology solutions, including scanners, milling units, 3-D printers, abutment solutions and the latest materials from the company's digital platform, Henry Schein ConnectDental.

Members of the Henry Schein Dental leadership team, as well as representatives from 3M, 3Shape, ACTEON, Dentsply Sirona, DEXIS, FORMLABS, i-CAT and Planmeca, will be available

## Here in New York

Stop by the Henry Schein Dental booth, No. 4225, during the meeting for product demonstrations and a series of in-booth presentations.

to answer questions, suggest customized solutions and demonstrate new products, such as the 3M™ True Definition Mobile Scanner, 3Shape TRIOS® 3 Wireless Intraoral Scanner, Planmeca Emerald™ next-gen intraoral scanner, Planmeca ProMax® 3D LE and more.

The company's exclusive products will also be demonstrated, including The Wand® from Wand Dental, restorative solutions from Clinician's Choice® Dental Products and the Precise®SHP and LTM Lasers by the CAO Group.

## Supporting education

Education, integration and support are the cornerstone of Henry Schein's commitment to helping customers

adopt the digital workflow with confidence and succeed in their practice. Throughout the meeting, Henry Schein and its supplier partners will host a series of in-booth presentations and demonstrations.

## Today

- 1 p.m.: Schein "digiTALK" panel discussion featuring Dentsply Sirona
- 3 p.m.: A 2017 Guide to CAD/CAM and Chairside Milling (2 CE credit take home)

## Monday

- 11 a.m.: 3Shape Trios Wireless, Live
- 1 p.m.: Schein digiTALK panel discussion featuring Planmeca
- 3 p.m.: Streamlining the Implant and Ortho Workflow (2 C.E. credit take home)

## Tuesday

- 11 a.m.: A 2017 Guide to Digital Impressions (2 CE credit take home)
- 1 p.m.: Schein digiTALK panel discussion featuring i-CAT and Dexis

- 3 p.m.: Does Brand Matter in Dentistry?

## Wednesday

- 11 a.m.: Marketing Myths and Realities for Dentists

## Thought leader conversations

The Henry Schein Media Studio will serve as the broadcast center, featuring #ScheinChats, the company's signature social media series available on Facebook Live that will offer conversations offering perspectives from oral health professionals, non-profits and industry-leading supplier partners. This includes a discussion between Stanley M. Bergman, chairman and chief executive officer of Henry Schein, and Tanya Sue Maestas, president of the American Student Dental Association, who will share their perspectives on the advent of technology-enhanced learning in dental schools. Visit Henry Schein Dental's Facebook page to watch the livestream: [www.facebook.com/HenryScheinDental](http://www.facebook.com/HenryScheinDental).

AD

# OSADA ENAC OE-F15



## PIEZOELECTRIC ULTRASONIC SYSTEM WITH EXTENDED POWER

APPLICATIONS INCLUDE (BUT ARE NOT LIMITED TO):

- ✓ Osteotomy (bone dissection)
- ✓ Osseous expansion
- ✓ Osteoplasties (bone tissue collection cortical and medullary)
- ✓ Implant preparations
- ✓ Atraumatic extractions
- ✓ Excisions of bone torus
- ✓ Sinus window opening
- ✓ Sinus membrane separations
- ✓ Smoothing margins of bone and alveolar ridge
- ✓ Cleaning deep sockets
- ✓ Endodontic and periodontic procedures



## OSADA ENAC OE-F15 UNIT DELIVERS:

- ✓ Powerful, safe bone-cutting
- ✓ Fine, precise cutting results
- ✓ Tips that cut bone faster with minimal injury
- ✓ Built-in peristaltic pump that minimizes temperature increases
- ✓ Autoclavable irrigation accessories, handpiece hose assembly and handpiece holder
- ✓ Waterproof, detachable foot switch
- ✓ LED light that illuminates surgical area
- ✓ All tips are interchangeable with ENAC OE-W10 unit, however ENAC OE-F15 unit with extended power provides highly efficient results with surgical tips in bone cutting



Osada's NEW 180°  
Serrated Bone-Cutting Tip  
**ST125**



OSADA, INC. • 3000 S. Robertson Blvd., Suite 130 • Los Angeles, CA 90034 • [WWW.OSADAUSA.COM](http://WWW.OSADAUSA.COM)  
800-426-7232 or 310-841-2220 • Email: [info@osadausa.com](mailto:info@osadausa.com)