

DENTAL TRIBUNE

— The World's Dental Newspaper • ASEAN Edition —



**Poor oral hygiene could
affect accuracy of
SARS-CoV-2 test**

**Artificial
intelligence
may help
predict
implant
treatment
outcomes**

**COVID-19 and the dental market:
the pandemic continues to bite**





More control. More confidence. It all starts here.

Performance. Productivity.
Profitability. What could you
gain by fine-tuning and
streamlining your procedure?

3M Direct Restorative Solutions
are designed to help navigate
your way to restorative success
by giving you more control at
every step.

3M Direct Restorative Solutions



Shade
Selection



Technique
Selection



Adhesive
Application



Composite
Placement



Light Curing



Finishing &
Polishing



Protection

..... Sign up now for a giveaway: <http://go.3M.com/4xbv>

For Healthcare Professionals only

Scan Here





We partner with professionals to **Improve Lives**

Our well-known companies – which include Kerr, Nobel Biocare, and Ormco – represent more than 125 years of dental industry excellence.

We have been serving the comprehensive needs of the entire dental care community in pursuit of enhancing oral health.

For enquiry, please WhatsApp:



Ms. Elaine

+60 18-208 3830

Ms. Kang

+60 12-483 8876

KaVo Kerr Group Malaysia Sdn. Bhd.

Unit 13-01, Oval Tower @ Damansara,

No, 685, Jalan Damansara, Taman Tun Dr Ismail,
60000 Kuala Lumpur, Malaysia.

Tel: +603-7733 8286



FB page: Nobel Biocare SEA



Ormco APAC

Kerr™



**Nobel
Biocare™**

Ormco™

EDITOR'S MESSAGE

We are proud to present to you the inaugural *Dental Tribune ASEAN Edition!*

The world's dental newspaper is now in Malaysia, sharing with you the latest news on dentistry which covers various topics from region to world news, event updates, innovations, research, and clinical section.

Dental Tribune International (DTI), based in Leipzig, Germany, has been in the dental publishing business since 2003 and has grown substantially over the last ten years. Today, the DTI publishing group is composed of the world's leading dental trade publishers and this partnership with FBI Publications (M) Sdn Bhd is expected to flourish!

Our international team of journalists and writers will bring you the latest news in the industry to deliver you worthwhile and compelling articles and interviews to ensure you are always up to date.

Making its debut in Malaysia, our news will provide you exclusive insights and content into the dentistry world.



Susan Tricia
Editor

DT ASEAN will also be circulated in dental exhibitions, seminars and even webinars in Malaysia providing additional mileage for advertisers of the magazine and reaching out to new subscribers.

So go ahead and indulge in this edition and keep the feedback coming in to ensure our writers are providing you with a quality read always!

Malaysia Publishing Partner

FBI Publications (M) Sdn Bhd



9-3, Jalan PJU 5/6, Dataran Sunway, 47810, Petaling Jaya, Selangor

Tel: +603-6151 9178

Email: my@fireworksbi.com

International Headquarters



Publisher and Chief Executive Officer

Torsten R. Oemus

Chief Content Officer

Claudia Duschek

Dental Tribune International

GmbH Holbeinstr. 29, 04229 Leipzig, Germany
Tel.: +49 341 4847 4302 | **Fax:** +49 341 4847 4173

General requests

info@dental-tribune.com

Sales requests

ASEAN region:

vanny@fireworksbi.com
asean.dental-tribune.com

Europe region:

mediasales@dental-tribune.com
www.dental-tribune.com

Publisher

FBI Publications (M) Sdn. Bhd.

Marketing Communication

Nur Izyan binti Dzulkifli
izyandzul@fireworksbi.com

Publication Manager

Vanny Lim
vanny@fireworksbi.com

Assistant Editor

Atthira Zawana
atthirah@fireworksbi.com

Creative Designer

Muhammad Fadzil
design@fireworksbi.com

Board of Directors

Kenny Yong
Susan Tricia

Official Magazine of



Disclaimer

Material from Dental Tribune International GmbH that has been reprinted or translated and reprinted in this issue is copyrighted by Dental Tribune International GmbH. Such material must be published with the permission of Dental Tribune International GmbH. *Dental Tribune* is a trademark of Dental Tribune International GmbH. All rights reserved. © 2021 Dental Tribune International GmbH. Reproduction in any manner in any language, in whole or in part, without the prior written permission of Dental Tribune International GmbH is expressly prohibited. Dental Tribune International GmbH makes every effort to report clinical information and manufacturers' product news accurately but cannot assume responsibility for the validity of product claims or for typographical errors. The publisher also does not assume responsibility for product names, claims or statements made by advertisers. Opinions expressed by authors are their own and may not reflect those of Dental Tribune International GmbH.

Dental Tribune International GmbH, FBI Publications (M) Sdn Bhd nor its affiliated entities make any promises, implied or otherwise, about the fitness of any technique, piece of equipment, or material for a particular purpose.

Dental Tribune International GmbH, FBI Publications (M) Sdn Bhd, or its affiliated entities will not be liable for any damages of any kind or loss of profits that might arise from information found in this magazine regardless of whether Dental Tribune International GmbH has been advised of the possibility of such damages.

The material contained in this magazine is offered as information only and should not be used to replace any practice, financial, accounting, legal, or other professional advice that users might obtain from their own professional advisors.

Information in this magazine should not be substituted for the individual judgment brought to each clinical situation by a patient's dental practitioner. The techniques and opinions presented on this site reflect the science of dentistry at a particular point in time, and users should be aware that continued research on these topics may provide new knowledge or recommendations.

Dental Tribune International GmbH and FBI Publications (M) Sdn Bhd does not necessarily endorse the non-Dental Tribune International resources that may appear or be referenced in this magazine and offer no guarantee about the products or services they may provide.

Some sections in this magazine are published by separate organizations or entities, which are solely responsible for their content. Statements appearing in those portions are not necessarily endorsed by Dental Tribune International GmbH, FBI Publications (M) Sdn Bhd, or any of its subsidiaries. Also, Dental Tribune International GmbH and FBI Publications (M) Sdn Bhd does not offer any guarantee with respect to the accuracy of any items or claims contained therein.

Dental Tribune International GmbH and FBI Publications (M) Sdn Bhd does not, via this magazine or any of its affiliated media, encourage dentists to make any particular business decision based on issues addressed herein. Business decisions and decisions about individual patients and methods of practice are personal decisions, and the responsibility for these decisions rests upon the shoulders of the attending dental practitioner.

– CS 12460 VELVET –



LOVE YOUR GUMS

GOLD
STANDARD
FOR GENTLE
CLEANING

WONDERFULLY GENTLE – MORE THAN TWICE AS MANY BRISTLES AS OUR HIGHLY SUCCESSFUL CS 5460 ULTRA SOFT TOOTHBRUSH: AN UNMATCHED 12,460 CUREN® FILAMENTS, EACH WITH A DIAMETER OF 0.08 MM.

1. Toothbrushes are too hard.

At first, the damage caused by brushing is microscopic. Over the years, however, it can lead to abrasions, recession and pain. The CS 12460 velvet helps to prevent these symptoms.

2. We often brush our teeth in a hurry.

The CS 12460 velvet turns brushing into a ritual that people enjoy taking their time over, not least thanks to how gentle the brush is.

Made in Switzerland.

CURAPROX

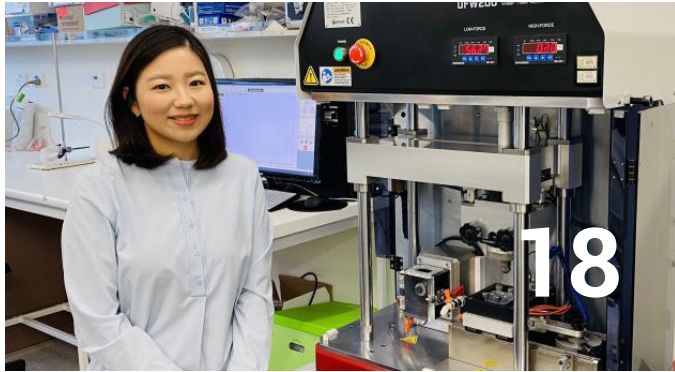
 SWISS PREMIUM ORAL CARE

CONTENTS

Clinical news

08

The use of new technologies and digital implant solutions in a one-stage surgical procedure



Innovations

12

Artificial intelligence may help predict implant treatment outcome

14

DentalCAD 3.0 Galway: exocad announces roll-out

16

I built PearlII to improve access to dental care and oral health education



Regional news

18

Dental researcher is developing more aesthetic crowns for children

19

Poor oral hygiene could affect accuracy of SARS-CoV-2 tests



World news

20

Tobacco smoking associated with periodontal pocket development

21

Transmission of SARS-CoV-2 in dental offices very unlikely, study says

22

Back pain—a clinician's nightmare

25

The importance of pain management for young dental patients

26

Dental biofilm of symptomatic COVID-19 patients harbours SARS-CoV-2

28

Europe's clear aligner market heats up as Impress opens new production facility

In the hot seat

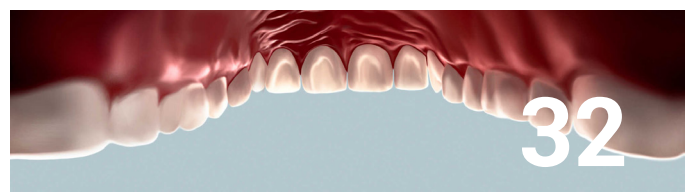
30

How can dentists and pharmacists collaborate and improve patients' health?

Business

32

COVID-19 and the dental market: the pandemic continues to bite



Planmeca Viso™ imaging Powered by Romexis® software



Romexis 6.0 makes your work flow

Our revolutionary Planmeca Romexis® software provides an all-in-one solution for all specialities and for clinics of all sizes. As an open software platform, Romexis allows capturing, viewing and processing all types of data – also from 3rd party devices – in the same system. With Romexis, you have the freedom to choose your own ways of working.



Live virtual FOV positioning

See the patient live from the unit's control panel for flexible and exact FOV positioning



Planmeca CALM™

Our new patient movement correction algorithm – for perfect results every time



Planmeca Ultra Low Dose™

Enables CBCT imaging with an even lower dose than panoramic imaging



Freely adjustable volume

Adjustable volume sizes to cover all clinical needs – from the smallest to largest FOVs

Planmeca Viso G7 Ø3x3 to Ø30x30 cm
Planmeca Viso G5 Ø3x3 to Ø20x17 cm



Planmeca ARA™

Efficiently removes shadows and streaks caused by metal from 3D images



Planmeca AINO™

Removes noise from CBCT images without losing valuable details

Find more info and your local dealer www.planmeca.com

PLANMECA



YEARS OF LEADING THE WAY

The use of new technologies and digital implant solutions in a one-stage surgical procedure

By Dr Michał Nawrocki, Poland

The aim of this article is to present a case of single-tooth prosthetic restoration in the aesthetic zone step by step. The patient was referred to our clinic with a fractured root of tooth #11 (Fig. 1). The cone beam computed tomography (CBCT) analysis confirmed the fracture and revealed external resorption of the root from the vestibular side (Fig. 2). The tooth had to be extracted, and it was decided to follow immediate implant placement with a temporary aesthetic implant restoration. The immediate implant placement was planned with short-term non-occlusal loading.

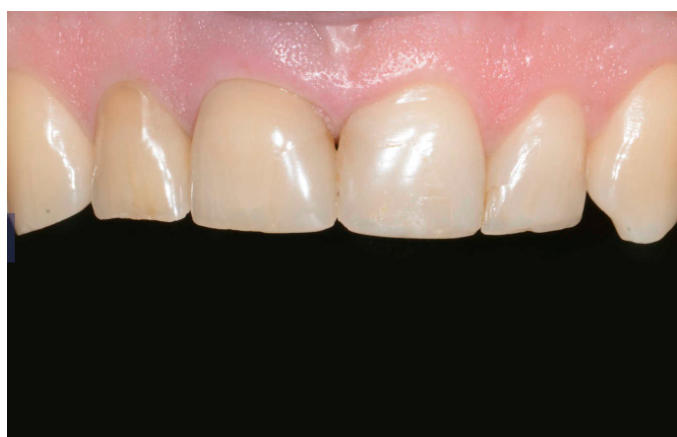


Fig. 1: Situation before treatment, which led to the decision to extract tooth #11



Fig. 2: CBCT scan: the root of the tooth was visibly fractured, and there was clear external resorption of the root from the vestibular side.

With the use of the CEREC Omnicam scanner (Dentsply Sirona), scans were taken of both the maxillary and the mandibular full arches along with a buccal scan (Fig. 3). The scans, together with the DICOM files, were uploaded to the Simplant software (Dentsply Sirona; Figs. 4 & 5).

The optimal position was planned for an Ankylos C/X B 14 implant (Dentsply Sirona) in line with the 3A–2B rule.¹ Using the Simplant software, a Simplant Guide, along with a patient-specific Atlantis CustomBase Solution (with a titanium nitride abutment surface; Dentsply Sirona) and digital files, were ordered using Atlantis Core File (Dentsply Sirona).



Fig. 3: Buccal scan: information on the positioning of the maxilla relative to the mandible. This is absolutely necessary for designing a crown.

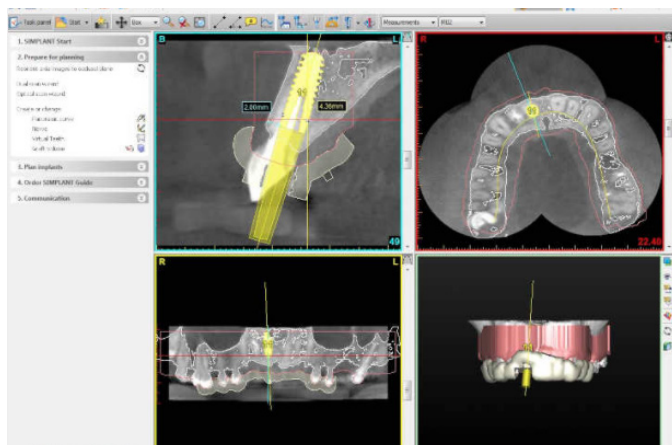


Fig. 4: Designing the guide in the Simplant software based on the planned implant position.

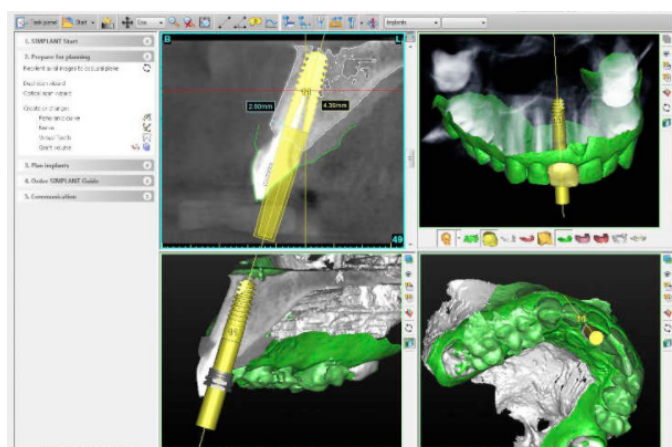


Fig. 5: Overlaying the CBCT and CEREC intra-oral scans, as well as the planned implant position, in the Simplant software.

The digital files were used to design and manufacture a screw-retained Atlantis crown for implant #11 in the CEREC CAD/CAM system (Dentsply Sirona). All the components, the Simplant Guide, the Atlantis abutment and the temporary crown, using CEREC, were manufactured and delivered prior to the surgical procedure (Figs. 6–8).

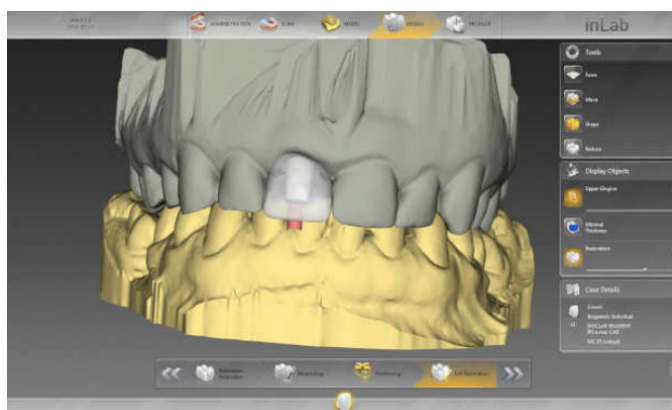


Fig. 6: Planning the shape and size of the future CAD/CAM full ceramic crown in cut-back technique in the inLab software (Dentsply Sirona) based on the Atlantis Core Fire received.

After precise planning, the tooth was extracted. At the resorption and fracture area of tooth #11, granulation tissue was clearly visible (Fig. 9). The granulation tissue was removed with an Er:YAG laser (H14 handpiece, Fotona; Fig. 10). The extraction was atraumatic and the socket clean and ready for implant placement (Fig. 11).



Fig. 7: Full ceramic crown milled in the CEREC CAD/CAM system before sintering. As can be seen in the images, the Atlantis Abutment and the crown would fit perfectly together.



Fig. 8: The completed screw-retained IPS e.max crown ready to be cemented extra-orally with the Atlantis abutment (titanium nitride abutment surface).

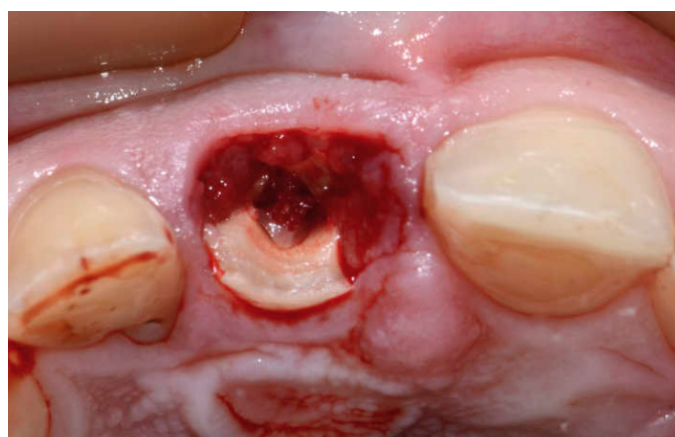


Fig. 9: Visible granulation tissues at the resorption and fracture area of tooth #11.