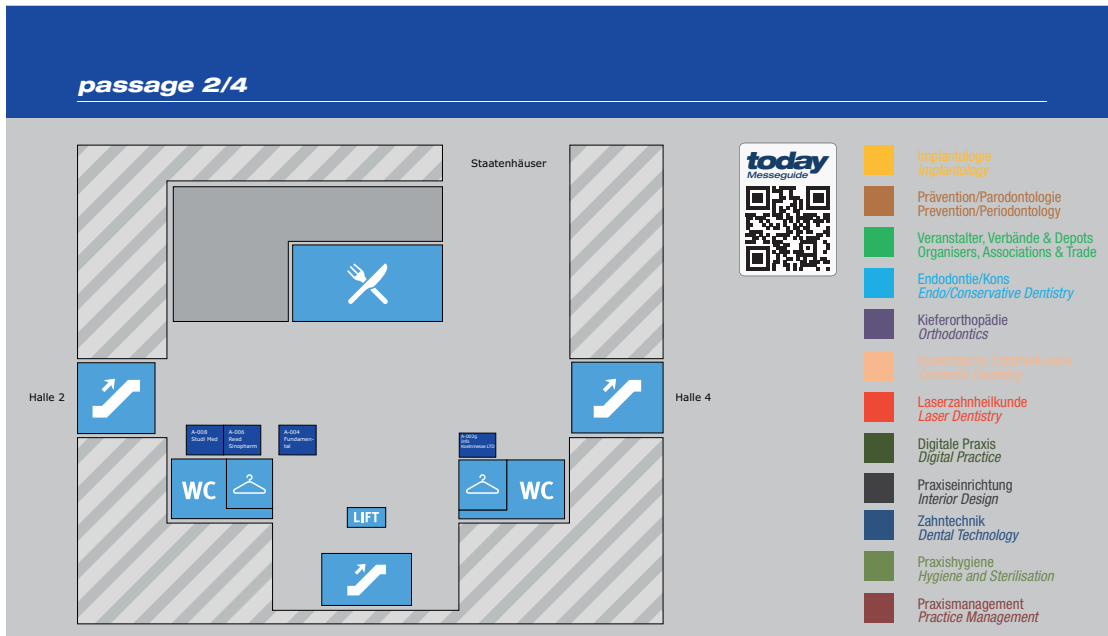


today

FLOOR PLAN

38th International Dental Show Cologne • 12-16 March, 2019



Einfach aus
10 Minuten Gespräch
365 Tage Erfolg
machen.

Erleben Sie effizientes Factoring so entspannt wie nie.
Auf der IDS 2019, Halle 11.3 Stand K020/L029.

BFS
health finance
Einfach. Machen.



Praxishygiene
Hygiene and Sterilisation
Praxismanagement
Practice Management

Praxisneinrichtung
Interior Design
Zahntechnik
Dental Technology

Laserzahnheilkunde
Laser Dentistry
Digitale Praxis
Digital Practice

Kieferorthopädie
Orthodontics
Konservative Zahnheilkunde
Conservative Dentistry

Veranstalter, Verbände & Depots
Organisers, Associations & Trade
Endodontie/Kons
Endo/Conservative Dentistry

Implantologie
Implantology
Prävention/Parodontologie
Prevention/Periodontology

Trend Index

G-000 Zaner Dental Company	G-001 Dixux Wipac Apo-Deo Tc. Ltd.	F-000 OSD Europe Lyon, SA	F-001 TOSCOGOLD Co. Ltd.	E-000 CRUKELL	G-002 Korea Dental Solution Co., Ltd.	F-002 Conemed Co., Ltd.	E-010 E-011 Frank Dental GmbH	E-012 Trelacher Helmstedt AG	D-012 Xiral Systems GmbH & Co. KG	C-010 D-011 ELSDENT	C-012 D-012 Dentech Corporation	B-010 C-010 DSDO Europe	B-010 American Orthodontics GmbH	A-010 SUN Implant System	A-011 SUN Implant System	A-012 JAM International GmbH	A-013 JAM International GmbH	A-014 JAM International GmbH	A-015 JAM International GmbH	A-016 JAM International GmbH	A-017 JAM International GmbH	A-018 JAM International GmbH	A-019 JAM International GmbH	A-020 JAM International GmbH	A-021 JAM International GmbH	A-022 JAM International GmbH	A-023 JAM International GmbH	A-024 JAM International GmbH	A-025 JAM International GmbH	A-026 JAM International GmbH	A-027 JAM International GmbH	A-028 JAM International GmbH	A-029 JAM International GmbH	A-030 JAM International GmbH	A-031 JAM International GmbH	A-032 JAM International GmbH	A-033 JAM International GmbH	A-034 JAM International GmbH	A-035 JAM International GmbH	A-036 JAM International GmbH	A-037 JAM International GmbH	A-038 JAM International GmbH	A-039 JAM International GmbH	A-040 JAM International GmbH	A-041 JAM International GmbH	A-042 JAM International GmbH	A-043 JAM International GmbH	A-044 JAM International GmbH	A-045 JAM International GmbH	A-046 JAM International GmbH	A-047 JAM International GmbH	A-048 JAM International GmbH	A-049 JAM International GmbH	A-050 JAM International GmbH	A-051 JAM International GmbH	A-052 JAM International GmbH	A-053 JAM International GmbH	A-054 JAM International GmbH	A-055 JAM International GmbH	A-056 JAM International GmbH	A-057 JAM International GmbH	A-058 JAM International GmbH	A-059 JAM International GmbH	A-060 JAM International GmbH	A-061 JAM International GmbH	A-062 JAM International GmbH	A-063 JAM International GmbH	A-064 JAM International GmbH	A-065 JAM International GmbH	A-066 JAM International GmbH	A-067 JAM International GmbH	A-068 JAM International GmbH	A-069 JAM International GmbH	A-070 JAM International GmbH	A-071 JAM International GmbH	A-072 JAM International GmbH	A-073 JAM International GmbH	A-074 JAM International GmbH	A-075 JAM International GmbH	A-076 JAM International GmbH	A-077 JAM International GmbH	A-078 JAM International GmbH	A-079 JAM International GmbH	A-080 JAM International GmbH	A-081 JAM International GmbH	A-082 JAM International GmbH	A-083 JAM International GmbH	A-084 JAM International GmbH	A-085 JAM International GmbH	A-086 JAM International GmbH	A-087 JAM International GmbH	A-088 JAM International GmbH	A-089 JAM International GmbH	A-090 JAM International GmbH	A-091 JAM International GmbH	A-092 JAM International GmbH	A-093 JAM International GmbH	A-094 JAM International GmbH	A-095 JAM International GmbH	A-096 JAM International GmbH	A-097 JAM International GmbH	A-098 JAM International GmbH	A-099 JAM International GmbH	A-100 JAM International GmbH
-------------------------------	--	---------------------------------	-----------------------------	------------------	--	----------------------------	----------------------------------	------------------------------------	---	------------------------	------------------------------------	----------------------------	--	-----------------------------	-----------------------------	---------------------------------	---------------------------------	---------------------------------	---------------------------------	---------------------------------	---------------------------------	---------------------------------	---------------------------------	---------------------------------	---------------------------------	---------------------------------	---------------------------------	---------------------------------	---------------------------------	---------------------------------	---------------------------------	---------------------------------	---------------------------------	---------------------------------	---------------------------------	---------------------------------	---------------------------------	---------------------------------	---------------------------------	---------------------------------	---------------------------------	---------------------------------	---------------------------------	---------------------------------	---------------------------------	---------------------------------	---------------------------------	---------------------------------	---------------------------------	---------------------------------	---------------------------------	---------------------------------	---------------------------------	---------------------------------	---------------------------------	---------------------------------	---------------------------------	---------------------------------	---------------------------------	---------------------------------	---------------------------------	---------------------------------	---------------------------------	---------------------------------	---------------------------------	---------------------------------	---------------------------------	---------------------------------	---------------------------------	---------------------------------	---------------------------------	---------------------------------	---------------------------------	---------------------------------	---------------------------------	---------------------------------	---------------------------------	---------------------------------	---------------------------------	---------------------------------	---------------------------------	---------------------------------	---------------------------------	---------------------------------	---------------------------------	---------------------------------	---------------------------------	---------------------------------	---------------------------------	---------------------------------	---------------------------------	---------------------------------	---------------------------------	---------------------------------	---------------------------------	---------------------------------	---------------------------------	---------------------------------	---------------------------------	---------------------------------	---------------------------------	---------------------------------	---------------------------------	---------------------------------



G-008 BENTONIC LLC	F-009 Global Dental School Europe BV/AviDent Digital Dental Solutions	C-008 Mito Medical	B-008 ZEVACENT e. V.	A-008 EG Medical SL
G-010 CESS Dental Smart Solutions GmbH Terra Medical S.L.	F-010 HARVESTOR DENTAL HARVESTOR DENTAL HARVESTOR DENTAL HARVESTOR DENTAL	C-010 MEDICAL S.A.	B-010 Angela Int. de Prod. Cosméticos SA	A-010 PROCONT Dentimarket GmbH
G-012 Charming Page Dental Medical Corporation	F-012 K-Lab Europe GmbH	C-012 SOL SA	B-012 Tosca Sella srl	A-012 Dental Technologies DE GmbH
G-013 Charming Page Dental Medical Corporation	F-013 Alph Technology B.V. Vestral Ltd.	C-013 Dentimarket - D.M.TE SINUS DENT Innovative S.L.	B-013 BIO C-DENT Bio 3 Specialty GmbH	A-013 Dental Technologies DE GmbH
G-015 Rohde Technolgy Ltd. Gb.	F-015 MEDIOTEC	C-015 EQUUS S.p.A.	B-015 Dental H Tec	A-015 Medit Dental S.V.
G-016 Rohde Technolgy Ltd. Gb.	F-016 MEDIOTEC	C-016 EQUUS S.p.A.	B-016 Dental H Tec	A-016 Medit Dental S.V.
G-017 Rohde Technolgy Ltd. Gb.	F-017 MEDIOTEC	C-017 EQUUS S.p.A.	B-017 Dental H Tec	A-017 Medit Dental S.V.
G-018 Rohde Technolgy Ltd. Gb.	F-018 MEDIOTEC	C-018 EQUUS S.p.A.	B-018 Dental H Tec	A-018 Medit Dental S.V.
G-019 Rohde Technolgy Ltd. Gb.	F-019 MEDIOTEC	C-019 EQUUS S.p.A.	B-019 Dental H Tec	A-019 Medit Dental S.V.
G-020 Rohde Technolgy Ltd. Gb.	F-020 MEDIOTEC	C-020 EQUUS S.p.A.	B-020 Dental H Tec	A-020 Medit Dental S.V.
G-021 Rohde Technolgy Ltd. Gb.	F-021 MEDIOTEC	C-021 EQUUS S.p.A.	B-021 Dental H Tec	A-021 Medit Dental S.V.
G-022 Rohde Technolgy Ltd. Gb.	F-022 MEDIOTEC	C-022 EQUUS S.p.A.	B-022 Dental H Tec	A-022 Medit Dental S.V.
G-023 Rohde Technolgy Ltd. Gb.	F-023 MEDIOTEC	C-023 EQUUS S.p.A.	B-023 Dental H Tec	A-023 Medit Dental S.V.
G-024 Rohde Technolgy Ltd. Gb.	F-024 MEDIOTEC	C-024 EQUUS S.p.A.	B-024 Dental H Tec	A-024 Medit Dental S.V.
G-025 Rohde Technolgy Ltd. Gb.	F-025 MEDIOTEC	C-025 EQUUS S.p.A.	B-025 Dental H Tec	A-025 Medit Dental S.V.
G-026 Rohde Technolgy Ltd. Gb.	F-026 MEDIOTEC	C-026 EQUUS S.p.A.	B-026 Dental H Tec	A-026 Medit Dental S.V.
G-027 Rohde Technolgy Ltd. Gb.	F-027 MEDIOTEC	C-027 EQUUS S.p.A.	B-027 Dental H Tec	A-027 Medit Dental S.V.
G-028 Rohde Technolgy Ltd. Gb.	F-028 MEDIOTEC	C-028 EQUUS S.p.A.	B-028 Dental H Tec	A-028 Medit Dental S.V.
G-029 Rohde Technolgy Ltd. Gb.	F-029 MEDIOTEC	C-029 EQUUS S.p.A.	B-029 Dental H Tec	A-029 Medit Dental S.V.
G-030 Rohde Technolgy Ltd. Gb.	F-030 MEDIOTEC	C-030 EQUUS S.p.A.	B-030 Dental H Tec	A-030 Medit Dental S.V.
G-031 Rohde Technolgy Ltd. Gb.	F-031 MEDIOTEC	C-031 EQUUS S.p.A.	B-031 Dental H Tec	A-031 Medit Dental S.V.
G-032 Rohde Technolgy Ltd. Gb.	F-032 MEDIOTEC	C-032 EQUUS S.p.A.	B-032 Dental H Tec	A-032 Medit Dental S.V.
G-033 Rohde Technolgy Ltd. Gb.	F-033 MEDIOTEC	C-033 EQUUS S.p.A.	B-033 Dental H Tec	A-033 Medit Dental S.V.
G-034 Rohde Technolgy Ltd. Gb.	F-034 MEDIOTEC	C-034 EQUUS S.p.A.	B-034 Dental H Tec	A-034 Medit Dental S.V.
G-035 Rohde Technolgy Ltd. Gb.	F-035 MEDIOTEC	C-035 EQUUS S.p.A.	B-035 Dental H Tec	A-035 Medit Dental S.V.
G-036 Rohde Technolgy Ltd. Gb.	F-036 MEDIOTEC	C-036 EQUUS S.p.A.	B-036 Dental H Tec	A-036 Medit Dental S.V.
G-037 Rohde Technolgy Ltd. Gb.	F-037 MEDIOTEC	C-037 EQUUS S.p.A.	B-037 Dental H Tec	A-037 Medit Dental S.V.
G-038 Rohde Technolgy Ltd. Gb.	F-038 MEDIOTEC	C-038 EQUUS S.p.A.	B-038 Dental H Tec	A-038 Medit Dental S.V.
G-039 Rohde Technolgy Ltd. Gb.	F-039 MEDIOTEC	C-039 EQUUS S.p.A.	B-039 Dental H Tec	A-039 Medit Dental S.V.
G-040 Rohde Technolgy Ltd. Gb.	F-040 MEDIOTEC	C-040 EQUUS S.p.A.	B-040 Dental H Tec	A-040 Medit Dental S.V.
G-041 Rohde Technolgy Ltd. Gb.	F-041 MEDIOTEC	C-041 EQUUS S.p.A.	B-041 Dental H Tec	A-041 Medit Dental S.V.
G-042 Rohde Technolgy Ltd. Gb.	F-042 MEDIOTEC	C-042 EQUUS S.p.A.	B-042 Dental H Tec	A-042 Medit Dental S.V.
G-043 Rohde Technolgy Ltd. Gb.	F-043 MEDIOTEC	C-043 EQUUS S.p.A.	B-043 Dental H Tec	A-043 Medit Dental S.V.
G-044 Rohde Technolgy Ltd. Gb.	F-044 MEDIOTEC	C-044 EQUUS S.p.A.	B-044 Dental H Tec	A-044 Medit Dental S.V.
G-045 Rohde Technolgy Ltd. Gb.	F-045 MEDIOTEC	C-045 EQUUS S.p.A.	B-045 Dental H Tec	A-045 Medit Dental S.V.
G-046 Rohde Technolgy Ltd. Gb.	F-046 MEDIOTEC	C-046 EQUUS S.p.A.	B-046 Dental H Tec	A-046 Medit Dental S.V.
G-047 Rohde Technolgy Ltd. Gb.	F-047 MEDIOTEC	C-047 EQUUS S.p.A.	B-047 Dental H Tec	A-047 Medit Dental S.V.
G-048 Rohde Technolgy Ltd. Gb.	F-048 MEDIOTEC	C-048 EQUUS S.p.A.	B-048 Dental H Tec	A-048 Medit Dental S.V.
G-049 Rohde Technolgy Ltd. Gb.	F-049 MEDIOTEC	C-049 EQUUS S.p.A.	B-049 Dental H Tec	A-049 Medit Dental S.V.
G-050 Rohde Technolgy Ltd. Gb.	F-050 MEDIOTEC	C-050 EQUUS S.p.A.	B-050 Dental H Tec	A-050 Medit Dental S.V.
G-051 Rohde Technolgy Ltd. Gb.	F-051 MEDIOTEC	C-051 EQUUS S.p.A.	B-051 Dental H Tec	A-051 Medit Dental S.V.
G-052 Rohde Technolgy Ltd. Gb.	F-052 MEDIOTEC	C-052 EQUUS S.p.A.	B-052 Dental H Tec	A-052 Medit Dental S.V.
G-053 Rohde Technolgy Ltd. Gb.	F-053 MEDIOTEC	C-053 EQUUS S.p.A.	B-053 Dental H Tec	A-053 Medit Dental S.V.
G-054 Rohde Technolgy Ltd. Gb.	F-054 MEDIOTEC	C-054 EQUUS S.p.A.	B-054 Dental H Tec	A-054 Medit Dental S.V.
G-055 Rohde Technolgy Ltd. Gb.	F-055 MEDIOTEC	C-055 EQUUS S.p.A.	B-055 Dental H Tec	A-055 Medit Dental S.V.
G-056 Rohde Technolgy Ltd. Gb.	F-056 MEDIOTEC	C-056 EQUUS S.p.A.	B-056 Dental H Tec	A-056 Medit Dental S.V.
G-057 Rohde Technolgy Ltd. Gb.	F-057 MEDIOTEC	C-057 EQUUS S.p.A.	B-057 Dental H Tec	A-057 Medit Dental S.V.
G-058 Rohde Technolgy Ltd. Gb.	F-058 MEDIOTEC	C-058 EQUUS S.p.A.	B-058 Dental H Tec	A-058 Medit Dental S.V.
G-059 Rohde Technolgy Ltd. Gb.	F-059 MEDIOTEC	C-059 EQUUS S.p.A.	B-059 Dental H Tec	A-059 Medit Dental S.V.
G-060 Rohde Technolgy Ltd. Gb.	F-060 MEDIOTEC	C-060 EQUUS S.p.A.	B-060 Dental H Tec	A-060 Medit Dental S.V.
G-061 Rohde Technolgy Ltd. Gb.	F-061 MEDIOTEC	C-061 EQUUS S.p.A.	B-061 Dental H Tec	A-061 Medit Dental S.V.
G-062 Rohde Technolgy Ltd. Gb.	F-062 MEDIOTEC	C-062 EQUUS S.p.A.	B-062 Dental H Tec	A-062 Medit Dental S.V.
G-063 Rohde Technolgy Ltd. Gb.	F-063 MEDIOTEC	C-063 EQUUS S.p.A.	B-063 Dental H Tec	A-063 Medit Dental S.V.
G-064 Rohde Technolgy Ltd. Gb.	F-064 MEDIOTEC	C-064 EQUUS S.p.A.	B-064 Dental H Tec	A-064 Medit Dental S.V.
G-065 Rohde Technolgy Ltd. Gb.	F-065 MEDIOTEC	C-065 EQUUS S.p.A.	B-065 Dental H Tec	A-065 Medit Dental S.V.
G-066 Rohde Technolgy Ltd. Gb.	F-066 MEDIOTEC	C-066 EQUUS S.p.A.	B-066 Dental H Tec	A-066 Medit Dental S.V.
G-067 Rohde Technolgy Ltd. Gb.	F-067 MEDIOTEC	C-067 EQUUS S.p.A.	B-067 Dental H Tec	A-067 Medit Dental S.V.
G-068 Rohde Technolgy Ltd. Gb.	F-068 MEDIOTEC	C-068 EQUUS S.p.A.	B-068 Dental H Tec	A-068 Medit Dental S.V.
G-069 Rohde Technolgy Ltd. Gb.	F-069 MEDIOTEC	C-069 EQUUS S.p.A.	B-069 Dental H Tec	A-069 Medit Dental S.V.
G-070 Rohde Technolgy Ltd. Gb.	F-070 MEDIOTEC	C-070 EQUUS S.p.A.	B-070 Dental H Tec	A-070 Medit Dental S.V.
G-071 Rohde Technolgy Ltd. Gb.	F-071 MEDIOTEC	C-071 EQUUS S.p.A.	B-071 Dental H Tec	A-071 Medit Dental S.V.
G-072 Rohde Technolgy Ltd. Gb.	F-072 MEDIOTEC	C-072 EQUUS S.p.A.	B-072 Dental H Tec	A-072 Medit Dental S.V.
G-073 Rohde Technolgy Ltd. Gb.	F-073 MEDIOTEC	C-073 EQUUS S.p.A.	B-073 Dental H Tec	A-073 Medit Dental S.V.
G-074 Rohde Technolgy Ltd. Gb.	F-074 MEDIOTEC	C-074 EQUUS S.p.A.	B-074 Dental H Tec	A-074 Medit Dental S.V.
G-075 Rohde Technolgy Ltd. Gb.	F-075 MEDIOTEC	C-075 EQUUS S.p.A.	B-075 Dental H Tec	A-075 Medit Dental S.V.
G-076 Rohde Technolgy Ltd. Gb.	F-076 MEDIOTEC	C-076 EQUUS S.p.A.	B-076 Dental H Tec	A-076 Medit Dental S.V.
G-077 Rohde Technolgy Ltd. Gb.	F-077 MEDIOTEC	C-077 EQUUS S.p.A.	B-077 Dental H Tec	A-077 Medit Dental S.V.
G-078 Rohde Technolgy Ltd. Gb.	F-078 MEDIOTEC	C-078 EQUUS S.p.A.	B-078 Dental H Tec	A-078 Medit Dental S.V.
G-079 Rohde Technolgy Ltd. Gb.	F-079 MEDIOTEC	C-079 EQUUS S.p.A.	B-079 Dental H Tec	A-079 Medit Dental S.V.
G-080 Rohde Technolgy Ltd. Gb.	F-080 MEDIOTEC	C-080 EQUUS S.p.A.	B-080 Dental H Tec	A-080 Medit Dental S.V.
G-081 Rohde Technolgy Ltd. Gb.	F-081 MEDIOTEC	C-081 EQUUS S.p.A.	B-081 Dental H Tec	A-081 Medit Dental S.V.
G-082 Rohde Technolgy Ltd. Gb.	F-082 MEDIOTEC	C-082 EQUUS S.p.A.	B-082 Dental H Tec	A-082 Medit Dental S.V.
G-083 Rohde Technolgy Ltd. Gb.	F-083 MEDIOTEC	C-083 EQUUS S.p.A.	B-083 Dental H Tec	A-083 Medit Dental S.V.
G-084 Rohde Technolgy Ltd. Gb.	F-084 MEDIOTEC	C-084 EQUUS S.p.A.	B-084 Dental H Tec	A-084 Medit Dental S.V.
G-085 Rohde Technolgy Ltd. Gb.	F-085 MEDIOTEC	C-085 EQUUS S.p.A.	B-085 Dental H Tec	A-085 Medit Dental S.V.
G-086 Rohde Technolgy Ltd. Gb.	F-086 MEDIOTEC	C-086 EQUUS S.p.A.	B-086 Dental H Tec	A-086 Medit Dental S.V.
G-087 Rohde Technolgy Ltd. Gb.	F-087 MEDIOTEC	C-087 EQUUS S.p.A.	B-087 Dental H Tec	A-087 Medit Dental S.V.
G-088 Rohde Technolgy Ltd. Gb.	F-088 MEDIOTEC	C-088 EQUUS S.p.A.	B-088 Dental H Tec	A-088 Medit Dental S.V.
G-089 Rohde Technolgy Ltd. Gb.	F-089 MEDIOTEC	C-089 EQUUS S.p.A.	B-089 Dental H Tec	A-089 Medit Dental S.V.
G-090 Rohde Technolgy Ltd. Gb.	F-090 MEDIOTEC	C-090 EQUUS S.p.A.	B-090 Dental H Tec	A-090 Medit Dental S.V.
G-091 Rohde Technolgy Ltd. Gb.	F-091 MEDIOTEC	C-091 EQUUS S.p.A.	B-091 Dental H Tec	A-091 Medit Dental S.V.
G-092 Rohde Technolgy Ltd. Gb.	F-092 MEDIOTEC	C-092 EQUUS S.p.A.	B-092 Dental H Tec	A-092 Medit Dental S.V.
G-093 Rohde Technolgy Ltd. Gb.	F-093 MEDIOTEC	C-093 EQUUS S.p.A.	B-093 Dental H Tec	A-093 Medit Dental S.V.
G-094 Rohde Technolgy Ltd. Gb.	F-094 MEDIOTEC	C-094 EQUUS S.p.A.	B-094 Dental H Tec	A-094 Medit Dental S.V.
G-095 Rohde Technolgy Ltd. Gb.	F-095 MEDIOTEC	C-095 EQUUS S.p.A.	B-095 Dental H Tec	A-095 Medit Dental S.V.
G-096 Rohde Technolgy Ltd. Gb.	F-096 MEDIOTEC	C-096 EQUUS S.p.A.	B-096 Dental H Tec	A-096 Medit Dental S.V.
G-097 Rohde Technolgy Ltd. Gb.	F-097 MEDIOTEC	C-097 EQUUS S.p.A.	B-097 Dental H Tec	A-097 Medit Dental S.V.
G-098 Rohde Technolgy Ltd. Gb.	F-098 MEDIOTEC	C-098 EQUUS S.p.A.	B-098 Dental H Tec	A-098 Medit Dental S.V.
G-099 Rohde Technolgy Ltd. Gb.	F-099 MEDIOTEC	C-099 EQUUS S.p.A.	B-099 Dental H Tec	A-099 Medit Dental S.V.
G-100 Rohde Technolgy Ltd. Gb.	F-100 MEDIOTEC	C-100 EQUUS S.p.A.	B-100 Dental H Tec	A-100 Medit Dental S.V.

today Trend Index

- Implantologie
Implantology
- Prävention/Parodontologie
Prevention/Periodontology
- Veranstalter, Verbände & Depots
Organisers, Associations & Trade
- Endodontie/Kons
Endo/Conservative Dentistry
- Laserzahnheilkunde
Laser Dentistry
- Digitale Praxis
Digital Practice
- Kieferorthopädie
Orthodontics
- Kosmetische Zahnheilkunde
Cosmetic Dentistry
- Praxisrichtung
Interior Design
- Zahntechnik
Dental Technology
- Praxishygiene
Hygiene and Sterilisation
- Praxismanagement
Practice Management



Praxishygiene
Hygiene and Sterilisation
Praxismanagement
Practice Management

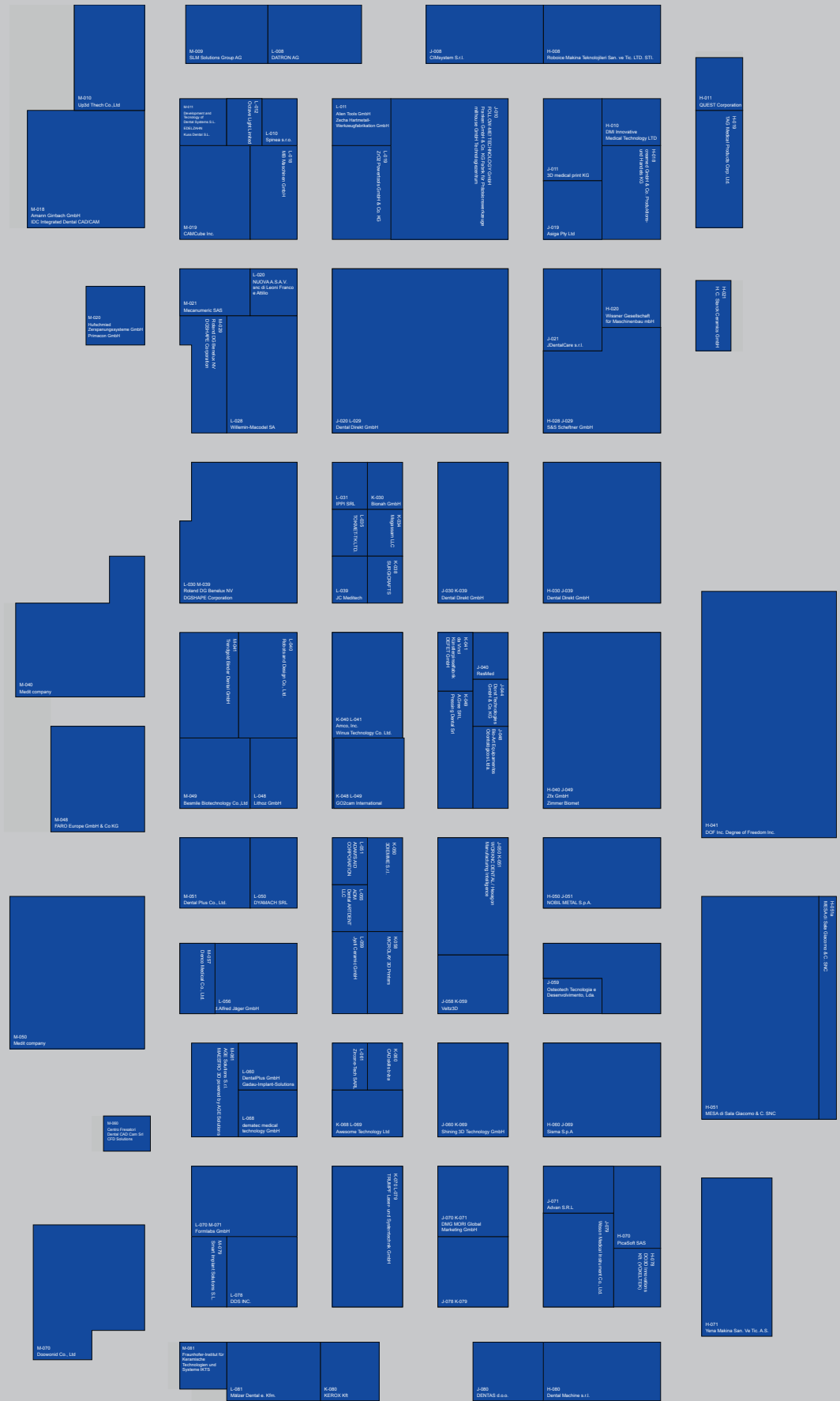
Praxisentwicklung
Interior Design
Zahntechnik
Dental Technology

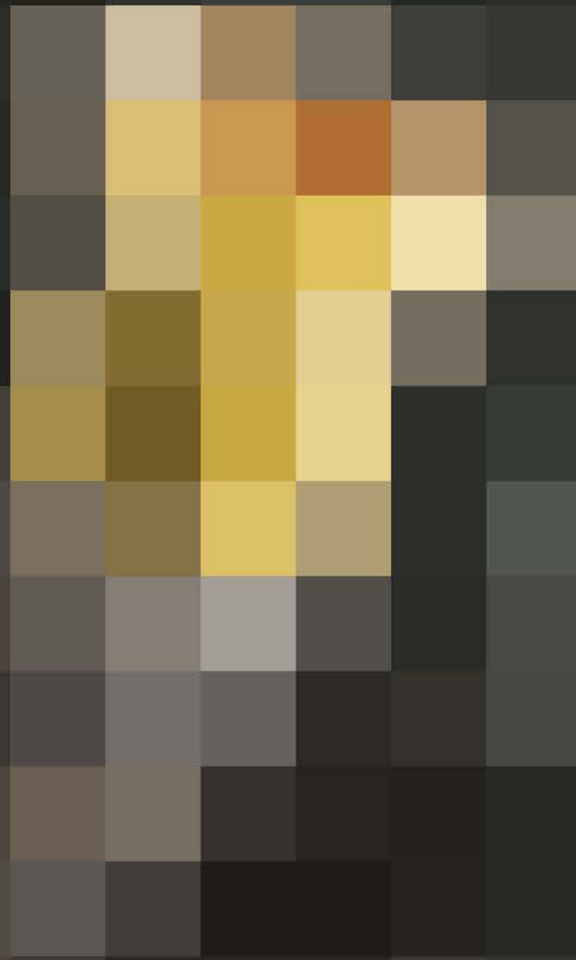
Laserzahnkunde
Laser Dentistry
Digitale Praxis
Digital Practice

Kieferorthopädie
Orthodontics
Kosmetische Zahnkunde
Cosmetic Dentistry

Veranstalter, Verbände & Depots
Organisers, Associations & Trade
Endodontie/Kons
Endo/Conservative Dentistry

Implantologie
Implantology
Prävention/Periodontologie
Prevention/Periodontology





COMING SOON

to be announced on 12 March



Praxishygiene
Hygiene and Sterilisation
Praxismanagement
Practice Management

Praxisentwicklung
Interior Design
Zahntechnik
Dental Technology

Laserzahnkunde
Laser Dentistry
Digitale Praxis
Digital Practice

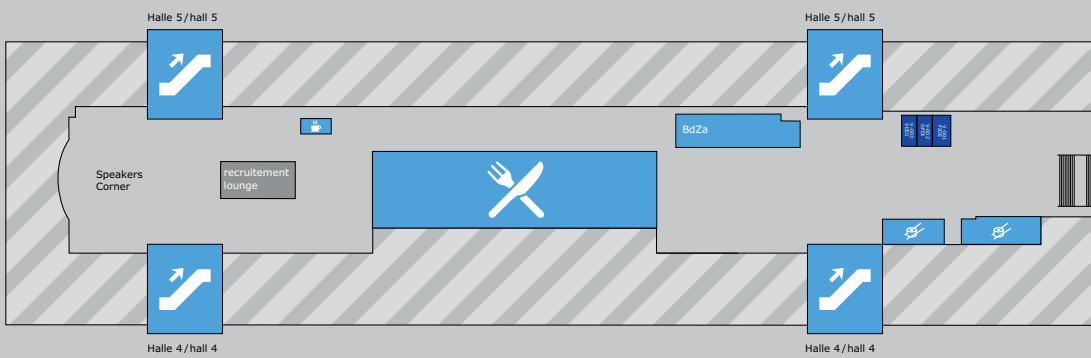
Kieferorthopädie
Orthodontics
Kosmetische Zahnkunde
Cosmetic Dentistry

Veranstalter, Verbände & Depots
Organisers, Associations & Trade
Endodontie/Kons
Endo/Conservative Dentistry

Implantologie
Implantology
Prävention/Periodontologie
Prevention/Periodontology

G-010 Robert Precision Dental Instruments Co. Ltd.	G-014 Ingenieur-Assistent DIN GmbH	G-018 PPM SRL (Fast Protos)	G-028 Vestris Dental Industry s.r.l.	G-040 Chromat Dentaltechnologie gesellschaft mbH	G-044 Present Italia S.r.l.	G-050 LASKM Ltd.	G-060 Convergim Dental, Inc.	G-068 Futurist Dental Inventor Co. Ltd. GSA/OLZ Corp.	G-070 Trendmax S.p.A.	F-008 SANCTUARY HEALTH SON. BHD.	F-010 G-011 Teh. Med. Ser. in TC. A.S.	F-011 Dre. Chena Co.	F-019 Borut Co., Ltd.	F-020 Misa Steam Metal Sp. Zool.	F-022 FAKTERIA H	F-023 STADY SAS	F-028 G-029 PCTEC MFGANTS LTD	F-030 G-031 New 2002 EOOD	F-038 F-039 ESSEAME Components s.r.l. Vogel S.r.l.	F-041 Lilichart Sdn Bhd.	F-045 Ortho Scan Sdn. Bhd.	F-050 G-051 Raydent International Inc.	F-055 MROCKET Ltd. Research and Production Company	F-059 Team Concept	F-065 Kawachi AB	F-068 Multiplus Sdn Bhd	F-070 G-079 MEDSON CO., LTD.	F-080 Praxisonline Italia S.p.A.	F-081 Santini Dental Co., Ltd.	F-082 Wolyfo Inc.	D-001 MEDICLUS Co., Ltd.	D-002 Shin Shun Co., Ltd.	D-003 Alisa Co.	D-004 PO Dental	D-001 HDI Inc.	E-005 Beyony Pty Ltd	E-008 Gangneung Linsen Medical Device Technology Co., Ltd.	E-009 Kc Medical (Ukraine) San. W. Tr. Ltd. Sr.	E-010 Lecora S.A.	E-011 VINETTI SA	E-018 Biolone Tech Co., Ltd.	E-019 Bioscience Technology Co., Ltd.	E-020 Shinjo Junsaid Medical Co., Ltd.	E-025 Beyony Pty Ltd	E-028 F-029 ESSEAME Components s.r.l. Vogel S.r.l.	E-031 ALBA-DENTAL GmbH	E-038 F-039 ESSEAME Components s.r.l. Vogel S.r.l.	E-041 Lilichart Sdn Bhd.	E-045 Ortho Scan Sdn. Bhd.	E-050 MROCKET Ltd. Research and Production Company	E-055 Jinphat S.A.	E-060 Multiplus Sdn Bhd	E-065 Kawachi AB	E-068 Multiplus Sdn Bhd	E-071 Hassan, Inc.	E-078 Pia Tech. Instruments	E-079 ONE Co., Ltd.	E-080 Sandimada	E-081 Shin Shun Dental Co., Ltd.	E-082 Wolyfo Inc.	C-008 Dentistry Simina	C-009 Dentistry Simina	C-010 Dentistry Simina	C-019 GOLDENT Hungary Ltd.	C-021 Spectra XPS Design Group GmbH	C-028 Dentim - PerfFactory GmbH Pavlovic Dental Products	C-031 Spectra XPS Design Group GmbH	C-038 Dentim - PerfFactory GmbH Pavlovic Dental Products	C-039 Eberbacher Dentservier ED GmbH	C-041 NEB MACHINERY (PVT) LTD	C-048 SIBED s.r.l.	C-051 Rayent Co., Ltd.	C-052 SINJUNG DENTAL CO. LTD	C-055 MOVED Co.	C-058 Jinphat Co., Ltd.	C-061 Jinphat Co., Ltd.	C-062 SINJUNG DENTAL CO. LTD	C-065 MOVED Co.	C-068 Jinphat Co., Ltd.	C-071 MCTEBO	C-078 Boson Dental Co., Ltd.	C-081 HDI Inc.	C-091 Trendmax S.p.A.	A-008 Trendmax S.p.A.	A-009 GOLDENT Hungary Ltd.	A-010 CORTEX Dental Implants Industries Ltd.	A-021 Dentim - PerfFactory GmbH Pavlovic Dental Products	A-028 Dentim - PerfFactory GmbH Pavlovic Dental Products	A-031 Eberbacher Dentservier ED GmbH	A-038 Dentim - PerfFactory GmbH Pavlovic Dental Products	A-039 Eberbacher Dentservier ED GmbH	A-041 BOFTECH DENTAL Center Technologies NV Zhejiang Corporation (S.S.) Zhang	A-051 BOFTECH DENTAL Center Technologies NV Zhejiang Corporation (S.S.) Zhang	A-058 Good Doctors Co., Ltd.	A-061 Jinphat Co., Ltd.	A-062 KAWACHI AB	A-065 Dentical Inc.	A-068 Suljung Dental	A-071 KAWACHI AB	A-078 Boson Dental Co., Ltd.	A-081 HDI Inc.	A-088 KAWACHI AB	A-091 HDI Inc.	A-098 KAWACHI AB	A-101 KAWACHI AB	A-108 KAWACHI AB	A-111 Vericon Co., Ltd.	A-118 Dentistry Technology GmbH
--	--	--------------------------------	--	---	--------------------------------	---------------------	---------------------------------	--	--------------------------	-------------------------------------	---	-------------------------	--------------------------	--	---------------------	--------------------	----------------------------------	------------------------------	--	--------------------------------	----------------------------------	---	--	-----------------------	---------------------	----------------------------	---------------------------------	--	-----------------------------------	----------------------	-----------------------------	---------------------------------	--------------------	--------------------	-------------------	-------------------------	--	---	----------------------	---------------------	---------------------------------	--	---	-------------------------	---	---------------------------	--	--------------------------------	----------------------------------	--	-----------------------	----------------------------	---------------------	----------------------------	-----------------------	-----------------------------------	------------------------	--------------------	--	----------------------	---------------------------	---------------------------	---------------------------	-------------------------------	---	--	---	--	---	-------------------------------------	-----------------------	---------------------------	------------------------------------	--------------------	----------------------------	----------------------------	------------------------------------	--------------------	----------------------------	-----------------	------------------------------------	-------------------	--------------------------	--------------------------	-------------------------------	---	--	--	---	--	---	---	---	---------------------------------	----------------------------	---------------------	------------------------	-------------------------	---------------------	------------------------------------	-------------------	---------------------	-------------------	---------------------	---------------------	---------------------	----------------------------	---------------------------------------

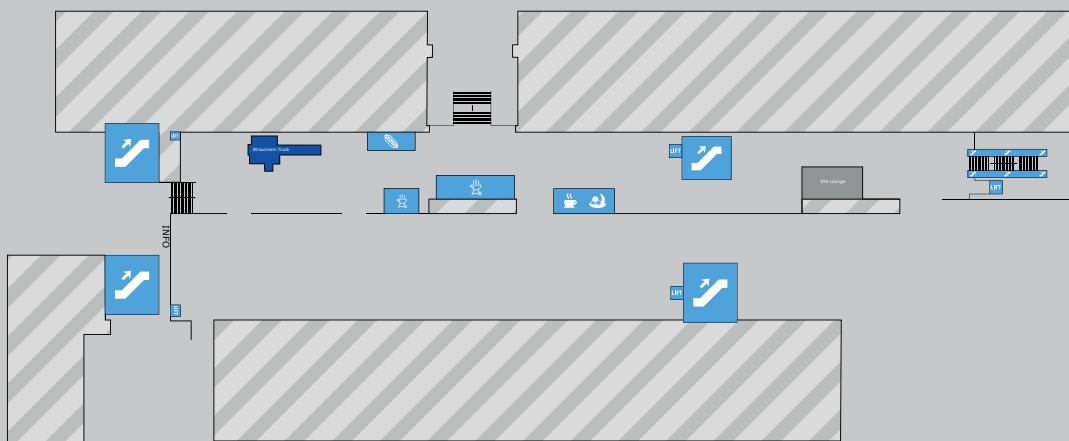
Passage 4/5



today

- Implantologie
Implantology
- Prävention/Parodontologie
Prevention/Periodontology
- Veranstalter, Verbände & Depots
Organisers, Associations & Trade
- Endodontie/Kons
Endo/Conservative Dentistry
- Kieferorthopädie
Orthodontics
- Kosmetische Zahnheilkunde
Cosmetic Dentistry
- Laserzahnheilkunde
Laser Dentistry
- Digitale Praxis
Digital Practice
- Praxiseinrichtung
Interior Design
- Zahntechnik
Dental Technology
- Praxishygiene
Hygiene and Sterilisation
- Praxismanagement
Practice Management

Boulevard Nord



AD

INTRODUCING THE LATEST ADVANCEMENTS IN BIOACTIVE MATERIALS

The NEW Predicta™ Bioactive products are the latest examples of new cutting-edge restorative materials from Parkell; a US-based Manufacturer with over 70 years of excellence in dental material manufacturing. Predicta™ Bioactive Bulk and Predicta™ Bioactive Core are dual cure, resin composites, that release fluoride, calcium and phosphate ions to stimulate mineral apatite formation and remineralization at the material-tooth interface. Predicta Bioactive materials deliver a unique combination of physical and chemical properties. They are dimensionally stable, with excellent strength, time-efficient handling, and optical characteristics close to those of natural teeth.

NEW!



Predicta™ Bioactive Bulk

- Clinical Versatility: Indicated for Class I, II, III, IV, and V restorations.
- Unlimited depth of cure without any need for layering.
- Ideal thixotropic viscosity for easy cavity adaptation.
- Nano-filled for durability and optimized polishability for life-like aesthetic outcomes.

Predicta™ Bioactive Core

- Contains Zirconia for enhanced cuttability.
- Versatile non-slumping formulation ideal for post cementation and core build-up.
- High flexural strength for strong, stable cores that last and resist flexing.
- Highly radiopaque for easy identification.

Mineral Apatite Formation

SEM Analysis of Predicta™ Restorative Surface after 28 Days.



Left: Predicta Control, no SBF. Center: Predicta, 7 days in SBF. Right: Predicta, 28 days in SBF. SEM images courtesy of Håkan Engqvist, Uppsala University, Sweden.

To learn more, visit Parkell at the DirectaDentalGroup Stand. Hall: 11.3 Stand K040-L049

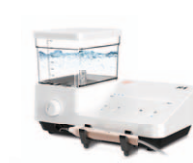
WHAT HAVE WE DONE IN THE PAST 30 YEARS?

One of **The Best in Global Ultrasonic Scaler Sales**
 One of **The Best in Global Piezo Surgery Sales**
 One of **The Best in Global Curing Light Sales**

Perio Series



Periodontal Treatment Device PT 3



Periodontal Treatment Device PT 5



Ultrasonic + Air PT-A

Surgery Series



Piezo Surgery Surgery-X



Implant Motor Planter



Laser LX16

Ultrasonic Scaler



Ultrasonic Scaler D600



Ultrasonic Scaler U600



Ultrasonic Scaler S6



Ultrasonic Scaler U6

Endo Series



Endo Motor Endo Radar



Apex Locator WOODPEX III Plus



Obturation System Fi-P Fi-G



Activator Endo 1

Restoration Series



Curing light B-Cure



Curing light X-Cure



Curing light iLed



Curing light O-Light



High-Speed Handpiece HP33

We are Woodpecker We are creating future

400+ employees, 100+ R&D engineers

We have applied for 364 patents, among which 78 invention patents

Existing 67,518m² plant, 100,510m² plant under construction

Invest 29.85 million dollars to establish CNC Centers

Invest 5.37 million dollars to establish Dental Professional Laboratory.

Our products are exported to 137 countries and areas.

Automated machines, standardized production.



Woodpecker factory



EMC Tester system



Advanced processing equipment in dental industry

Import processing and testing machine from Germany, Swiss and Japan. Each of the core components of Woodpecker products were produced by the machines that costs more than half million dollars.



1st Brushless

ENDO MOTOR

by Woodpecker

Super mini head & Slim neck
 Stronger power
 Precise rotation
 Lower noise
 Balanced Weight

