

IMPLANT TRIBUNE

The World's Dental Implant Newspaper · U.S. Edition

MAY 2010

www.implant-tribune.com

VOL. 5, No. 5



ICOI Spring Symposium
Companies brought new products to New Orleans event

▶Page 2B



New implant technology
Materialise adds Universal SurgiGuide drill-key options

▶Page 6B



Industry advances
OCO Biomedical releases 2.2 and 2.5 mm I-Micro implant

▶Page 13B

AAP calls on CDC to assess periodontal health in U.S.

The American Academy of Periodontology (AAP) was recently invited to provide testimony to the Centers for Disease Control and Prevention's Division of Oral Health (CDC DOH) as part of the strategic planning process for 2011 through 2014. The submission of this testimony is an extension of the longstanding collaboration between the AAP and the CDC to develop a surveillance program to determine the incidence and prevalence of periodontal disease in the U.S. population. Results of a pre-pilot of the surveillance program indicate that the incidence of periodontal disease may be two to three times higher than previous estimates.



(Photo/stock.xchng)

The AAP's testimony called for the CDC to prioritize resources to analyze and validate the results of the 2009-2010 National Health and Nutritional Examination Survey (NHANES), which includes self-report questions on periodontal health as well as a complete periodontal examination. This recommended analysis is vital in establishing a baseline measure of the periodontal health status of the U.S. population, especially in light of the growing body of research that links periodontal disease to other disease states, such as cardiovascular disease and diabetes.

The AAP testimony also recommends that the AAP and CDC, along with other stakeholder organizations, partner to promote public awareness of periodontal disease prevalence in the United States, and raise awareness of the importance of periodontal health in achieving overall health.

According to Samuel Low, DDS, MS, associate dean and professor of periodontology at the University of

→ [page 6B](#)

Restorative-driven implant dentistry: the future is now

By Ronald W. Konig, DDS, FAGD, LVIF

The science of implantology has continued to evolve through the years and is one of the fastest-growing segments in our profession. The focus of implantology seems to have emerged from simply getting the implant in the bone to proper placement with bone grafts and, finally, to creating excellent long esthetics and function.

In other words, the days are gone when we try to place the implant and then make the esthetics and function work.

This article reviews a case in which a central incisor is extracted and an immediate implant is placed followed by an immediate temporary crown on the implant. The patient presented with a high smile line that displays the entire tooth when smiling, thereby creating the challenge.

Case prep

An iCAT scan was taken to evaluate the bone around the tooth prior to extraction and implant placement. From the diagnostic casts a stint was made to use for the provisional restoration.

Great care must be taken when extracting the tooth so that tissue architecture and interproximal papilla is preserved (Fig. 1).

An Astra Implant, 4.0 X 13 mm, was used in this case. After placement, a temporary abutment was placed and prepped outside of the mouth to the gingival margin. Luxa-temp provisional material was used to fabricate the temporary crown.

The temporary crown was taken out of occlusion and the interproximal contacts were slightly opened. The crown was carefully polished so that no tissue irritation would occur (Fig. 2). This photo was taken immediately after the surgery and



Fig. 1: Immediate implant placement. (Photos/Provided by Dr. Ronald Konig)

temporary placement.

After three months of integration, the temporary was removed and a fixture level impression taken, so an

Atlantis Custom Anatomical Zirconium abutment could be fabricated. The

→ [page 4B](#)

AD

AUXILIARIES: Are you implant certified?

Patient Questions... Insurance Coverage... Tracking...
Operatory Set Up... Radiographic Protocol...
Assessment Parameters... Hygiene Instrumentation...
Communications with the Lab...

Implant Training Makes all the Difference!

Dental Hygiene Implant Certification Program® (DHICP) • Practice Management Implant Certification Program® (PMICP)
Dental Assisting Implant Certification Program® (DAICP) • Implant Coordinator Training Programs

The ADIA presents these comprehensive courses at many venues throughout the year.

ADIA ICOI

To find out more about these exciting programs and about membership in the ADIA visit our website:
www.adiaonline.org

Scenes from the ICOI

New technology was on tap at the Spring Symposium in New Orleans

For two decades, *Impladent Ltd.* has been recognized as a leader in the innovation and development of synthetic resorbable bone grafts, osteocompressive immediate-load dental implants, and surgical armamentarium.



Astra Tech develops, manufactures, markets dental implants and advanced disposable products for use within health-care. The company develops products that enhance treatment results, simplify work for dental professionals and help cut healthcare costs.



MIS designs, develops, manufactures and markets an advanced comprehensive range of dental implants and superstructures. *MIS'* world-class scientists and engineers are committed to continuous research and development of new and progressive products and technologies for the global dental implantation field.



Implant Direct provides customer service support 24/7 with online ordering and information about compatible products, as well as computer graphic animations to answer the more common surgical, prosthetic and laboratory questions. *Implant Direct* also offers the industry's first online, patient specific charting program for treatment planning, ordering, inventory control and team communications. For more, see www.implantdirect.com.



Keystone Dental's mission is to provide innovative, safe, efficacious and cost-effective solutions for tooth replacement therapy, with patient care as our first goal and ultimate responsibility.

*(Photos/
Humberto Estrada
of Implant Tribune)*

IMPLANT TRIBUNE

The World's Newspaper of Implantology - U.S. Edition

Publisher & Chairman
Torsten Oemus
t.oemus@dental-tribune.com

Vice President Global Sales
Peter Witteczek
p.witteczek@dental-tribune.com

Chief Operating Officer
Eric Seid
e.seid@dental-tribune.com

Group Editor & Designer
Robin Goodman
r.goodman@dental-tribune.com

Editor in Chief
Sascha A. Jovanovic, DDS, MS
sascha@jovanoviconline.com

**Managing Editor/Designer
Implant & Endo Tribunes**
Sierra Rendon
s.rendon@dental-tribune.com

**Managing Editor/Designer
Ortho Tribune & Show Dailies**
Kristine Colker
k.colker@dental-tribune.com

Online Editor
Fred Michmershuizen
f.michmershuizen@dental-tribune.com

Account Manager
Humberto Estrada
h.estrada@dental-tribune.com

Marketing Manager
Anna Wlodarczyk
a.wlodarczyk@dental-tribune.com

Marketing & Sales Assistant
Lorrie Young
l.young@dental-tribune.com

C.E. Manager
Julia Wehkamp
j.wehkamp@dental-tribune.com

Dental Tribune America, LLC
213 West 35th Street, Suite 801
New York, NY 10001
Phone: (212) 244-7181, Fax: (212) 244-7185



Published by
Dental Tribune America

© 2010, Dental Tribune America, LLC.
All rights reserved.

Dental Tribune makes every effort to report clinical information and manufacturer's product news accurately, but cannot assume responsibility for the validity of product claims, or for typographical errors. The publishers also do not assume responsibility for product names or claims, or statements made by advertisers. Opinions expressed by authors are their own and may not reflect those of Dental Tribune International.

Editorial Advisory Board

Dr. Sascha Jovanovic, Editor in Chief

Dr. Bernard Touati

Dr. Jack T. Krauser

Dr. Andre Saadoun

Dr. Gary Henkel

Dr. Doug Deporter

Dr. Michael Norton

Dr. Ken Serota

Dr. Axel Zoellner

Dr. Glen Liddelow

Dr. Marius Steigmann

**Tell us
what
you
think!**

Do you have general comments or criticism you would like to share? Is there a particular topic you would like to see more articles about? Let us know by e-mailing us at feedback@dental-tribune.com. If you would like to make any change to your subscription (name, address or to opt out) please send us an e-mail at database@dental-tribune.com and be sure to include which publication you are referring to. Also, please note that subscription changes can take up to 6 weeks to process.

IT Corrections

Implant Tribune strives to maintain the utmost accuracy in its news and clinical reports. If you find a factual error or content that requires clarification, please report the details to Managing Editor Sierra Rendon at s.rendon@dental-tribune.com.

The RIGHT CHOICE

For Resorbable Collagen

LIMITED TIME OFFER!

BUY 5 GET 1 FREE*

Buy ANY 5 Boxes of ACE Collagen Tape, Foam or Plugs and Get 1 More Box For FREE*

Offer good through June 2010.



Resorbable Collagen TAPE

RESORBABLE COLLAGEN TAPE

- Ideal for applications in minor oral wounds
- Aids in the repair of the Schneiderian Membrane
- Controls bleeding due to the hemostatic properties of collagen fiber
- Protects the oral wound bed
- 2.5cm x 7.5cm, 1mm thick

509-1000 Sterile 10/box \$158.00



Resorbable Collagen FOAM

RESORBABLE COLLAGEN FOAM

- Provides an excellent matrix to assist in wound healing
- Fully absorbable
- Establishes a matrix for tissue ingrowth
- Protects the oral wound bed
- 2cm x 4cm, 3mm thick

509-2000 Sterile 10/box \$115.00



Resorbable Collagen PLUG

RESORBABLE COLLAGEN PLUG

- Fully absorbable
- Ideal for applications in minor oral wounds
- Ideal for extraction sockets
- Controls bleeding due to the intrinsic hemostatic properties of collagen fiber
- 1cm x 2cm

509-4000 Sterile 10/box \$104.00

*Mix and match, lowest priced box is FREE. All items must be on the same order.

Offer expires June 30, 2010. Call 1.800.441.3100 or order online @ www.acesurgical.com

800.441.3100

www.acesurgical.com

ACE Surgical Supply Company, Inc. • 1034 Pearl Street, Brockton, MA 02301

← **IT** page 1B

temporary abutment and crown were then placed back in the mouth.

The impressions were sent to our lab technician, who then poured the model with the implant lab analog in place and sent it to Atlantis with the correct prescription. In this case, a zirconium anatomical abutment was prescribed with the facial margin prescribed for 1 mm subgingival and the lingual margin .75 subgingival.

Atlantis then sent the case back to our lab technician, who made the case ready to fabricate the crown. Photographs to assist with shade selection were also enclosed with the case. An Empress crown was then fabricated and the case returned to my office.

The Atlantis Abutment was tried in (Fig. 3). Note the excellent tissue



Fig. 2: Immediate temporary placement.

contours and the width of the custom abutment (a discussion of custom abutments is below).

The crown was then placed and custom shaded. On most anterior cases, custom shading by painting the desired porcelain shades on the crown in the mouth and then re-firing the crown allows for subtle changes that can truly enhance the



Fig. 3: Custom abutment placement.

final outcome. After re-firing, the crown bonded into place.

Figure 4 exhibits the completed restoration at the time of cementation. Careful observation reveals an intact papilla, correct anatomic contours of the abutment, healthy and firm gingival tissues and an excellent shade, contour and glaze effect that blends with the natural dentition.



Fig. 4: Final crown restoration.

Discussion

• **Implant type:** There are distinct advantages to using bone level implants in the anterior area, especially with immediate extraction and placement cases. This allows for the use of custom abutments, which mimic the anatomy and shape of the natural tooth.

• **Abutments:** Many companies make custom abutments. Atlantis is an exceptional company that will work with your lab, and its work is outstanding. The company fabricates anatomical abutments to the correct shape and width of the tooth at the gingival margin. As indicated above, specifications to the placement of the margin enhances the health and esthetics of the crown. The use of custom abutments, such as Atlantis, is almost a “no-brainer” and the costs are similar to stock abutments of major implant companies.

• **Soft tissue:** Using the immediate extraction/implant placement/immediate provisionalization technique allows for the preservation of soft tissue and papilla architecture. Using a “plastic” temporary abutment that can be prepped allows for fabrication of a nicely contoured provisional crown that prevents the collapse and deterioration of these structures.

• **Esthetics:** The advent of custom zirconium abutments allows the use of all-ceramic crowns. Emax and Empress restorations are two systems that allow control of the translucency, glaze and custom shading.

Implant esthetics and use is on the rise as patients are more educated and savvy than in the past. This is an exciting time to be doing implants and restorative care. Patients like not using a flipper for the interim period. These techniques allow the dentist more predictable and successful restorative prosthetics. **IT**

AD

SimPlant[®] Crystal

Split-second sharpness

Sharp insights in the twinkling of an eye!

- Quick start your case planning with DentalPlanit[®] – 24/7 online collaboration with local imaging centers and other partners
- Obtain crystal clear images from CT and cone beam scanners

A must-have for your practice!

- Plan your case step by step, with ease and confidence
- Work with your preferred scanner and implant brands
- Communicate with your patients in a crystal clear way

3D Digital Dentistry
Allowing you to work in a more time and cost efficient environment

simple
compatible
unique

www.materialisedental.com

IT About the author

Ronald W. König, DDS, is a graduate of the University of Texas, Austin and Baylor College of Dentistry. He completed post-graduate training at LVI for advanced dental studies and is an alumnus at the LD Pankey Institute. He is a fellow at LVI for advance dental studies and a fellow of the Academy of General Dentistry; a member of The American Academy of Sleep Dentistry, The International College of Cranio-mandibular Orthopedics and The International Academy of Comprehensive Aesthetics. He maintains a private practice in the Houston Medical Center with special interests in TMJ, reconstructive and sleep dentistry.



AMD LASERS™

Effective. Practical. Affordable. World Class Lasers.

*The Fine Art of
Laser Dentistry*



BY AMD LASERS™, LLC
picasso
IS #1



“easy to use,
outstanding,
does it all,
quality dental laser.”

Arun K. Garg, D.M.D.
Center for Dental Implants
Adventura, Florida

BY AMD LASERS™, LLC
picasso
ST LITE

BY AMD LASERS™, LLC
picasso

2 Year
Warranty ▶ \$2,495

3 Year
Warranty ▶ \$4,995



“recognized leader,
superior
products
every dentist can afford.”

Larry Rosenthal, D.D.S.
Director Aesthetic Advantage
New York, NY



“impressive,
every dentist
should have one.”

Ross Nash, D.D.S.
Nash Institute
Charlotte, NC

#1 LASER
in the world

2.5 Watts
3 Custom Presets
Continuous/Pulse Modes
Universal Icon Menu

7.0 Watts
8 Custom Presets
Continuous/Pulse Modes
Multi-Lingual Menu

▶ *the only lasers to offer*
STRIPPABLE FIBERS OR DISPOSABLE TIPS

T7.ITBv5/5-2010



AMD LASERS™, LLC.
www.amdlasers.com

7405 Westfield Blvd.
Indianapolis, IN 46240, USA

866.WWW.AMDL
866.999.2635

TEL: 317.202.9530
FAX: 678.868.4108
sales@amdlasers.com

FDA CE
0197
ISO 13485

Materialise Dental triples its range of Universal SurgiGuide drill-key diameters



Materialise Dental has recently expanded its range of Universal SurgiGuide drill-key diameters to include 43 different ones. (Photo/Provided by Materialise Dental)

Due to the huge success of Universal SurgiGuide® since its launch one year ago, Materialise Dental has recently expanded its range of Universal SurgiGuide drill-key diameters to include up to 43 different ones — 16 “Regular Platform” drill diameters ranging from 2.0 to 3.5 mm, and 27 “Wide Platform” drill diameters ranging from 2.0 to 4.6 mm.


This expansion of available drill diameters allows for accurate guidance of an even wider range of drills, adding to the flexible nature of the Universal SurgiGuide system.

A Universal SurgiGuide can be used with any standard implant surgery kit and is ideal if the clinician’s implant company does not offer a guided surgery kit or if he or she works with various implant brands.

The Universal SurgiGuide system is compatible with all implant systems and provides for a flexible drill sequence thanks to a set of drill keys that is composed based on the clinician’s preferred drill sequence. Additionally, any angle and any position in the patient’s mouth can be reached thanks to a special Universal SurgiGuide handle.

Every implant case asks for a tailored approach. That is why Materialise Dental not only offers different SurgiGuide types of support (bone-, mucosa- and tooth-supported SurgiGuide drill guides), but also a variety of SurgiGuide solutions (SAFE, Universal and Pilot SurgiGuide®). Special SurgiGuide types, such as guides for zygomatic implants and bone reduction guides, are also available.

Regardless of which SurgiGuide type of support and solution is selected, there’s something for every case, and esthetic perfection can be realized in a remarkably more time- and cost-efficient environment.

Check out more about SurgiGuide’s many solutions at www.materialisedental.com. 

AD



NobelActive™

A new direction in implants.

Dual-function prosthetic connection.

Bone-condensing property.

Adjustable implant orientation for optimal final placement.



Built-in platform shifting.

High initial stability, even in compromised bone situations.

10 YEARS WITH TIUNITE® SURFACE
New data confirm long-term stability.

© Nobel Biocare Services AG, 2010. All rights reserved. Nobel Biocare, the Nobel Biocare logo and all other trademarks are either registered or pending trademarks of Nobel Biocare.

NobelActive equally satisfies surgical and restorative clinical goals. NobelActive thread design progressively condenses bone with each turn during insertion, which is designed to enhance initial stability. The sharp apex and cutting blades allow surgical clinicians to adjust implant orientation for optimal positioning of the prosthetic connection. Restorative clinicians benefit by a versatile and secure internal conical prosthetic connection with built-in platform shifting upon which they can produce excellent esthetic results. Based on customer feedback and market demands for NobelActive, the product assortment has been expanded – dental professionals will now enjoy even greater flexibility in prosthetic and implant selection. Nobel Biocare is the world leader in innovative and evidence-based dental solutions. For more information, contact a Nobel Biocare representative at 800 322 5001 or visit our website.


www.nobelbiocare.com

Nobel Biocare USA, LLC, 22715 Savi Ranch Parkway, Yorba Linda, CA 92887; Phone 714 282 4800; Toll free 800 993 8100; Tech. support 888 725 7100; Fax 714 282 9023

Nobel Biocare Canada, Inc. 9133 Leslie Street, Unit 100, Richmond Hill, ON L4B 4N1; Phone 905 762 3500; Toll free 800 939 9394; Fax 905 762 4243

Disclaimer: Some products may not be regulatory cleared/released for sale in all markets. Please contact the local Nobel Biocare sales office for current product assortment and availability.

←  page 1B

Florida College of Dentistry, and president of the American Academy of Periodontology: “Periodontal disease is a serious public health issue that may have a significant impact on the overall wellness of the U.S. population. Therefore, the AAP greatly appreciates the opportunity to provide this testimony to the CDC. We look forward to continued collaboration with the CDC Division of Oral Health to assess the prevalence of periodontal disease and, optimistically, to increase public awareness of the importance of healthy teeth and gums.” 

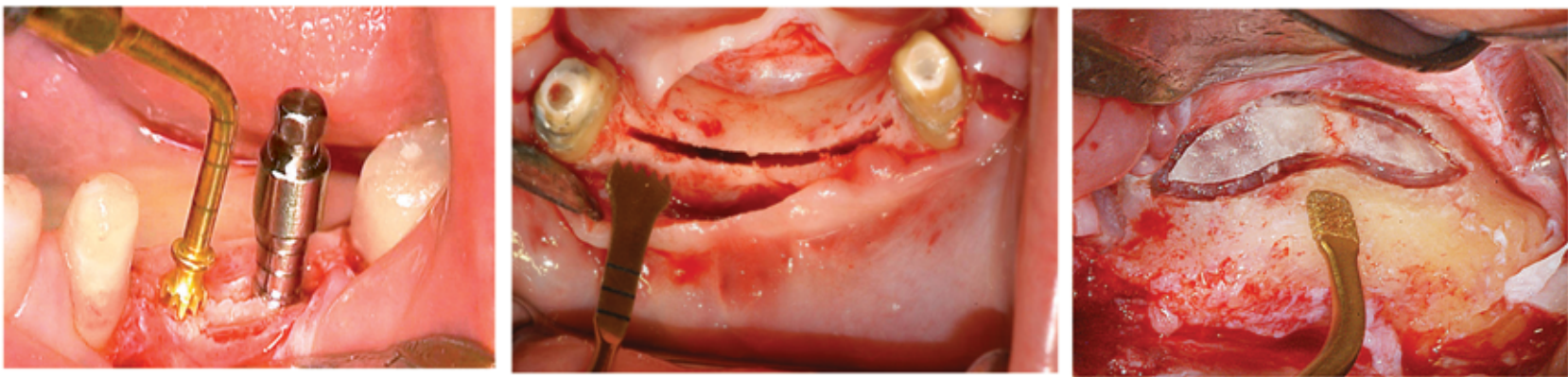
About the AAP

The American Academy of Periodontology (AAP) is the professional organization for periodontists — specialists in the prevention, diagnosis and treatment of diseases affecting the gums and supporting structures of the teeth, and in the placement of dental implants. Periodontists are also dentistry’s experts in the treatment of oral inflammation. They receive three additional years of specialized training following dental school, and periodontics is one of the nine dental specialties recognized by the American Dental Association. The AAP has 8,000 members worldwide.

A TECHNOLOGICAL ADVANCEMENT OVER TRADITIONAL SURGICAL TOOLS.

Specialty kits available for specific applications!

IMPLANT • SINUS LIFTS • RIDGE SPLITS • MORE!



**PIEZOSURGERY® is Trusted by
1,000's of Clinicians, Hospitals and
Universities Worldwide!**



"The incorporation of Piezosurgery® into both my private practice and Institute over the past four years has indeed resulted in a distinct paradigm shift with all of my bone grafting protocols. This exciting technology has afforded me the ability to fine tune and finesse all bone related surgery including donor and recipient site preparation for bone grafting and implant placement, as well as extraction site management and implant removal."

Michael A. Pikos, DDS

"I have been using Piezosurgery® in my OMS practice for 5 years. Piezosurgery® provides a new level of precision, efficiency and safety in surgical treatment. Complicated procedures including Sinus Grafting, Ridge Expansion and Nerve Repositioning can be performed with less stress and have an expanded role in my practice. The speed of the unit is impressive, reducing operative time and patient discomfort. I couldn't practice without it"

Dr. Dan Cullum - Implants Northwest, Coeur d'Alene, ID

See more Piezosurgery® testimonials at www.piezosurgery.us!

Need more information?

Call us: 1.888.877.4396 • Email: info@piezosurgery.us



Implant Direct™

simply smarter.

Taking Mini-Implants to a New Dimension

Application Specific Implants with All-in-One Packaging



Hands-On Surgical and Prosthetic Training with Dr. Gerald Niznick, President/Founder of Implant Direct

This course is for Dentists starting to place implants, those who want to expand treatment options beyond conventional mini-implants and for Implantologists or Surgical Specialists who want to minimize bone grafting and offer edentulous patients Teeth-In-1Day™ treatment.

1. Monthly, Los Angeles, CA
2. Sunday May 23rd, Newport Beach, CA
3. Saturday June 5th, Las Vegas, NV
4. Monday July 12th, Sacramento, CA
5. Tuesday July 13th, Portland, OR
6. Wednesday July 14th, Seattle, WA
7. Monday July 19th, Minneapolis, MN
8. Tuesday July 20th, Chicago, IL
9. Wednesday July 21st, Saint Louis, MO
10. Thursday July 22nd, Tulsa, OK
11. Monday August 9th, Knoxville, TN
12. Tuesday August 10th, Memphis, TN
13. Wednesday August 11th, Kansas City, MO
14. Thursday August 12th, Denver, CO
15. Monday August 23rd, Birmingham, AL
16. Tuesday August 24th, New Orleans, LA
17. Wednesday August 25th, Houston, TX
18. Thursday August 26th, Dallas, TX
19. Sunday October 17th, Philadelphia, PA
20. Tuesday October 19th, Brooklyn, NY
21. Saturday November 13th, Honolulu, HI
22. Wednesday December 1st, Cincinnati, OH
23. Thursday December 2nd, Columbus, OH



8 CE Credits for all attending: \$ 295.00
Approved PACE Program Provider FAGD/MAGD Credit
Approval does not imply acceptance by a state or provincial board of dentistry or AGD endorsement.
08/01/2009 to 07/31/2012

Register on-line at www.implantdirect.com

Narrow One- and Two-Piece Implants

3.0mmD
ScrewDirect



1-Piece Implant with Straight Abutment, Snap Transfer & Cap Included: \$150



3.2mmD
Legacy3



2-Piece Bone-Level Implant with Transfer, Abutment & Collar Included: \$175

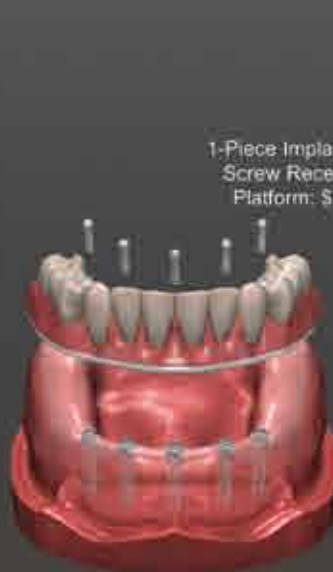


3.3mmD
SwissPlant



2-Piece Tissue-Level Implant with Transfer, Abutment & Collar Included: \$200

3.0mmD
ScrewIndirect



1-Piece Implant with Screw Receiving Platform: \$150

3.0mmD
GoDirect



1-Piece Implant: \$150



Monthly training dates at Implant Direct's Manufacturing Facility in Los Angeles, CA:
5/21, 6/25, 7/9, 8/20, 9/11, 10/8, 11/19, 12/17

Limited Attendance - Register Early
www.implantdirect.com
or call 1-888-NIZ-NICK/1-888-649-6425

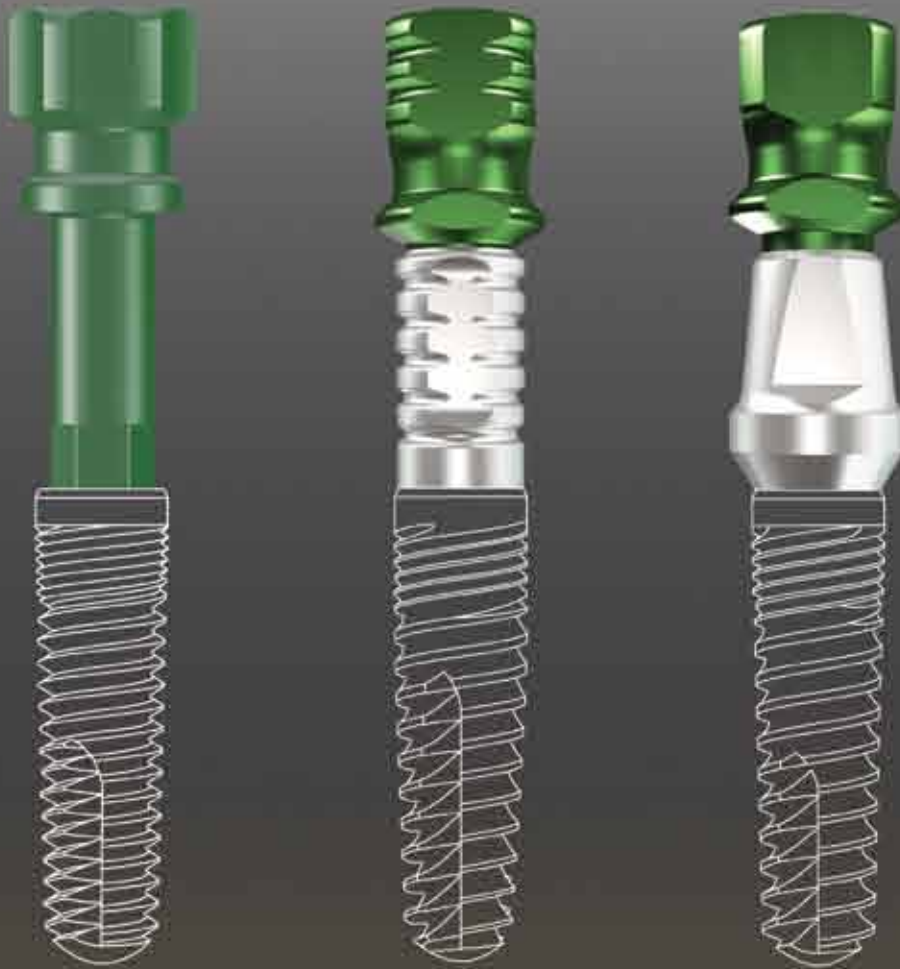
Internal Hex Implants with Original Conical Connection (Niznick US. Pat. # 4,960,381). Self-tapping for stability and Micro-threads for reduced bone loss. *SAVE 65-70% compared to Zimmer and BioHorizons.

Implant Direct Int'l
8840 W. Russell Road #210,
Las Vegas, NV 89148
Manufacturing/Sales: 1-818-444-3333
www.implantdirect.com

Three Implant Designs and Packaging Options
Implants include Cover Screw and Healing Collar
Select Implant based on Price, Packaging and Thread Design

Legacy1: \$125 Original "V" Thread with Plastic Carrier
Legacy2: \$150 includes Temporary Abutment/Transfer
Legacy3: \$175 includes Preparable Abutment/Transfer

Legacy1 Standard "V" Threads Matches Screw-Vent
Legacy2 Spiral Threads for Increased Stability
Legacy3 Buttress Threads for Increased Surface



Prosthetic compatibility with Screw-Vent, BioHorizons® and MIS Implants

Legacy™3 All-in-1 Packaging

INCLUDES: Cover Screw, Healing Collar, Transfer & Straight Preparable Abutment. Surgically and Prosthetically Compatible with Zimmer's Tapered Screw-Vent®

Legacy3 USA price = \$175

**Tapered Screw-Vent USA price = \$584

**Includes similar components provided with Legacy3 Implant.



INTRODUCTORY LEGACY OFFER

Try a 13mmL Legacy1, Legacy2 and Legacy3 Implant at no charge with purchase of required instruments

US List Price for 3-Implants, Abutments and Prosthetic Components

Legacy = \$620

Zimmer Dental = \$1797



Compare US List Price	Straight Contoured	HLA Abutment	15° Angled Contoured	Straight Snap-On	Gold/Plastic	Titanium Temporary Abutment	Plastic Temporary Abutment	Ball Attachment	Overdenture Attachment	Multiple-Unit w / Cap & Transfer Straight	Multiple-Unit w / Cap & Transfer Angled
Implant Direct	\$85	\$75	\$85	\$85	\$100	\$35	\$35	\$107	\$110	\$85	\$100
Zimmer Dental	\$158	\$152	\$179	\$203	\$180	\$45	\$52	\$168	\$110	\$167	N/A
Cost Savings	46%	51%	53%	58%	44%	22%	33%	36%	0%	49%	N/A

*US List prices as of 4/23/10

Screw-Vent® is a registered Trademark of Zimmer Dental

FREE Introductory Offers at
www.implantdirect.com
Terms and Conditions Apply