

DENTAL TRIBUNE

The World's Dental Newspaper · Middle East & Africa Edition

PUBLISHED IN DUBAI

www.dental-tribune.me

VOL. 12, No. 5

ENDO TRIBUNE

R-Motion: A Swiss-quality solution that redefines reciprocation

LAB TRIBUNE

Study finds 3D printing more accurate than milling when it comes to dental crowns

IMPLANT TRIBUNE

NUVO hosts two-day cadaver course in Turkey

ORTHO TRIBUNE

Orthobrain launches clear aligner system designed by orthodontists

HYGIENE TRIBUNE

Researchers develop customised 3D-printed toothbrush handle for patients with limited dexterity

► Insertion A

► Insertion B

► Insertion C

► Insertion D

► Insertion E

Learn, meet, engage in Dubai during the 36th International Dental Conference & Exhibition

By CAPP

For the first time since their inception, CAD/CAM & Digital Dentistry Conference & Exhibition (21st edition) and Dental Facial Cosmetic International Conference & Exhibition (14th edition) will be combined into one major international meeting.

To provide new opportunities for face-to-face exchange, the Centre for Advanced Professional Practices (CAPP) has established the "36th Int'l Dental ConfEx CAD/CAM Digital & Oral Facial Aesthetics". The two-day dental scientific

► Page 02



CAPP will host the "36th Int'l Dental ConfEx CAD/CAM Digital & Oral Facial Aesthetics" on 27-28 October 2023 in the Madinat Jumeirah Arena & Conference Centre, Dubai, UAE. (Image: Lukas Bischoff Photograph/Shutterstock)

AD

#whdentalwerk
f @ in v
video.wh.com

Now at
your dealer
or wh.com



The breakthrough in oral surgery

Piezo surgery for Implantmed - now as a simple add-on.

The new Piezomed module.

W&H presents the game changer in piezo surgery. As a simple add-on solution, the Piezomed module can now be used in conjunction with Implantmed Plus. W&H is breaking new ground in surgical applications. This ingenious modular system combines expertise from different areas.



piezomed
module

•Page 01

conference and exhibition will bring together dental professionals, the dental industry and top international speakers who will share their knowledge and expertise in one of the region's largest dentistry-focused educational conferences and exhibitions. The event is expected to attract over 5,000 dental professionals and will be held at Madinat Jumeirah Arena & Conference Centre in Dubai in the UAE on 27 and 28 October 2023.

The event will cater for general and specialist dental practitioners, as well as the entire dental team. The gathering will include a scientific conference, exhibition, multidisciplinary hands-on training courses, poster presentations and exhibition training zones. The scientific programme will include the sub-events:

- CAD/CAM & Digital Dentistry Conference & Exhibition
- Dental Facial Cosmetic International Conference & Exhibition

- Digital Orthodontics Symposium (DOS)
- Dental Hygienist Seminar (DHS)
- Dental Technician International Meeting (DTIM)

The conference and exhibition are aimed at giving dental professionals unrivalled opportunity to engage with their peers and meet with and discuss possibilities with industry representatives. There will be also a rich social pro-

gramme, which the organisers will announce soon.

Event attendees will be able to earn 14 continuing education credits. CAPP is an American Dental Association Continuing Education Recognition Program recognised provider.

CAPP is inviting all dental professionals and dental industry representatives to attend and is offering an early bird special registration

rate until 27 February 2023. Registration is now open at www.cappmea.com/confex.

AD

CAD/CAM Digital Oral Facial Aesthetics 36th Dental ConfEx

CAPP
Dubai
27-28 Oct
2023

SAVE THE DATE

MADINAT JUMEIRAH ARENA
& CONFERENCE CENTRE | DUBAI | UAE

EARLY BIRD
TICKETS
AVAILABLE
NOW

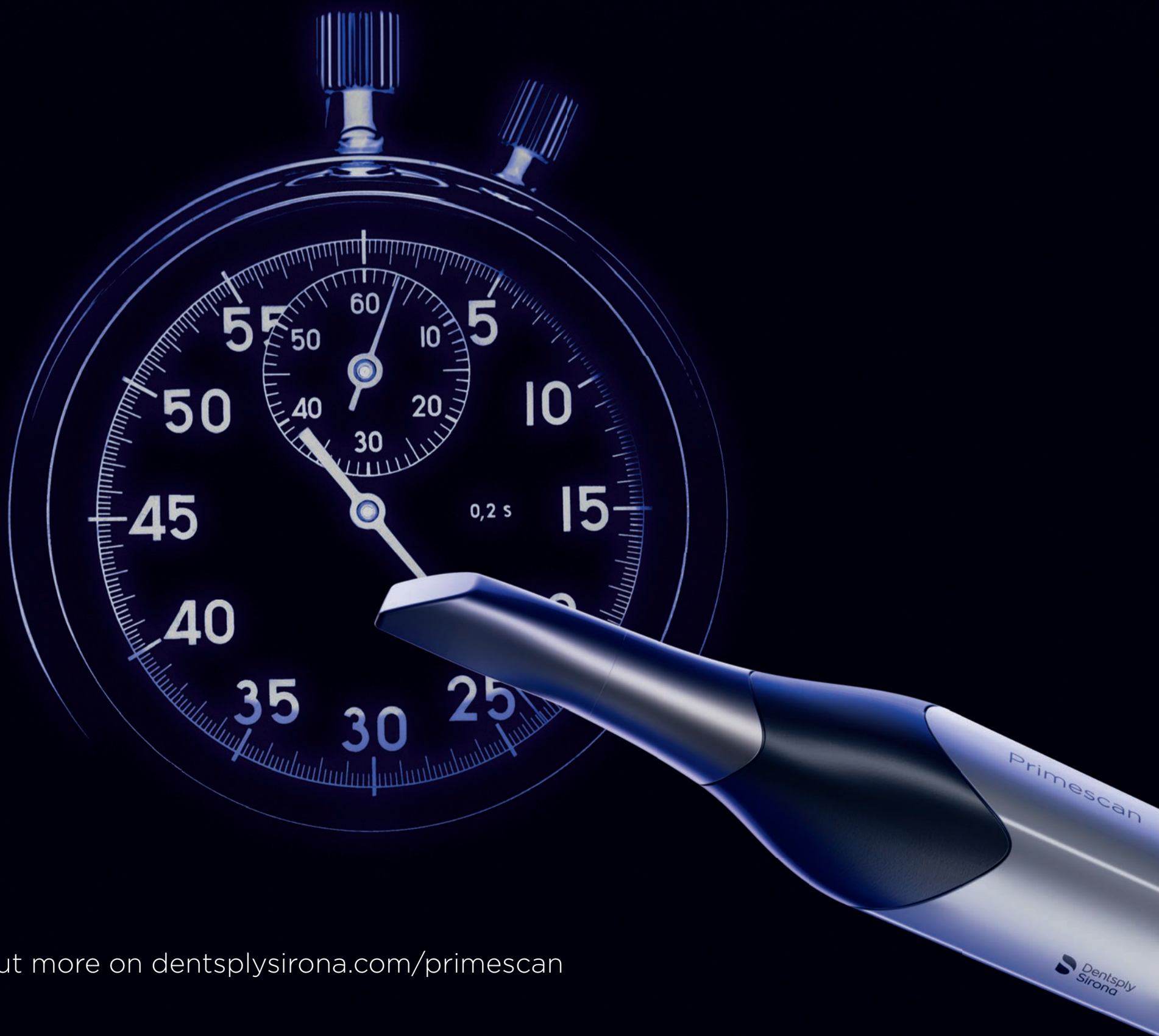
CAPP

www.cappmea.com/confex

Tel./WhatsApp: +971 50 279 3711 | Email: events@cappmea.com

Full arch scan in one
minute. A quadrant
in just seconds.
Either way, it's prime.

Enjoy the scan.
With the speed of Primescan.



Part 4: Sustainable dentistry in 500 words or more



In this six-part series, Dr Sanjay Haryana writes in brief about different aspects of sustainability in dentistry. (Image: anncapictures/Pixabay)

By Dr Sanjay Haryana

SINGAPORE: Sustainable dentistry has two major outcomes, namely good oral health and reduced environmental impact. Good oral health can be achieved through preventive dentistry and quality operative dentistry, which reduce dental visits and dental waste and drastically cut travel time, a major contributor to greenhouse gas emissions. In this fourth part of the series, we will discuss the importance of preventive and operative dentistry in achieving sustainability and reducing emissions within dental care.

Dental caries and periodontitis are two of the most common diseases globally¹ and are classified as non-communicable, chronic manifestations that “tend to be of long duration and are the result of a combination of genetic, physiological, environmental and behavioural factors”, according to the World Health Organization.

Community water fluoridation was introduced in 1945 and has become common practice in close to 25 countries to date.² In 2017, despite the introduction of fluoride, the caries prevalence in perma-

nent dentition was estimated to affect approximately 25% of the global population.¹ Fluoride toothpaste, which became widespread in the late 1970s, has decreased caries prevalence dramatically, but use and access to fluoride are still limited to developed countries.³

Nowadays, half of the global population suffer from periodontitis, whereas 10–15% have severe periodontitis. This has not changed in the last 20 years, although awareness of periodontal disease has increased. There are various reasons for this lack of change. Firstly, periodontitis is a silent disease that progresses slowly and has mild symptoms, such as bleeding, that are neglected by patients. Secondly, there is still little awareness of periodontitis within the dental profession, and signs of the disease are often ignored. Therefore, periodontitis may often progress to a stage where tooth loss is inevitable.

Finally, not everyone has access to the necessary facilities in order to get diagnosed and treated properly. Seeking to facilitate access to early diagnosis and treatment, the United Nation’s Sustainable Development Goal 3—Good Health and Well-being—aims to

reach out to the global population with essential health services.

From an environmental perspective, we want the population to have immediate access to dental care, but we do not want patients to visit a dental practice too often. As previously discussed in this series, patient and staff travel are the largest emitters of greenhouse gases within dentistry.⁴ The other two culprits are the manufacturing of dental supplies and the dental waste generated in daily practice.⁵ Since dental appointments are rather short, and a single treatment can lead to multiple sessions, dentistry is responsible for higher emissions than other healthcare services. Additionally, since dental appointments accumulate over a patient’s lifetime, total emissions end up being extremely high compared with other healthcare treatments.⁶

FDI World Dental Federation promotes source reduction through good oral health or via prevention in order to decrease emissions,⁶ meaning that preventive dentistry results in fewer appointments, fewer recall visits, a reduction in materials and, consequently, in less clinical waste.

Dental diseases that are preventable or are in the early stages of progression should be targeted using individualised maintenance plans where home care should be the centre of attention.⁵ Some preventive interventions have higher emissions because they require several brief appointments, such as fluoride varnish application on high-risk caries patients. In these cases, dental professionals should adopt a cost-benefit approach and consider the net reduction of emissions over a lifetime of dentistry.⁶

High-quality operative dentistry

Quality operative care is something we should all strive towards since it gives practitioners a sense of pride. Additionally, regarding emissions, it helps to reduce repairs, remakes and early replacements of dental constructions.

Every dental specialty shares the same core beliefs. To perform high-quality operative dentistry, it is essential to constantly update your knowledge, undergo continuous training and promote teamwork within the dental team and with external consultants.⁵ The common denominator of preven-

tive care is that everyone needs a maintenance plan that focuses on home care in order to ensure the long-term success of the operative treatment.

Even though reducing emissions is a priority, the primary aim of sustainable dentistry is to improve the quality of life through preventive care and quality operative care. And in order to be able to offer this to the underprivileged part of the global population, increased emissions are inevitable.

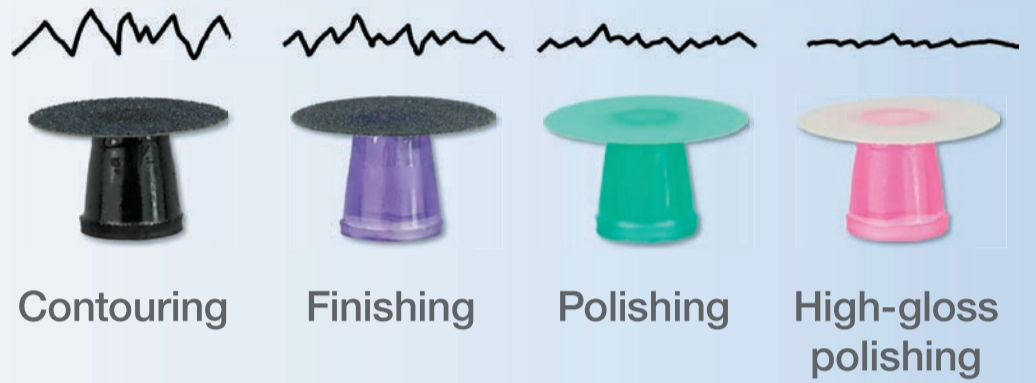
Editorial note: In this six-part series, Dr Sanjay Haryana will give an overview of different aspects of sustainability in dentistry. A list of references is available from the publisher.

About the author:

Dr Sanjay Haryana is an Education and Odontology Specialist at TePe Oral Hygiene Products.

Super-Snap

Superior finishing and polishing disks



www.shofu.com

Composan LCM and Composan LCM flow—light-curing micro-hybrid composites

By Promedica

Composan LCM is a universal light-curing micro-hybrid composite suitable for fillings in the anterior and posterior area and for the inlay technique. Its high filler content and well-balanced resin matrix guarantee minimal abrasion, low polymerisation shrinkage, as well as high compressive and transverse strength.

Perfect aesthetic results

Composan LCM convinces with its great colour stability, excellent polishing properties, perfect adaptation to the natural tooth colour and its toothlike brilliance. Therefore, fillings made of Composan LCM meet the highest aesthetic requirements of dentists and patients.

Also available as a flowable version

Composan LCM flow is suitable for various indications like minimally

invasive preparation, fillings of Class III to V, extended fissure sealing, etc. Moreover, it is ideal for linings under composites due to its easy application and perfect adaptation to the cavity walls or tooth substance. Composan LCM flow levels out irregularities of the cavity floor and reinforces the bonding layer. Due to its elastic properties the material is also highly stress absorbing. Its low viscosity ensures good wetting capability and highly aesthetic results.

For more information, contact:
Promedica Dental Material GmbH
Domagkstrasse 31
24537 Neumuenster
Germany
Tel: +49 43 21 / 5 41 73
E-mail: info@promedica.de



(Image: Promedica)

Osstell announces new CEO will take up position in September

By Dental Tribune International

GOTHENBURG, Sweden: Osstell, a W&H company that is known for the development of its unique ISQ diagnostic technology, recently announced that Malin Gustavsson will succeed Jonas Ehinger as CEO at the end of September.

Having more than 15 years of senior management in the medical device industry, Gustavsson brings extensive experience to her new position. Her former employers include Straumann and Elos Medtech, a leading global development and manufacturing company.

"I am very happy to have been entrusted to lead and contribute to the company's continued growth together with the board and the team at Osstell. Since I worked in the dental industry for many years, I know the company from before



Osstell's new CEO Malin Gustavsson brings more than 15 years of experience in the medical device sector to her new position. (Image: Osstell)

and its strong brand," Gustavsson commented.

She continued: "I am very much looking forward to taking over as CEO at Osstell shortly and to getting to know both the customers, partners and the employees more closely, along with its business, to drive the company's strategy with a strong focus on delivering clinical value to the market."

Klaus Maier, W&H Group CEO, said: "Malin's extensive experience within the dental market her business development and managerial skills will help drive further growth of Osstell and will be of great value to the W&H Group. We are excited to welcome Malin."

He added: "We are sad to see Jonas leave Osstell and the W&H Group but are very grateful for his contributions and dedicated continuous

development and now wish him the very best in his new assignment."

Ehinger has led Osstell for the past 12 years, which were characterised by strong growth and different ownership structures. During this time, the company strengthened its focus on its ISQ technology and, more recently, developed Osstell-Connect, which will be a main focus in the coming years. Ehinger will take on another CEO position outside of the dental and medical industry.



UN COLOURED



What you should know
about your colour IQ!

SENSODYNE

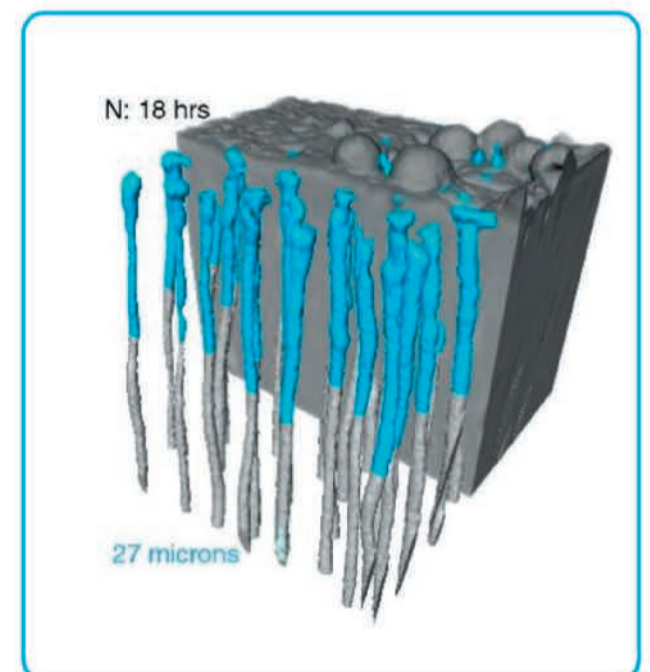
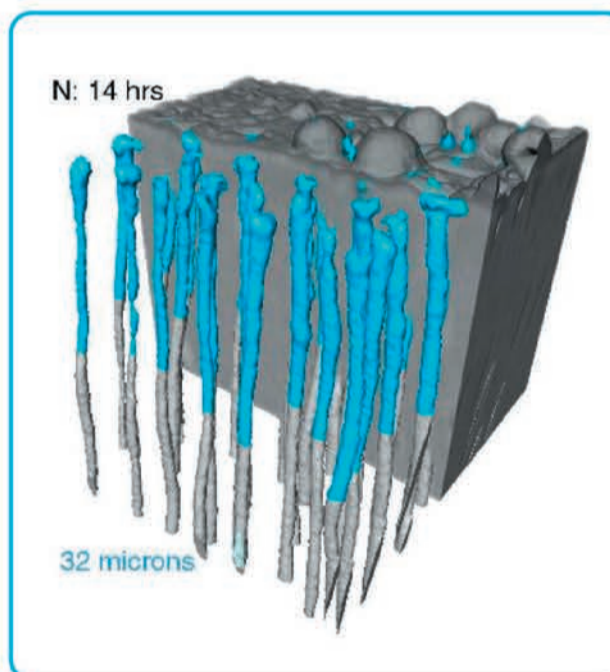
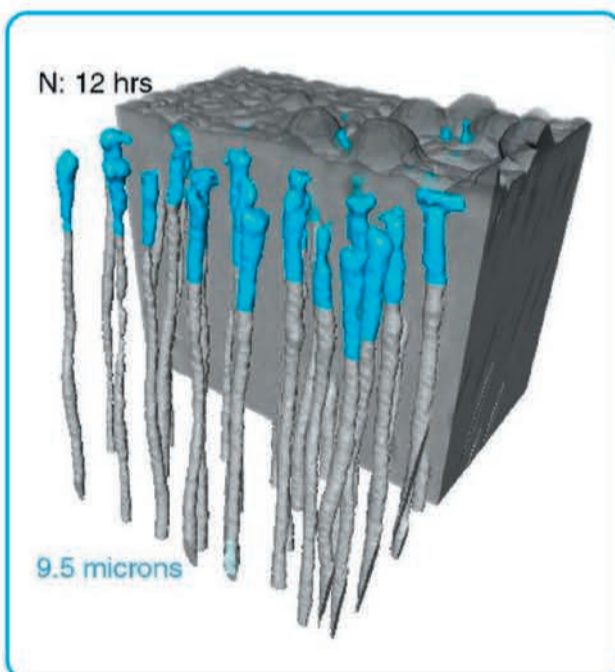
ADVANCED REPAIR & PROTECT DEEP REPAIR*

Offers long-term protection that helps your patients enjoy life without worrying about pain of sensitive teeth.¹⁻³

Optimised Formula

- Scientifically proven to go deep⁴
- Offers targeted occlusion^{5,6}
- Optimised for improved patient product usage experience (such as improved viscosity and texture)¹⁷

The synchrotron studies showed Sensodyne Advanced Repair and Protect Deep Repair resulted in the deep occlusion of tubules.⁴



Visualisation of average occlusion depth (μm) in vitro in dentine specimens treated with NovaMin (N) based toothpaste formulation of Sensodyne Advanced Repair and Protect Deep Repair (containing 5% NovaMin).⁴



At **GSK Consumer Healthcare**, we are determined to advance the science of sensitivity and continue to drive improvements in our **Sensodyne** formulations. That determination has led us to the European Synchrotron Radiation Facility (ESRF) in Grenoble – one of the biggest synchrotrons in the world – to push the boundaries of what's possible in understanding toothpaste technology



*vs previous Sensodyne Advanced Repair & Protect

What is a synchrotron?

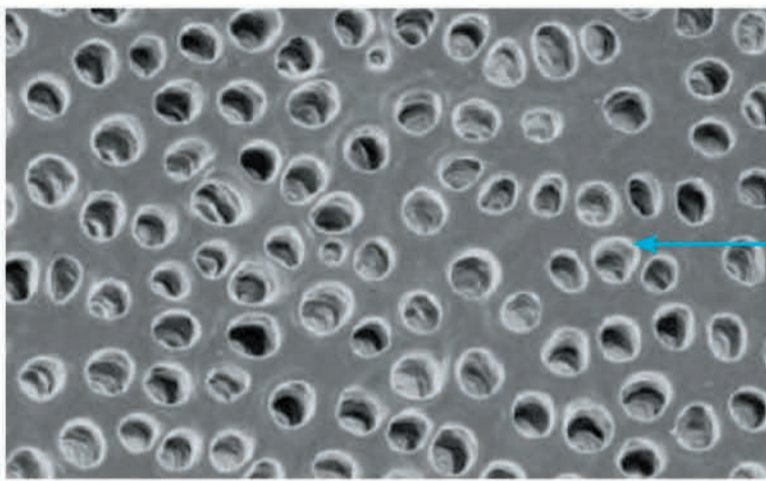


- Stadium-sized machine which is an extremely powerful source of X-rays, 10 trillion times brighter than medical x-rays.⁸
- High-energy electrons travel around the giant ring, to produce the X-rays, emitted as beams⁹
- Allows visualisation of the structure of matter down to the atomic level⁸

European Synchrotron Radiation Facility in Grenoble

New formulation offers targeted occlusion

Tubule occlusion from top down (surface) imaging



Dentin tubule

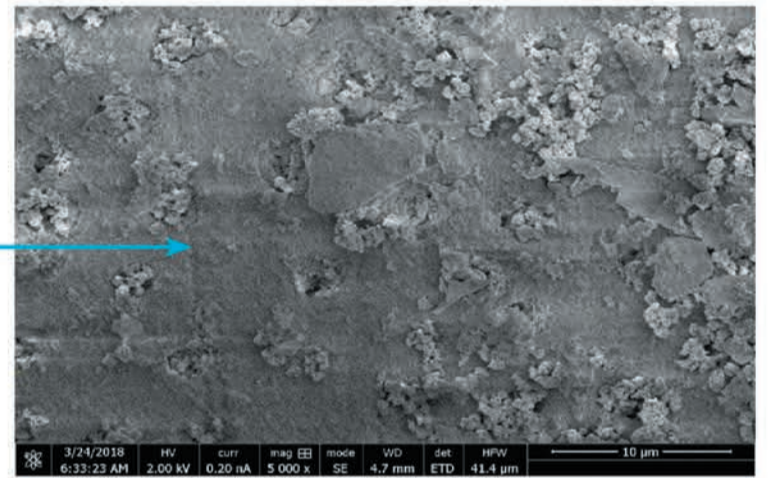


Figure 1. Dentin samples prior to treatment highlight exposed tubules⁶

Figure 2. Dentine treated with Advanced Repair and Protect Deep Repair showing top down occlusion which appears targeted and protrudes from the surface of the tubules.⁵

3 Formulations for every need!

