

## ENDO TRIBUNE

"He brought a world of enthusiasm and knowledge to the global endodontic..."

►A1-8

## LAB TRIBUNE

Making a perfect ceramic crown on a titanium abutment in the esthetic zone

►B1-4

## HYGIENE TRIBUNE

Interview with Maha Yakob: "Up to ten times more plaque removal"

►C1-4

## IMPLANT TRIBUNE

Neoss ScanPeg - simplified intra-oral scanning

►D1-4

## ORTHO TRIBUNE

Ormco Unveils Symetri™ Clear ceramic twin bracket system

►E1-4

# Lasers in Dentistry Mastership Programme Group 6 Registration Opens

Aachen Dental Laser Center (AALZ) and RWTH International Academy - RWTH Aachen University announced new partnership with CAPP in Dubai, UAE for the Lasers in Dentistry Mastership Programme.

## Mastership Programme Lasers in Dentistry Certification Course



From Aachen Dental Laser Center & RWTH International Academy - RWTH Aachen University & CAPP

DUBAI  
2018-2019



## Group 6 Registration Open

- \* Starting on 21 November 2018
- \* Consists of 3 Modules, total of 12 days
- \* Taking place in Dubai, UAE (Module 1 & 2) and Aachen, Germany (Module 3)
- \* Training delivered by European specialist
- \* Hands-on training in every module
- \* Target audience: GP Dentists and other Specialist Dentists
- \* Pathway to Master of Science in Lasers in Dentistry from RWTH Aachen University, Germany

www.cappmea.com/laser



By Dental Tribune MEA / CAPPmea

**DUBAI, UAE:** The RWTH Aachen University is one of the leading universities of Germany and Europe, awarded as University of Excellence. The Aachen Dental Laser Centre – AALZ GmbH - is the worldwide operating independent leading dental laser institution under the umbrella of the university campus. In cooperation with the Clinic for Dental Conservation, Periodontology and Preventive Dentistry at the University of Excellence RWTH Aachen, the Aachen Center for Laser Dentistry (AALZ) has created the first dental laser education institute in Germany. Known for its research in laser-assisted dentistry, it cooperates nationally and internationally with major research facilities.

CAPP has been recently named an exclusive partner of AALZ and RWTH Aachen University in Dubai, UAE and will be conducting the Lasers in Dentistry Mastership programme in Dubai starting on 21 November 2018 (Group 6)

The use of lasers is associated with minimal contact, reduced vibration and pain, as well as a reduction in bleeding, leading to a more comfortable overall experience for the patient. Lasers are highly versatile tools that can be successfully used in a wide range of applications in the treatment of mucous membranes, hard tooth structures and bones.

Additionally, the specific properties of lasers allow the development of radically new treatments and surgical techniques, and improvements in treatment success rates have been observed when lasers are applied. Modern facilities and increased customer satisfaction help ensure the long-term financial success of any dental practice and, for these reasons, dentists take the opportunity to expand and improve their range of treatments. Lasers are primarily used in the following fields: Diagnosis, Cariology, Endodontics, Implantology, Surgery, Periodontology, Cosmetic treatments.

Dentistry Mastership programme in Dubai, UAE. In the UAE, five groups have already completed successfully the Mastership programme and a few dozen groups in over 10 international countries. Group 6 will be starting on 21 November 2018.

The course is divided into 3 modules requiring 12 days of attendance over a one year period and upon completion it offers the participants a chance to obtain a Mastership Certificate (Certification course), recognising them as a specialist in laser therapy in dentistry RWTH International Academy - RWTH Aachen University, the post-graduate education wing of the University. Module 1 includes a Laser Safety Officer course that will allow the Participants to obtain a Laser Safety Officer certification: Laser construction, function and handling.

When a delegate successfully completes the 3 Modules of the Lasers in Dentistry Mastership programme, she/he can continue to the "Master of Science in Lasers in Dentistry" from RWTH Aachen University (optional only). The delegate will be exempt from 2 out of the 10 modules of the Master in Aachen as these modules would be completed during the Lasers in Dentistry Mastership programme already.

More information about the programme could be found on the following link: [www.cappmea.com/laser](http://www.cappmea.com/laser)

### CAPP EVENTS

Tel: +971 4 347 6747  
Mob: +971 52 8423659  
E-mail: [p.mollov@cappmea.com](mailto:p.mollov@cappmea.com)  
Web: [www.cappmea.com/laser](http://www.cappmea.com/laser)

CAPP, Aachen Dental Laser Center (AALZ) and RWTH International Academy - RWTH Aachen University have launched Lasers in Den-

# 10<sup>th</sup> anniversary of the Dental Facial Cosmetic Conference & Exhibition

By Dental Tribune MEA / CAPPmea

**DUBAI, UAE:** The 2018 Dental Facial Cosmetic Conference & Exhibition will be celebrating its 10th Anniversary this year. It has been incredible to experience the growth of this conference over the past decade, to review progress and challenges in cosmetic dentistry.

The term "cosmetic dentistry" was

invented in the 1990s, but it actually dates back to the ancient times. We all know that the people used wooden sticks to clean their teeth for beauty and not for health in early 3000 BC.

Ten years together – one decade, learning through experience and exchange, our dental communities come together to contribute on the evolution of cosmetic dentistry and

development of the field. Thanks to the modern technologies and fast growing evolving of the materials and techniques; cosmetic treatment from teeth whitening, laser procedures, composite fillings, dental bonding to veneers and dental implants, cosmetic dentistry is defining a new epoch.

And we are very proud to be part of this progress for the last decade and

to contribute with high-quality education.

Hope to welcome you all at the event.

#### CAPP EVENTS

Tel: +971 4 347 6747

Mob: +971 50 4243072

E-mail: [events@cappmea.com](mailto:events@cappmea.com)

Web: [www.cappmea.com](http://www.cappmea.com)

**10<sup>th</sup> edition**  
**Dental Facial Cosmetic Conference & Exhibition**  
**09-10 November 2018**  
 InterContinental Hotel, Dubai Festival City, Dubai, UAE

## Conference Programme



**DR. RICCARDO AMMANNATO, ITALY**

Advances in Composite Restoration



**DR. STEFEN KOUBI FRANCE**

From Dogma to Everyday Dentistry in the Aesthetic Zone...



**DR. CHRISTIAN MAKARY LEBANON**

Advanced Piezosurgery Techniques: A clinical and Scientific Rationale



**DR. CARLOS SABROSA BRAZIL**

Simple and Reliable Procedures in Modern Restorative Dentistry



**DR. RAMAN S AULAKH UK**

Aesthetic Dentistry and Clear Aligner Therapy



**DR. MATTHEW HOLYOAK UK**

Management of Anterior Tooth Trauma



**PROF. CRISTIAN DINU ROMANIA**

Guided Bone Regeneration in Simple and Complex Ridge Augmentation



**DR. SHANKAR IYER USA**

Management of Complications and Implant Failures



**PROF. ANDREA MOMBELLI, SWITZERLAND**

Periodontics in the Implant Era...



**DR. SYLVIA RAHM GERMANY**

All About Esthetic Composite Restoration - Direct and Indirect Procedures



**DR. STEFEN KOUBI FRANCE**

Worn Dentition in the Everyday Practice: The Full Mock up Concept



**DR. EDUARDO MAHN CHILE**

The Face and Tooth Integration in Modern Dentistry. New Insights



**DR. MAHMOUD EZZAT GHAZI, EGYPT**

DSD Concept in Integration with Facial Analysis



**DR. KAROL BABIŃSKI POLAND**

Direct or Indirect - Are You Sure it's up to You?



**PROF. PAUL TIPTON UK**

Influence of Vertical Dimension on Facial Aesthetics

**Target Group:** Dentists, Dental Team, Dental Students, Dental Industry, Dental Hygienists

**Accreditation:** 14 CE Credits | Est. DHA 12 CME | Est. HAAD 12 CME

Tel: +971 4 347 6747 | Mob: +971 50 2793711 | E: [events@cappmea.com](mailto:events@cappmea.com)

W: <http://cappmea.com/aesthetic/landing/>

#### IMPRINT

**PUBLISHER/PRESIDENT/CHIEF EXECUTIVE OFFICER**  
Torsten R. OEMUS

**CHIEF FINANCIAL OFFICER**  
Dan WUNDERLICH

**DIRECTOR OF CONTENT**  
Claudia DUSCHEK

**SENIOR EDITOR**  
Yvonne BACHMANN

**CLINICAL EDITORS**  
Nathalie SCHÜLLER  
Magda WOJTKIEWICZ

**EDITOR & SOCIAL MEDIA MANAGER**  
Monique MEHLER

**EDITORS**  
Brendan DAY  
Kasper MUSSCHE

**JUNIOR EDITORS**  
Franziska BEIER  
Luke GRIBBLE

**COPY EDITOR**  
Ann-Katrin PAULICK  
Sabrina RAAFF

**CHIEF TECHNOLOGY OFFICER**  
Serban VERES

**JUNIOR BUSINESS DEVELOPMENT & MARKETING MANAGER**  
Alyson BUCHENAU

**DIGITAL PRODUCTION MANAGER**  
Tom CARVALHO

**JUNIOR DIGITAL PRODUCTION MANAGER**  
Hannes KUSCHICK

**PROJECT MANAGER ONLINE**  
Chao TONG

**IT & DEVELOPMENT**  
Serban VERES

**GRAPHIC DESIGNER**  
Maria MACEDO

**E-LEARNING MANAGER**  
Lars HOFFMANN

**PRODUCT MANAGER CME**  
Sarah SCHUBERT

**PRODUCT MANAGER SURGICAL TRIBUNE & DDS. WORLD**  
Joachim TABLER

**SALES & PRODUCTION SUPPORT**  
Nicole ANDRA  
Puja DAYA  
Madleen ZOCH

**ACCOUNTING**  
Karen HAMATSCHEK  
Manuela HUNGER

**DATABASE MANAGEMENT & CRM**  
Annachiara SORBO

**MEDIA SALES MANAGERS**  
Antje KAHNT (International)  
Melissa BROWN (International)  
Hélène CARPENTIER (Europe)  
Matthias DIESSNER (Key Accounts)  
Weridiana MAGESWIKI (Latin America)  
Barbora SOLAROVA (Eastern Europe)  
Peter WITTECZEK (Asia Pacific)

**EXECUTIVE PRODUCER**  
Gernot MEYER

**ADVERTISING DISPOSITION**  
Marius MEZGER

**DENTAL TRIBUNE INTERNATIONAL**  
Holbeinstr. 29, 04229 Leipzig, Germany  
Tel.: +49 341 48 474 302  
Fax: +49 341 48 474 173  
[www.dental-tribune.com](http://www.dental-tribune.com)  
[info@dental-tribune.com](mailto:info@dental-tribune.com)

**DENTAL TRIBUNE ASIA PACIFIC LTD.**  
Room A, 20/F  
Harvard Commercial Building  
105-111 Thomson Road, Wanchai, HK  
Tel.: +852 3113 6177  
Fax: +852 3113 6199

**THE AMERICA, LLC**  
116 West 23rd Street, Ste. 500, New York  
N.Y. 10011, USA  
Tel.: +1 212 244 7181  
Fax: +1 212 244 7185

#### DENTAL TRIBUNE MEA EDITION EDITORIAL BOARD

Dr. Aisha SULTAN ALSUWAIDI, UAE  
Prof. Paul TIPTON, UK  
Prof. Khaled BALTO, KSA  
Dr. Ninette BANDAY, UAE  
Dr. Nabeel HUMOOD ALSABEHA, UAE  
Dr. Naif Almosa, KSA  
Dr. Mohammad AL-OBAIDA, KSA  
Dr. Meshari F. ALOTAIBI, KSA  
Dr. Jasim M. AL-SAEEDI, Oman  
Dr. Mohammed AL-DARWISH, Qatar  
Dr. Dobrina MOLLOVA, UAE  
Dr. Ahmed KAZI, UAE  
Dr. Munir SILWADI, UAE  
Dr. Khaled ABOUSEADA, KSA  
Dr. Rabih ABI NADER, UAE  
Dr. Ehab RASHED, UAE  
Aiham FARRAH, CDT, UAE  
Retty M. MATTHEW, UAE

#### PARTNERS

Saudi Dental Society  
Saudi Ortho Society  
Lebanese Dental Association  
Qatar Dental Society  
Oman Dental Society  
American Academy of Implant Dentistry  
International Federation of Dental Hygienist  
British Academy of Restorative Dentistry  
British Academy of Dental Implantology

**DIRECTOR OF mCME**  
Dr. Dobrina MOLLOVA  
[mollova@dental-tribune.me](mailto:mollova@dental-tribune.me)  
Tel.: +971 50 42 43072

**DIRECTOR**  
Tzvetan DEYANOV  
[deyanov@dental-tribune.me](mailto:deyanov@dental-tribune.me)  
Tel.: +971 55 11 28 581

**PRINTING HOUSE & DISTRIBUTION**  
Al Nisr Printing  
P. O. Box 6519, Dubai, UAE  
800 4585/04-4067170

©2018, Dental Tribune International GmbH.  
All rights reserved. Dental Tribune International makes every effort to report clinical information and manufacturer's product news accurately, but cannot assume responsibility for the validity of product claims, or for typographical errors. The publishers also do not assume responsibility for product names or claims, or statements made by advertisers. Opinions expressed by authors are their own and may not reflect those of Dental Tribune International.

# Solutions for better, safer, faster dental care



Dentsply and Sirona have joined forces to become the world's largest provider of professional dental solutions. Our trusted brands have empowered dental professionals to provide better, safer and faster care in all fields of dentistry for over 100 years. However, as advanced as dentistry is today, together we are committed to making it even better. Everything we do is about helping you deliver the best possible dental care, for the benefit of your patients and practice.

Find out more on  
[dentsplysirona.com](https://dentsplysirona.com)

#### Clinical Procedures

- Preventive
- Restorative
- Orthodontics
- Endodontics
- Implants
- Prosthetics

#### Platform Technologies

- CAD/CAM
- Imaging Systems
- Treatment Centers
- Instruments

THE DENTAL  
SOLUTIONS  
COMPANY™

 **Dentsply  
Sirona**

# Anterior challenge: obtain high esthetics with two different restoration materials and cements

A case study by Dr. Carlos Eduardo Sabrosa, DDS, MSD, DScD featuring 3M™ RelyX™ Veneer Cement and 3M™ RelyX™ Unicem Aplicap™ Self-Adhesive Resin Cement



Fig. 1: Younger male patient with failing composite fillings on central well as right lateral incisors. Also in need of a crown on left lateral incisor. Agreement to make three veneers in addition to the crown to improve his aesthetics and cover the defects.



Fig. 2: Situation after tooth preparation.



Fig. 3: The placement of two retraction cords per tooth to open up sulcus well for impression taking.



Fig. 4: Application of 3M™ Impregum™ L DuoSoft™ Polyether Light Body Impression material keeping tip well immersed.

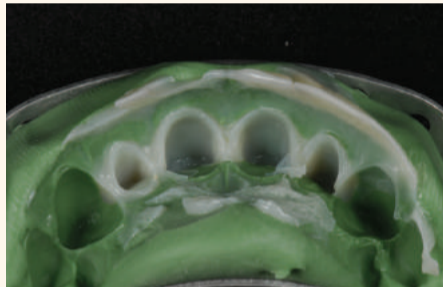


Fig. 5: Making the temporary restoration with 3M™ Protemp™ 4 Temporization Material and a silicone matrix.



Fig. 6: Finished temporary restoration.



Fig. 7: Temporary in the mouth.



Fig. 8: Fabrication of the final restorations in the laboratory: three Lithium disilicate veneers and a zirconia crown.



Fig. 9: Try in of the restorations with 3M™ RelyX™ Try-In Paste to determine the optimal cement shade.



Fig. 10: Aspect after try in.

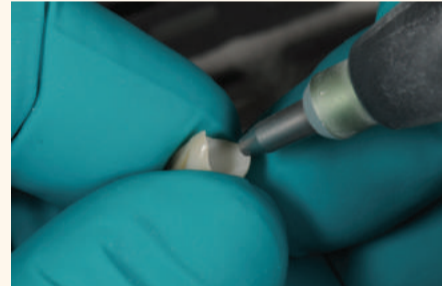


Fig. 11: Pretreatment of the bonding surface of the zirconia crown with aluminum oxide (maximum 2 bar and a grain-size of 30 or 50 μm).

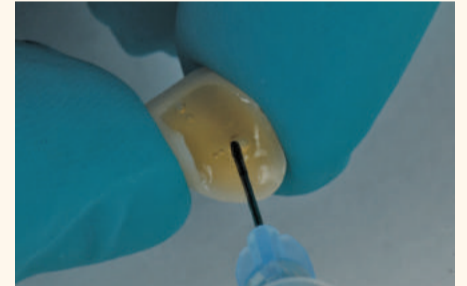


Fig. 12: After etching with hydrofluoric acid the veneers are silanised with 3M™ Single Bond Universal Adhesive, rubbing it in for 20 seconds and then air thinning it gently until no more ripples are observed.



Fig. 13: Prior to cementing the crown the tooth preparation is mechanically cleaned with pumice paste, rinsed and gently dried to leave the surface slightly moist and shiny.



Fig. 14: 3M™ RelyX™ Unicem Aplicap™ Self-Adhesive Resin Cement is directly applied into the previously sandblasted zirconia crown.



Fig. 15: The crown is firmly seated under finger pressure and the excess removed with a scaler after a 1-2 second tack cure. Final cure for 20 seconds per surface. Finish and polish as needed.



Fig. 16: The veneer preparations are etched with phosphoric acid.



Fig. 17: Apply 3M™ Single Bond Universal Adhesive and rub it in for 20 seconds.



Fig. 18: 3M™ RelyX™ Veneer cement is applied into each of the pretreated veneers.



Fig. 19: Each veneer is carefully placed under slight pressure to extrude the excess. A 20 second spot light cure away from the margin is recommended to ensure a stabilized restoration in place prior to cleaning up the excess. Final cure for 30 seconds from all surfaces.



Fig. 20: Final restorations in place.



Fig. 21: Lateral view of a happy patient.



**Dr. Carlos Eduardo Sabrosa, Brazil**

Dr. Sabrosa is an Associate Professor at the State University of Rio de Janeiro Dental School. He received his DDS in 1992 from the State University of Rio de Janeiro Dental School and the Clinical Advanced Graduate Studies (CAGS) in Prosthodontics from Boston University Goldman School of Dental Medicine in 1996. He earned the Steven Gordon Research/Clinical Award in 1995 and 1996 and the Tylman Research Grant Award in 1993 from the American College of Prosthodontics. Dr. Sabrosa also received his MSD and DScD in Prosthodontics/Biomaterials from Boston University Goldman School of Dental Medicine in 1997 and 1999 consecutively. He has a private practice, focused in Oral Rehabilitation and Implantology, in Leblon, Rio de Janeiro, Brazil.

Before using the products described, please refer to the instructions for use provided with the product packages. The featured 3M product may be known with an alternative name in different regions.

3M, Aplicap, DuoSoft, Impregum, Protemp, RelyX and Scotchbond are trademarks of 3M or 3M Deutschland GmbH. Used under license in Canada. All other trademarks are owned by other companies. © 3M 2018. All rights reserved. Dr. Sabrosa has received an honorarium from 3M Oral Care.

**3M** Science.  
Applied to Life.™

# Simple. Proven. Rely-able.

Your practice depends on working smarter, not just harder. Smarter means increasing the efficiency of people, technology and supplies. That's something 3M knows a lot about.

For 50 years, and around the world, customers have trusted 3M cements to deliver reliable, predictable results that become the cornerstone of successful practices.

**3M™ Dental Cements  
Trusted for Generations.  
[3M.com/dentalcements](http://3M.com/dentalcements)**



**50**  
YEARS  
**3M Dental  
Cement  
Innovation**  
RelyX™ Durelon™ Ketac™

# 3Shape releases the newest version of its CAD/CAM software

By 3Shape

**COPENHAGEN, Denmark:** Well known for its quality products and a global leader in 3-D scanners and dental software solutions, 3Shape has recently released the newest version of its CAD/CAM software for dental laboratories, Dental System 2018. The new system now has increased flexibility and functionality, making scanning, design and production workflows more efficient and dependable for dental technicians.

The increased flexibility of Dental System 2018 gives technicians the ability to combine many types of scans, as well as save and access designs during any step in the workflow. According to 3Shape, this makes the design of cases, especially complicated indications, simpler, more efficient and more predictable.

During development of the latest version of its CAD/CAM software, 3Shape worked closely with dental technicians, and the company said it has been able to make significant

gains in all the right areas. "Dental System 2018 is a great leap forward. It opens new possibilities and brings us the much-needed freedom to import, export and align scans freely. The solution's stability has been improved and the workflows are optimised. I love it!" said Przemek Seweryniak, CEO of Cosmodent laboratory in Sweden.

The Danish company boasts an open ecosystem, offering a range of treatment workflows, integrated libraries, design service partnerships and in-

terfaces to virtually all manufacturing equipment and materials. With over 80 sleeve and implant libraries, integrated mills, 3-D printers and materials, laboratories can take advantage of open digital dentistry to serve the needs of their dentists and patients.

"This new 3Shape Dental System version received exceptionally positive feedback from the dental technicians taking part in the beta testing. Higher reliability and solid improvements have made Dental System

2018 a fantastic release! I really look forward to our users across the world benefitting from the new version," said Rune Fisker, Vice President of Dental Lab at 3Shape. [DT](#)

For more information or to request a demo, please contact your local 3Shape representative.

## Beautiful II LS

By SHOFU

Beautiful II LS breaks new ground in direct resin technology with its extremely low polymerization shrinkage and related stress while exhibiting superior aesthetics, optimal mechanical properties, ease of handling and polish, lasting natural lustre and remarkable abrasion resistance for universal application.

A novel low shrinkage "SRS" monomer formulation and unique filler technology significantly minimizes polymerization shrinkage stress while resulting in a more durable, robust and stable polymer complex that offers greater predictability to your restorations. Tooth-like optical characteristics enable an easy shade match for a wide spectrum of sim-

ple to complex, challenging cases. Beautiful II LS exhibits additional anti-plaque benefits and sustained fluoride protection to all your restorations. A rational selection of universal, opaceous dentin, bleach white and enamel shades allow you to explore a plethora of possibilities ranging from simple to complex polychromatic restorations. [DT](#)



## Cara Print 4.0 The new 3D printer from Kulzer. Quick, precise, economical: The perfect fit.

Accelerated precision for perfect polymer restorations



By Kulzer

### Quick & Easy

Thanks to a user-friendly interface, both beginners and those experienced in CAD/CAM can benefit from the high average production speed of cara Print 4.0.

- One hour or less to print most restorations
- Simultaneous printing of multiple restorations with no time increase
- Digital Light Projection (DLP) generates each layer in a single flash

### Precise & accurate

cara Print 4.0 results in smoother, more homogeneous surfaces than competing 3D printers. The exceptional precision in the z-axis and the finely tuned parameters for each material mean that dental technicians can position restorations in almost any direction – and always achieve the perfect fit.

### Economical

The in-house manufacturing process with cara Print 4.0 reduces costs and production time for many applications when compared to analogue methods, milling and other 3D printers.

- Additive process means minimal waste compared to milling

- Long-lasting resin tray, rather than disposable
- Refill system rather than cartridges that require care in cleaning

### Universal solution for all polymer restorations

Due to the size of the material tray and exceptional 3D accuracy, cara Print 4.0 can be used for the production of all polymer-based dental appliances.

### Overview of applications

dima Print materials will be available soon for further indications, including:

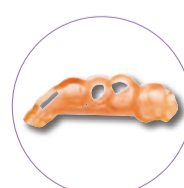
- Temporary prosthetic restorations
- Permanent prosthetic restorations (e.g. crowns & bridges)
- Denture bases [DT](#)



A night guard, made with dima Print Ortho



An individual impression tray, made with dima Print Impression



A surgical drill guide, made with dima Print Guide



A dental model, made with dima Print Model



A CAD-to-cast structure, made with dima Print Cast

**Aboubakr Eliwa**

Area Manager Middle East

Tel: + 97 (1) 4 294 35 62 (Office)

Fax: + 97 (1) 4 294 35 63

Mob: +97 (1) 56506 89 76

E-mail: [aboubakr.elywa@kulzer-dental.com](mailto:aboubakr.elywa@kulzer-dental.com)

Web: [www.kulzer.com](http://www.kulzer.com)

# MIND BLOWING

## MyCrown

- Fully Integrated System
- Fast and Easy to Use
- Grow Your Clinic



Find out more on  
[www.fonadental.com](http://www.fonadental.com)

**FONA**  
CLOSER TO YOU

# When design and function come together... you get FUSION!

By SWAN

**Tight contacts – guaranteed!**  
Superior tooth separation force through advanced engineering and material selection guarantees perfect contacts every time.

**Ideal anatomy!**  
Soft-Face™ silicone ring tips with enhanced marginal ridge anatomy hug the pre-contoured dead-free matrices to the tooth for flash free, perfectly contoured restorations.

**Simplified technique!**  
Composi-Tight® 3D Fusion™ is packed with features like easy ring stacking, over-the-wedge placement and Ultra-Grip™ anti-ring slip extensions that make system use intuitive and frustration free. [D11](#)



**Only a sectional matrix can deliver results like this!**

**Tofflemire-style System**

- fails to restore proximal anatomy
- This contact at the marginal ridge
- large food trap below
- increased likelihood of fracture, occlusal interference, recurrent caries and periodontal disease

**Composi-Tight® Sectional Matrix System**

- ✓ Operator-friendly retaining system
- ✓ Naturally contoured bands
- ✓ Anatomically correct contacts
- ✓ Contacts at the height of contour
- ✓ Rings produce optimal tooth separation for excellent, tight contacts

**Only Composi-Tight® 3D Fusion™ can make the technique this intuitive and frustration free!**

- Place the matrix band:** Dead-soft three dimensionally contoured matrices have placement tabs for easier occlusal placement and Garrison's revolutionary non-stick coating for hassle-free removal.
- Wedge firmly:** Composi-Tight® 3D Fusion™ Ultra-Adaptive wedges glide in but won't back out. Their soft, flexible exterior readily adapts to interproximal irregularities for a superior gingival seal.
- Place the ring:** All three of Composi-Tight® 3D Fusion's separator rings will fit right over the wedge for easier placement. With Ultra-Grip™ retention extensions, they will stay firmly in place from the distal of the canine to the widest of molar preparations.

**An all-new system designed to handle even the toughest cases**

More than 20 years of sectional matrix leadership and an incredible amount of feedback from users all over the globe were poured into the design. All this hard work has resulted in separator rings with significantly improved performance and ease of use.

**Composi-Tight® 3D Fusion™**

- Get a grip!** All Composi-Tight® 3D Fusion™ separator rings incorporate Ultra-Grip™ retention extensions that anchor them securely to virtually any tooth. These rings stay where you place them!
- Hugs the curve –** Soft-Face™ silicone tips with enhanced marginal ridge anatomy hug the matrix band to the tooth for flash-free restorations.
- It just keeps going –** Enhanced stacking for extended ring life and greater tooth separation.
- Stack it up –** The Stack™ technology allows placement of the orange ring full over the blue ring (and for easier MCO and multiple tooth restorations).

**Wider indications, wider smiles!**

Dentistry's first Wide Preparation separator ring (green) makes Composi-Tight® 3D Fusion™ the most versatile and user-friendly sectional matrix system available. The Wide Prep ring greatly simplifies what until now has been one of the most challenging posterior composite restorations. Now you can restore these big preps with confidence knowing that you will achieve excellent contact and contour without having to take extra steps.

**Matrix band perfection**

Composi-Tight® 3D Fusion™ Full Curve Non-Stick Matrices are three dimensionally contoured, ultra-thin and dead-soft to help you recreate ideal interproximal anatomy.

**Easy in – easy out!** A Grab-Tab™ centered on the outside edge of the band simplifies placement while Stick-Bands™ enable coating to reduce composite adhesion by an impressive 92%!

**Ultra Adaptive Wedges**

Combining Soft-Face™ adaptive materials, a firm inner core and advanced mechanical features to produce a wedge that truly works. Every time.

**Flux with serious function**

Soft material, the specially formulated adhesive wedge material and the wedge back when size of the interproximal space. Wedge back out is a thing of the past.

**Composi-Tight® 3D Fusion™ forceps for precise control**

Engineered for the moment – Whether your hands are big or small, Composi-Tight® 3D Fusion™ forceps give you the leverage you need for precise ring placement.

Composi-Tight® 3D Fusion™ includes dentistry's premier drop-forged ring placement forceps. Regardless of your hand size or strength, Composi-Tight® 3D Fusion™ forceps will give you incredible control for the precise placement of superior separator rings over even the widest molars.

- Go deep or wide –** Improved subgingival extensions and added ergonomic length make for the perfect matrix band to use with the green Wide Preparation ring. Now you're ready to tackle even the widest preps!
- Long-term investment –** Drop-forged stainless steel prevents leverage-risking flexion and makes these forceps incredibly durable.
- Functionality for all –** As an added bonus, Composi-Tight® 3D Fusion™ forceps will work with virtually any ring from any manufacturer.
- A real suffix!** Composi-Tight® 3D Fusion's Soft-Side™ resin mold allows the wedge to adapt to the tooth's irregularities, truly do – actually adapt to – interproximal irregularities.
- Tough on the inside** The firm inner station allows for easy insertion and tooth separation just like a traditional wedge.

**Only Garrison® can bring you a comprehensive introductory kit like this!**

**Composi-Tight® 3D Fusion™ Kit FX-KFF-10**

Contents:

- 10 - Wide Prep Ring (green)
- 1 - Full Ring (orange)
- 1 - Wide Prep Ring (green)
- 10 - Assorted Matrix Bands
- 10 - Assorted Ultra-Adaptive Wedges
- 12 - Assorted Non-Stick Bands
- 1 - Ring Placement Forceps

**Garrison** Dental Solutions

SWAN - Dubai Office  
MAZAYA BUSINESS AVENUE, DUBAI, UAE  
info@swanmedsupply.com  
+971-43-8800018  
+971-4325-87118

**SWAN**

**About SWAN**

Guided by over 6 years of experience in the medical sales and marketing industry in the MENA region, with a main focus on the GCC region, SWAN is the partner of the choice for all partners who aim to provide a novel, high quality and innovative medical solution in the region.

Established in Dubai in 2016, SWAN strives to successfully provide access to an innovative medical solution and improve health and quality of life of patients across the region. Our current main focus is Dentistry. We at SWAN aim to be one of the largest distributors of dental merchandise and technology leaders for dental practices in the GCC region.

**Contact**  
Mazaya Business Avenue  
Dubai | UAE  
Mob: +971 (0) 5 28538713  
E-mail: info@swanmedsupply.com  
Web: www.swanmedsupply.com

## PROMEDICA

Highest quality made in Germany

**Glass ionomer luting cement**

- High level of adhesion
- Highly biocompatible, low acidity
- Continuous fluoride release
- Precision due to micro- fine film thickness
- Translucency for an aesthetic result

**Temporary crown & bridge material**

- Less than 5 min. processing time
- Strong functional load
- Perfect long-term aesthetics
- Excellent biocompatibility

**Self-curing calcium hydroxide paste**

- For indirect pulp capping and linings under dental filling materials
- Sufficient working time in combination with a short setting time in the mouth
- Bacteriostatic
- Antimicrobial effect due to a high pH-value
- Contains 26% calcium hydroxide
- Preservation of vitality due to pulp recovering

**Urbical**

**PROMEDICA**

**Dental Material GmbH**  
24537 Neumünster / Germany  
Tel. +49 43 21 / 5 41 73  
Fax +49 43 21 / 5 19 08  
eMail info@promedica.de  
Internet www.promedica.de

Visit [www.promedica.de](http://www.promedica.de) to see all our products





# Beverly Hills Formula

## Oral Care Experts Beverly Hills Formula Introduce Two New Products to their Perfect White Range

Irish oral care brand Beverly Hills Formula are poised to introduce two new ground-breaking products to their successful portfolio of everyday teeth whitening toothpastes, mouthwashes and whitening kits. The hugely popular brand has been successfully operating since 1992, and since then has built up a mass of loyal customers across the globe, notably from their success with the Perfect White Range, first launched in 2012.

Beverly Hills Formula noticed a gap in the market for everyday oral care products that provide both expert care, as well as helping to whiten teeth and remove stains. Before now, it seemed that teeth whitening was unattainable, expensive and quite damaging to teeth. They have been highly successful bringing these highly innovative products to market, thus driving sales across the globe.

Following on from the success of their Perfect White Range, BHF are now adding two more products to their range:

Joining the family of Perfect White will be Perfect White Gold Mouthwash, due to hit shelves this summer. The glittering mouthwash has a luxurious look, with visible floating golden sparkles designed to stand out from the crowd. The mouthwash, is very effective when used after brushing with Perfect White Gold toothpaste and is designed to help maintain healthy teeth and gums. Sodium Fluoride ensures anti-cavity protection whilst the mouthwash leaves a refreshing feel in the mouth with a subtle minty taste.

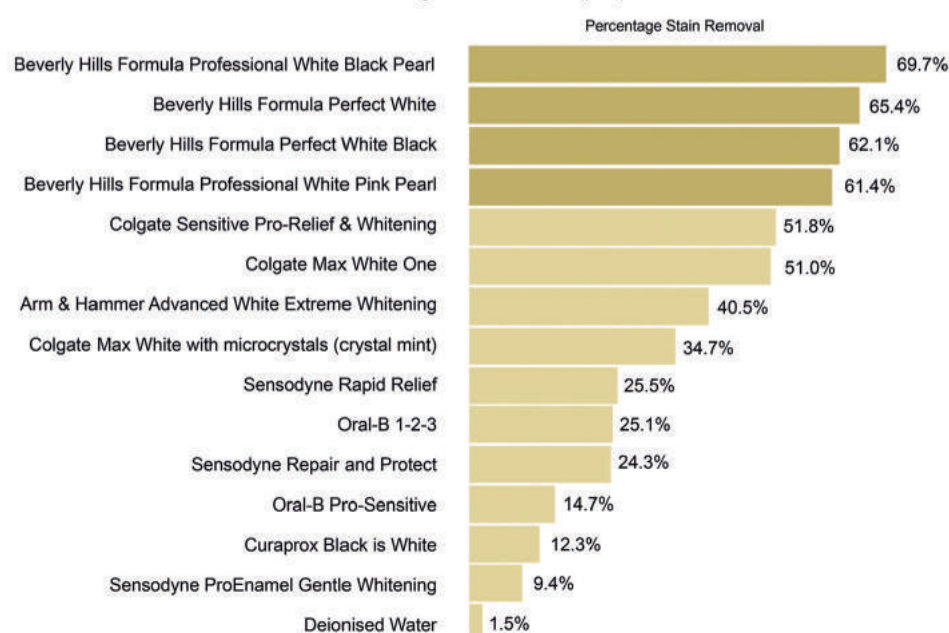
Also set to be released this summer is Perfect White Optic Blue. The brand predict sales of this product to soar and it is set to be one of their most successful toothpastes to date. This is mainly due to immediate visible results made possible by Blue Filter Technology. Scientifically formulated, Blue Filter Technology forms a special layer over teeth during brushing to reflect light, which in turn creates an instant optical whitening effect on teeth. This produces an immediate visible whitening effect after each use, which gradually fades away over time. Responding successfully to today's very image conscious society which looks for instant results, there is no doubt that this product will cause a stir within the industry and the brand looks forward to its success.

Beverly Hills Formula are continuing to expand and evolve rapidly, ensuring they are always at the forefront of expert teeth whitening and oral care.

### MOUTHWASH PERFECT WHITE GOLD

### TOOTHPASTE PERFECT WHITE OPTIC BLUE

Toothpaste Stain Removal  
Leading Dental School (UK)



Toothpaste Abrasivity Certificate of Analysis

